

# RP150

## Modeling Guitar Processor

The RP Legacy Continues. We invented guitar multi-effects. We've satisfied more than a million RP owners. Now we've RE-defined the product category with the most powerful guitar processors ever — a totally new generation of modeling technology with awesome effects and amp models so rich they should carry a cholesterol warning.

RP WITH AudioDNA<sup>2</sup>



### RP150

- AudioDNA<sup>2</sup> DSP super-chip
- 30-preset Quick Start Tone Library
- 30-preset Quick Start Effects Chain Library
- 72 total models
- 48 Effects models – up to 11 at a time
  - 9 Mild-to-wild classic distortion stompbox models including TS-808\*, DOD® 250, ProCo Rat™\*, Big Muff® Pi\* etc.
  - Genuine Lexicon® reverbs
  - 3 Wahs
  - 2 rotary models
- 17 Amp/Acoustic models with A/B switching
  - Vintage models of '57 Deluxe®\*, '65 Twin\*, Vox® AC30\*, Marshall® Super Lead\* etc.
  - Modern rectifiers and boutique amps
- 12 cabinet models based on vintage Fender®\*, Marshall®\* and Vox®\*
- 50 Factory / 50 User presets
- 2 x 2 streaming USB I/O
- 1/4" Stereo Outputs
- 1/8" Stereo Headphone Out
- 1/4" Control In
- 1/4" Instrument In
- 24 bit – 44.1kHz A/D/A
- High quality drum machine with 60 patterns
- Power supply included

### AudioDNA<sup>2</sup>. The power inside the pedal.

**400% more horse-power.** No wonder the RP150 sounds so good. You're looking at the world's most advanced audio processor, the "engine" that gives our new RP models so much more raw impact and subtle detail.



new generation of effects and models.

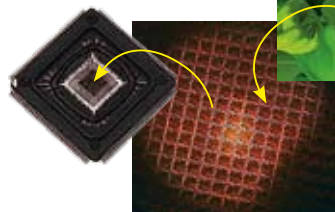
The design team worked for over two years, literally re-defining audio signal processing

at the chip level. Then our "Tone Guru" engineers — fresh from Production Modeling™ triumphs like the Jimi Hendrix Experience™ Artist Series pedal — set to work taking advantage of all this new raw processing power.

When you hear what AudioDNA<sup>2</sup> does for the tone of the RP150 you'll agree it was all worth it.

Other manufacturers use general-purpose, off-the-shelf chips. But creating the best guitar tone requires a 100% specialized, optimized processor.

Being total audio processing fanatics, our "Chip Wizard" engineers set out to create a super-processor specifically designed to power a whole



### USB connectivity for recording, preset editing/archiving/downloading and more.

The RP150 is ready to talk to your PC or Mac® computer: it has a built-in 24-bit 2-in/2-out USB interface. Lay down tracks with your favorite multitrack DAW software. Play back a mix or MP3 cut directly through your RP150 and jam along

with it. Download a free copy of X-Edit™ Editor/Librarian from [www.digitech.com](http://www.digitech.com) and customize presets, upload and download new tones, including those from magazine web sites and our own thriving online player community.



**DigiTech**  
The Power to Create

# RP150

Up to 48 total models...and a unique new way to blend them together fast.

## Stompbox Distortion Models

- based on Ibanez® \*TS-9 Tube Screamer™
- based on DOD® 250 Overdrive/Preamp
- based on ProCo Rat™\*
- based on Boss® \*DS-1 Distortion
- based on DigiTech® Grunge®
- based on Boss® \*MT-2 Metal Zone®
- based on DOD® Gonkulator™ Ring Mod
- based on Arbiter Fuzz Face\*
- based on EH® Big Muff® Pi\*

## Volume / Wah Models

- based on DigiTech® Full Range
- based on Dunlop® Cry Baby Wah®\*
- based on Vox® Clyde McCoy Wah™\*

## Compressor / Limiter Models

- based on DigiTech® Compressor
- based on Boss® \*CS-2 Compressor/Sustainer

## Equalization

- 3 band EQ

## Noise Gate / Auto Swell

- based on DigiTech® Noise Gate
- based on DigiTech® Auto Swell

## Chorus Models

- based on Boss® \*CE-2 Chorus
- based on DigiTech® Dual Chorus
- based on DigiTech® Multi Chorus®

## Flanger Models

- based on DigiTech® Flanger
- based on MXR® \*Flanger

## Phaser Models

- based on DigiTech® Phaser

## Pitch Models

- based on DigiTech Whammy™
- based on DigiTech® Pitch Shift
- based on DigiTech® Detune
- based on DigiTech® IPS

## Vibrato / Rotary Models

- based on DigiTech® Vibrato
- based on DigiTech® Rotary

## Tremolo Models

- based on DigiTech® Tremolo
- based on DigiTech® Panner

## Envelope / Special Models

- based on DigiTech® Envelope Filter
- based on DigiTech® Auto Ya™
- based on DigiTech® Step Filter

## Delay Models

- based on DigiTech® Analog Delay
- based on DigiTech® Digital Delay
- based on DigiTech® Modulated Delay
- based on DigiTech® Pong Delay
- based on DigiTech® Tape Delay

## Reverb Models

- based on Fender® \*Twin Reverb™
- based on Lexicon® Ambience
- based on Lexicon® Studio
- based on Lexicon® Room
- based on Lexicon® Hall
- based on EMT® 240 Plate

## Amp Models

- based on '57 Fender® \*Tweed Deluxe®
- based on '59 Fender® \*Tweed Bassman®
- based on '65 Fender® \*Blackface Twin Reverb™
- based on '68 Marshall® \*100 Watt Super Lead™ (plexi)
- based on '77 Marshall® \*Master Volume™
- based on '83 Marshall® \*JCM800
- based on '81 Mesa/Boogie® \*Mark II C
- based on '01 Mesa/Boogie® \*Dual Rectifier™
- based on '63 Vox® \*AC30 Top Boost
- based on '69 Hiwatt® \*Custom 100 DR103
- based on '96 Matchless® HC30
- based on '57 Fender® \*Tweed Champ
- based on DigiTech® Solo
- based on DigiTech® Metal
- based on DigiTech® Bright Clean
- based on DigiTech® Clean Tube

## Acoustic Models

- based on Dreadnaught Acoustic

## Cabinet Models

- based on 2x12 - '65 Fender® \*Blackface Twin Reverb™
- based on 4X10 - '59 Fender® \*Tweed Bassman®
- based on 1x12 - '57 Fender® \*Tweed Deluxe Reverb®
- based on 2x12 - '63 Vox® \*AC30 Top Boost w/Jensen® Blue Backs
- based on 4x12 - Marshall® \*1969 Straight w/Celestion® \*G12-T70
- based on 1x8 - '57 Fender® \*Tweed Champ™

## Pickup Models

- Single Coil › Humbucker

©2006, All Rights Reserved, Harman International Industries Inc. \* P/N XXXXXX \* All specifications subject to change. DigiTech, X-Edit, Production Modeling, Grunge, DOD, DigiTech Whammy, Synth Talk, Lexicon and AudioDNA are trademarks of Harman International Industries Inc. The Jimi Hendrix Experience is a trademark of Experience Hendrix, LLC, www.jimihendrix.com \*Other product names modeled in this product are trademarks of their respective companies that do not endorse and are not associated or affiliated with DigiTech or Harman International Industries, Inc. ProCo Rat, MXR, Boss Metal Zone, EH Big Muff Pi, Dunlop Cry Baby, Vox, Clyde McCoy Wah, TC Electronic, Fender Opto Tremolo, Fender Twin Reverb, EMT, Fender Tweed Deluxe, Fender Bassman, Twin Reverb, Marshall Super Lead™, Mesa/Boogie, Hiwatt, Fender Tweed Champ, Jensen Blue Backs and Celestion are trademarks or trade names of other manufacturers and were used merely to identify products whose sounds were reviewed in the creation of this product.



Does packing fifty-five gallons of superbly-detailed new models into a one-liter processor mean the RP150 is complicated to use? Nope. Once you've played with our new **Tone and Effects Library** knobs, you may never go any farther into the infinitely-tweakable RP interface. New RP **Tone and Effects Libraries** let you access pre-designed combinations of models as fast as you can turn the knob. From mellow and bluesy to scorch-the-face-of-the-earth-raw, you're gonna find combinations that fit your playing style.



Take your new RP to a weekend jam and drop some jaws. The RP150 is dripping with tone that has to be heard to be believed. Tone that deserves to be heard on stage and in the studio. But even if your new RP guitar modeling processor never leaves your practice room, you'll never run out of creative ways to use it.

Sandy UT USA • www.digitech.com



A Harman International Company