



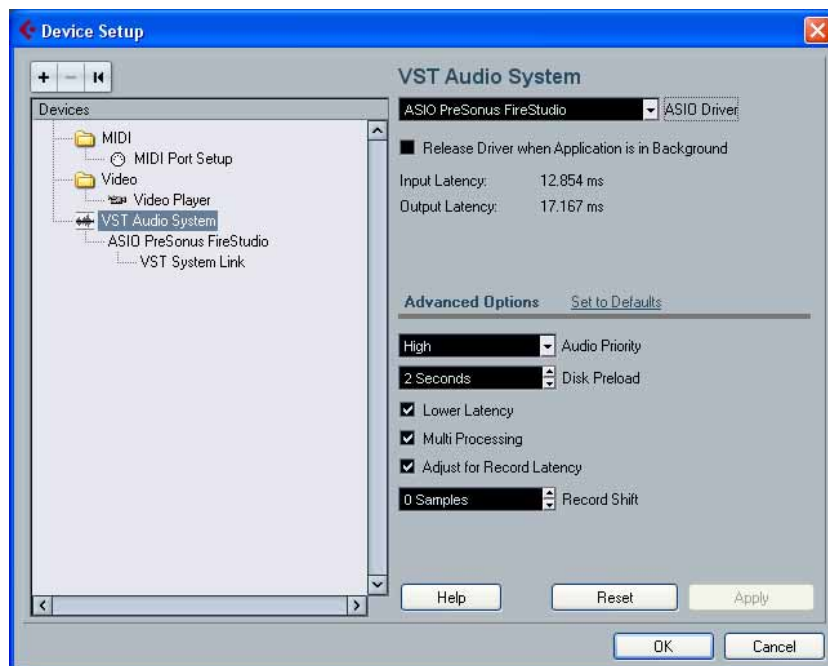
Setting Up Your PreSonus Device in **Cubase LE4**

When you receive your PreSonus interface and open Cubase LE4 for the first time, you'll need to set up all of your input and output busses.

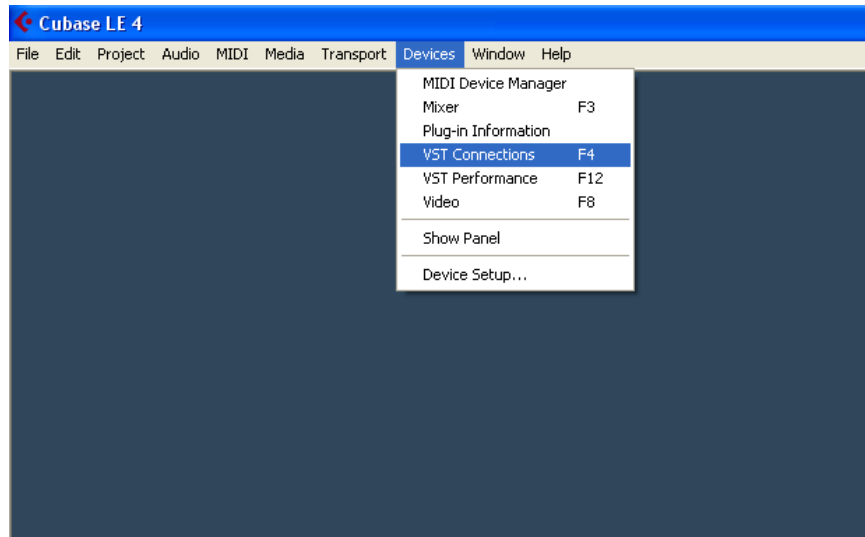
1. Open Cubase, and go to the "Devices/Device Setup" window. Click on "VST Audio System" and select your PreSonus interface.



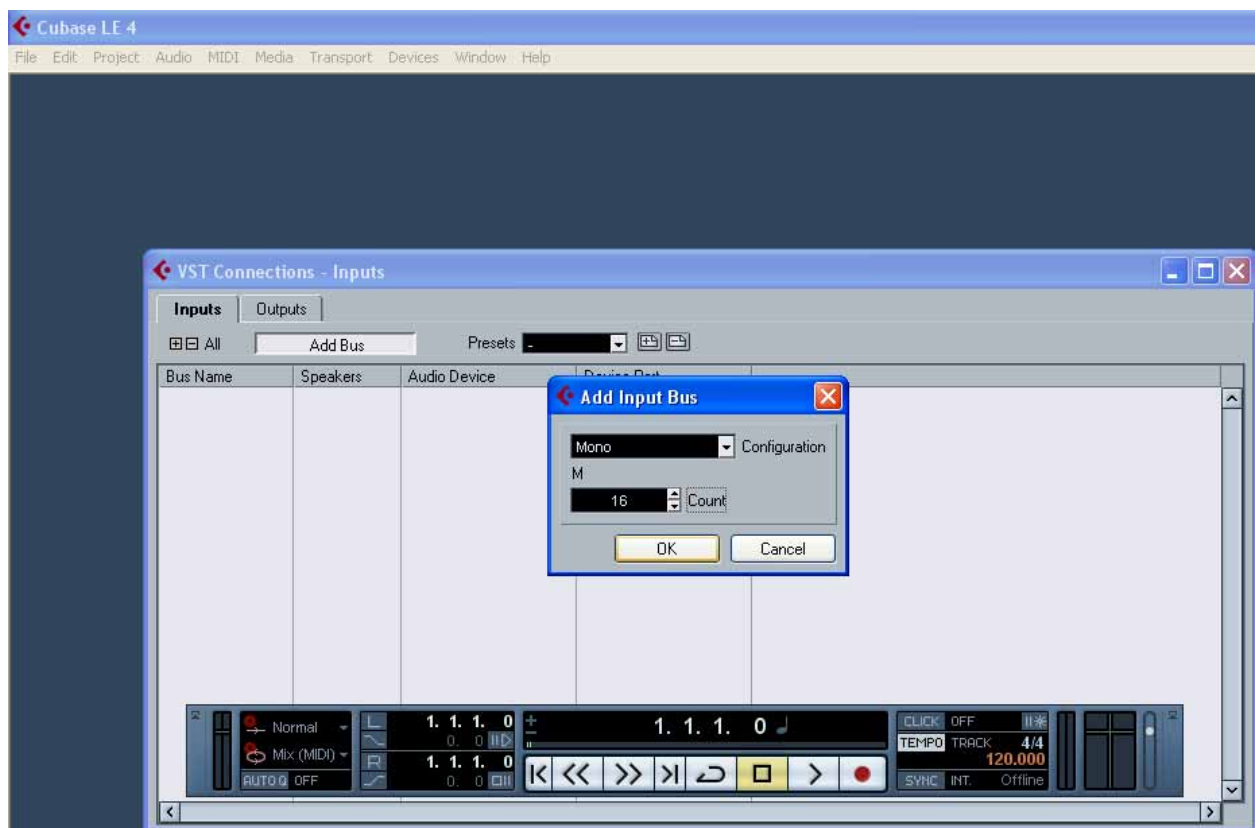
2. In "Device Setup", click on "VST Audio System" and select your PreSonus interface as your ASIO driver. When asked if you want to "keep" or "switch" the audio driver, select "switch" and then press "OK", to close.



3. Go back to “Devices” and then to “VST Connections”

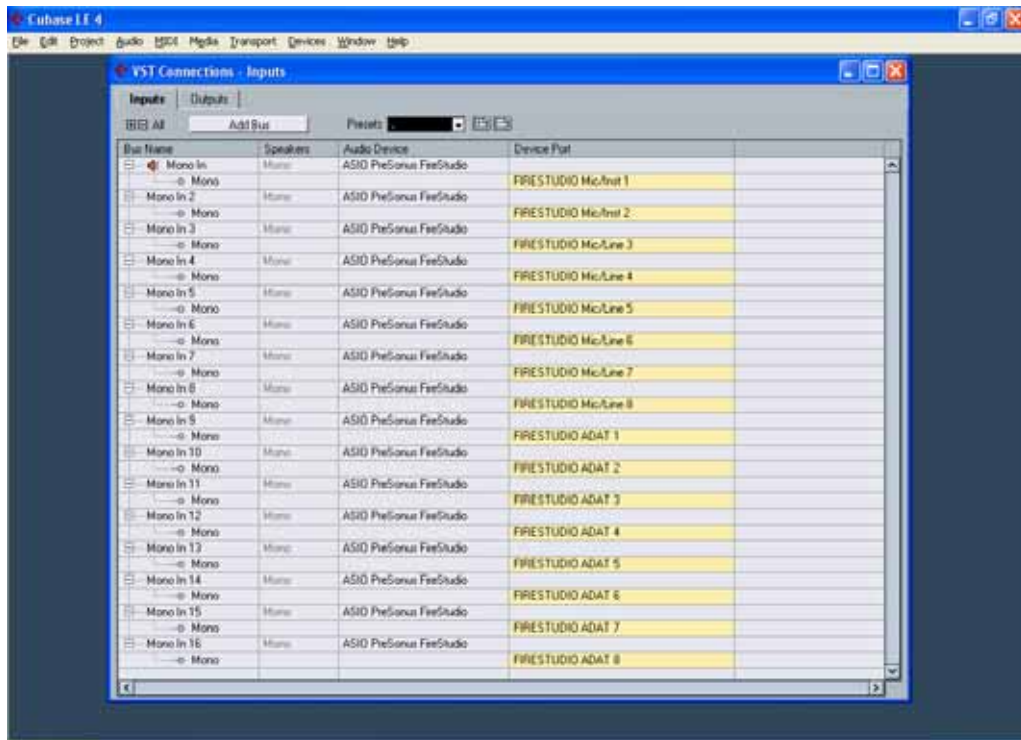


4. In the “Inputs” tab, delete any existing busses. Then add a Mono Bus for every channel, in this case, 16 mono busses.

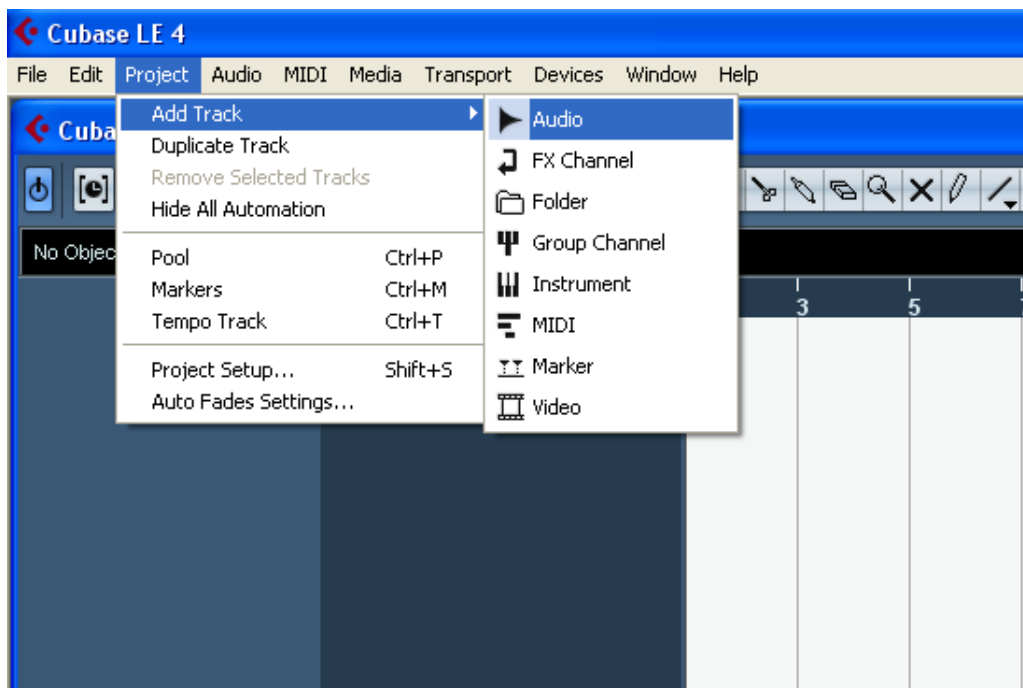




5. Make sure that the “Device Port” column has your inputs number 1-16, top to bottom

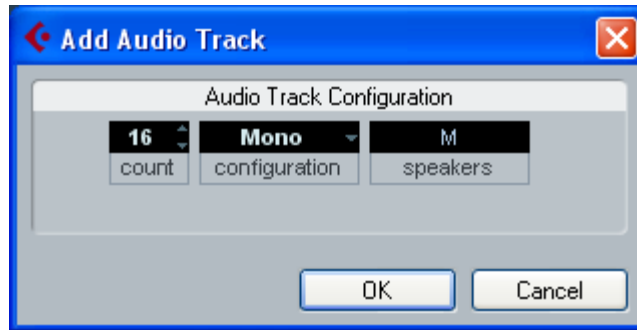


6. Once that's done. Go to “File/New Project” to create a new project. After that, click “Project/Add Track/Audio” to create your audio tracks

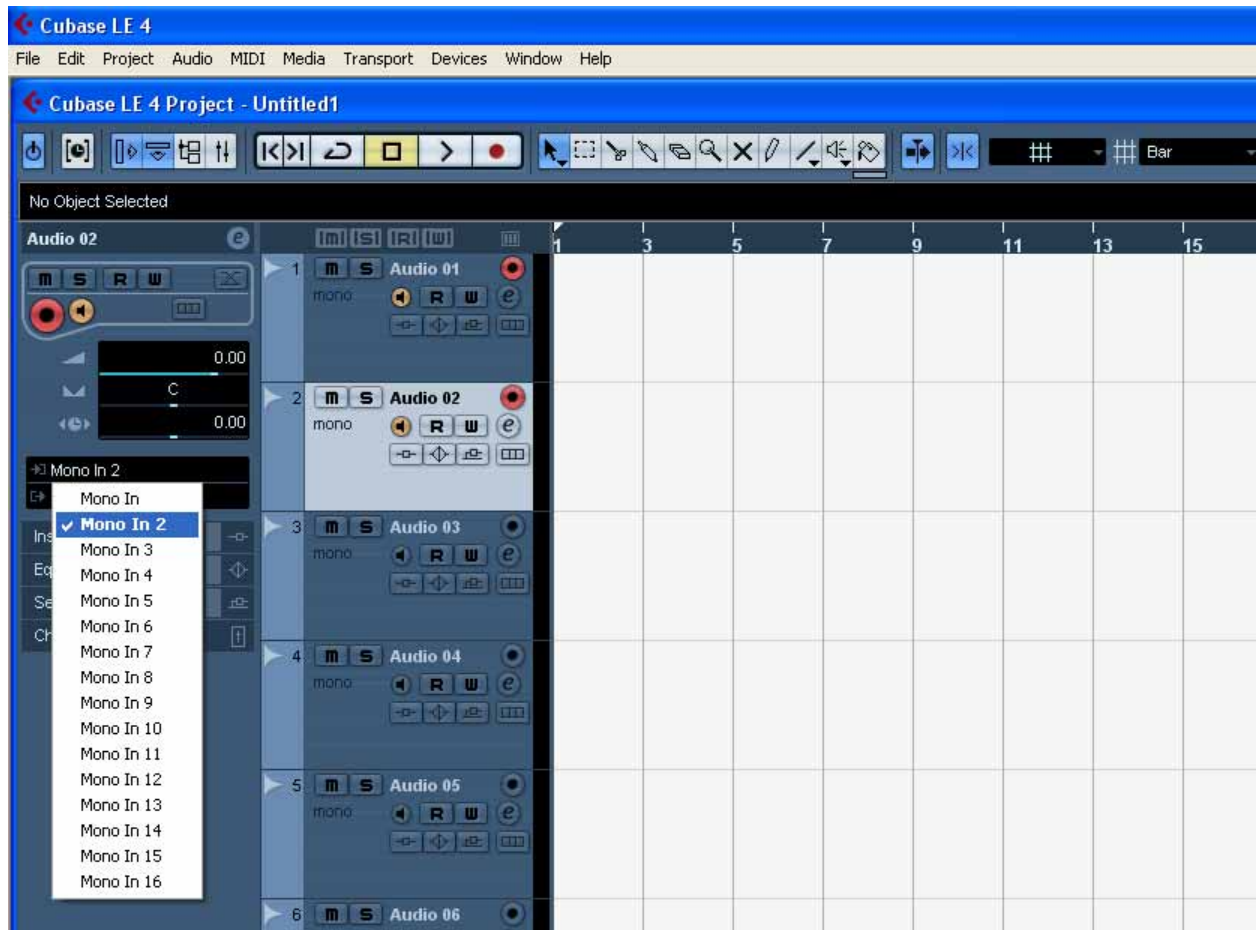




7. Create a mono channel for every mono bus that you created in “VST Connections”



8. From there, select each channel's input and output bus. Here, we're selecting “Mono In 2” for channel 2.



9. Make sure that the “Record Enable” and “Monitor” buttons are engaged.

If you have any other questions, contact PreSonus Tech Support at 1-800-750-0323 or at techsupport@presonus.com