

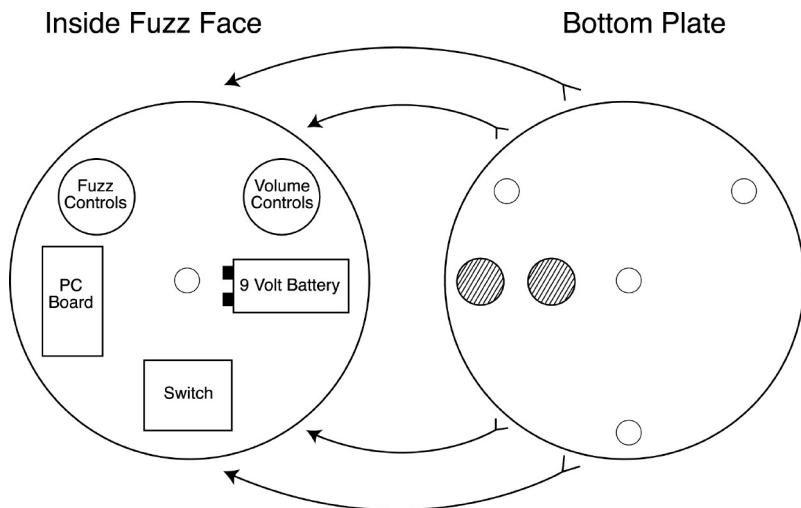
# Fuzz Face

## Putting in Battery:

1. Remove bottom plate by turning the center screw counterclockwise.
2. Attach battery clip to a 9 volt battery.
3. Place battery in Fuzz Face as in the diagram below.
4. Line up bottom plate so that rubber pads make contact with battery. This keeps battery in place.
5. Holding Fuzz Face with bottom plate snug in place, feed the screw through hole and turn clockwise until tight.
6. Remove 1/4" plug from input jack when not in use to prevent battery from draining.

## Using the Fuzz Face:

1. Connect guitar to Fuzz Face input. Connect Fuzz Face output to amplifier input.
2. Step on the switch.
3. Turn up the volume for desired effect.



92500864050