



mLAN Graphic Patchbay Owner's Manual

Table of Contents

Introduction to mLAN Graphic Patchbay	
Graphic View	2
List View	3
Using mLAN Graphic Patchbay as a Plug-In	4
Operational Flow.....	5
Starting mLAN Graphic Patchbay.....	6
Menu Bar.....	7
Tool Bar	11
About Nodes	13
Grayed-out Node	14
Relocating a Node	15
Swapping a Grayed-Out Node	16
Viewing Node Information	18
Connector Information Window	23
mLAN Connection Settings.....	24
Wordclock Settings	24
Connecting Node Inputs and Outputs	26
Disconnecting the Cable	29
Saving and Opening an mLAN Graphic Patchbay File	31
Viewing the mLAN Connection	
Settings in List View	32
Connecting Connectors in List View ..	34
Disconnecting Connectors	35
Keyboard Shortcuts.....	36
Error Messages.....	37
Using S200-compatible IEEE 1394 devices	38
Troubleshooting.....	39

Precautions

- The mLAN Graphic Patchbay software and this owner's manual are the exclusive copyrights of Yamaha Corporation.
- Duplication of the software or reproduction of this manual in whole or in part by any means is expressly forbidden without the written consent of the manufacturer.
- Duplication of commercially-available music sequence data and/or digital audio files is strictly prohibited, except for personal use.
- Yamaha makes no representations or warranties with regard to the use of the software or documentation and is not responsible for damages that result from the use of this manual or the software.
- The mLAN Graphic Patchbay software may be updated without notice.
You can download the latest version of the software from the following URL:
<http://www.yamahasynt.com/down/index.htm>
- Screen displays in this owner's manual are intended for instructional purposes only and may appear different than screens displayed on your computer.
- Explanations of operations in this manual are primarily based on screens that are displayed on Windows computer systems. However, the explanations also apply to Macintosh computers.
- Company and product names in this owner's manual are the trademarks or registered trademarks of their respective companies.

This owner's manual assumes that you are already familiar with basic Windows or Macintosh operations. If you are not, please refer to the owner's manual that came with your Windows or Mac OS software before using mLAN Graphic Patchbay.

For information on hardware requirements, device interconnections and the installation of the mLAN Graphic Patchbay software, refer to the separate "Installation Guide" as well as to the owner's manual for the respective MIDI device.

Introduction to mLAN Graphic Patchbay

mLAN Graphic Patchbay software enables you to set up and manage connections between mLAN devices using a graphic computer interface to connect and disconnect virtual audio/MIDI connectors and to synchronize audio/MIDI signals between mLAN devices.

In this manual, setting up audio, MIDI, and wordclock routings is referred to as making “mLAN connections.”

You can immediately grasp the connections in their entirety by viewing displayed mLAN system configuration graphics. You can also intuitively change audio and MIDI signal routing and wordclock settings, much as if you were connecting physical cables.

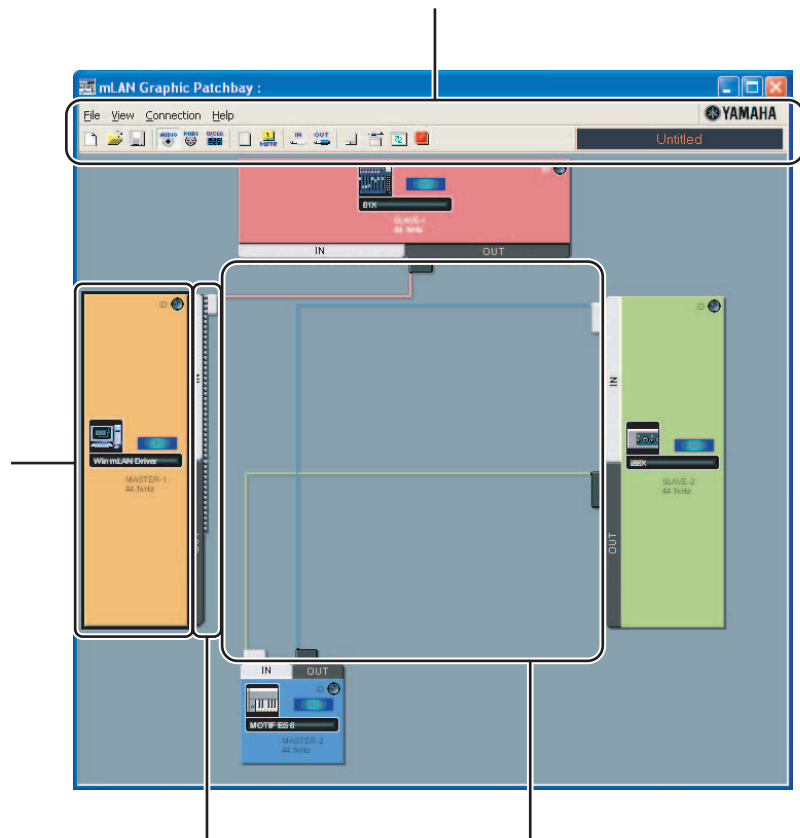
Graphic View

Menu and Tool bars

These bars enable you to use various functions by selecting menu options or clicking Tool bar buttons. (pages 7 and 11)

Node

Computers and mLAN devices in an mLAN network are called “nodes.” These graphics provide information about connected nodes (page 13).



Input and output connectors

These connectors represent virtual audio/MIDI/wordclock inputs and outputs for each node. You can route audio/MIDI/wordclock signals on an mLAN network by using the graphic user interface to connect these connectors (page 24).

Cable

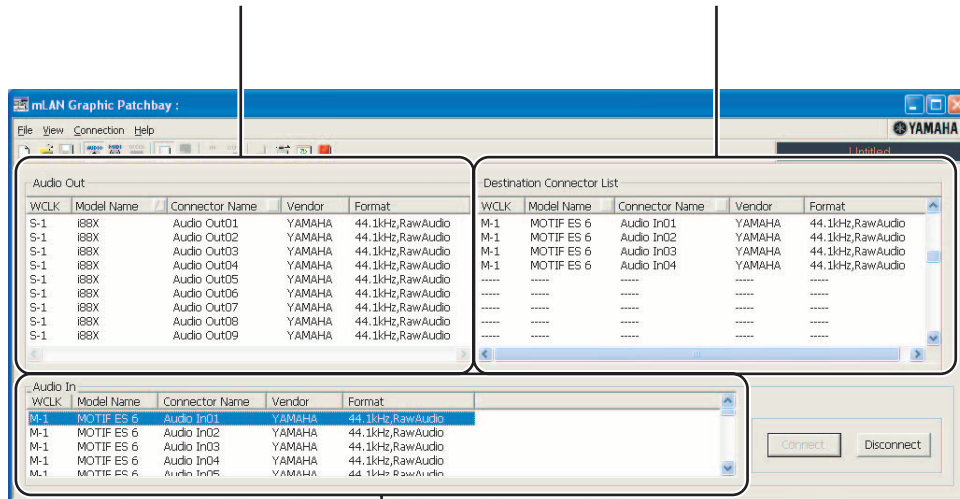
This virtual cable indicates connected nodes in an mLAN network.

You can also view a list that shows the status of connections in an mLAN network. The list indicates the status of audio and MIDI connections and enables you to modify these connections. For more information, see page 32.

List View

Audio Out and MIDI Out sections
Provide information on audio and MIDI output connectors on all nodes in an mLAN network.

Destination Connector List
Indicates connections between connectors in the Audio Out and MIDI Out sections and input connectors.



Audio In and MIDI In sections
Provide information on audio and MIDI input connectors on all nodes in an mLAN network.

Using mLAN Graphic Patchbay as a Plug-In

You can start mLAN Graphic Patchbay as either stand-alone software or as a plug-in for an Open Plug-in Technology compatible application.

Open Plug-in Technology (OPT) is a new software format that enables you to control MIDI devices from a music software sequencer. For example, OPT enables you to start and operate various parts of your music system, such as Plug-in Board editors and mixing control editors, directly from an OPT-compatible sequencer. OPT also makes it unnecessary to set MIDI drivers for each application, streamlining your music production system and making all operations more convenient and seamless.

■ About OPT Levels

The client application and its compatibility with OPT can be divided into three levels, as shown below.



Level 1 (OPT Panels) provides basic support for opening and displaying OPT control panels that can transmit data via a clients' external MIDI connectors. Typically, this enables basic hardware editor control panels to operate properly.



Level 2 (OPT Processors) provides support for real-time MIDI processors and panel automation. Typically, this enables both real-time and offline MIDI effects (e.g., arpeggiators, transposers, etc.) to operate properly and supply automation to OPT panels.



Level 3 (OPT Views) provides support for edit views and MIDI processors and panels that require direct access to client sequencer storage structures. Typically, this enables support of sophisticated MIDI edit views (e.g., list editors, auto accompaniment, data checkers, etc.).

■ OPT Level Implementation for mLAN Graphic Patchbay

This chart shows OPT-compatibility of mLAN Graphic Patchbay.

OPT levels of client application		mLAN Graphic Patchbay operation	
		Operation support	Operation limits
Views (Level 3)		Yes	None
Processors (Level 2)		Yes	None
Panels (Level 1)		Yes	None

All mLAN Graphic Patchbay functions work under the client applications of any OPT level (Panels (Level 1), Processors (Level 2), and Views (Level 3)).

NOTE Certain operations may not work as expected if there is no corresponding function in the client application (sequencer, etc.). The highest level of implementation for the client application is indicated in the OPT logo (which appears along with the version information in the application).

Operational Flow

1. Connect the computer and mLAN devices using the IEEE1394 cables.
2. Start mLAN Graphic Patchbay (page 6).
3. Set up wordclock on the mLAN network (page 24).
4. Configure the routing of audio and MIDI signals on the mLAN network (page 24).
5. Specify the audio and MIDI inputs and outputs as per the owner's manual for your DAW (Digital Audio Workstation), audio sequencer, and/or connected devices.

For subsequent steps, refer to the owner's manual for the software and connected devices.

■ Page reference

- To change the sampling frequency (Sample Rate).....See page 19.
- To set the number of audio channels for mLAN transmission
.....See page 19 and 21.
- To change the nickname for the mLAN devices (nodes) or connectorsSee page 20.
- To set the mLAN Driver Setup parametersSee page 20.
- To change the latency See the section regarding connecting the computer and mLAN devices in the Installation Guide.
- If the computer and mLAN devices are unable to communicateSee page 39.

■ If multiple IEEE1394 interface cards have been installed on the computer:

mLAN Graphic Patchbay cannot simultaneously operate mLAN devices connected to multiple IEEE1394 interface cards.

• Windows

Before you start mLAN Graphic Patchbay, select in the mLAN Driver Setup window the IEEE1394 interface card you wish to use (page 20).

• Macintosh

Connect an mLAN device to a single IEEE1394 interface card.

If multiple IEEE1394 cards have been installed in the computer, a computer node for each card will be displayed in the Graphic Patchbay screen. However, you can make an mLAN connection (page 24) only for the node representing the card that is connected to an mLAN device.


To find out which IEEE1394 card (connected to an mLAN device) corresponds to which node, check the [Vendor] name displayed in [1394 Adapter Card ID] in "mLAN Driver Setup." (page 20)

NOTE If you cannot make an mLAN connection for some reason, make sure that the IEEE1394 card (connected to the mLAN device) has been selected in the OMS Setup and ASIO mLAN Control Panel windows. (Refer to "Changing the Settings after Installation" and "OMS Setup" in the Installation Guide.)

Starting mLAN Graphic Patchbay

After you successfully install mLAN Graphic Patchbay, follow the steps below to start the application.

• For Windows Users

1. Right click the YAMAHA mLAN Manager icon () in the Task bar to display a pop-up menu, then select [ON] in the menu.



2. Select [Graphic Patchbay] in the same menu.

NOTE If the YAMAHA mLAN Manager icon does not appear in the Task bar, click the [Start] button, then select [Programs | mLAN Tools | mLAN Manager]. The Task bar now indicates the YAMAHA mLAN Manager icon.

Refer to the owner's manual for the client application for details on starting the mLAN Graphic Patchbay when using it as a plug-in (page 4).

• For Macintosh Users

Open the "mLAN Tools" folder, then click the "mLANGraphicPatchbay" icon.
mLAN Graphic Patchbay will start.

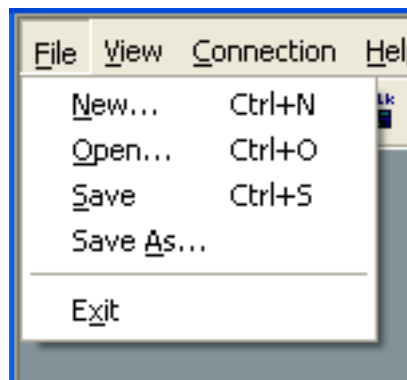
Menu Bar

The Menu bar contains various editing and setup function commands. Click the desired menu name to display the appropriate pull-down menu, then choose the command you wish to apply. Unavailable commands are grayed-out.

File Menu

This menu enables you to store the current mLAN Graphic Patchbay settings in a file and retrieve the stored settings. For more information on files, refer to page 31.

NOTE Macintosh files do not include an extension.



■ New

Creates a new default mLAN connection configuration and updates the graphic information. Select this option to configure a new mLAN network.

■ Open

Opens an existing mLAN Graphic Patchbay (*.ymp) file and retrieves the stored mLAN connection settings.

■ Save

Saves the current settings by overwriting the current mLAN Graphic Patchbay file (*.ymp).

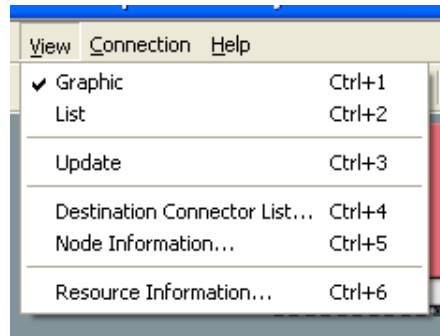
■ Save As

Saves the current mLAN connection settings in a new file under a new name. You can also save an existing file as a new file under a new name.

■ Exit

Closes mLAN Graphic Patchbay. This option is unavailable if you are using mLAN Graphic Patchbay as a plug-in for the host application.

View Menu



■ Graphic

Displays the current mLAN connection settings graphically (page 2).

■ List

Displays the current mLAN connection settings in a list (page 3).

■ Update

Updates the information regarding mLAN devices (nodes) that are connected in the mLAN network.

■ Destination Connector List

Displays the connection status of virtual audio and MIDI inputs and outputs.

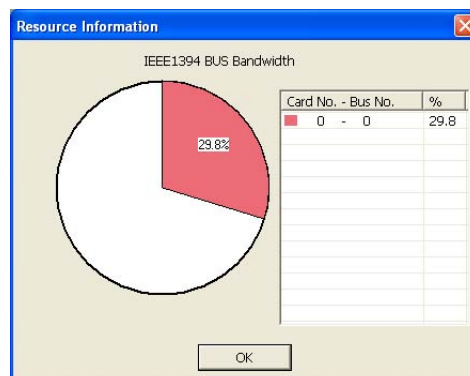
■ Node Information (available only in Graphic view)

Provides information on a selected node (marked by a solid black frame) and enables you to change various node settings (page 18).

■ Resource Information

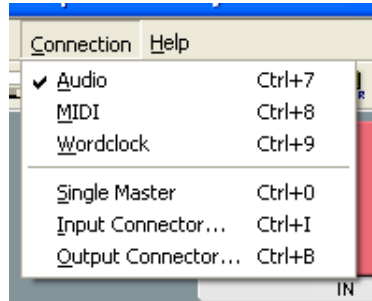
Provides information on current IEEE1394 BUS bandwidth using a pie chart and a list. View this information to ensure that there is sufficient bandwidth for additional audio connections.

NOTE An error due to lack of bandwidth may occur even after you disconnect some mLAN routings. Always update the resource information before checking the available bandwidth.



Connection Menu

The Connection menu enables you to connect virtual audio, MIDI and wordclock inputs and outputs for each node, route audio and MIDI signals; and synchronize mLAN devices in an mLAN network (page 24).



■ Audio

Displays the Audio Connection window, which enables you to connect audio inputs and outputs between nodes.

■ MIDI

Displays the MIDI Connection window, which enables you to connect MIDI inputs and outputs between nodes.

■ Wordclock (available only in Graphic view)

Displays the Wordclock Settings window, which enables you to connect wordclock inputs and outputs between nodes.

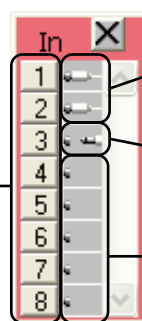
■ Single Master (available only in Graphic view)

Specifies the selected node (a node marked by a solid black frame) as the wordclock master, and the other nodes as slaves. Wordclock connections between nodes will be made automatically (page 24). Typically, you will use this function to specify the wordclock master in an mLAN network.

■ Input Connector/Output Connector (available only in Graphic view)

Displays the Input Connectors window or Output Connectors window for the selected node (a node marked by a solid black frame).

Click one of these connector numbers for each node to open the corresponding connector information window. If a node represents a computer, each connector number corresponds to an audio channel or MIDI connector number (that is, the number of the mLAN driver).

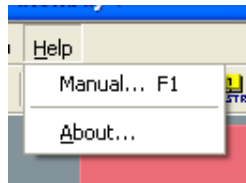


This input (or output) connector is connected to an output (or input) connector of another node.

This input (or output) connector is currently selected.

These input (or output) connectors are not connected.

Help Menu



■ Manual

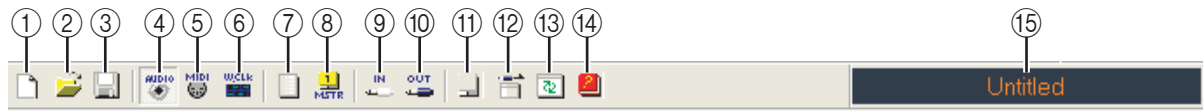
Displays this PDF manual.

■ About

Displays mLAN Graphic Patchbay version information.

Tool Bar

Clicking icons on the Tool bar enables you to use the same functions and commands that you can access from the Menu bar. Icons for unavailable functions are grayed-out.



① New

Creates a new default mLAN connection configuration and updates the graphic information. Select this option to configure a new mLAN network.

You can also access this function by selecting [File], then [New] in the Menu bar.

② Open

Opens an existing mLAN Graphic Patchbay (*.ymp) file and retrieves the stored mLAN connection settings (page 31).

You can also access this function by selecting [File], then [Open] in the Menu bar.

③ Save

Saves the current settings by overwriting the current mLAN Graphic Patchbay file (*.ymp) (page 31).

You can also access this function by selecting [File], then [Save As] in the Menu bar.

④ Audio

Displays the Audio Connection window, which enables you to connect audio inputs and outputs between nodes (page 24).

You can also access this function by selecting [Connection], then [Audio] in the Menu bar.

⑤ MIDI

Displays the MIDI Connection window, which enables you to connect MIDI inputs and outputs between nodes (page 24).

You can also access this function by selecting [Connection], then [MIDI] in the Menu bar.

⑥ Wordclock (available only in Graphic view)

Displays the Wordclock Settings window, which enables you to connect wordclock inputs and outputs between nodes (page 24).

You can also access this function by selecting [Connection], then [Wordclock] in the Menu bar.

⑦ Change View

Switch the view of the current mLAN connection settings between Graphic view and List view.

⑧ Single Master (available only in Graphic view)

Specifies the selected node (a node marked by a solid black frame) as the wordclock master, and the other nodes as slaves. Wordclock connections between nodes will be made automatically (page 24). Typically, you will use this function to specify the wordclock master in an mLAN network.

You can also access this function by selecting [Connection], then [Single Master] in the Menu bar.

⑨ **In (available only in Graphic view)**

Displays the Input Connectors window of the selected node (a node marked by a solid black frame). You can also access this function by selecting [Connection], then [Input Connector] in the Menu bar.

⑩ **Out (available only in Graphic view)**

Displays the Output Connectors window of the selected node (a node marked by a solid black frame).

You can also access this function by selecting [Connection], then [Output Connector] in the Menu bar.

⑪ **Node Information (available only in Graphic view)**

Provides information regarding a selected node (marked by a solid black frame) and enables you to change various node settings (page 18).

You can also access this function by selecting [View], then [Node Information] in the Menu bar.

⑫ **Destination Connector List**

Displays the connection status of virtual audio and MIDI inputs and outputs.

You can also access this function by selecting [View], then [Destination Connector List] in the Menu bar.

⑬ **Update**

Updates the information regarding mLAN devices (nodes) that are connected in the mLAN network.

You can also access this function by selecting [View], then [Update] in the Menu bar.

⑭ **Manual**

Displays this PDF manual. You can also access this function by selecting [Help], then [Manual] in the Menu bar.

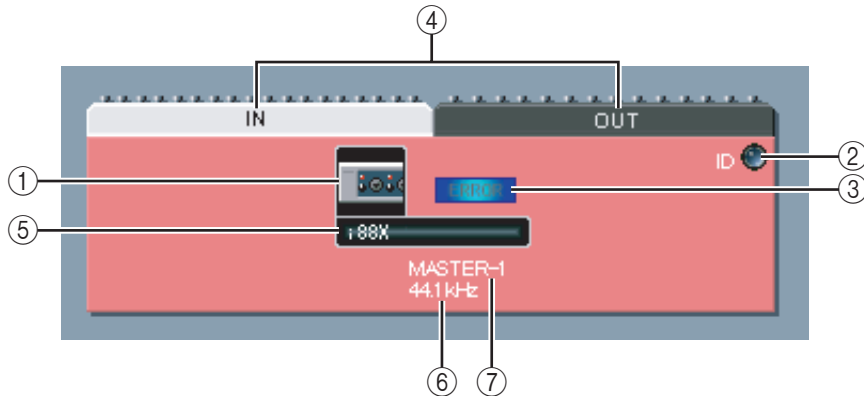
⑮ **File name**

This area indicates the name of the currently-opened file (*.ymp). Click the name to display the Open dialog box, which you can also access by selecting [File | Open] from the Menu bar.

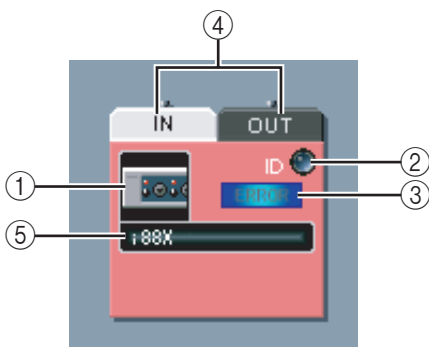
About Nodes

Computers and mLAN devices that are connected in an mLAN network are called “nodes.” mLAN Graphic Patchbay displays node information in the graphics, including the number of node inputs and outputs, node names, and the current operating sampling frequency.

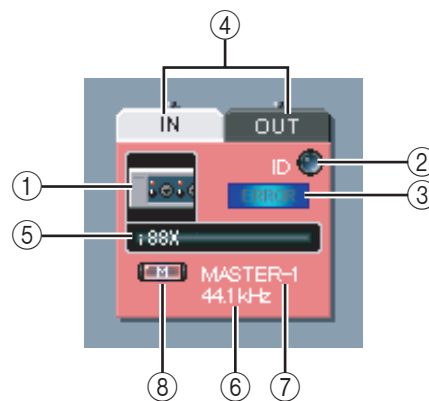
Audio node (Audio Setup window)



MIDI node (MIDI Setup window)



Wordclock node (Wordclock Setup window)



① Node icon

Click a node icon to display and, if desired, change settings for the corresponding node (page 18). Clicking the icon in the audio and wordclock setup windows displays the Node Information (Audio) window. Clicking the icon in the MIDI setup window displays the Node Information (MIDI) window. You can also access this function via the [Node Information] option in the Menu and Tool bars.


② ID button


Click this button to flash the ACTIVE indicator on the corresponding mLAN device. This function is useful in mLAN networks that include multiple mLAN devices because it enables you to identify correspondences between nodes in the Graphic Patchbay screen and mLAN devices in the network.

NOTE Some mLAN devices do not feature an ACTIVE indicator. Refer to the owner's manuals for your mLAN devices.

③ Error indicator

Indicates whether the signal is being transmitted or received correctly.

 : Signal is being transmitted or received correctly.

 : An error has occurred. Click the indicator to display details about the error.

④ IN/OUT connectors

These connectors represent audio, MIDI and wordclock inputs and outputs in the Audio, MIDI and Wordclock Connection windows. To change connections, click a connector to display the corresponding Input or Output window (page 9). The window indicates the node connectors and magnified connectors to which virtual cable connectors are connected.

⑤ Node nickname

You can assign nicknames to nodes (page 18). If a nickname is not assigned, the product model name (page 18) appears.

⑥ Sample rate

Displays the current operating sampling (wordclock) frequency (44.1 kHz, 48 kHz, 88.2 kHz, or 96 kHz).

⑦ Master/Slave number

Displays the wordclock master or slave number.

⑧ M(aster) button

The button indicator lights up when the node is operating as master. The button indicator turns off when the node is operating as a slave. To switch the node from slave to master, click this button to turn on the indicator (page 26).

Grayed-out Node

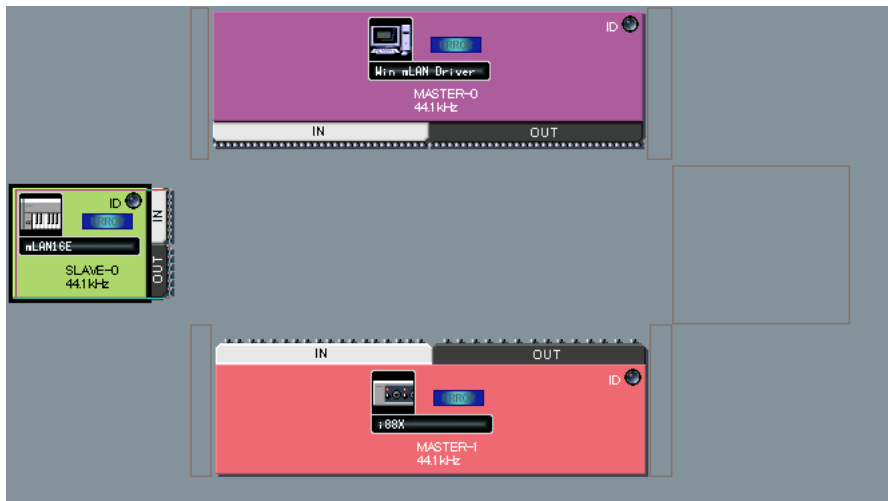
If mLAN Graphic Patchbay fails to detect a node that had been recognized before you updated the information, the node will be grayed-out and unavailable for settings adjustments. In this case, right-click the grayed-out node (on a Macintosh, click the node while holding down the <Ctrl> key) to display the [Delete] pop-up menu. Click the [Delete] button to delete the node.



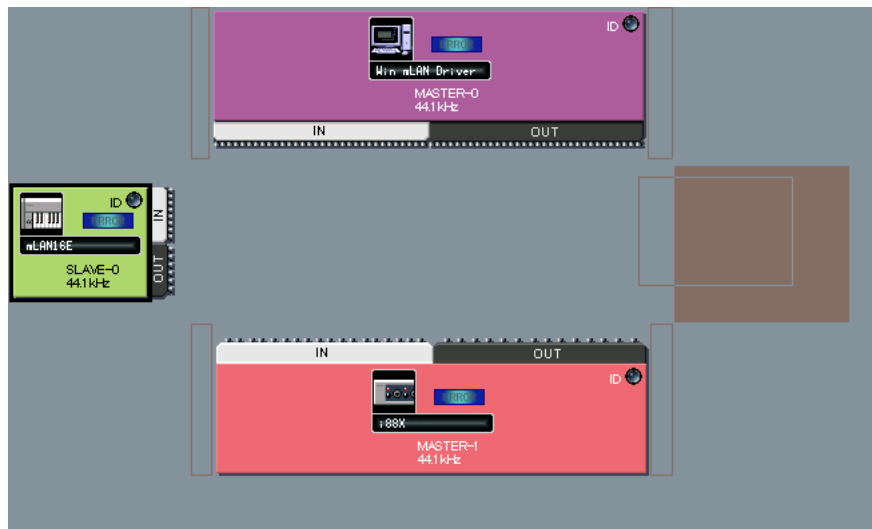
Relocating a Node

You can drag-and-drop to relocate a node.

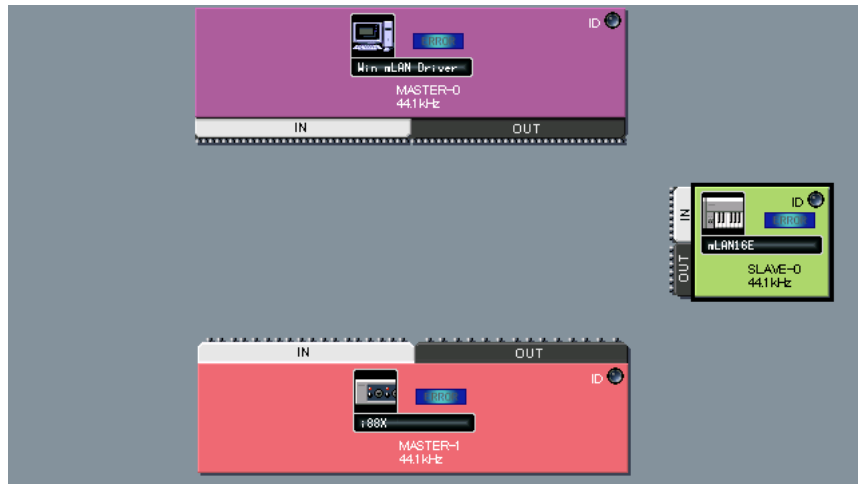
1. Move the pointer to a node you wish to relocate, then press and hold down the mouse button.
2. While you are holding down the mouse button, mLAN Graphic Patchbay displays brown boxes to which you can relocate the selected node.



3. While continuing to hold down the mouse button, drag the node to a brown box. The destination box will be highlighted.



4. Release the mouse button. The node is relocated.



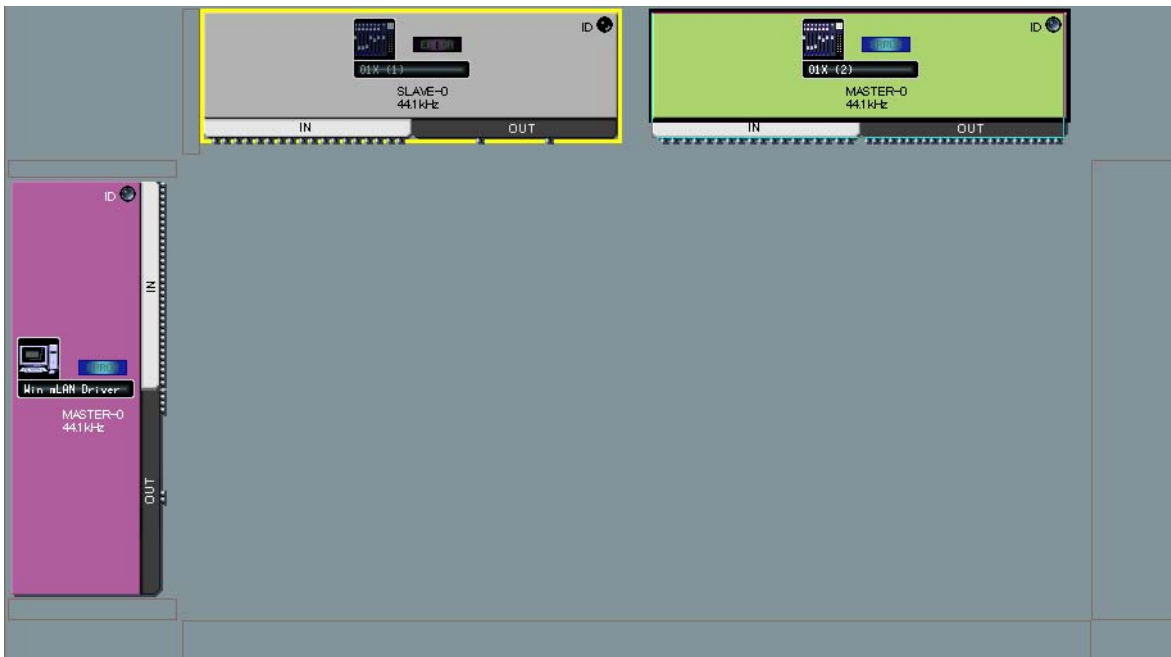
Swapping a Grayed-Out Node

If mLAN Graphic Patchbay displays both a grayed-out node (page 14) and a new node of the same model that has not yet been connected to any node, you can swap nodes. After you swap nodes, the connection settings for the grayed-out node will be applied to the new node. The grayed-out node will be deleted. This saves you from patching nodes from scratch when you change an mLAN device or use a different mLAN device of the same model in a new location.

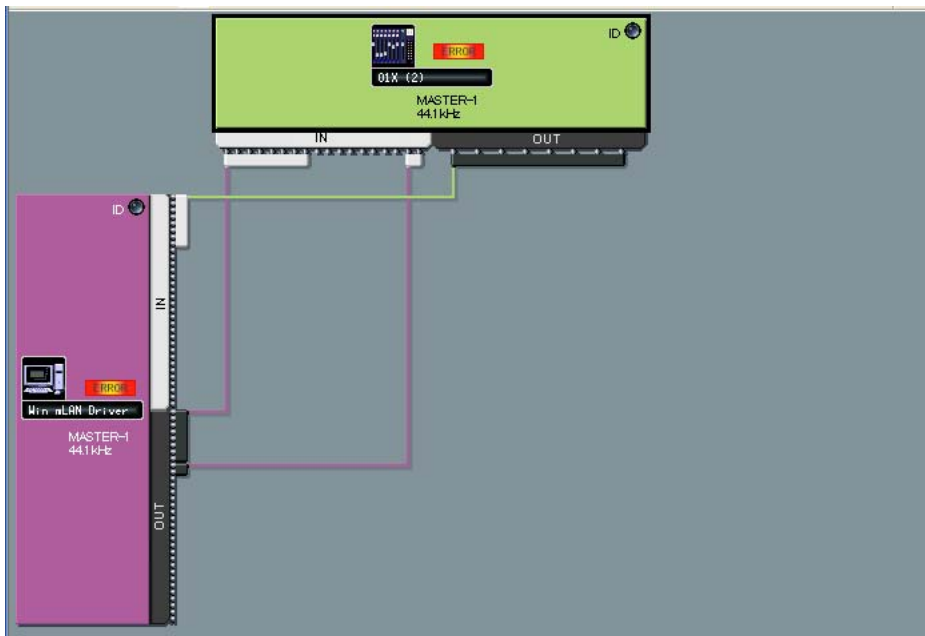
- NOTE**
- You can swap a grayed-out node and a new node only if both nodes are for the same model.
 - To swap the nodes, no input or output connectors of the new node should be connected.

1. Move the pointer to the new node, then press and hold down the mouse button.

2. While you are holding down the mouse button, a swappable grayed-out node is indicated with a yellow frame.



3. While holding down the mouse button, drag the new node to the swappable grayed-out node, then release the mouse button.
4. The grayed-out node will be replaced by the new node.



Viewing Node Information

In Graphic view, you can display and change detailed node information by clicking the node icons (page 13) for the computer and mLAN devices, or selecting a node and then selecting [Node Information] from the [View] menu. The Node Information (Audio) window opens from the Audio or Wordclock Connection windows, and the Node Information (MIDI) window opens from the MIDI Connection window.

Node Information (Audio) window

Supported Sample Rate (kHz)				
Master	44.1	48	88.2	96
Slave	44.1	48	88.2	96

■ Vendor

Indicates the manufacturer of the node device.

■ Model Name

Indicates the model of the node device.

■ Model Nickname

Indicates and enables you to change the node nickname. You can assign any nickname (up to 32 characters) to help identify the node. You cannot use two-byte characters (such as Japanese or Chinese characters).

■ GUID

Indicates a unique ID for mLAN device nodes. If two nodes are mLAN devices of the same model, the IDs are different for each device.

If the node represents a computer, this field indicates the ID for the IEEE1394 card.

■ Version

If the node represents a computer, the field indicates the mLAN driver version.

If the node represents an mLAN device, the field indicates the device firmware version.

■ Supported Sample Rate (kHz)

Indicates sampling (wordclock) frequencies supported by the node. Sampling frequencies that are not supported by the node are grayed-out.

■ Maximum Number of Connected Node

Indicates the maximum number of nodes that can be connected to the audio inputs of a node.

■ Connector Name

Enables you to select an audio input or output connector. The ID and nickname of the selected connector will be displayed in the [Connector ID] and [Connector Nickname] fields.

NOTE If a node represents a computer, the number at the end of the audio or MIDI connector name will match the number of an audio channel or MIDI connector specified on the DAW (that is, the number of the mLAN driver).

■ Sample Rate

If the computer is operating as wordclock master, you can change the sampling frequency here.

This field also indicates (but does not allow you to change) the sampling frequency of a computer operating as wordclock slave, or the sampling frequency of other mLAN devices.

NOTE To change the sampling frequency of an mLAN device operating as wordclock master, do so on the device.

NOTE If the error message “Cannot change” is displayed, refer to “If you cannot change the sampling frequency or the number of output channels” on page 22.

NOTE Some mLAN devices support certain sampling frequencies only when the devices synchronize with incoming signals. For more information, refer to the owner’s manual for your mLAN device.

■ Number of Channels

Displays the maximum number of audio input channels, and displays and enables you to set the maximum number of audio output channels.

NOTE If a node represents a computer, the number of audio input connectors is fixed to 32 CH.

NOTE If the error message “Cannot change” is displayed, refer to “If you cannot change the sampling frequency or the number of output channels” on page 22.

■ WDM CH (for Windows only)

Specifies whether the WDM driver is used for the audio output from the computer. Audio channels that use the WDM driver are assigned to 31st and 32nd Out Connectors of the node.

NOTE Before using the WDM driver, make sure you have set the Sounds and Audio Devices Properties window correctly. (See the section on troubleshooting the computer system sound output from mLAN audio channels in the Installation Guide).

■ **Icon**

Enables you to change the node icon (page 13).

■ **Bkgrnd Color**

Enables you to change the background color of the nodes.

■ **OK**

Confirms the settings and closes the window.

■ **Cancel**

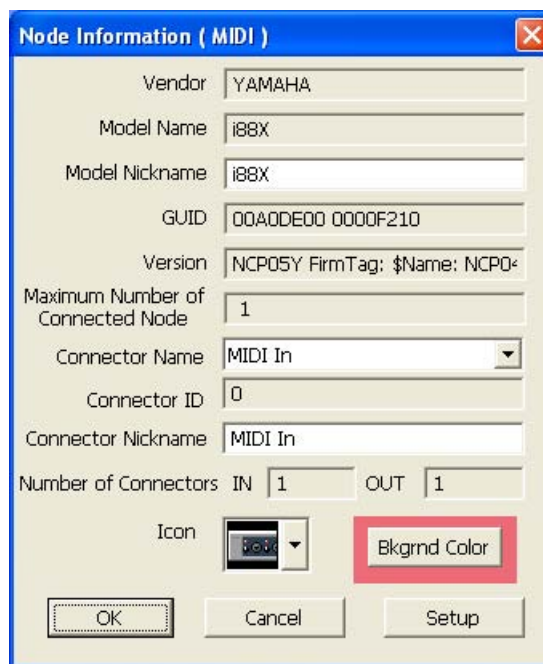
Cancels the settings and closes the window.

■ **Setup**

If the node represents a computer, clicking the [Setup] button displays the mLAN Driver Setup window (refer to “Changing settings after installation” in the Installation Guide).

If the node represents an mLAN device, clicking the [Setup] button displays the mLAN Control Panel window (refer to “Connecting a Computer to an mLAN Device via mLAN” in the installation Guide).

Node Information (MIDI) window



■ **Vendor**

Indicates the manufacturer of the node device.

■ **Model Name**

Indicates the model of the node device.

■ **Model Nickname**

Indicates and enables you to change the node nickname. You cannot use two-byte characters (such as Japanese or Chinese characters).

■ GUID

Indicates a unique ID for mLAN device nodes. If two nodes are mLAN devices of the same model, the IDs are different for each device.

If the node represents a computer, this field indicates the ID for the IEEE1394 card.

■ Version

If the node represents a computer, the field indicates the mLAN driver version.

If the node represents an mLAN device, the field indicates the device firmware version.

■ Maximum Number of Connected Node

Indicates the maximum number of nodes that can be connected to the MIDI inputs of a node.

■ Connector Name

Enables you to select a MIDI input/output connector. The ID and nickname of the selected connector will be displayed in the [Connector ID] and [Connector Nickname] field.

NOTE If a node represents a computer, the number at the end of the audio or MIDI connector name will match the number of an audio channel or MIDI connector specified on the DAW (that is, the number of the mLAN driver).

■ Number of Connectors

Displays the maximum number of MIDI input and output connectors available to the node.

■ Icon

Enables you to change the node icon (page 13).

■ Bkgrnd Color

Enables you to change the background color of the nodes.

■ OK

Confirms the settings and closes the window.

■ Cancel

Cancels the settings and closes the window.

■ Setup

If the node represents a computer, clicking the [Setup] button displays the mLAN Driver Setup window (see the Installation Guide).

If the node represents an mLAN device, clicking the [Setup] button displays the mLAN Control Panel window (see the Installation Guide).

■ **If you cannot change the sampling frequency or the number of output channels:**

To change the computer's sampling frequency or the number of output channels, you must first shut down the DAW that is using the mLAN driver.

1. Shut down the DAW or audio sequencer.
2. If you were using mLAN Graphic Patchbay as a plug-in for the host application, re-start mLAN Graphic Patchbay as a stand-alone application (page 6).
3. In the Node Information window, edit the sampling frequency and/or the number of output channels as necessary (page 18).
4. Restart the DAW or audio sequencer.

Connector Information Window

The image shows two screenshots of software windows. The top window is titled 'Audio In' and contains the following fields: Vendor (YAMAHA), Model Nickname (i88X), Connector Nickname (Audio In05), and Source Name (mLAN16E : Audio Out01). The bottom window is titled 'MIDI In' and contains the following fields: Vendor (YAMAHA), Model Nickname (i88X), Connector Nickname (MIDI In), and Source Name (mLAN16E : MIDI Out01). Both windows have 'OK' and 'Cancel' buttons at the bottom.

In Graphic view, clicking the connector number in the Input or Output window (page 9) displays the Input or Output Information window, in which you can view and change detailed information, including the connector nickname and connecting destination. The connector Information (Audio) window opens from the Audio or Wordclock Connection windows. The connector Information (MIDI) window opens from the MIDI Connection window.

■ Vendor

Indicates the manufacturer of the node device.

■ Model Nickname

Indicates the model of the node device.

■ Connector Nickname

Indicates and enables you to change the connector nickname. You cannot use two-byte characters (such as Japanese or Chinese characters).

If no nickname is assigned, this field indicates the connector name.

■ Source Name (Displayed only in the Input Information window)

Displays the nickname of the destination node and output connector.

■ OK

Confirms the settings and closes the window.

■ Cancel

Cancels the settings and closes the window.

mLAN Connection Settings

This section describes how to connect or disconnect audio or MIDI connectors between nodes, and change wordclock and other mLAN connection settings.

You can easily change the audio, MIDI or wordclock signal routing in an mLAN network by intuitively re-patching the cables in the graphic user interface.

Wordclock Settings

There are two ways to set the wordclock:

- Follow the steps described in “Connecting the node inputs and outputs” (page 26) to connect the wordclock connectors one by one
- Use the [Single Master] option

This section explains how to use the [Single Master] option.

You can easily set up the wordclock by using the [Single Master] option. You do not need to connect the wordclock connectors one by one. Typically, you will use this option to specify the wordclock master in an mLAN network.

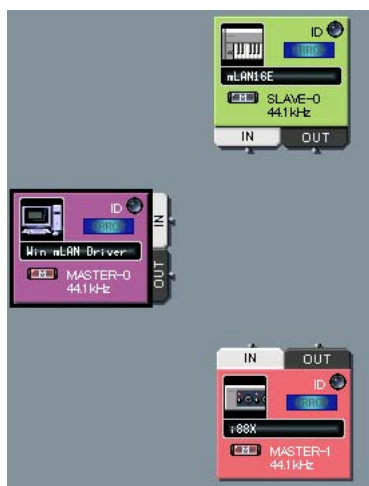
- NOTE**
- If you wish to specify two wordclock masters in an mLAN network and connect the wordclock connectors manually, follow the steps described in the “Connecting the node inputs and outputs” section (page 26).
 - Most functions selected from the Menu bar can also be accessed from the Tool bar.

1. In the [Connection] menu, select [Wordclock].

The Wordclock Setup window opens.

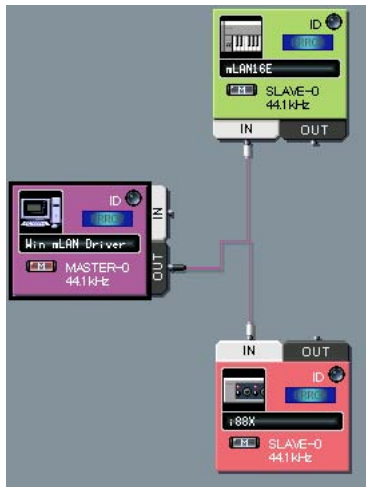
2. Move the mouse to select the node you wish to assign as wordclock master.

The selected node is highlighted by a solid black frame.



3. In the [Connection] menu, select [Single Master].

- The wordclock connector for each node is connected automatically.
The selected node is assigned as wordclock master, and other nodes as slave.



- Click the node icon (page 13) for the wordclock master node. (Alternatively, in the [View] menu, select [Node Information].)

The Node Information (Audio) window opens.

- Select the sampling frequency in the [Sample Rate] field in the Node Information (Audio) window.

The sampling frequency specified here will be automatically used by the slave nodes.

NOTE If the error message “Cannot change” is displayed, refer to “If you cannot change the sampling frequency or the number of output channels” on page 22.

Connecting Node Inputs and Outputs

You can control the audio, MIDI or wordclock signal routings in an mLAN network by connecting the node inputs and outputs.

You can connect the node inputs and outputs by either (a) patching the cables one by one, or (b) simultaneously patching multiple cables as a group.

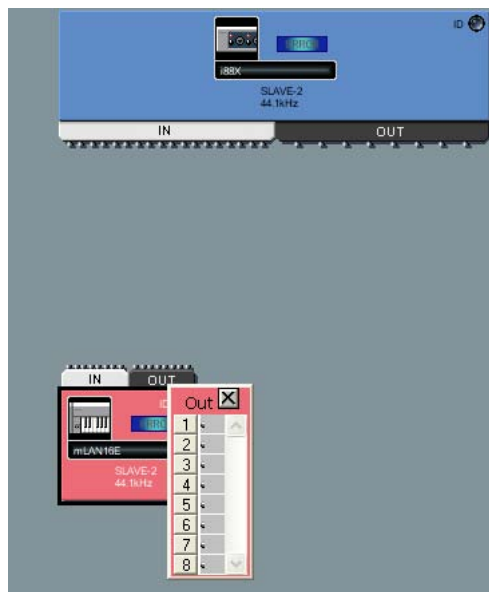
- NOTE**
- You cannot connect the MIDI or wordclock connectors as a group.
 - For wordclock connections, using the [Single Master] option is easier (page 24).
 - If the network includes multiple S200-compatible devices that feature a transfer rate of 200 Mbps, you can connect only one device via MIDI.


■ Patching the cables one by one

- NOTE** The following procedure applies to the Audio Connection window. However, you can also follow this procedure to connect the MIDI and wordclock connectors.

1. Click the [OUT] connector of the node that outputs the signal.

mLAN Graphic Patchbay displays the Output Connector window, which shows enlarged node connectors and virtual cable connectors.



- NOTE**
- To connect the wordclock input and output connectors, first turn on the  button (page 13) of the master node before clicking the [OUT] connector. Otherwise, the Output Connector window will not open.
 - If you connect the wordclock input and output connectors, the node with the output connector is set as master, and the nodes with input connectors are set as slaves. Slave nodes will use the sampling frequency setting of the master node.

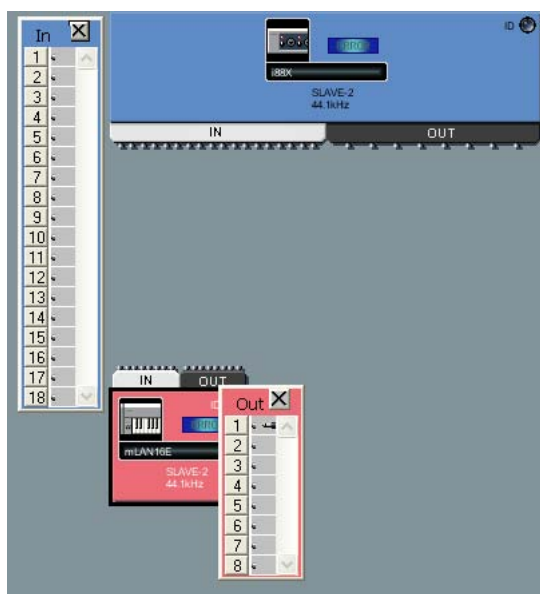
2. In the Output Connectors window, click the box next to the output connector number to be connected.

A virtual cable connector appears in the box.



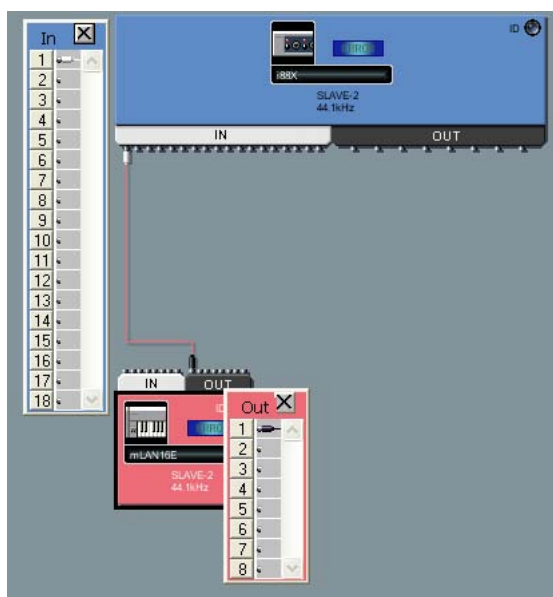
3. Click the [IN] connector of the node that receives the input signal.

mLAN Graphic Patchbay displays the Input Connectors window.



4. In the Input Connectors window, click the box next to the input connector to be connected.

The input and output connectors are now connected by a cable of the same color as the output node.

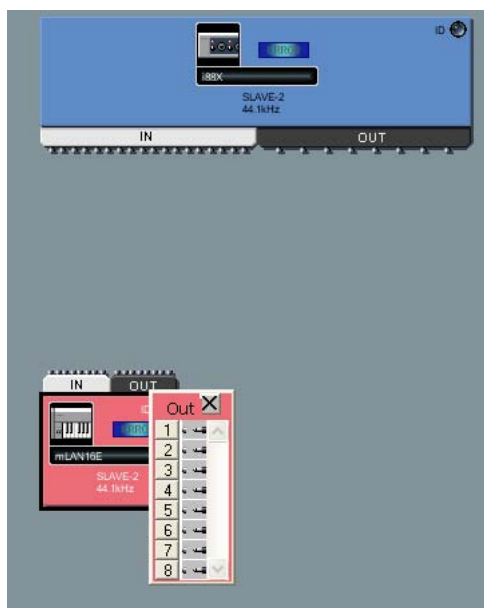


■ Connecting multiple cables simultaneously as a group

NOTE You must select consecutive connector numbers for group connection.

1. Click the [OUT] connector of the node that outputs the signal.
mLAN Graphic Patchbay displays the Output Connectors window.
2. In the Output Connectors window, click the box next to the number of the first output connector to be connected.
3. While pressing and holding down the <Shift> key on the computer keyboard, click the box next to the number of the last output connector to be connected.

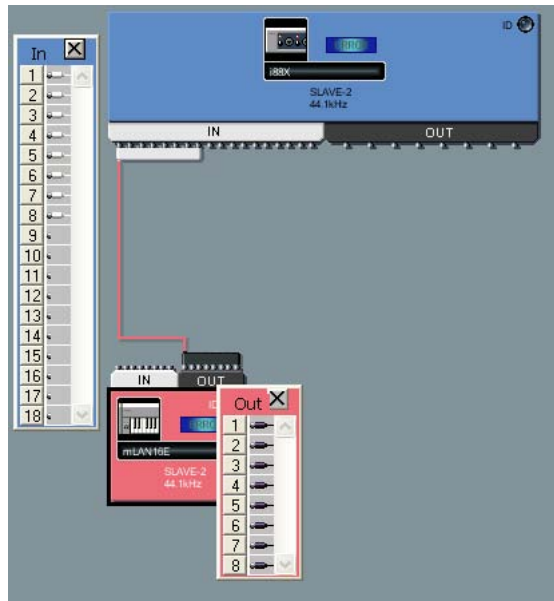
A virtual cable connector appears in each of the output connector boxes in the range specified in Steps 2 and 3.



4. Click the [IN] connector of the node that receives the input signal.
mLAN Graphic Patchbay displays the Input Connectors window.
5. Click the box next to the number of the first input connector targeted for group connection.
6. A virtual cable connector appears in each of the input connector boxes, starting with the input connector selected in this step. The specified multiple input and output connectors are connected by a virtual cable of the same color as the output node.

NOTE

- For group connection, be sure to specify the output connectors first.
- Only a single cable appears in a group connection, or when you connect consecutive input and output connectors.



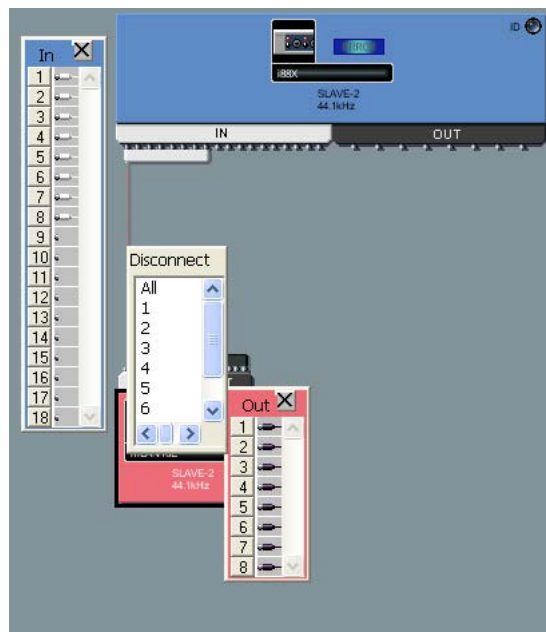
Disconnecting the Cable

To disconnect the cable, you can either (a) delete it from the pop-up menu, or (b) use the <Delete> key on the computer keyboard.

■ Deleting the cable from the pop-up menu

1. Right-click the cable you wish to disconnect (on a Macintosh, click the cable while holding down the <Ctrl> key).

The selected cable is now represented by a dotted line, and a pop-up menu appears. The numbers in the pop-up menu indicate the connector numbers to which virtual cables are connected.



2. In the pop-up menu, click the number of the connector you wish to disconnect.
The cable connecting to the connector will be disconnected. Selecting [All] will disconnect all connectors indicated in the pop-up menu.

■ Using the <Delete> key on the computer keyboard

1. Click the cable you wish to disconnect.
The selected cable is now represented by a dotted line.
2. Press the <Delete> key on the computer keyboard.
mLAN Graphic Patchbay displays a confirmation message.
3. Click [Yes].
4. The selected cable is disconnected.

NOTE If multiple connector connection is represented by a single cable (such as group connection), this procedure will disconnect all connector connections.

Saving and Opening an mLAN Graphic Patchbay File

You can store mLAN connection settings in an mLAN Graphic Patchbay file (extension: *.ymp), then open the file later.

■ File (*.ymp)

An mLAN Graphic Patchbay file enables you to store and retrieve all mLAN Graphic Patchbay settings. If your mLAN devices are fixed, as for example in a home recording environment, store the settings in a file. Since the file stores an ID number for each device, you cannot use the stored mLAN connection settings if you replace a unit, even with another unit of the same model.

NOTE Macintosh files do not include an extension.

Viewing the mLAN Connection Settings in List View

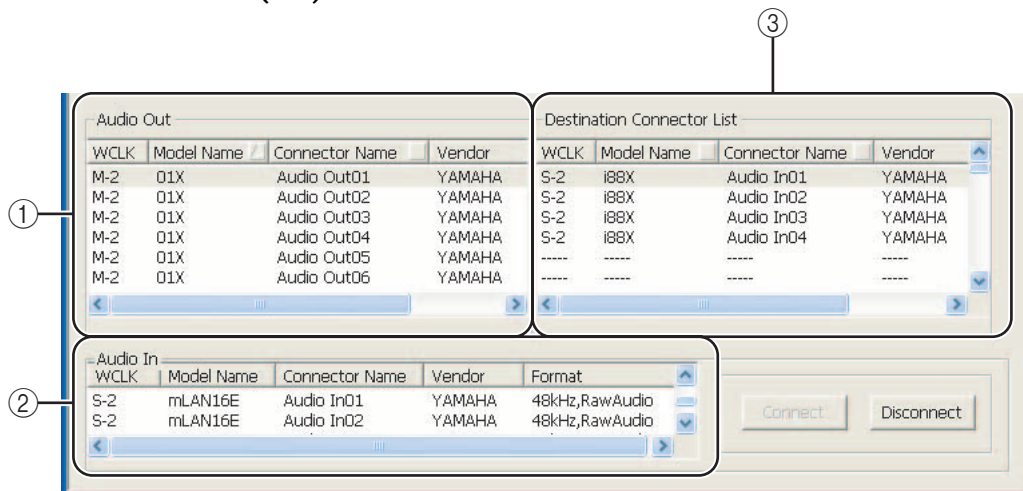
You can view the mLAN connection settings in an mLAN network in a list. List view displays the status of, and enables you to change, audio and MIDI connections.

To switch between Graphic view and List view, in the [View] menu select [Graphic] or [List]. Alternatively, click the [Change View] button in the Tool bar.

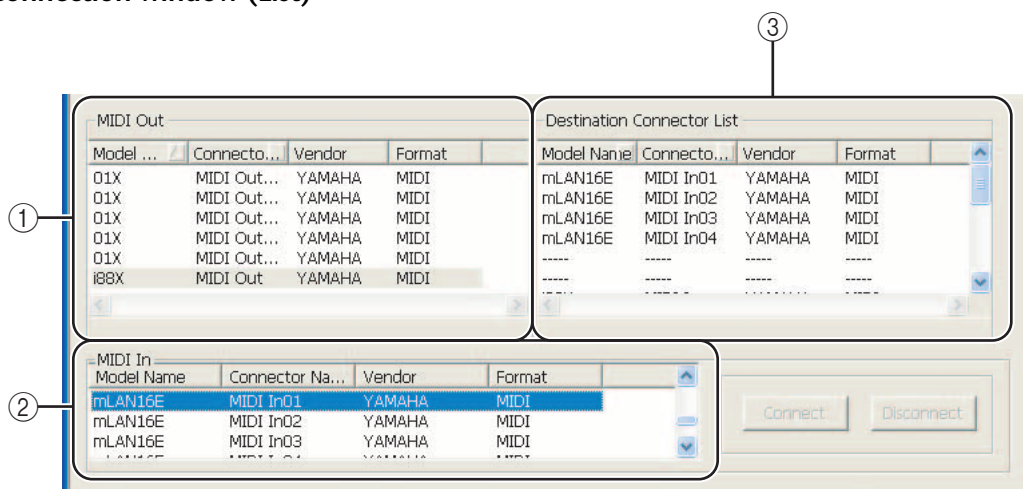
To switch between the Audio Connection window and MIDI Connection window, in the [Connection] menu select [Audio] or [MIDI]. Alternatively, click the [Audio] or [MIDI] button in the Tool bar.

NOTE In List view, you cannot set up wordclock. Some menus are also unavailable. Unavailable menus and Tool bar buttons are grayed-out.

Audio Connection window (List)



MIDI Connection window (List)



① **Audio Out and MIDI Out sections**

Display information regarding the audio or MIDI output connectors for all nodes in an mLAN network.

② **Audio In and MIDI In sections**

Display information regarding the audio or MIDI input connectors for all nodes in an mLAN network.

③ **Destination Connector List section**

Identifies connections between connectors in the Audio Out or MIDI Out sections and input connectors.

■ **Model name**

Indicates the model nickname of the node.

■ **Connector name**

Indicates the connector nickname.

■ **Vendor**

Indicates the manufacturer of the node.

■ **Format**

Indicates the sampling frequency and transmission format of a node.

■ **WCLK**

Indicates the node's wordclock master or slave number. An "M" represents that the node is operating as the master. An "S" represents that the node is operating as a slave. This parameter appears only in the Audio Connection window.

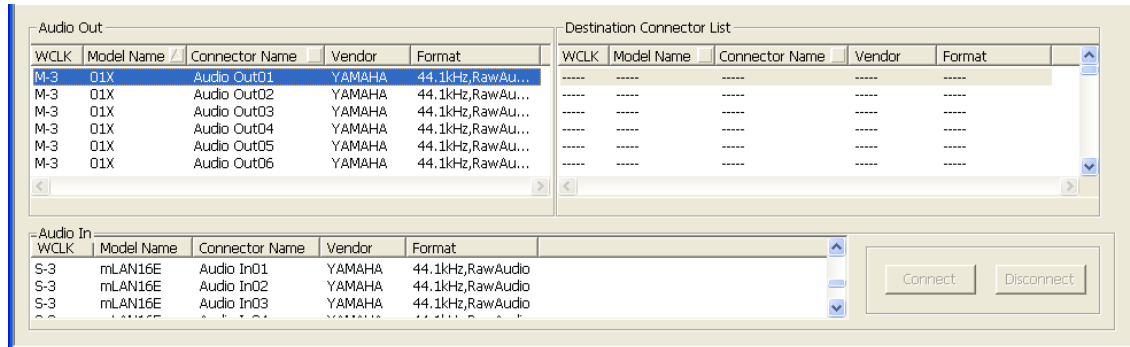
Connecting Connectors in List View

This section describes how to connect the audio and MIDI connectors in List view.

1. In the Audio Out or MIDI Out sections, click the output connector you wish to connect.

To connect multiple connectors simultaneously (group connection), click the first output connector in the output group to be connected, then while holding down the <Shift> key on the computer keyboard, click the last output connector in the group.

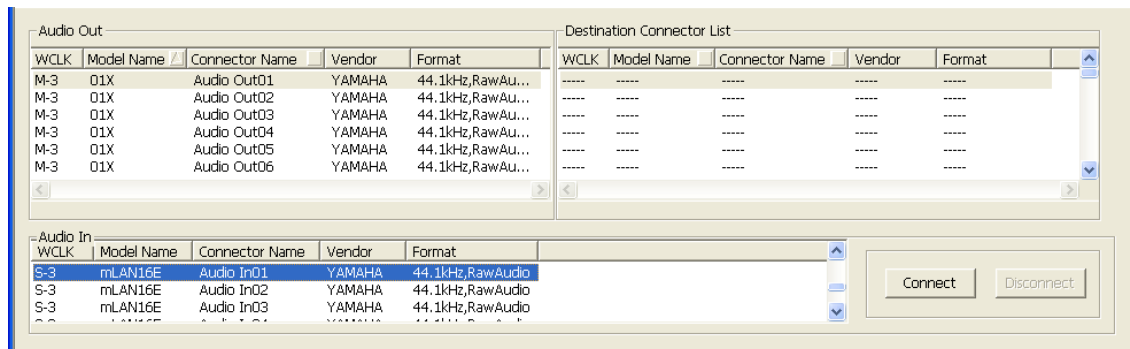
The selected connectors will be highlighted in the list.



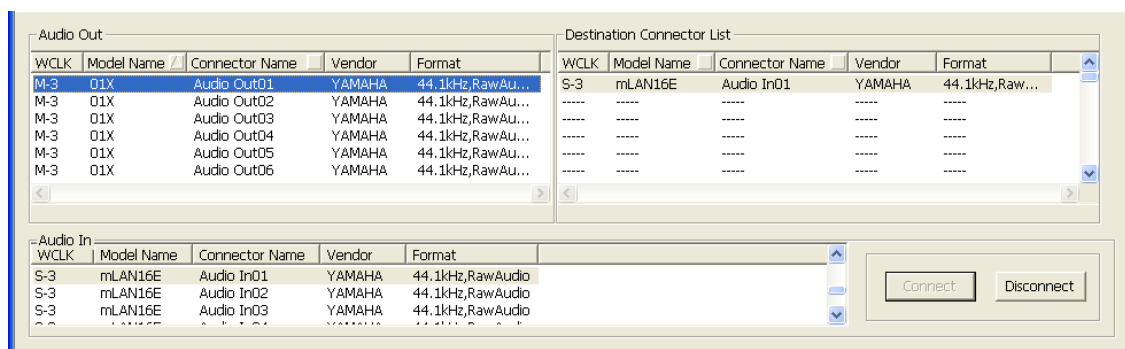
2. In the Audio In or MIDI In section, click the input connector to which you wish to connect.

To connect multiple connectors simultaneously (group connection), click the first input connector in the input group to be connected.

The selected input connectors will be highlighted in the list.



- Click the [Connect] button. The selected input and output connectors connect to each other. The Destination Connector List section displays each input connector that is now connected to a corresponding output connector listed in the Audio Out or MIDI Out column.



NOTE If the input connectors and output connectors are connected incorrectly, the [Connect] button will be grayed-out.

Disconnecting Connectors

This section explains how to disconnect audio and MIDI connectors.

- Select the connector you wish to disconnect in the Audio Out or MIDI Out sections or in the Destination Connector List section.

To disconnect multiple connectors simultaneously (group disconnection), click the first output connector in the group to be disconnected, then hold down the <Shift> key on the computer keyboard and click the last connector in the group.

The selected connectors are highlighted in the list.

- Click the [Disconnect] button.

The selected connectors are disconnected.

Keyboard Shortcuts

Menu	Menu Option	Windows	Macintosh
File	New	1) Alt+F → N 2) Ctrl+N	(Command) N
	Open	1) Alt+F → O 2) Ctrl+O	(Command) O
	Save	1) Alt+F → S 2) Ctrl+S	(Command) S
	Save As	1) Alt+F → A	
	Exit	1) Alt+F → X	(Command) Q
View	Graphic	1) Alt+V → G 2) Ctrl+1	(Command) 1
	List	1) Alt+V → L 2) Ctrl+2	(Command) 2
	Update	1) Alt+V → U 2) Ctrl+3	(Command) 3
	Destination Connector List	1) Alt+V → C 2) Ctrl+4	(Command) 4
	Node Information	1) Alt+V → N 2) Ctrl+5	(Command) 5
	Resource Information	1) Alt+V → R 2) Ctrl+6	(Command) 6
Connection	Audio	1) Alt+C → A 2) Ctrl+7	(Command) 7
	MIDI	1) Alt+C → M 2) Ctrl+8	(Command) 8
	Wordclock	1) Alt+C → W 2) Ctrl+9	(Command) 9
	Single Master	1) Alt+C → S 2) Ctrl+0	(Command) 0
	Input Connector	1) Alt+C → I 2) Ctrl+I	(Command) I
	Output Connector	1) Alt+C → O 2) Ctrl+B	(Command) B
Help	Manual	1) Alt+H → M 2) F1	
	About	1) Alt+H → A	

Error Messages

Data reception error (FIFO full/empty)	Update the information by selecting the [Update] menu option. Alternatively, re-patch wordclock.
DBC packet or format error has occurred.	
Unable to lock to the audio clock frequency.	
Unable to connect to certain connectors.	Make sure that the power to the mLAN devices is turned on. Also, make sure that the IEEE1394 cable is connected securely.
Unable to disconnect from certain connectors.	
Unable to set the number of output channels.	Shut down your DAW, make the necessary settings in Graphic Patchbay, then start the DAW (page 22). Some parameters cannot be changed while the DAW or editor application using the mLAN driver is running.
Unable to set the number of input channels.	
Unable to set the sampling frequency.	
Unable to set the audio synchronization (SYTSync) channel.	
The node cannot be set as wordclock master.	
Unable to set the audio isochronous channel for the mLAN driver.	
Unable to change the number of audio channels for the mLAN driver.	
Unable to set the sampling frequency for the mLAN driver.	
Unable to set the number of MIDI output channels.	
The node cannot be set as wordclock slave.	
mLAN audio connection failed.	In Graphic Patchbay, reduce the number of nodes connected to the computer.
mLAN MIDI connection failed.	
mLAN wordclock connection failed.	

Found an mLAN device not compatible with S400.
The number of available channels will decrease.
You may need to reduce the number of transmission channels to be able to make mLAN connections.
For more information, refer to “Error Messages” or “Troubleshooting” in the mLAN Graphic Patchbay Online Manual.

If you connect even a single mLAN device that does not support S400, all other mLAN devices in the network will match the functions and limitations of the non-S400-compatible device. For example, if you connect an S400-compatible device and an S200-compatible device in a network, the S400-compatible device will conform to the performance of the S200-compatible device. Therefore, the number of transmission channels on each device will be limited. (See the table below.)

Number of transmission channels available in a network that includes a single S200-compatible device and multiple S400-compatible devices:

Number of mLAN devices (including the computer)	Total number of available transmission channels (with a sampling frequency of 44.1 kHz or 48 kHz)	
	Windows*1	Macintosh
2	40	40
3	44	56
4	37	49
5	32*2	43

*1. Applicable if the number of transmission channels on the computer is 32, except if the number of mLAN devices is five.

*2. The number of available transmission channels on the computer is limited to 24.

Using S200-compatible IEEE 1394 devices

When using IEEE 1394 devices of the slower S200 type, the number of available audio transmission channels in the network is reduced. Before connecting an S200-compatible device to the network, make sure to change the number of transmission channels with the following procedure.

1. Change the number of output (transmission) channels of each S400-compatible device from the Node Information (Audio) window so that it does not exceed the total number of output (transmission) channels of all S200 and S400 devices in the network. (Refer to the table at the bottom of the Error Messages section.)

NOTE When connecting an S200-compatible device in step 2, the number of output channels of the S200 device is set to maximum automatically. Confirm the maximum number of output channels of the S200 device you are using, then change the number of output channels on the S400 devices accordingly. For information on the maximum number of output channels, refer to the owner’s manual of your particular S200 device.

2. Connect the S200-compatible device to the computer or the mLAN device in the network.
3. To increase the number of output (transmission) channels of S400-compatible devices, decrease the number of output channels of the S200 devices from the Node Information (Audio) window, and change the number of output channels of the S400 devices.

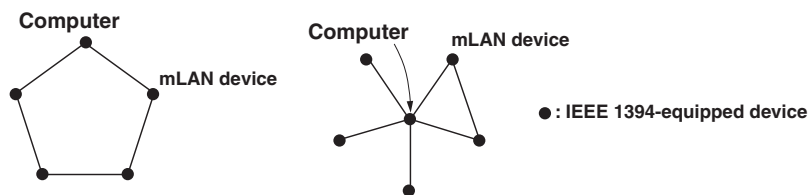
Troubleshooting

If you encounter a problem...

If you hear no sound or a strange sound, first check the items described below and take appropriate action. If the problem persists, consult your Yamaha dealer.

■ Unable to communicate via mLAN

- Has the driver been installed?.....Refer to the Installation Guide.
- Is the mLAN cable properly connected? Check the connection; disconnect the mLAN cable once, then insert it again.
- (For Windows) Is mLAN set to "ON"? From the taskbar, right click on the mLAN Manager icon..... Refer to "Checking after Installation" in the Installation Guide.
- (For Windows) When adding a new IEEE 1394 card, right click on the mLAN Manager icon in the taskbar and select "ON."
..... Refer to "Checking after Installation" in the Installation Guide.
- Is the ACTIVE lamp on the rear panel of the mLAN device lit (in blue)? If it is not lit, check the followings:
 - In mLAN Driver Setup (from taskbar, right click on the mLAN Manager icon (🔌), then "Driver Setup"), is the Status indicator blue? If not, restart the mLAN device and re-enable connection by using mLAN Auto Connector or mLAN Graphic Patchbay.
..... Refer to page 24 and "Connecting the Computer and mLAN devices via mLAN" in the Installation Guide.
- Has connection been enabled with mLAN Auto Connector and/or Graphic Patchbay? Re-enable connection if necessary.
..... Refer to page 24 and "Connecting the Computer and mLAN devices via mLAN" in the Installation Guide.
- Have you changed the device? Even if the model is the same, if the actual device is different, it is necessary to re-enable connection by using Auto Connector and/or Graphic Patchbay. Refer to page 24 and "Connecting the Computer and mLAN devices via mLAN" in the Installation Guide.
- Is there a loop connection? Check the cabling and make sure none of the devices are connected in a loop.



- There may be a limit on the IEEE 1394 interface of your computer as to the number of ports that can be used simultaneously. Check how many ports can be used simultaneously. Refer to "Maximum Number of Connected Nodes" on page 19 and 21.
- Turn off all devices on the mLAN network (except the computer) and re-connect each device one-by-one until the device causing the problem is found.
- (For Windows) (When removing the mLAN bus from the [Safely Remove Hardware] setting of the task bar.) Restart the computer when using mLAN again.
- With Macintosh notebook computers such as the iBook and PowerBook, always first connect the mLAN device and mLAN cable then turn on the power of the mLAN device, before starting up the computer.

- Make sure that you set up the wordclock correctly. Also, make sure that one node is assigned as master and the other nodes are assigned as slaves.See page 24.

■ **The computer processing speed is too slow.**

- If multiple S200-compatible devices are connected to the network, connecting mLAN devices in mLAN Graphic Patchbay may require more time.

■ **Unable to change the mLAN settings**

- (For Windows) Is the mLAN (WDM) driver selected as the default audio device for the system?
 - Select [Start | Control Panel | Sounds and Audio Devices | Voice].
Make sure that something other than "mLAN Audio 01" is selected for the [Voice playback] and [Voice recording] settings.
 - Select [Start | Control Panel | Sounds and Audio Devices | Audio].
Make sure that something other than "mLAN Audio 01" is selected for the [Sound playback] and [Sound recording] settings.
 - In "MIDI music playback," select any option other than the range of options from "mLAN MIDI Out" through "mLAN MIDI Out (8)."
- (For Windows) Select [Start | Control Panel | Sounds and Audio Devices | Sounds]. And select "No sounds" in the [Sound scheme], then execute again.
- If you cannot quit mLAN (by selecting "OFF" after right clicking the mLAN icon in the task bar), end the processes listed below manually. ([Ctrl] + [Alt] + [Delete] → [Processes] → select process → [End process]) When finished, start mLAN Manager to change the mLAN settings again.
 - mLANVDevice.exe
 - mLANTFamily.exe
 - mLANSoftPH.exe
 - mLANManager.exe

To change mLAN settings, select [Start | (All) Programs | Start Up], then start mLAN Manager.
- (When a message such as "file cannot be found" appears when uninstalling:) Try executing the installation once more, then uninstall again.

■ **(Windows) mLAN Manager (the mLAN icon in the Task bar) has disappeared.**

- Select [Start | (All) Programs | Start Up (or mLAN Tools)], then select mLAN Manager.

■ **A connected mLAN device is not recognized.**

- Refresh the information by selecting [View], then [Update] in the Menu bar. If the device is still not recognized, turn mLAN Manager off, then turn it on, then select [Update] to latest information.See page 6

■ **Connections are changed each time you start mLAN Graphic Patchbay.**

- If the network includes a non-S400-compatible device, the total number of transmission channels of all devices will be reduced. mLAN Graphic Patchbay recalls the previous connections of the mLAN devices in the order of power-up. Channels in excess of the permitted number will not be connected.
- If five or more mLAN devices (including a computer) have been connected to a network, the total number of transmission channels for all devices will be limited. For example, if the sampling frequency is set to 44.1 kHz or 48 kHz, the number of available channels on a Windows computer would be 86 channels, and on Macintosh it would be 98 channels.

■ **It takes a while to start mLAN Graphic Patchbay or to update the information using the Update menu option.**

- If you try to update the network information after you connect or disconnect an mLAN device that does not support S400, the system changes the mLAN transmission speed. This extra process may slow down the operation. However, the process will not affect the subsequent performance.