




Voicesolo FX150

| | | | | | |
|---|----|---|----|---------------------------------|----|
| Important safety instructions | 1 | Show me how! | 17 | Controls – aka | |
| | | Solo singer | 18 | “Pushing buttons” | 31 |
| Before you begin | 4 | Solo singer using a TC-Helicon vocal processor | 19 | Advanced controls | 34 |
| Introduction | 7 | Solo singer using a TC-Helicon vocal processor (alternate) | 20 | Technical Specifications | 36 |
| Set up – aka | | Two singers | 21 | | |
| “Where do I put this thing?” | 9 | Singer with acoustic guitar | 22 | | |
| | | Singer with electric guitar | 23 | | |
| Connecting – aka | | Singer with guitar and 3rd party guitar effects processor | 24 | | |
| “Exploring the ins and outs” | 11 | Singer & acoustic guitarist in a band with monitor mix | 25 | | |
| Input 1: combo jack for XLR or ¼” input | 12 | Singer & acoustic guitarist in a band with monitor mix (alternate) | 26 | | |
| Input 2: combo jack for XLR or ¼” input | 12 | Singer & electric guitarist in a band with monitor mix | 27 | | |
| Aux input | 12 | Singer with a TC-Helicon processor in a band with monitor mix | 28 | | |
| Out | 13 | Singer & guitarist with a TC-Helicon processor in a band with monitor mix | 29 | | |
| USB connector | 13 | Singer & guitarist with a 3rd party guitar processor in a band with monitor mix | 30 | | |
| Monitoring explained | 14 | | | | |

| | |
|----------------------------|------------------|
| Product | VoiceSolo FX150 |
| Product (firmware) version | 1.2 |
| Document | Reference manual |
| Document version/date | 2017-10-10 |

Important safety instructions

1. Read these instructions.
2. Keep these instructions.
3. Heed all warnings.
4. Follow all instructions.
5. Do not use this apparatus near water.
6. Clean only with a dry cloth.
7. Do not block any ventilation openings. Install in accordance with the manufacturer's instructions.
8. Do not install near any heat sources such as radiators, heat registers, stoves, or other apparatus (including amplifiers) that produce heat.
9. Do not defeat the safety purpose of the polarized or grounding-type plug. A polarized plug has two blades with one wider than the other. A grounding-type plug has two blades and a third grounding prong. The wide blade or the third prong is provided for your safety. If the provided plug does not fit into your outlet, consult an electrician for replacement of the obsolete outlet.
10. Protect the power cord from being walked on or pinched, particularly at plugs, convenience receptacles, and the point where they exit from the apparatus.
11. Only use attachments/accessories specified by the manufacturer.
12. Use only with a cart, stand, tripod, bracket, or table specified by the manufacturer, or sold with the apparatus. When a cart is used, use caution when moving the cart/apparatus combination to avoid injury from tip-over. 
13. Unplug this apparatus during lightning storms or when unused for long periods of time.

14. Refer all servicing to qualified service personnel. Servicing is required when the apparatus has been damaged in any way, such as power-supply cord or plug is damaged, liquid has been spilled or objects have fallen into the apparatus, the apparatus has been exposed to rain or moisture, does not operate normally, or has been dropped.

Caution

You are cautioned that any change or modifications not expressly approved in this manual could void your authority to operate this equipment.

Service

- All service must be performed by qualified personnel.
- There are no user-serviceable parts inside.

Warning

- To reduce the risk of fire or electric shock, do not expose this apparatus to rain or moisture and objects filled with liquids, such as vases, should not be placed on this apparatus.
- This apparatus must be earthed.
- Use a three wire grounding type line cord like the one supplied with the product.
- Be advised that different operating voltages require the use of different types of line cord and attachment plugs.
- Check the voltage in your area and use the correct type.

| Voltage | Line plug according to standard |
|--------------|---|
| 110 to 125 V | UL817 and CSA C22.2 no 42. |
| 220 to 230 V | CEE 7 page VII, SR section 107-2-D1/IEC 83 page C4. |

- This equipment should be installed near the socket outlet and disconnection of the device should be easily accessible.
- To completely disconnect from AC mains, disconnect the power supply cord from the AC receptacle.
- The mains plug of the power supply shall remain readily operable.
- Do not install this device in a confined space.
- For use at an altitude of 2000 m or lower.
- Do not open the unit – risk of electric shock inside.

EMC/EMI

Electromagnetic compatibility/
Electromagnetic interference

This equipment has been tested and found to comply with the limits for a Class B digital device, pursuant to part 15 of the FCC rules.

These limits are designed to provide reasonable protection against harmful interference in residential installations. This equipment generates, uses and can radiate radio frequency energy and, if not installed and used in accordance with the instructions, may cause harmful interference to radio communications. However, there is no guarantee that interference will not occur in a particular installation.

If this equipment does cause harmful interference to radio or television reception, which can be determined by turning the equipment off and on, the user is encouraged to try to correct the interference by one or more of the following measures:

- Reorient or relocate the receiving antenna.
- Increase the separation between the equipment and receiver.
- Connect the equipment into an outlet on a circuit different from that to which the receiver is connected.
- Consult the dealer or an experienced radio/TV technician for help.

For customers in Canada

This Class B digital apparatus complies with Canadian ICES-003.

Cet appareil numérique de la classe B est conforme à la norme NMB-003 du Canada.

Explanation of graphic symbols



The lightning bolt triangle is used to alert the user to the presence of uninsulated “dangerous voltages” within the unit’s chassis that may be of sufficient magnitude to constitute a risk of electric shock to humans.



The exclamation point triangle is used to alert the user to presence of important operating and service instructions in the literature accompanying the product.

Before you begin

About this manual

This reference manual will help you learn understanding and operating your VoiceSolo FX150.

You can download the most current version of this reference manual from
tc-helicon.com/products/voicesolo-fx150/support

To get the most from this reference manual, please read it from start to finish, or you may miss important information.

Getting support

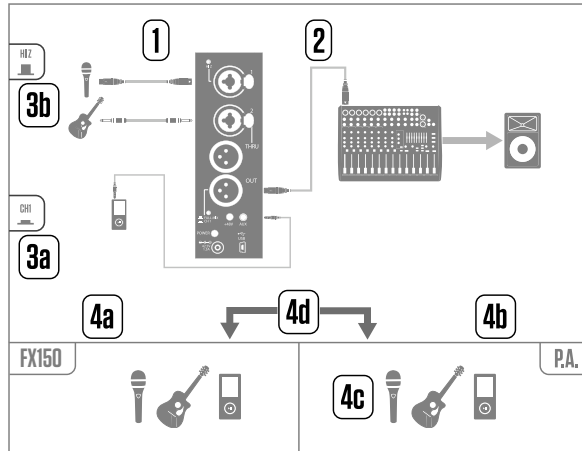
If you still have questions about the product after reading this reference manual, please get in touch with TC-Helicon Support:
tc-helicon.com/support/

Please register your VoiceSolo FX150

To register your VoiceSolo FX150 using the VoiceSupport software, launch VoiceSupport and click on the ACCOUNT button.

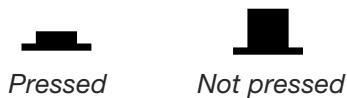
! Please note that registration of your product is NOT required to use VoiceSupport, download presets, update firmware or contact support.

Diagrams



To give you clear and concise representations of what goes where, we have provided several connection diagrams in the “Connecting – aka “Exploring the ins and outs”” on page 11 section. There are a few things we would like you to keep in mind as you follow these diagrams:

- Signal sources that go into your VoiceSolo FX150 (e.g. microphone or guitar) will always be shown to the *left* of the back panel image (1).
- “Downstream” devices (mixers, speakers) will always be shown to the *right* of the back panel image (2).
- There are two “call out” boxes on the left side of each diagram, showing whether or not the HI Z button and the FULL MIX/CH1 button are pressed.



- The box in the *lower left corner* shows what signals you will hear from your VoiceSolo FX150.
- The box in the *lower right corner* shows what you will hear from your mixer/PA speakers. When we refer to a “P.A.” or a “mixer” in this manual, we actually mean any sound gathering and sound producing sources. This could be anything from a “stick system” or a portable/all-in-one loudspeaker system to powered studio monitors or even a DAW recording interface.
- Please note that we do not account for other inputs or instruments in these diagrams – so you won’t see pictures of drums etc.
- There are separate diagrams for hooking up TC-Helicon vocal processors. Some of our processors come with a headphone output and some don’t. We will try to account for both cases.
- We have tried to put as many combinations and examples into our diagrams as possible, but we may have missed one or two. Using the complete set of diagrams, you should be able to create your own unique connection setup. Just bear in mind the key points, like whether you need to press the FULL MIX/CH1 button.

Legend

| | |
|--|------------------------------|
| | VoiceSolo FX150 back panel |
| | Microphone |
| | Acoustic guitar |
| | Electric guitar |
| | Keyboard or other instrument |
| | TC-Helicon processor |
| | Guitar FX processor |
| | Mixing desk |
| | P.A. |
| | Monitor mix |
| | XLR cable |
| | TRS cable |
| | TS (guitar) cable |
| | 1/8” cable |

Introduction

Thank you for purchasing the TC-Helicon VoiceSolo FX150!

In a live setting, getting a good monitor sound can be extremely challenging. If you are fortunate enough to have a dedicated monitor engineer going from gig to gig with you, then you probably aren't reading this manual anyway – so let's get to the rest of us.

If you can't hear yourself sing, play or speak, you can't perform at your best. Getting feedback (the good kind) allows you to adjust your mix, your pitch, intensity and many other facets of your performance, giving your audience the best possible experience.

Get ready to elevate your live performances with this flexible and powerful personal stage monitor!

In the box: the goodie list

The VoiceSolo FX150 box should contain the following items:

- VoiceSolo FX150
- Power supply
- Vertical mount adapter
- Multilingual quick guide

If you are missing an item, please contact your retailer immediately.

Inspect all items for signs of transit damage. In the unlikely event of transit damage, inform the carrier and supplier.

If damage has occurred, keep all packaging as it can be used as evidence of excessive handling force.

Now, let's get to the setup!

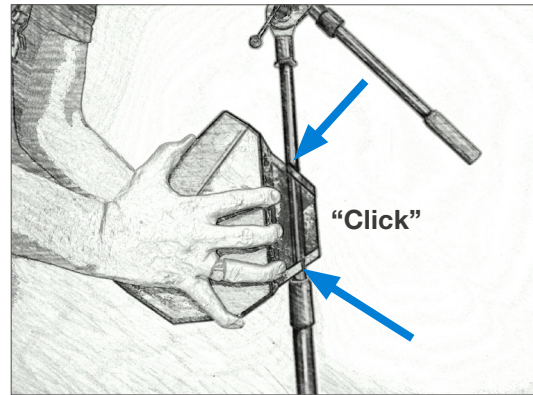
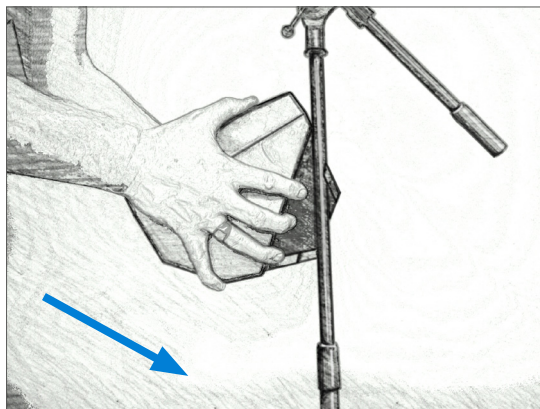
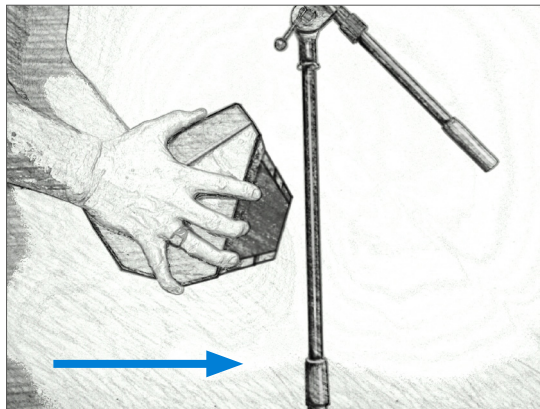
Set up – *aka* “Where do I put this thing?”

The first thing we should do is figure out where you are going to put the FX150. You have got a few options, depending on your situation.

Mic stand mount

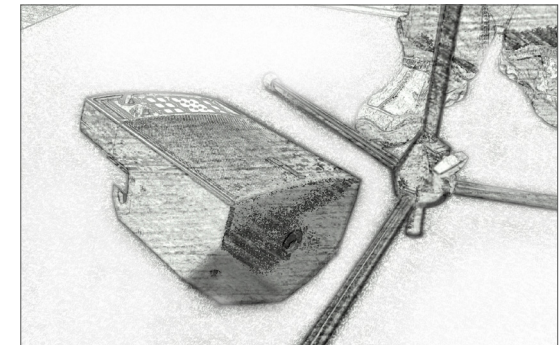
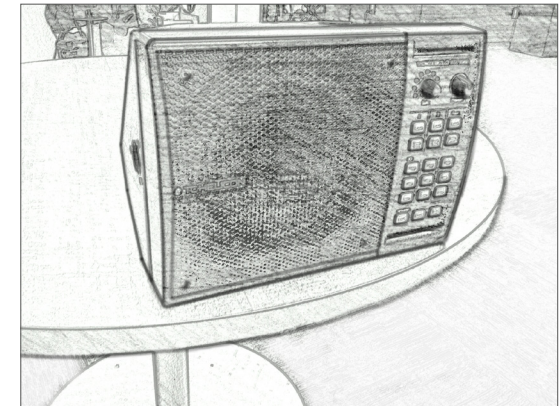
This is our preferred location. It's nice and close at hand for adjustments. It also provides a great angle for crystal clear sound.

To connect the FX150 to your mic stand:



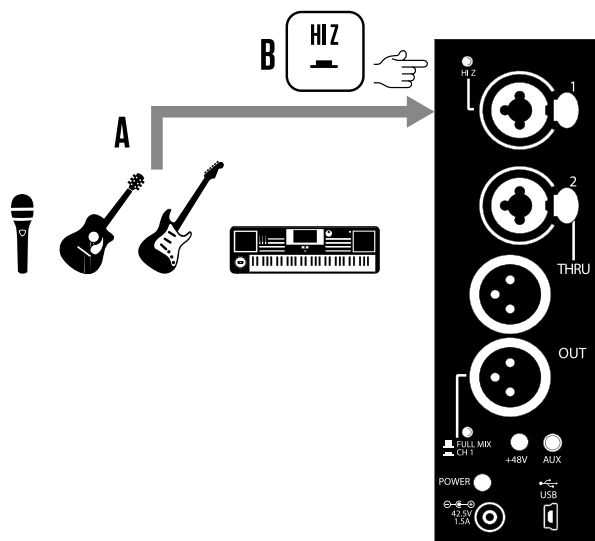
Some mic stands have a “thinner” top post. If this is the case for you, the ideal mounting location for your FX150 is directly on top of the tightening mechanism (or “chuck”) between your lower and upper mic stand sections.

Tabletop or floor



Connecting – *aka* “Exploring the ins and outs”

Input 1: combo jack for XLR or 1/4” input

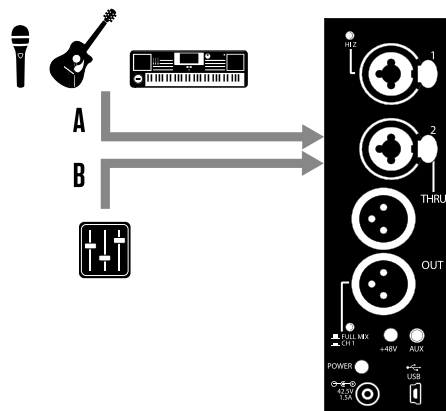


- A. This is where you will plug in your microphone, guitar or other instrument.
- B. If you are using a guitar without a preamp, plug it in here and press the “Hi Z” button next to the input.

“How do I know if I have a preamp in my guitar?”

- **Electric guitars:** It’s uncommon to have a preamp in any electric guitar. Use Input 1 with the “Hi Z” button pressed.
- **Acoustic guitars:** Does your guitar need a battery? That’s an easy way to tell if you have an onboard preamp. If you are unsure, contact your guitar manufacturer to find out what your guitar is using.

Input 2: combo jack for XLR or 1/4” input

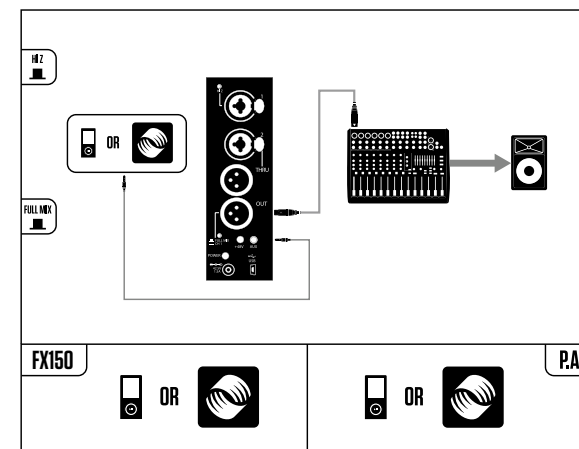


- A. This input is great for a second mic, a pre-amped guitar or another line level instrument.
 - B. Input 2 can also act as a monitor input if your mixing board is capable of sending a monitor mix.
- We will explore monitor mixes and their use on the upcoming pages.

Aux input

The 1/8” input is perfect for two different types of connections.

- If you are playing to backing tracks, use the Aux jack to connect your media player.
- If you use a TC-Helicon (or 3rd party) vocal/guitar processor, connect the processor’s headphone out to the FX150’s Aux jack. This setup can also give you a second channel of “More ME!” which we will discuss in the monitor mix sections.

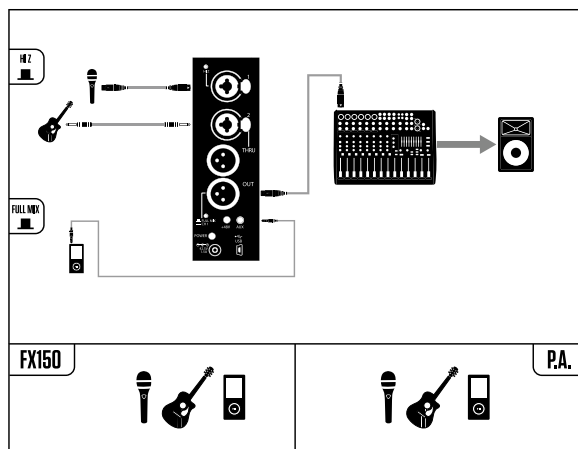


Out

This XLR output can operate in two ways, depending on whether you are using Input 2 as a “normal” input for guitar/vocals etc. or for a monitor mix coming from the Front-of-House (FOH) mixer.

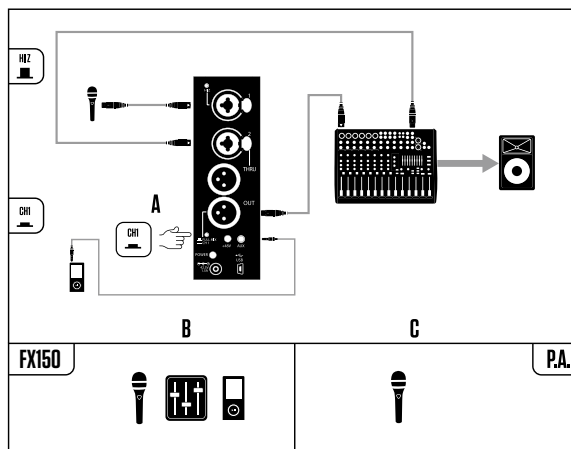
First we will cover FULL MIX:

When using Inputs 1 & 2 for guitar/vocals etc., the OUT will send “what you hear” coming from the FX150’s speaker to a PA or mixer. This output also contains sounds from the AUX input.



This is the most likely way a solo performer will use the FX150, especially in a smaller venue.

Next, we will cover CH1 mode:



- A. When you have pressed the FULL MIX/CH1 switch, the OUT will send only the sounds from Input 1.
- B. The combination of Input 1, Input 2 (Monitor Mix) and Aux is what you will hear from the FX150’s speaker.
- C. You will only hear Input 1 coming from the P.A.

When looking at the diagram above, keep the “Diagrams” (page 6) section in mind. Grey lines represent cables and the images in the bottom boxes show “What you hear” from your FX150 and from the P.A.

The P.A. images only show signals that “belong” to you. We don’t show the rest of the band.

USB connector

The USB connector on the FX150 allows for updates of the unit’s firmware (if and when such an update is released).

Updating firmware is done via our VoiceSupport program. You can download VoiceSupport at

tc-helicon.com/products/voicesupport/

The USB connector does **not** pass audio.

Monitoring explained

What is a Monitor Mix?

Typically, in a reasonably sized venue, you will have a few wedge style monitors on stage.

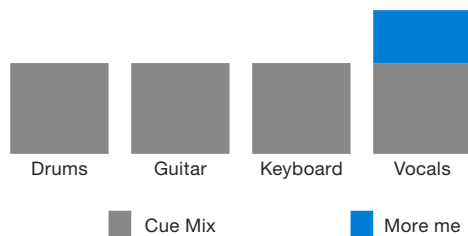
The Front-of-House (FOH) engineer (better known as the sound guy or gal) can route signals from the main mixer back to the stage. This is called a monitor or cue mix.

In an ideal situation, each person on stage will get a unique blend of the instruments they wish to hear through their monitor.

In a lot of venues, the number of monitor mixes is limited to one or two (or none, ugh). If there are two mixes, the lead singer usually commandeers one mix (jerk!) and the band shares the other.

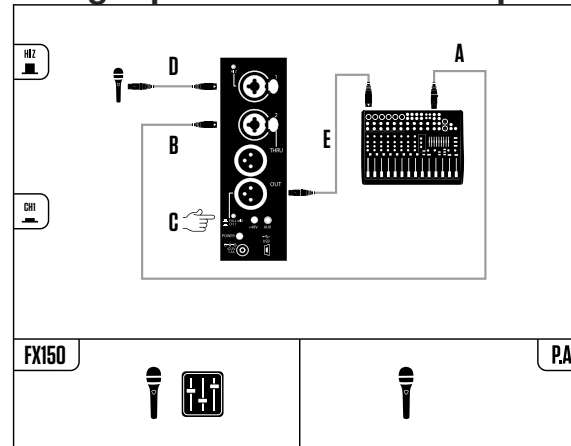
This is less than ideal, since each band member probably wants to hear a bit more of themselves relative to the other instruments.

The FX150 allows you to use a single mix and add “More ME!” to that signal.



“More me” for a singer

Using Input 2 as a Monitor Input

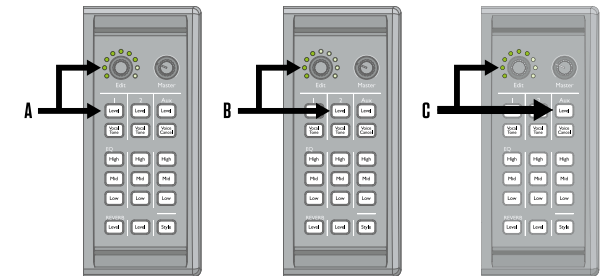


- The FOH engineer sends a fairly even “monitor” mix of all instruments to the stage.
- Plug that “monitor” mix cable into Input 2 on the FX150.
- Press the FULL MIX/CH1 switch.
- Plug your microphone or instrument into Input 1.
- The FOH engineer uses the FX150’s OUT to get your signal back to the main mixer. Because you pressed the FULL MIX/CH1 switch, only the signal from Input 1 gets sent to the FOH mixer. This prevents a feedback loop in the monitor signal path.

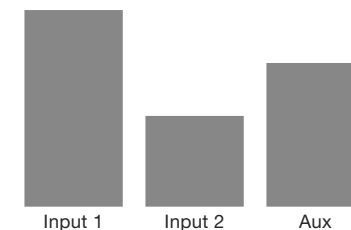
If you plug a media player or multi effect unit (via its headphone out) into the AUX while CH1 is engaged, you will ONLY hear those sounds through your FX150’s speaker. The signal will NOT be passed via the OUT. You will need to connect the main output from your multi effect unit to the PA.

Now here comes the best part...

- Input 1 contains your primary (“More ME!”) signal.
- Input 2 contains the monitor mix (everything else).
- Aux contains your secondary (“More ME!”) signal.

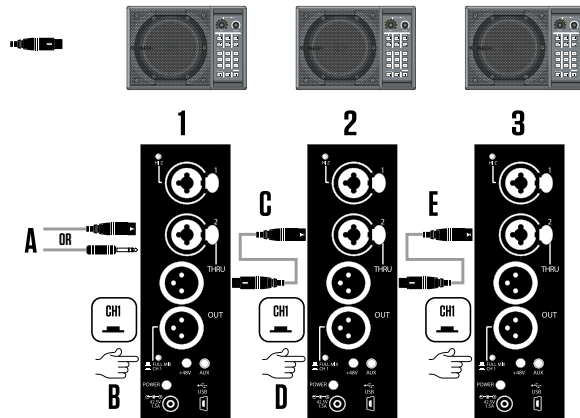


By adjusting the levels of Input 1, Input 2 and Aux relative to each other, you can create your own custom mix with as much “ME!” as you like!



“More me” mix

Monitor THRU Connections



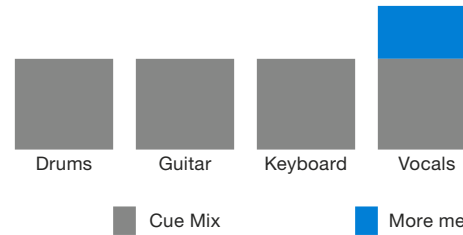
If you have multiple VoiceSolo FX150 units on stage, you can “daisy chain” them all together using Input 2 and THRU, as shown above.

- A. At the first FX150, plug the FOH monitor mix into INPUT 2.
- B. Press the FULL MIX/CH1 switch.
- C. Connect an XLR cable between THRU on the first FX150 and INPUT 2 on the next FX150.
- D. Remember to press the FULL MIX/CH1 switch on the second FX150 as well.
- E. Repeat the process for each FX150 on stage.

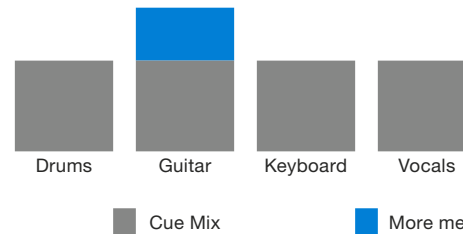
! Remember that you will need to connect each FX150’s OUT to the FOH mixer!

Depending on what’s plugged into Input 1 and Aux on each FX150, each performer can have their own “More ME!” mix.

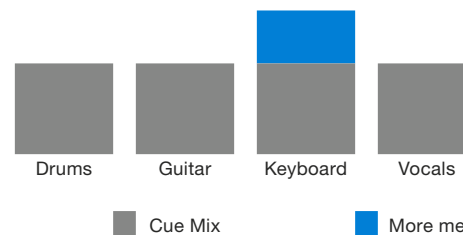
Here are some examples of how “More ME!” might look and sound for different musicians in a band.



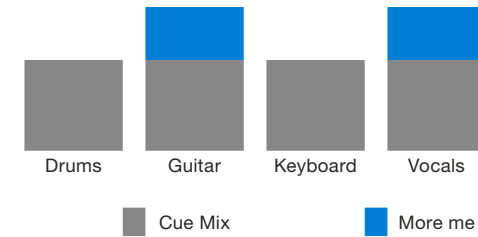
“More me!” vocals



“More me!” guitar



“More me!” keyboards



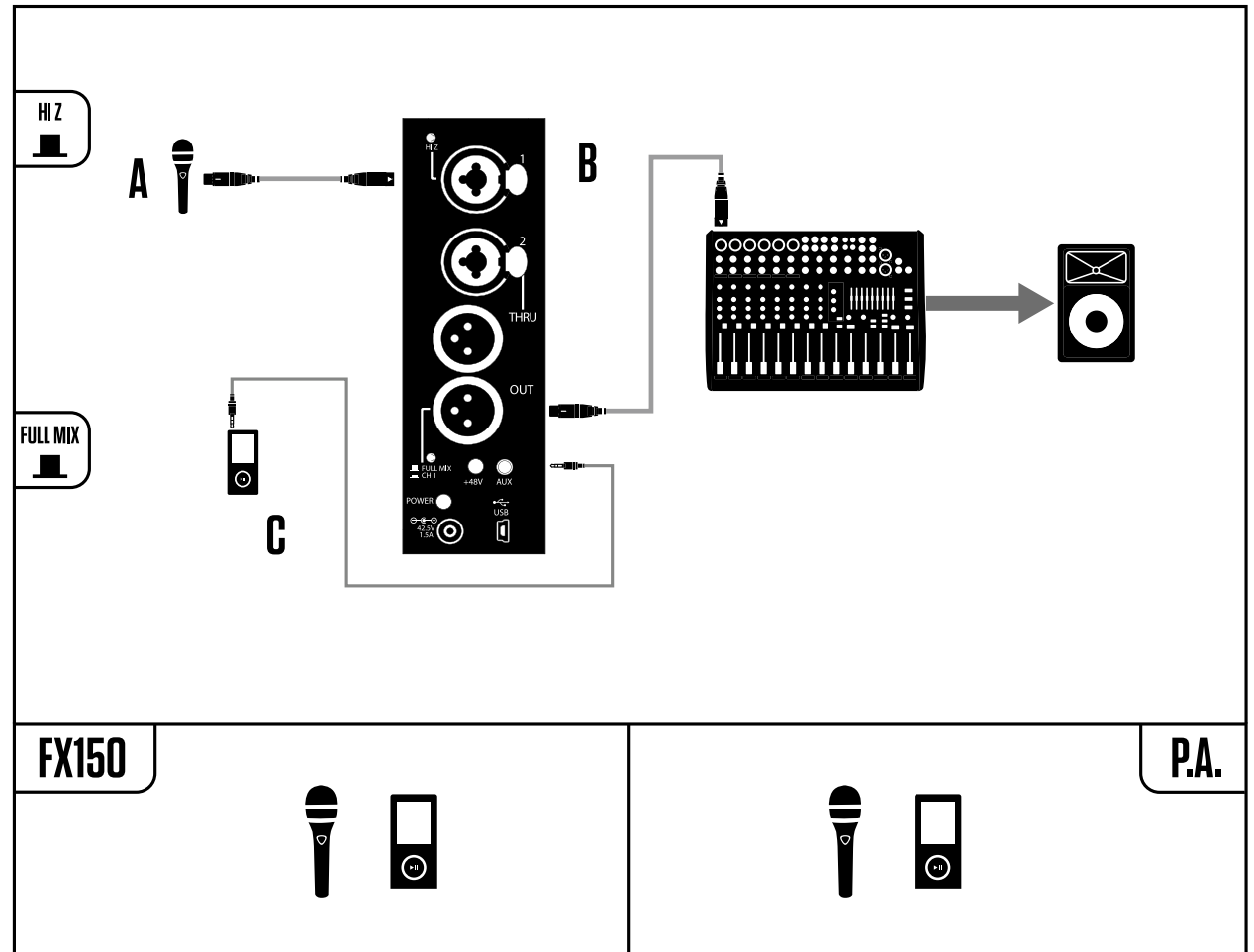
“More me!” guitar & vocals

The “More me! guitar & vocals” example is a special case. Here, a multi effect unit’s head-phone output is connected to the FX150 Aux input, while the multi effect unit’s main outs are connected to the FOH mixer.

Show me how!

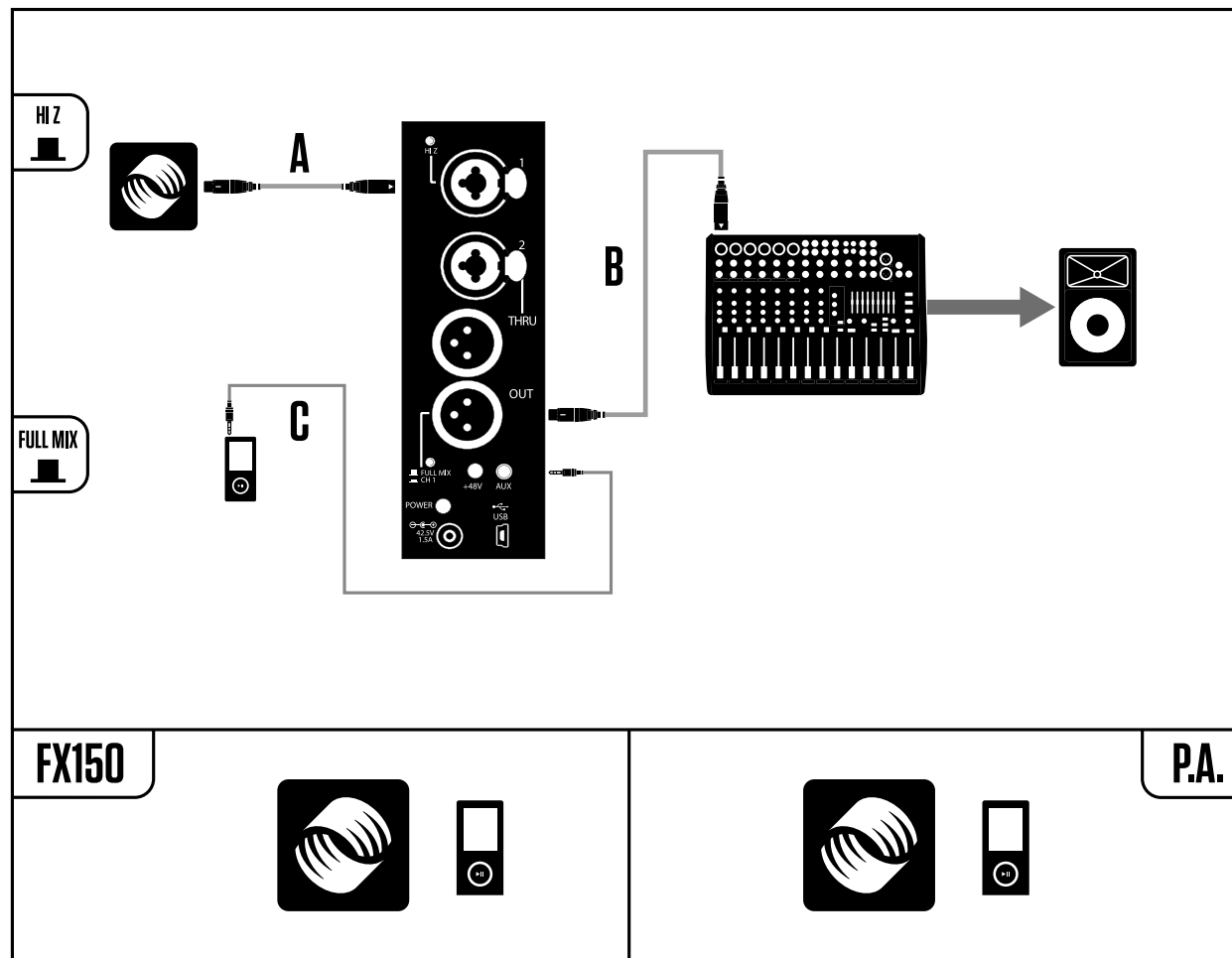
Solo singer

- A. Plug your microphone into Input 1.
- B. Connect the FX150's OUT to your PA's Mixer.
- C. Got backing tracks? Connect your audio source to the AUX using a 1/8" cable.



Solo singer using a TC-Helicon vocal processor

- A. Plug in your TC-Helicon unit into Input 1.
- B. Connect the FX150's OUT to your PA's Mixer.
- C. Got backing tracks? Connect your audio source to the AUX using a 1/8" cable.

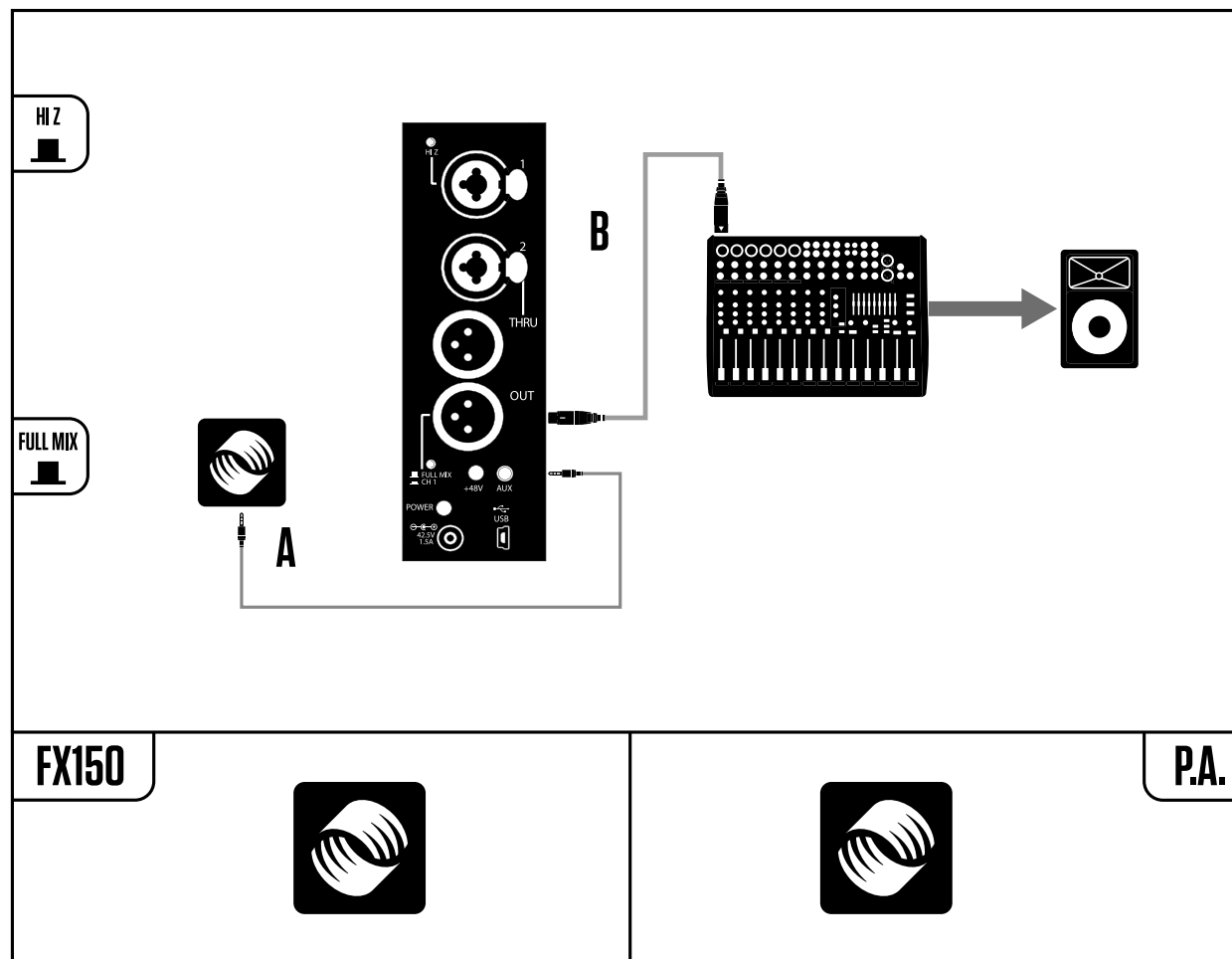


Solo singer using a TC-Helicon vocal processor (alternate)

- A. Plug your TC-Helicon unit's headphone out into the FX150's AUX.
- B. Connect the FX150's OUT to your PA's Mixer.

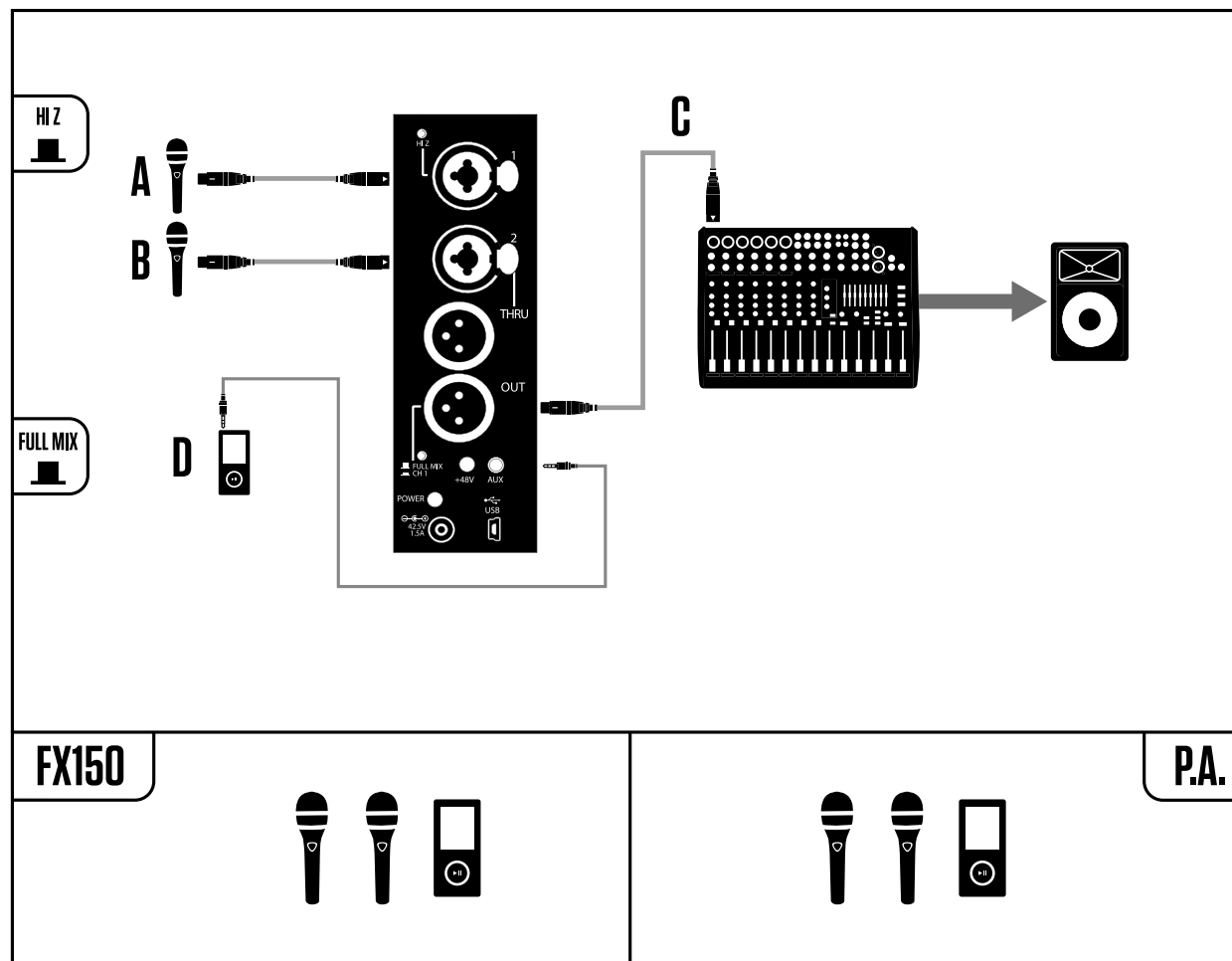
This setup leaves Inputs 1 and 2 free for other mics or instruments. You will have to figure out how to crowd all those people around the FX150 though.

If your TC-Helicon processor has an AUX input, you can connect your media player there to add backing tracks to the signal. Use the mixer in your TC-Helicon processor to balance the vocals and backing track.



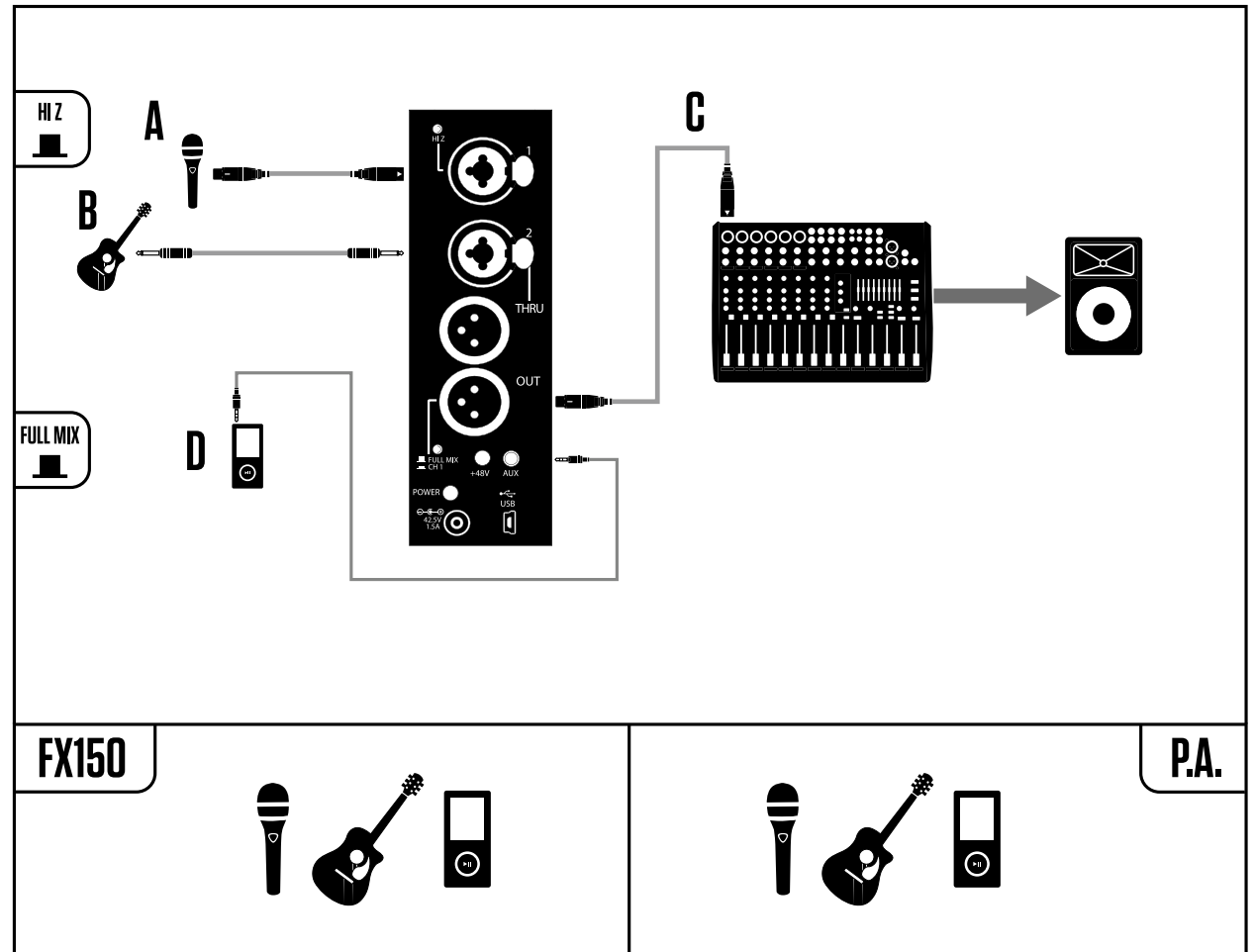
Two singers

- A. Plug your microphone into Input 1.
- B. Plug your singing partner's microphone into Input 2.
- C. Connect the FX150's OUT to your PA's Mixer.
- D. Got backing tracks? Connect your audio source to the AUX using a 1/8" cable.



Singer with acoustic guitar

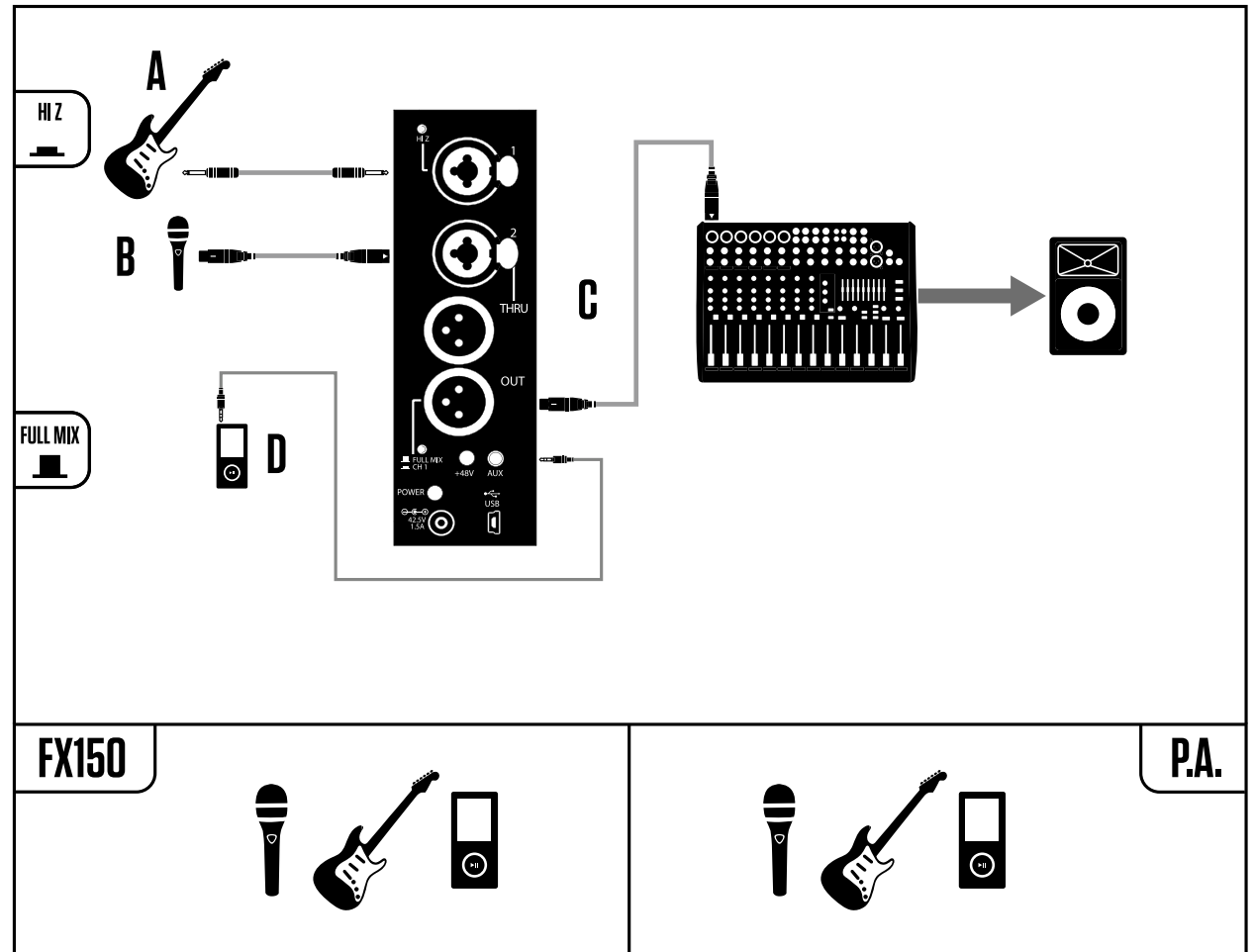
- A. Plug your microphone into Input 1.
- B. Plug your guitar into Input 2.
- C. Connect the FX150's OUT to your PA's Mixer.
- D. Got backing tracks? Connect your audio source to the AUX using a 1/8" cable.



Singer with electric guitar

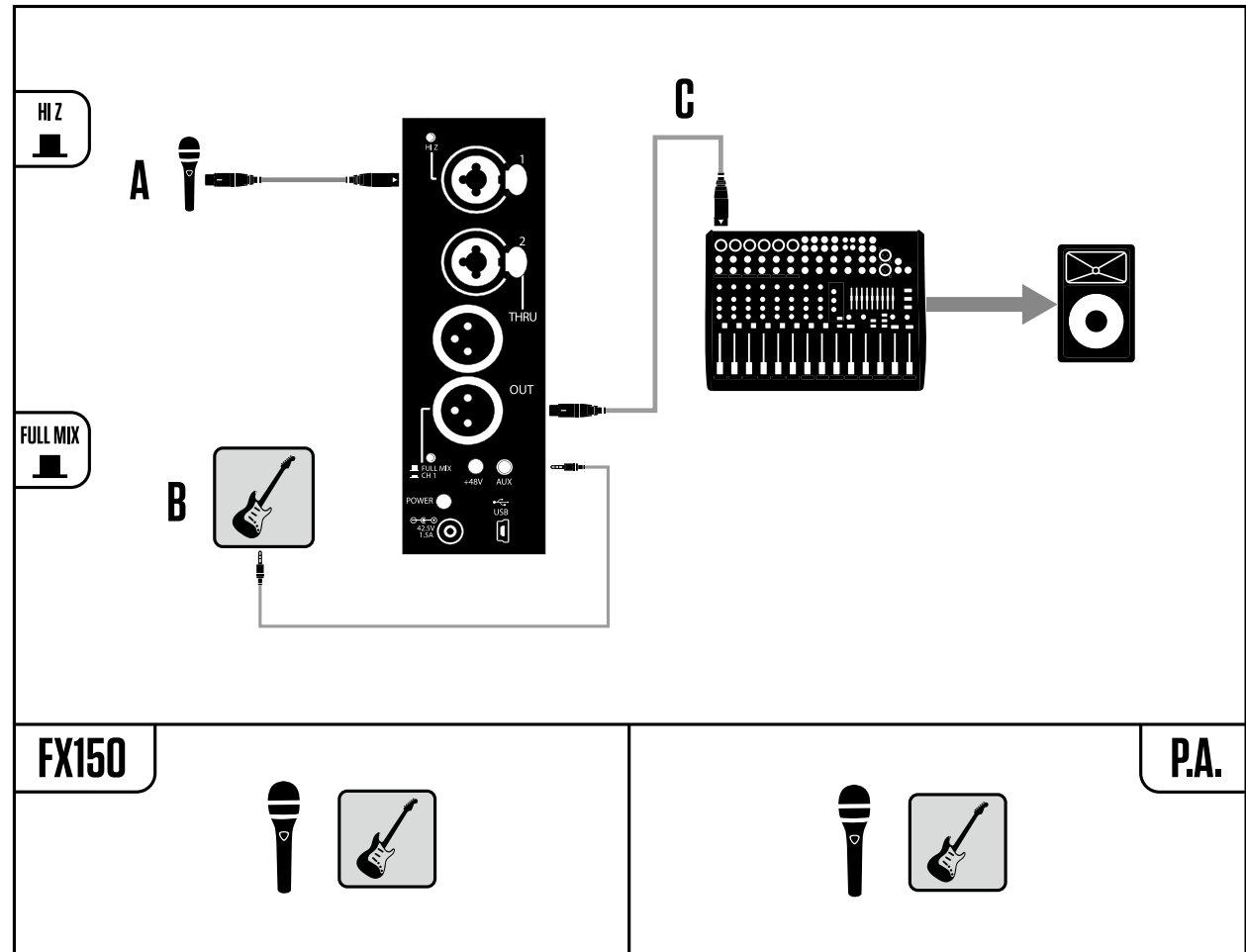
- A. Plug your guitar into Input 1.
- B. Plug your microphone into Input 2.
- C. Connect the FX150's OUT to your PA's Mixer.
- D. Got backing tracks? Connect your audio source to the AUX using a 1/8" cable.

Don't forget to press the HI Z switch!



Singer with guitar and 3rd party guitar effects processor

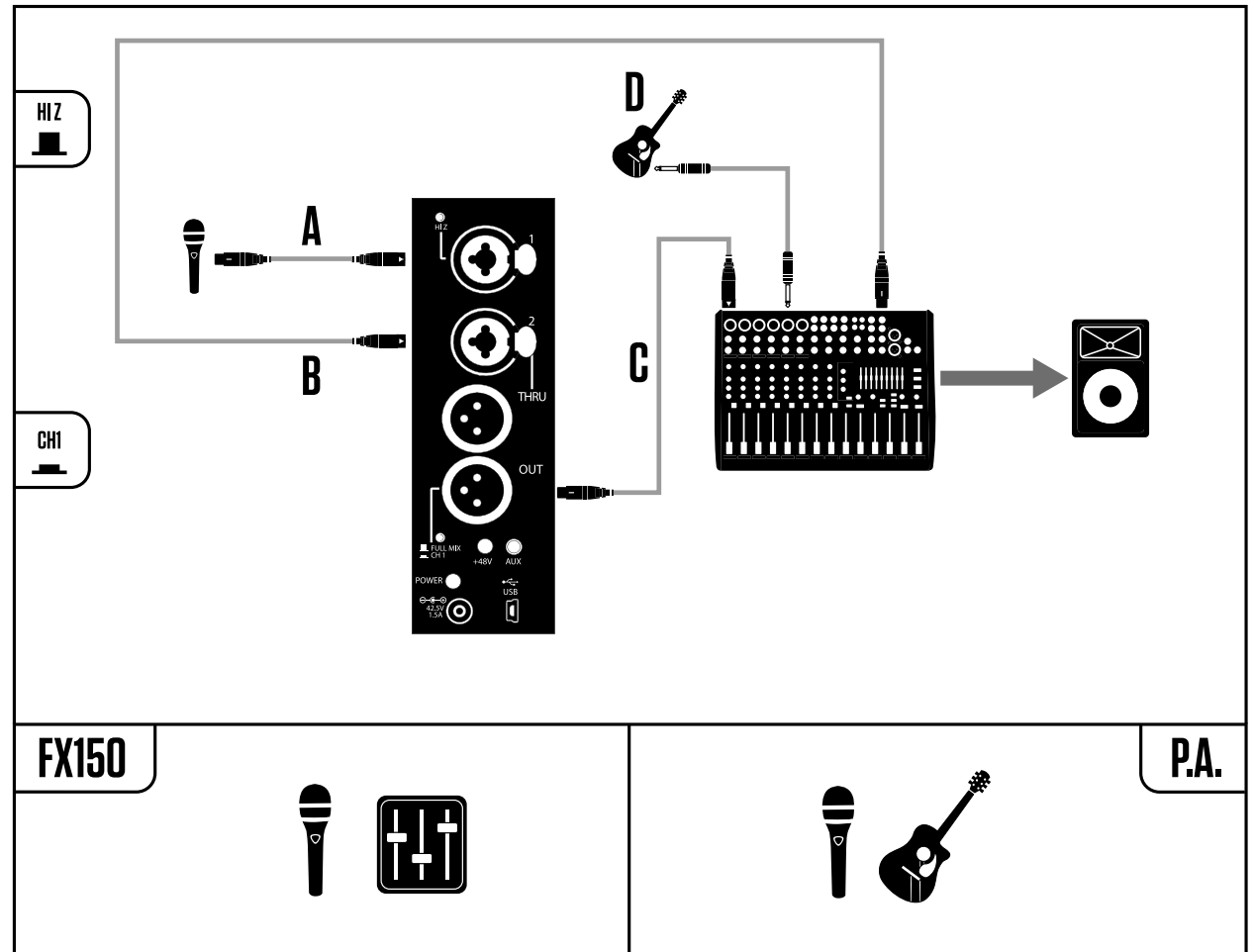
- A. Plug your mic into Input 1.
- B. Connect the headphone out from your 3rd party processor into the FX150's AUX using an 1/8" cable.
- C. Connect the FX150's OUT to your PA's Mixer.



Singer & acoustic guitarist in a band with monitor mix

- A. Plug your microphone into Input 1.
- B. Plug the Monitor Mix from FOH into Input 2.
- C. Connect the FX150's OUT to your PA's Mixer.
- D. Plug your guitar into an input on your PA's mixer.

Don't forget to press the FULL MIX/CH1 switch!

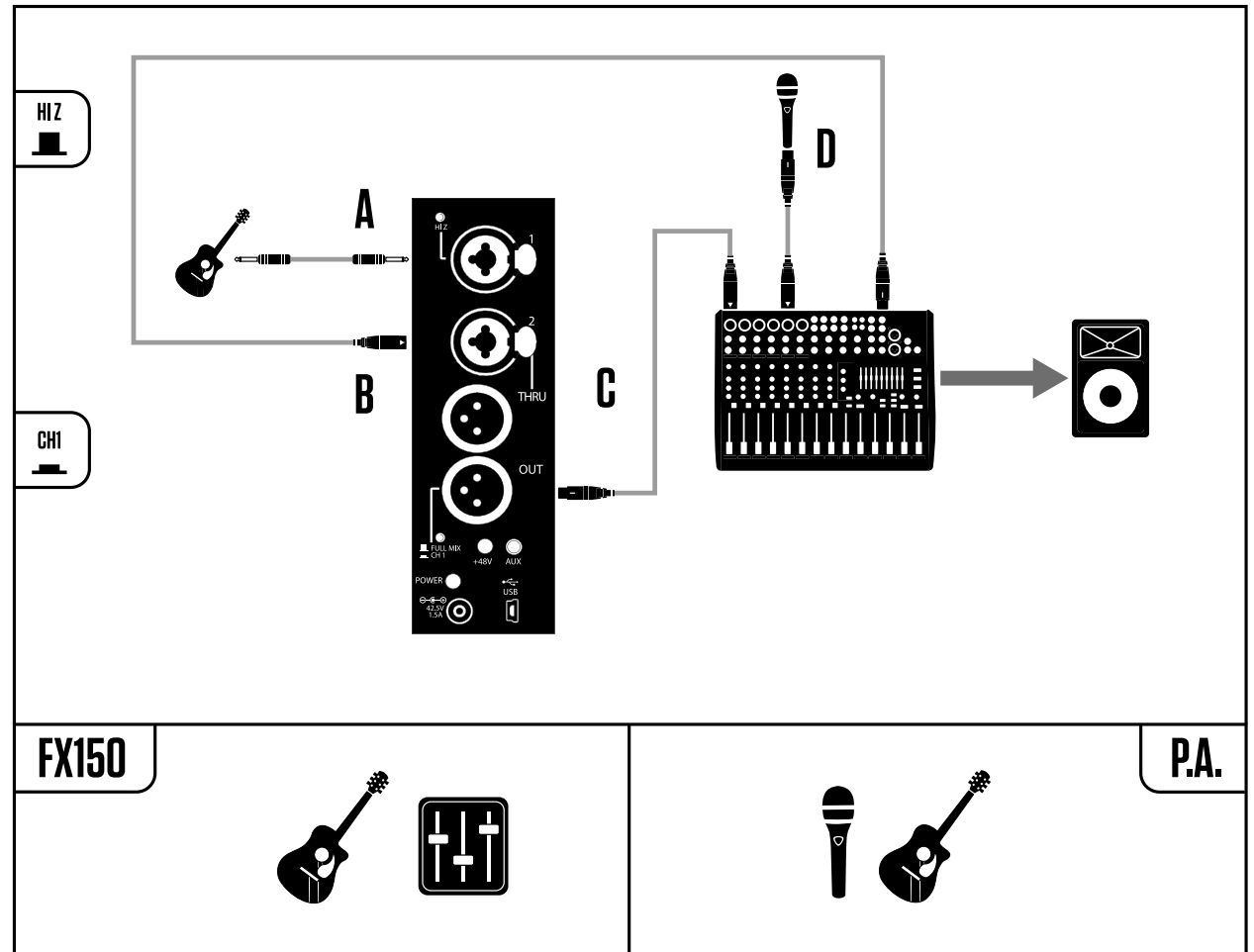


Singer & acoustic guitarist in a band with monitor mix (alternate)

- A. Plug your guitar into Input 1.
- B. Plug the Monitor Mix from FOH into Input 2.
- C. Connect the FX150's OUT to your PA's Mixer.
- D. Plug your mic into an input on your PA's mixer.

Don't forget to press the FULL MIX/CH1 switch!

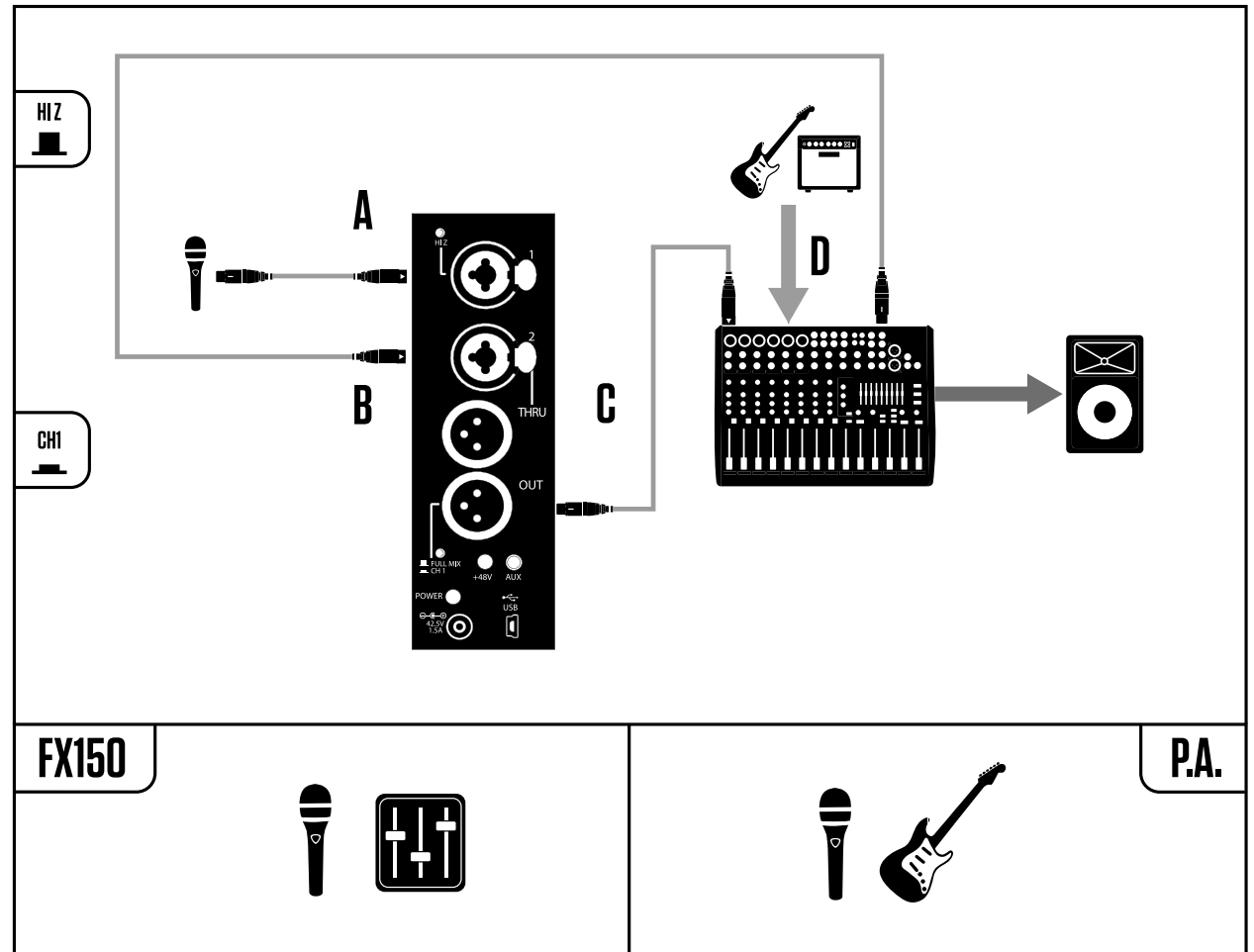
This is a good configuration for a worship setup. Typically the vocal monitor mix is quite good but you may have trouble hearing your instrument. This allows "More ME!" for guitar.



Singer & electric guitarist in a band with monitor mix

- A. Plug your microphone into Input 1.
- B. Plug the Monitor Mix from FOH into Input 2.
- C. Connect the FX150's OUT to your PA's Mixer.
- D. Mic your guitar amp.

Don't forget to press the FULL MIX/CH1 switch!

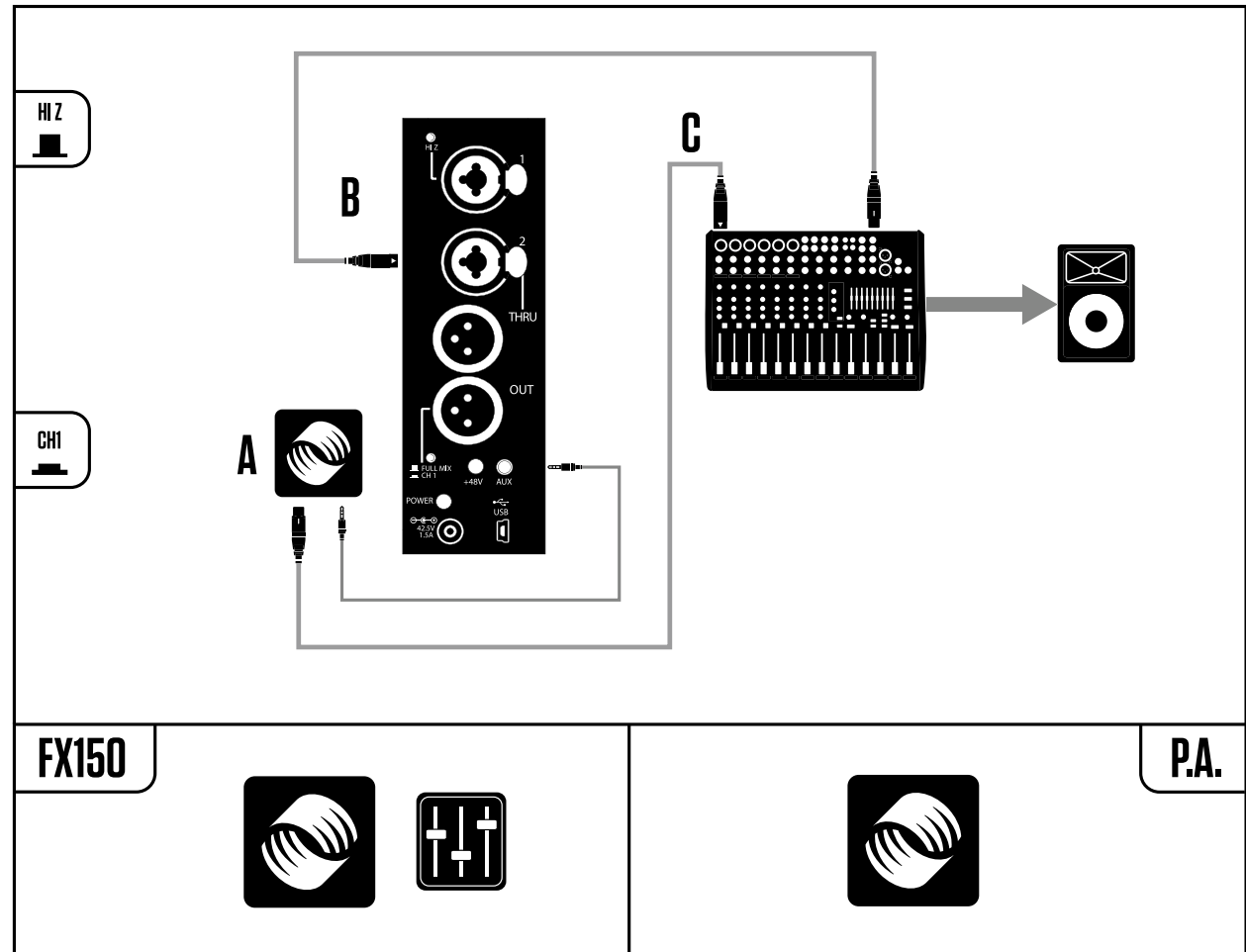


Singer with a TC-Helicon processor in a band with monitor mix

- A. Plug the Headphone OUT from your TC-Helicon unit into the AUX on the FX150.
- B. Plug the Monitor Mix from FOH into Input 2.
- C. Connect the output of your TC-Helicon processor to the mixer.

Don't forget to press the FULL MIX/CH1 switch!

This configuration leaves Input 1 free for an additional instrument or mic.

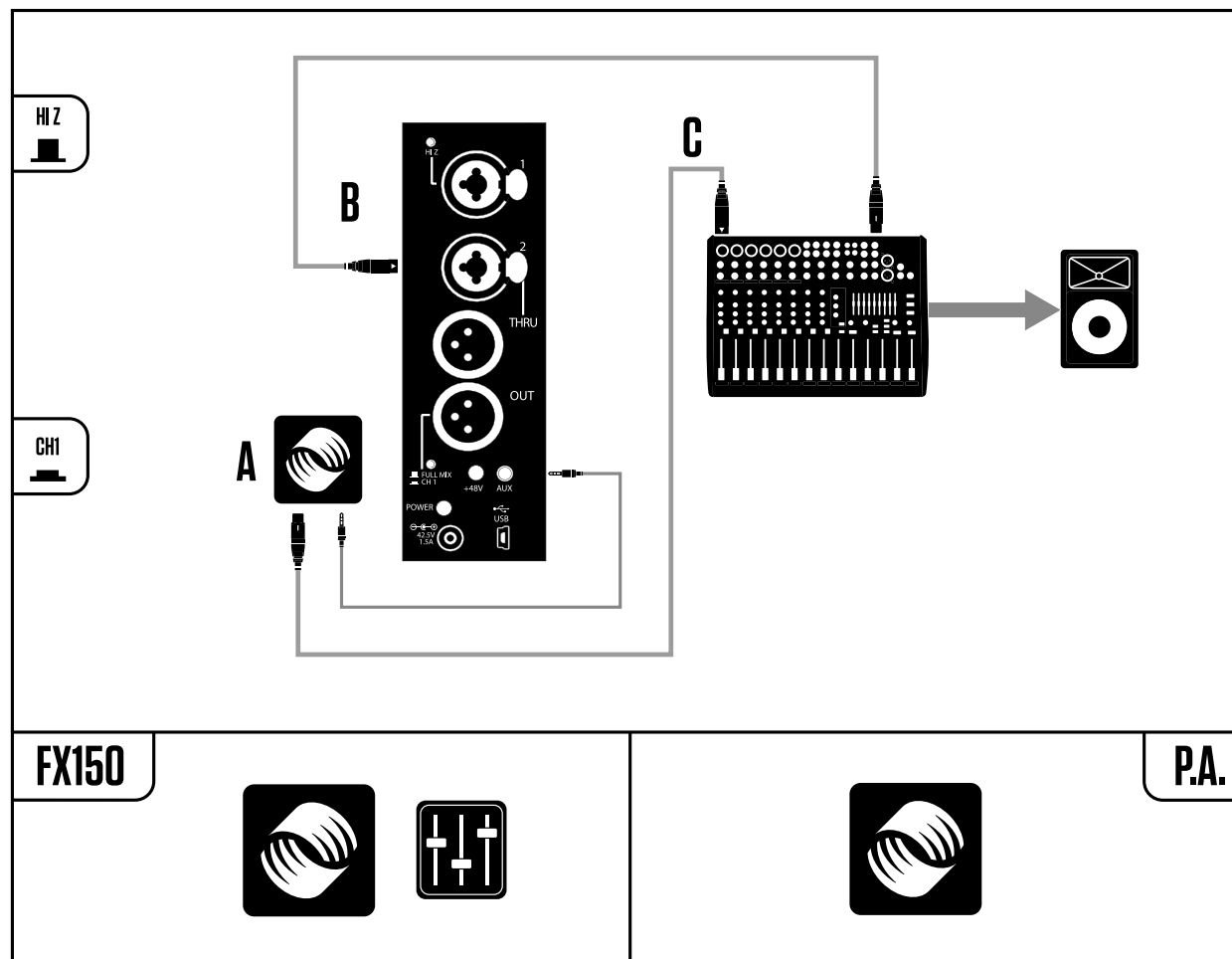


Singer & guitarist with a TC-Helicon processor in a band with monitor mix

- A. Plug the Headphone OUT from your TC-Helicon unit into the AUX on the FX150.
- B. Plug the Monitor Mix from FOH into Input 2.
- C. Plug your TC-Helicon processor's main out into the mixer.

Don't forget to press the FULL MIX/CH1 switch!

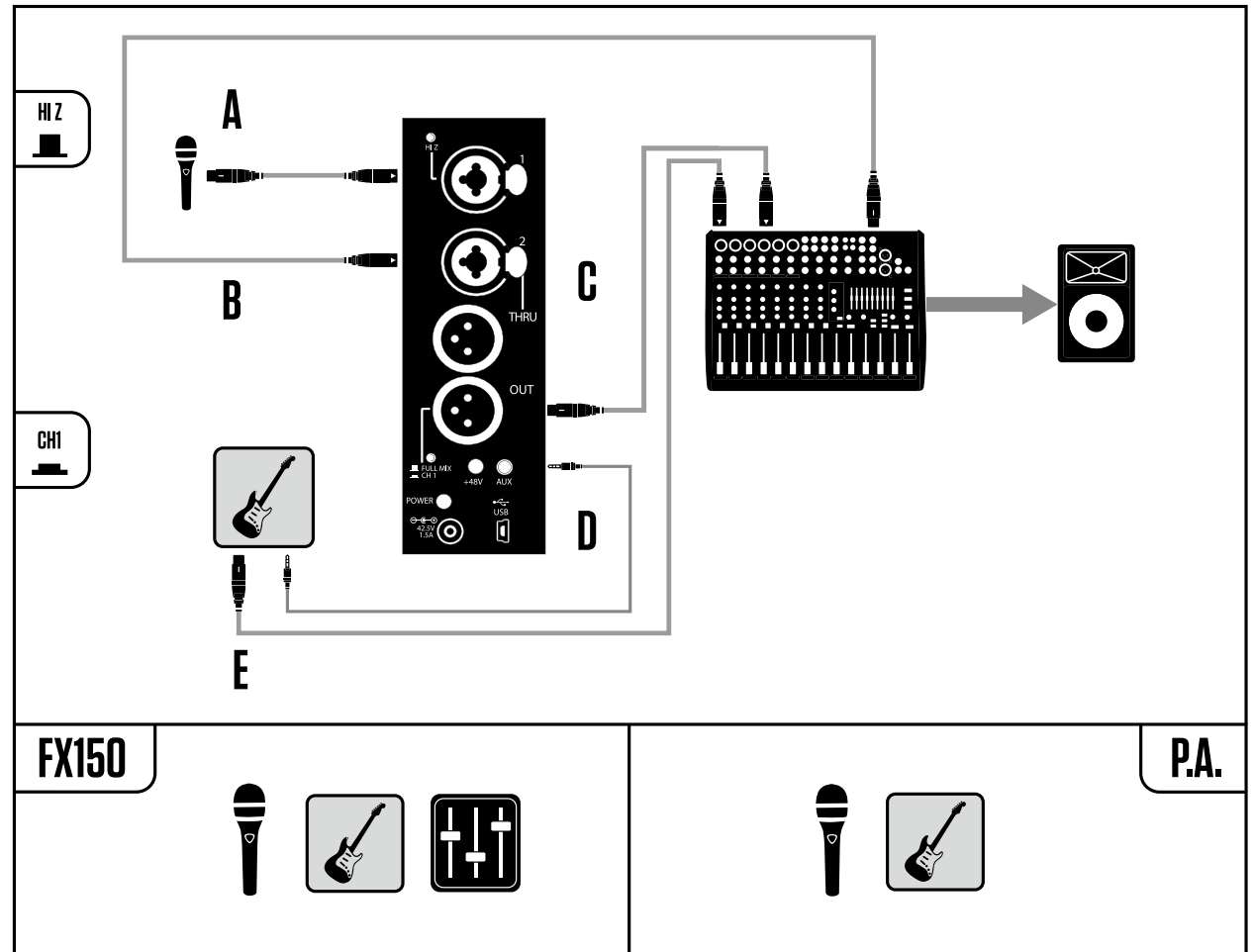
This setup is great for a TC-Helicon unit with both vocal and guitar processing, such as VoiceLive Play GTX, VoiceLive 2, VoiceLive 3, VoiceLive Touch, VoiceLive Touch 2 or Harmony G-XT.



Singer & guitarist with a 3rd party guitar processor in a band with monitor mix

- A. Plug your microphone into Input 1.
- B. Plug the Monitor Mix from FOH into Input 2.
- C. Connect the FX150's OUT to your PA's Mixer.
- D. Connect your guitar processor's headphone out to the FX150's AUX using an 1/8" cable.
- E. Connect the main outs from your guitar processor to the mixer.

Don't forget to press the FULL MIX/CH1 switch!



Controls – *aka* “Pushing buttons”

There are two knobs on the FX150:

1. The Edit knob controls parameters depending on selection.



The Edit knob has a semi-circle of LED’s surrounding it. From left to right, these LED’s represent minimum to maximum values for each parameter. LED’s may light one at a time or in groups, depending on how many options are available.



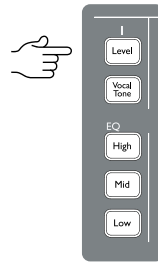
2. The Master knob controls the speaker volume.



The Master knob does NOT change the volume of the OUT connection.

Each channel has several controls. The controls for input 1 and input 2 are identical, so we will just describe them once.

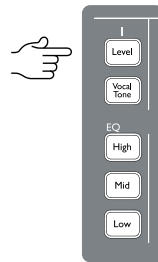
To adjust any of the parameters listed below, push the button for the parameter that you’d like to change: Level, High, Mid, Low, Style etc.



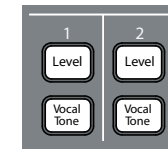
Use the Edit knob to make changes.



Press the button again to exit and save your changes.



Inputs 1+2



- Press the “Level” button and use the Edit knob to control the volume of the associated channel. If the Vocal Tone button lights red at any time during your performance, the Input is clipping and the level should be reduced.
- Press the “Vocal Tone” button to switch the Voice Tone section of the associated channel on or off. The Voice Tone section includes an adaptive EQ, compression, de-essing and gating. Using Vocal Tone is highly recommended for microphone inputs.

EQ

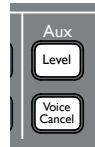


- Press the “High” button and use the Edit knob to control the high frequency band of the associated channel’s EQ.
- Press the “Mid” button and use the Edit knob to control the mid frequency band of the associated channel’s EQ.
- Press the “Low” button and use the Edit knob to control the low frequency band of the associated channel’s EQ.

If you have Vocal Tone turned on, any EQ adjustments will affect the adaptive EQ. Think of these adjustments as “fine tuning” for the Vocal Tone.

If you prefer more broad control over the EQ, turn Vocal Tone off.

Aux



- Press the “Level” button of the Aux input and use the Edit knob to control the volume of the Aux signal.
If the Vocal Cancel button lights red at any time during your performance, the Aux is clipping and the level should be reduced.
- Press the “Vocal Cancel” button to switch the Vocal Cancel feature on or off. When activated, Vocal Cancel will attempt to remove vocals from recorded music.

The ability of Voice Cancel to remove vocals from recorded music is highly dependent on the original mix and other sonic qualities of the source material.

Reverb



- Press the “Level” button in the Reverb section and use the Edit knob to control the amount of reverb of the associated channel.
- Press the “Style” button and use the Edit knob to set the reverb style.

The available reverb styles are:

1. Snappy Room
2. Warehouse
3. Broadway Hall
4. Amsterdam Hall
5. Wooden Chamber
6. Bright Plate
7. Bright Chamber
8. Indoor Arena
9. Hockey Arena

The Reverb style is global for both inputs 1 and 2. This means that you cannot have a different reverb style on each channel – but you can have different reverb amounts.

In CH1 mode, Reverb is only applied to the signal on Input 1. Reverb will not be applied to Input 2, as the incoming signal is likely a monitor mix.

Advanced controls

Input 1 trim

We have pre-set the input trim on Input 1 such that you shouldn't need to adjust it.

If you do need to make a change, you may do so ONLY in CH1 mode.

Press and HOLD the LEVEL button on the input you'd like to change.

Use the Edit knob to increase or decrease the gain.

Press the LEVEL button again to confirm your changes and exit.

Input 1 metering

We offer visual input metering for Channel 1, when CH1 is the output mode.

To activate the input meter, press and hold Channel 1's LEVEL button for a few seconds.

The buttons will light up to show how much input signal is coming into Channel 1. The lights will "bounce" up and down as the level changes.

Ideally, you want to see the Vocal Tone button lighting up yellow when you are singing/playing at your loudest. If the Vocal Tone button turns red, the input is overloading, and you should turn the level down slightly, following the Input Trim instructions above.

Mic control

The FX150 takes advantage of Mic Control-enabled microphones to allow control.

First, make sure the +48V (Phantom Power) switch is pressed IN on the back of the FX150 unit. Mic Control can't work without Phantom Power.

To enable Mic Control on Channel 1 or Channel 2, press and hold the Reverb Level button for five seconds. You will need to perform this procedure on each channel that you'd like Mic Control active on.

When Mic Control activates, you will see the Level button blink a few times.

To disable Mic Control, repeat the above process for each channel. The button will blink again to verify that Mic Control has been turned off.

MP-75

You can use Mic Control on the MP-75 to toggle Reverb on and off, which is useful if you'd like to talk to your audience without Reverb on your voice.

MP-76

The four additional buttons on MP-76 are only supported on Channel 2. The control scheme is:

- UP: Reverb on/off
- LEFT: Volume down
- RIGHT: Volume up
- BOTTOM: Channel mute

Channel 2 level is displayed on the MP-76 LCD screen. The display will flash when the channel is muted.

Factory reset

If you wish to restore your FX150 to its factory settings, press and hold all three LOW buttons (in the EQ section) while powering on the unit. Continue holding the buttons until the unit has fully powered up.

Auto Bass Extension

Firmware 1.2 and later includes a new feature: automatic bass extension. The bass extension algorithm borrows power during quieter sections of music and applies it to low frequency content, increasing bass output and extending the response down as low as 50 Hz. Bass extension is enabled by default when you update your FX150 to the newest firmware. In most cases, this feature will result in optimal sound quality, but there are two cases where it is best to disable this feature:

1. FX150 paired with a subwoofer: when bass extension is enabled, the low frequency response will vary with the overall output level. When bass extension is disabled, the FX150 low frequency response is fixed at 135 Hz, which works much better when used in conjunction with a subwoofer.
2. FX150 as a drum monitor: if there is a period of low output (the space between drum hits, for example) the algorithm will boost the low frequency response. A loud kick drum hit after a low output period will cause excessive limiting and the sound quality will be degraded. Thus it is advisable to disable bass extension when using the FX150 for acoustic or electronic drum monitoring.

To disable bass extension: Press and hold LOW on the Aux Channel until the Channel lights flash once.

To enable bass extension: Press and hold LOW on the Aux Channel until the Channel lights flash 5 times.

To update the firmware on your FX150, download the VoiceSupport application here: <http://www.tc-helicon.com/en/products/voicesupport-2/>

Technical Specifications

Effects

- Tone
- Reverb

Control

Front panel:

- Encoder with light ring for mix controls
- Master Volume Control
- Channel 1 and 2
- Level
- Adaptive Vocal Tone on/off
- 3 band EQ
- Reverb send
- Aux Channel
- Level
- Voice Cancel
- 3 band EQ
- 9 Reverb types

Rear Panel:

- Hi-Z enable (Channel 1)
- Output select: Full mix/Channel 1 Processed
- Phantom power on/off

Size

- Height: 8.25 inches (210 mm)
- Width: 11.25 inches (286 mm)
- Depth: 7.25 inches (184 mm)

Weight

- Weight: 6.75 lbs (3 kg)

Construction

- Ridged, very low resonance high impact polystyrene
- One-click Friction Grip™ mic-stand mounting system
- Connections

Analog Inputs

- XLR/TRS Combo Jacks (channel 1 and 2)
- 1/8" Stereo Aux Input

Analog Outputs

- XLR true stage monitor pass thru (channel 2)
- XLR processed mix output

Other

- USB for software updates
- Mic Control these microphones:
TC-Helicon MP-75
Sennheiser e 835 fx

Loudspeaker

- Full Range 6.5" Tannoy 2-way coaxial ICT Driver

Amplifier

- 150W Class-D
- 150W Smart Power compensation and protection

Power

- Power supply (supplied) 42.5V, 1.5A

Safety

- EMC:
Complies with EN 55103-1 and EN 55103-2
FCC part 15, Class B, CISPR 22, Class B
- Safety:
Certified to IEC 65, EN 60065, UL6500 and
CSA IEC 65, EN 60065, UL6500 and CSA

Operating Requirements

- Operating Temperature:
32°F to 122°F (0°C to 50°C)
- Storage Temperature:
-22°F to 167°F (-30°C to 70°C)
- Humidity:
Max. 90 % non-condensing

Included with VoiceSolo FX150

- Region specific power supply
- Adaptor for stand-alone position
- User guide

Optional Accessories

- FX150 Gig Bag

Warranty

See www.tc-helicon.com/support for warranty information.

