

## WARRANTY REGISTRATION

Visit [www.ultimatesupport.com](http://www.ultimatesupport.com) for a quick and convenient process for registering your new Ultimate Support product. Warranty Registration and Proof of Purchase are required for warranty fulfillment. Full Limited Lifetime Warranty and Ultimate Protection Plus Premium Service and Support Plan details are available online under Music Gear & Instrument Stands / Customer Support.

**ULTIMATE**  
S U P P O R T ™

### LIMITED LIFETIME WARRANTY

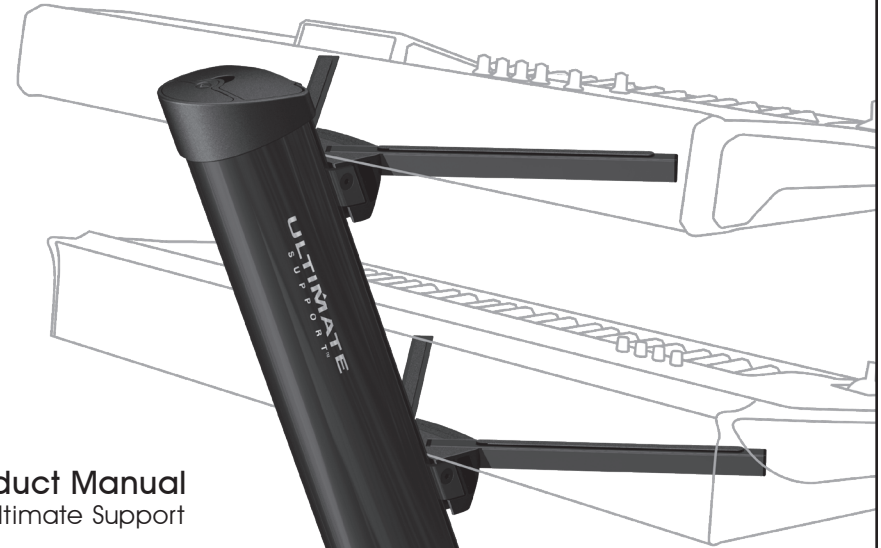
Ultimate Support products are constructed of the finest materials and designed and tested to stand up to the demanding lifestyle of the touring musician, gigging DJ, and working sound engineer. In the unlikely event that a product should fail due to manufacturing defect, Ultimate Support is pleased to repair or replace that product.

**Please see [www.ultimatesupport.com](http://www.ultimatesupport.com) for more information.**

This warranty applies to the original purchaser only and does not include damage to the product resulting from normal wear and tear, accident, misuse, improper installation or operation, or unauthorized repair or alterations.

**ULTIMATE**  
S U P P O R T ™

THE STRENGTH OF INNOVATION



Product Manual  
for Ultimate Support

**APEX**  
**SERIES**  
KEYBOARD STAND

**AX-48 PRO**  
ITEM #17351



## Congratulations on your purchase!

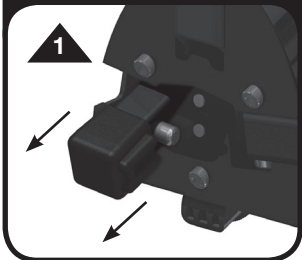
**Updated Design** – The AX-48 Pro delivers everything you loved about the original APEX stand, but now features a sleek exterior design for the modern keyboard player.

**Longer Tri-bar Arms** – In addition to one set of 13-inch Tri-bar arms, the AX-48 Pro now includes a set of 18-inch Tri-bar arms to support your larger keyboards.

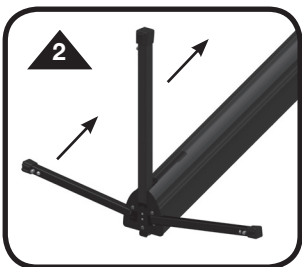
**True Portability** – Take the AX-48 Pro anywhere. The Tri-bar arms store in the column top and the legs slide into the bottom creating a self-contained, compact unit complete with a heavy-duty carrying handle.

**Stable & Durable** – Just like the original APEX, the AX-48 Pro features locking legs for proven stability and a black anodized aluminum finish that won't rust and resists scratches.

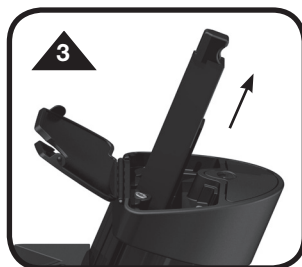
## SETUP



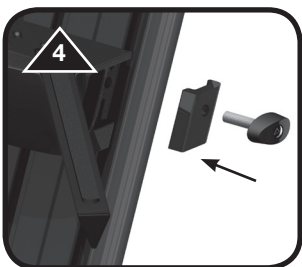
1. Lay stand on the floor. Press the buttons at the base of the column and slide legs out.



2. Rotate legs until they snap into place.

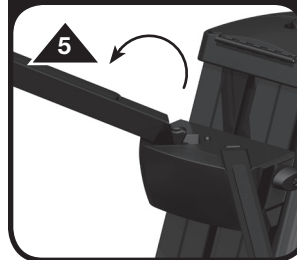


3. Open top cap to remove Tribars.

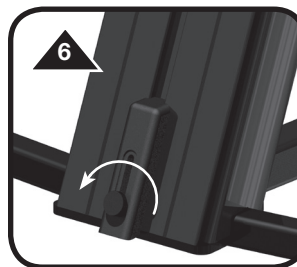


4. Position clamp on column face and install bracket and T-screw. (Angular edge rides in column slot.)

## SETUP (Continued)



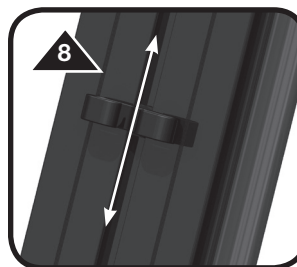
5. Attach Tribars to clamps by Tribar hook. Push Tribar down into slot.



6. Loosen thumbscrew and slide stabilizer to touch the floor. Re-tighten the thumbscrew.



7. To accommodate larger, heavier keyboard and / or lower playing styles, remove angle adapter and re-adjust stabilizer. This changes column angle and shifts center of gravity.



8. After loading top instrument first, secure cords in cable clips. Rotate cable clips. Rotate cable clips for re-positioning.