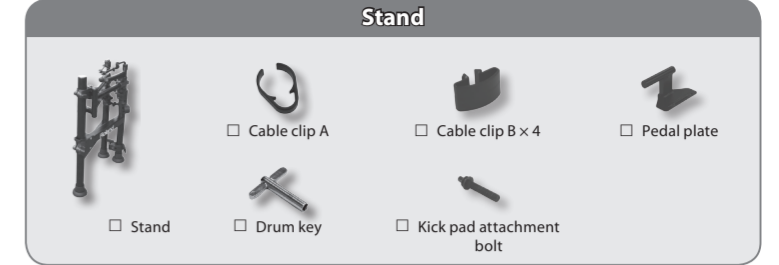
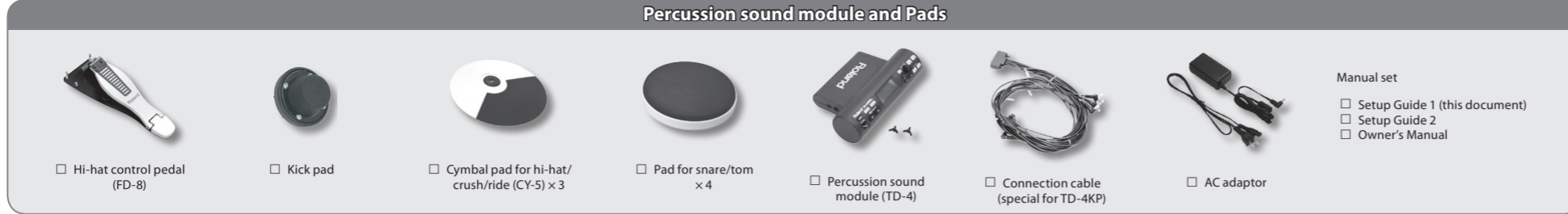


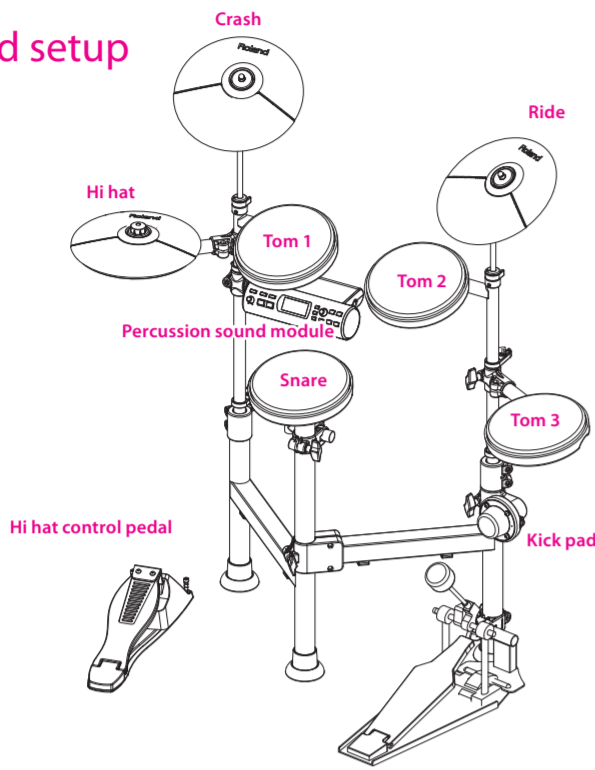


1 Check the included items

As soon as you open the package, check to see that all items are included. If anything is missing, please contact your dealer.
* Use a commercially available kick pedal.



Completed setup



* The cross stick and rim shot are not supported.

NOTE Caution during assembly

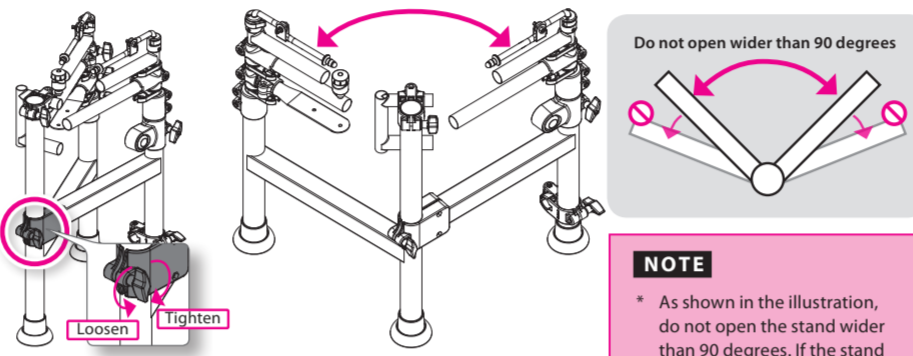
- Do not open the stand frame wider than 90 degrees in order to maintain stability.
- Position all pipes as instructed in this Setup Guide in order to maintain the proper balance of the entire kit.
- Be careful not to pinch your fingers or hands when opening, closing, adjusting, transporting or using the stand.
- Do not pull hard on any connection cables.
- Follow all procedures in this Setup Guide regarding set up or folding the stand. Pipes folded incorrectly may damage or stretch the cables.
- Handle the cymbals with care when adjusting the cymbal arms. A falling cymbal could injure you.
- Repeatedly folding and setting up the stand may cause the various bolts to loosen. Before you perform, verify that the bolts and hand knobs are not loose.
- Take care when transporting the system in the folded state. Use caution for protruding parts such as the pedal plate and hand knobs.
- The pipes and the cymbal rods will come out if they are extended too far.

2 Open the stand

NOTE

- Take care that the stand does not fall over during assembly.
- Take care not to pinch your fingers while setting up or storing the stand.

- Loosen the hand knob and open the stand.



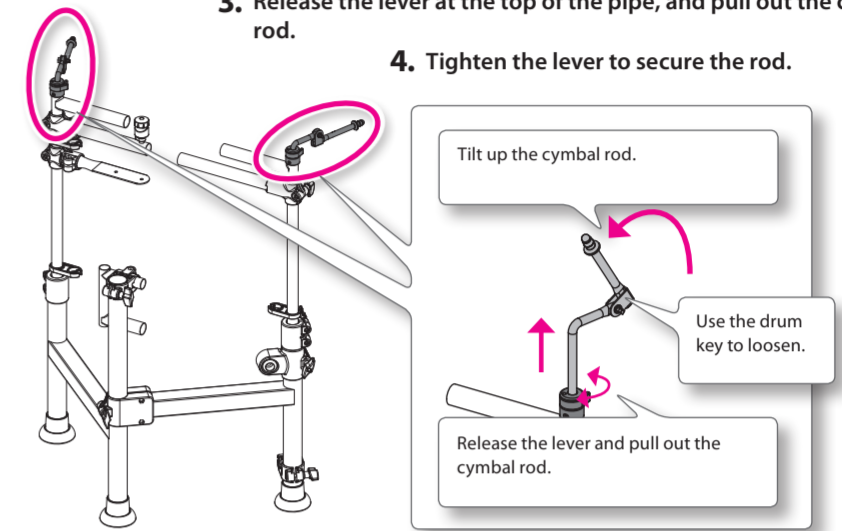
- Tighten the hand knob to secure the stand.

NOTE

- As shown in the illustration, do not open the stand wider than 90 degrees. If the stand is opened too wide, it will be less stable, and may fall over.

4 Extending the cymbal rods

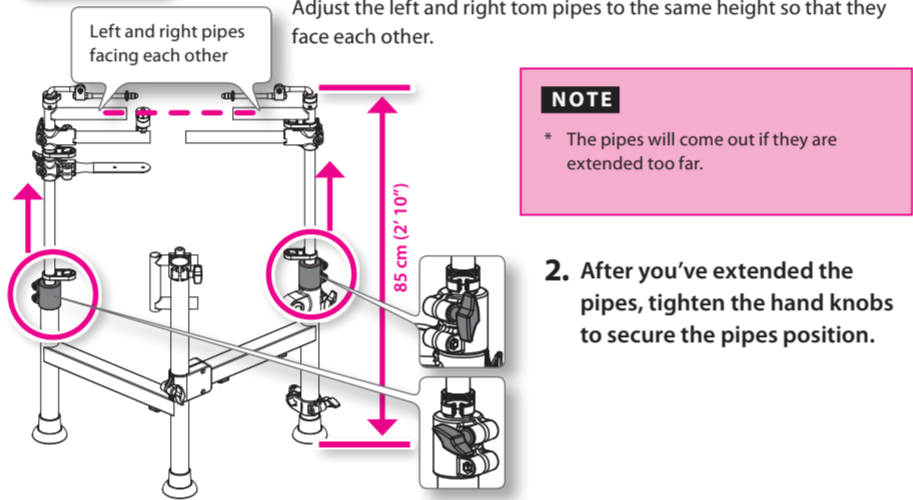
- Use the drum key to loosen the bolt of the movable section.
- Tilt up the tips of the cymbal rods (two locations).
- Release the lever at the top of the pipe, and pull out the cymbal rod.
- Tighten the lever to secure the rod.



3 Extend the pipes

- Loosen the hand knobs at the locations shown, and extend the pipes.

Adjust the pipes so that the stand is 85 cm (2' 10") high. Adjust the left and right tom pipes to the same height so that they face each other.



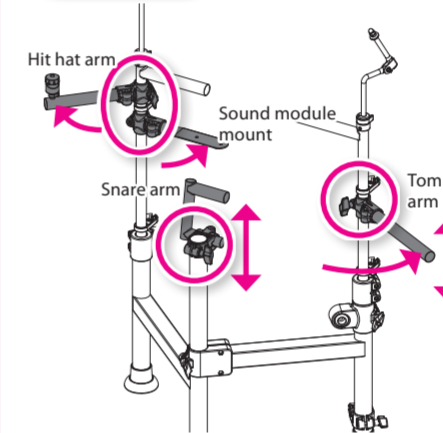
NOTE

- The pipes will come out if they are extended too far.

- After you've extended the pipes, tighten the hand knobs to secure the pipes position.

5 Pipe and Mount positioning

- Loosen the hand knobs and spread open the hit hat arm and sound module mount as shown in the illustration.
- Position the snare arm as shown in the illustration.
- Loosen the knob and position the tom arm as shown in the illustration.



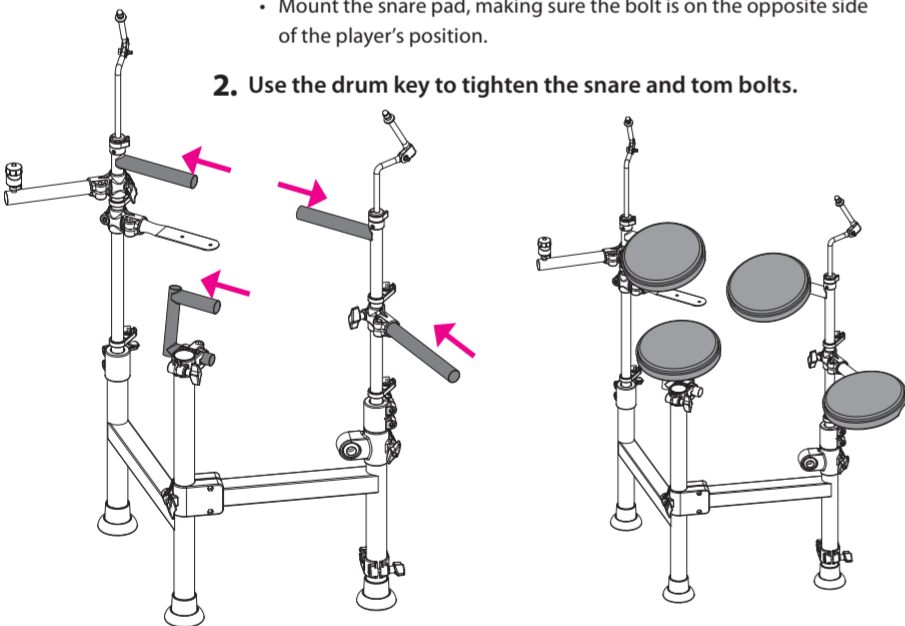
6 Attach the snare and toms

- Attach the snare and toms as shown in the illustration (four locations). Use the drum key to slightly loosen the pad bolts beforehand.

MEMO

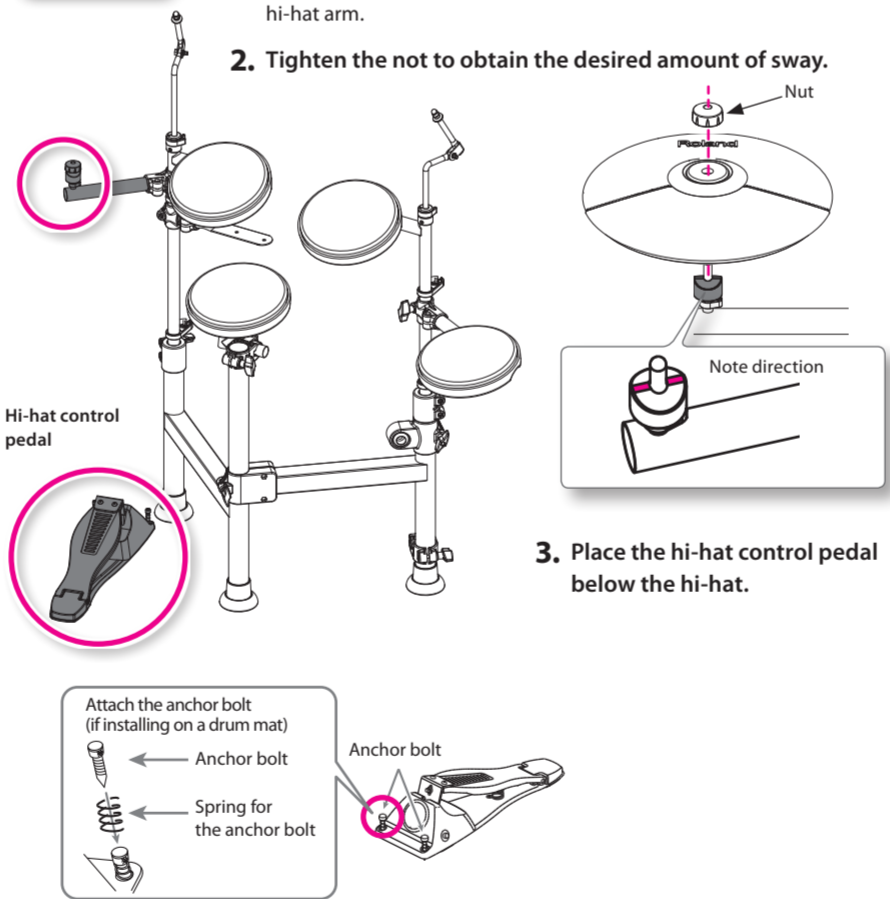
- The snare and tom pads are all the same.
- To mount tom 1 & 2, you will need to temporarily move the left or right pipe.
- Mount the snare pad, making sure the bolt is on the opposite side of the player's position.

- Use the drum key to tighten the snare and tom bolts.

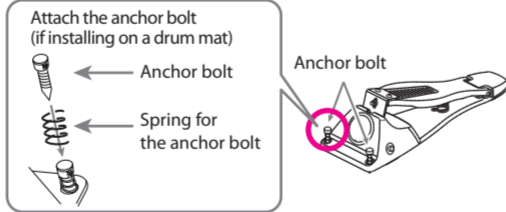


7 Attach the hi-hat

- Remove the nut and attach the hi-hat pad as shown in the illustration. Pay attention to the direction of the rubber part attached to the tip of the hi-hat arm.
- Tighten the nut to obtain the desired amount of sway.



- Place the hi-hat control pedal below the hi-hat.

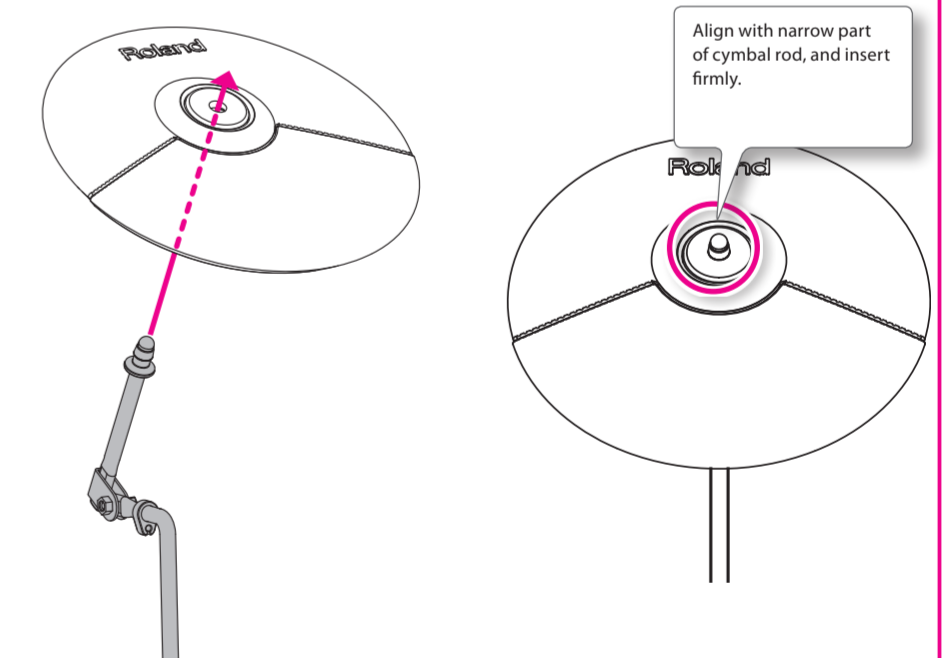


8 Attach the cymbals

- Place the cymbals onto the tip of the cymbal rods (two locations). Align the cymbal with the narrow part of the cymbal rod, and insert the rod firmly.

MEMO

Place the cymbals onto the tip of the cymbal rods, and firmly press them to secure the position, as shown in the illustration.



9 Attach the kick pad

- Rotate the kick pad and pedal plate holders as shown in the illustration.

* Use a commercially available kick pedal.

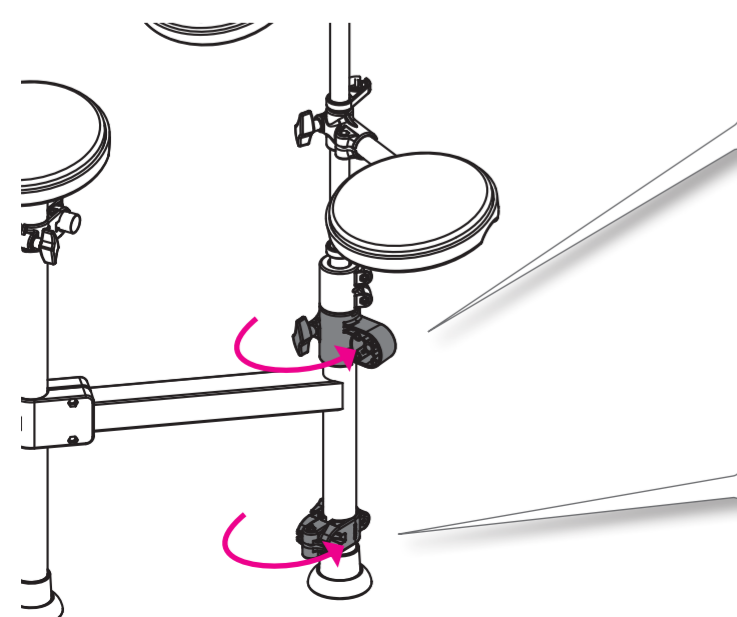
- Attach the kick pad as shown in the illustration, and firmly tighten the kick pad attachment bolt.

Kick pad attachment bolt (included with the stand)

With the OUTPUT jack facing out, use the drum key to securely tighten the bolt.

- Loosen the bolt and attach the pedal plate as shown in the illustration (do not tighten the bolt yet).

Loosen the bolt, then insert the pedal plate (don't tighten the bolt).

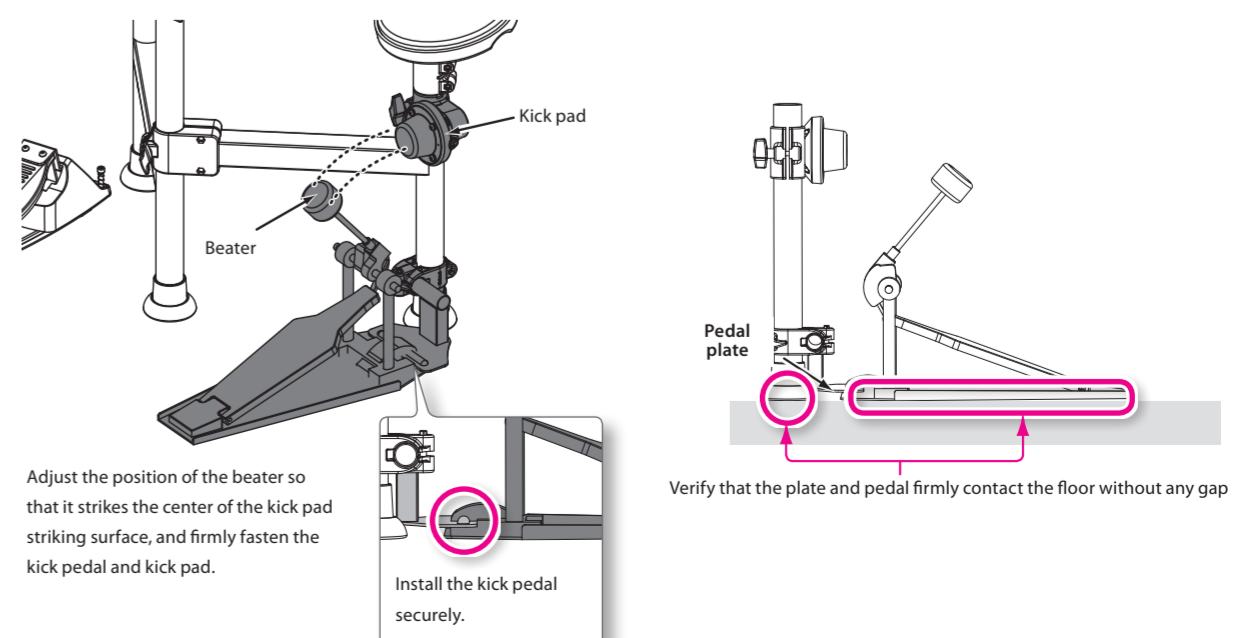


- Kick pedal positioning.

Mount the kick pedal to the pedal plate and so that the beater strikes the center of the kick pad. In order to this, you may have to loosen the knob on the kick pad to adjust the height and angle. Once the pedal is in the desired playing position, tighten the 2 knobs and bolt.

NOTE

- Take care not to pinch your fingers.



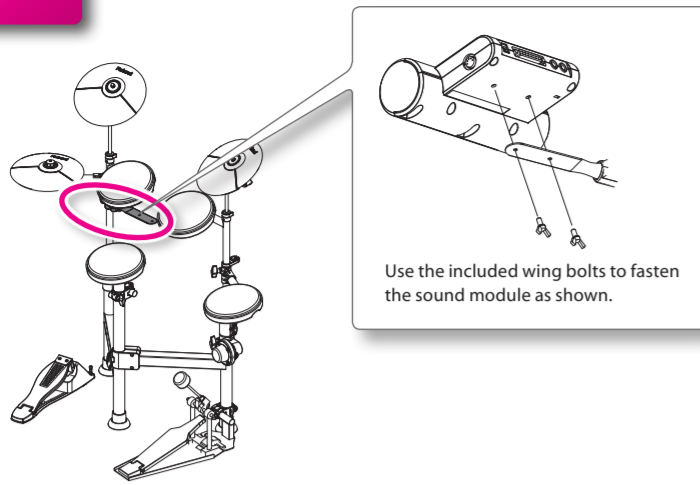
Install the kick pedal securely.

Verify that the plate and pedal firmly contact the floor without any gap

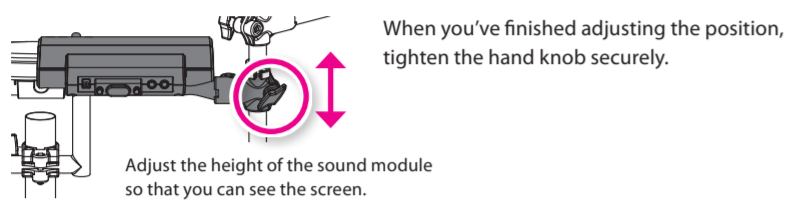
10

Attach the sound module (TD-4)

1. Attach the sound module to the pipe at the location shown in the illustration.

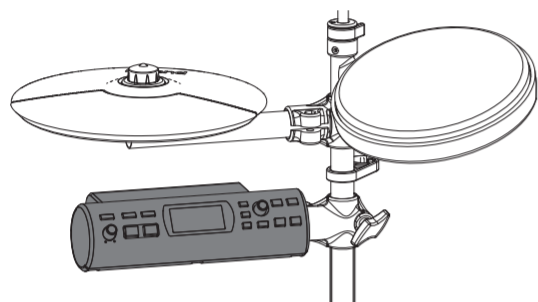


2. Adjust the height of the sound module.



MEMO

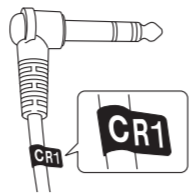
You can also attach and position the sound module below the hi-hat.



11

Connecting the cables

1. Connect the cable to the sound module as shown in the illustration. Each cable has a label indicating the pad to which it should be connected.



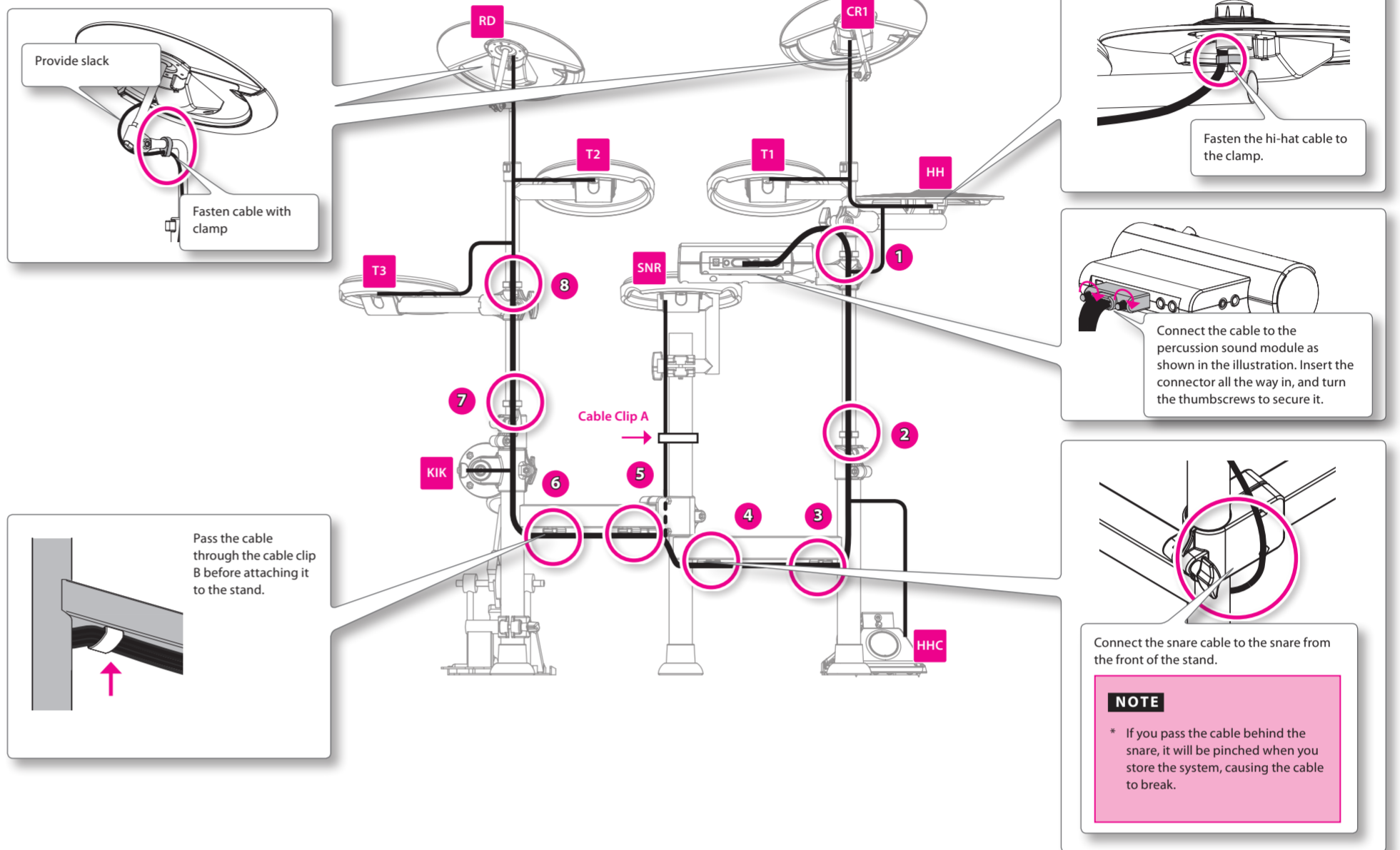
NOTE

- * Pass the cables through the cable holders one at a time.
- * Firmly insert the plugs all the way into the jacks.
- * Pass the cables through the cable holders so that they will not interfere with your playing. Pass the cables through the cable holders one at a time.

2. Connecting cables to the pads.

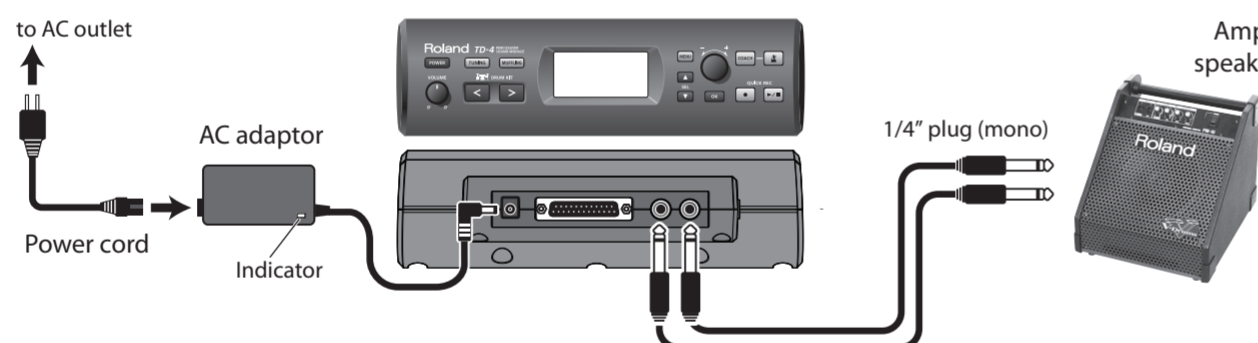
1. Locate the cables for the hi-hat (HH) tom 1 (T1) and crash 1 (CR1). Pass them through the cable holder at location 1 as shown in the illustration and connect them to the pads.
2. Pass the rest of the cables through the cable holder at location 2.
3. Locate the hi-hat controller cable (HHC) and connect to the hi-hat pedal.
4. Insert the remaining cables, into 2 of the provided cable clips B and attach the cable clips B to locations 3 & 4 on the frame as shown in the illustration.
5. Fix the snare cable (SNR) in place using the supplied cable clip A, then attach it to the pad. Locate the cable for the snare drum (SNR) and connect it to the snare pad.
6. Insert the cables, into the remaining 2 cable clips B and attach the cable clips B to locations 5 & 6 on the frame as shown in the illustration.
7. Locate the cable for the kick pad (KIK) and connect it to the kick pad.
8. Pass the rest of the cables through the cable holders at location 7 and 8.
9. Locate and connect the cables for tom 2 (T2), tom 3 (T3) and the ride cymbal (RD).
10. Locate the cymbal clamps for the ride and crash cymbals and attach the cable to them as shown in the illustration.

Seen from behind



12

Connect the AC adaptor and speakers

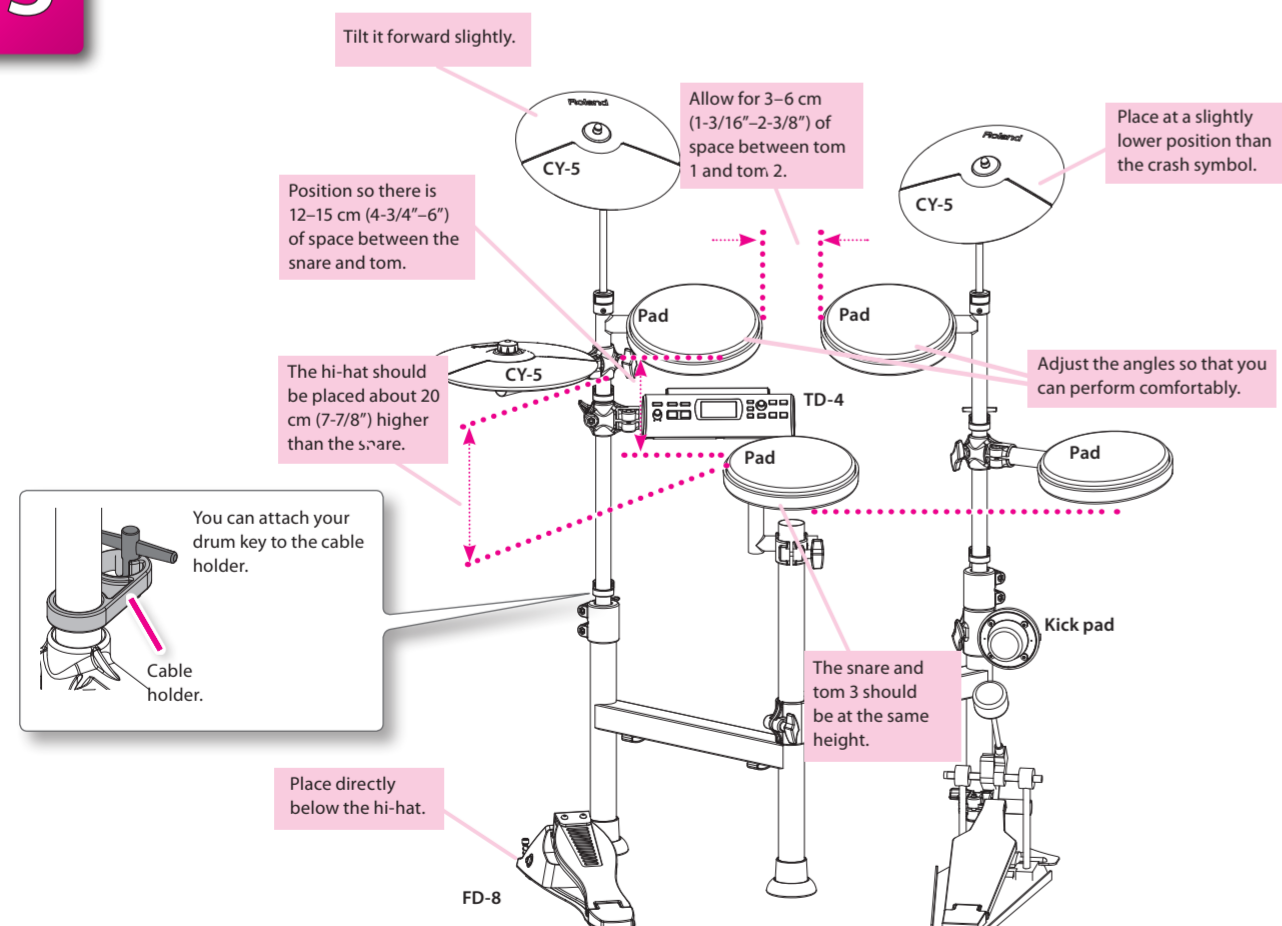


- * To prevent malfunction and/or damage to speakers or other devices, always turn down the volume, and turn off the power on all devices before making any connections.
- * Pass the cord from the AC adaptor through the cable holder, so it is held in place against the stand. This way, even if someone accidentally tugs on the cord, you won't have to worry about the plug getting pulled out, which would cause a sudden loss of power. And, you can also prevent the application of an undue amount of force to the AC adaptor's connector.
- * If you're working in mono, only use the L/MONO jack.

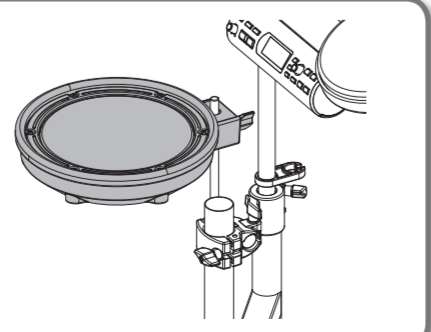


13

Final set-up adjustments



The snare can be replaced with a mesh pad (PDX-8; sold separately).
You'll need a pad mount (MDH-12; sold separately) in order to attach the mesh pad.

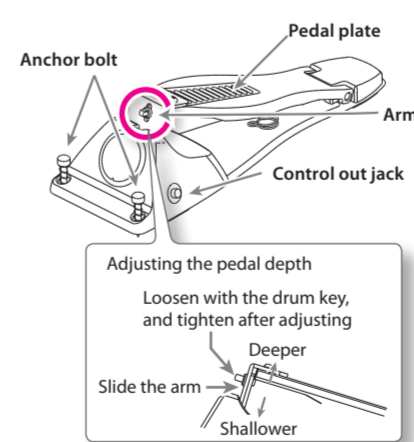


- * To prevent damage to your floor or carpet, and to ensure a stable setup, we recommend that you use a separately sold drum mat (TDM series).

Detailed explanation of each part

FD-8 (Hi-hat control pedal)

FD-8 component names

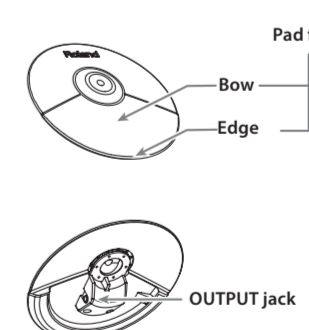


NOTE

- * The tips of the anchor bolts are sharp. Handle with care.
- * When using on hard-surfaced flooring, the anchor bolts may damage the floor. Do not attach the anchor bolts.
- * To adjust the travel of the pedal, loosen the arm bolt.

CY-5 (Crash/Ride/Hi-hat)

CY-5 component names



NOTE

- * Continuous playing may cause discoloration of the pad, but this will not affect the Pad's function.

Pad (Snare/Tom 1-3)

Pad component names



NOTE

- * Continuous playing may cause discoloration of the pad, but this will not affect the Pad's function.