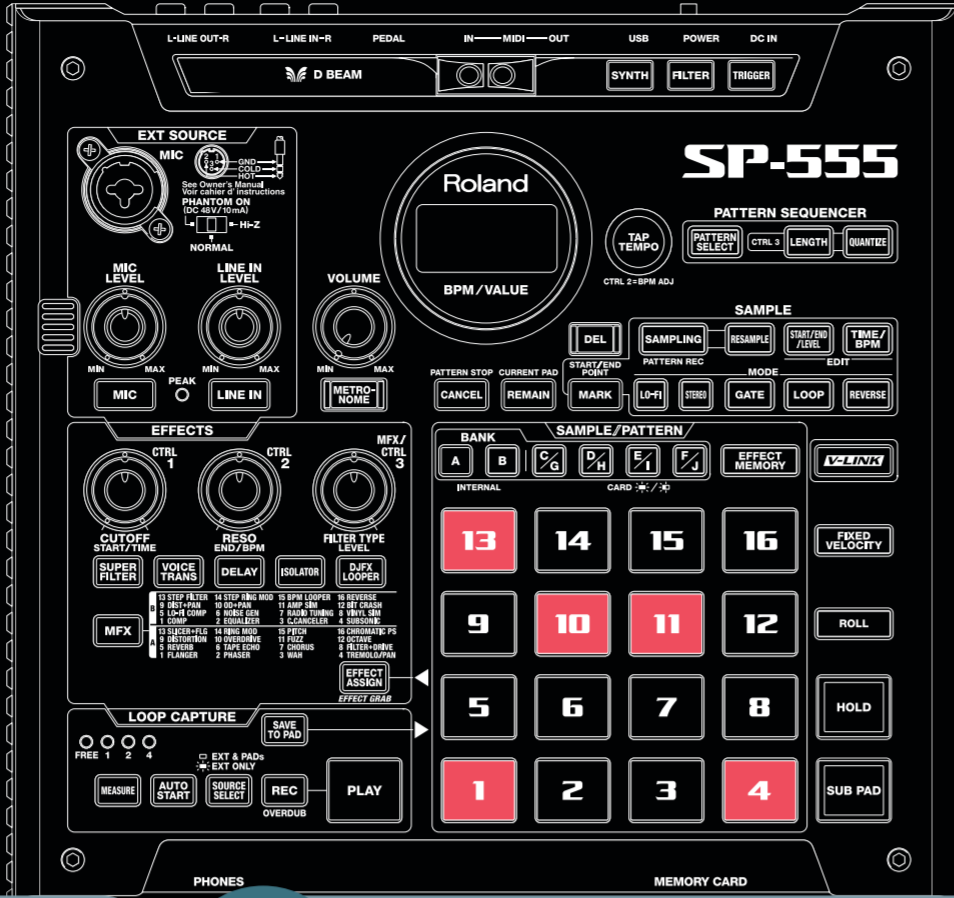


Before using this unit, carefully read the sections entitled "USING THE UNIT SAFELY" and "IMPORTANT NOTES" (Owner's Manual). These sections provide important information concerning the proper operation of the unit. Additionally, in order to feel assured that you have gained a good grasp of every feature provided by your new unit, Owner's Manual should be read in its entirety. The manual should be saved and kept on hand as a convenient reference.

# SP-555

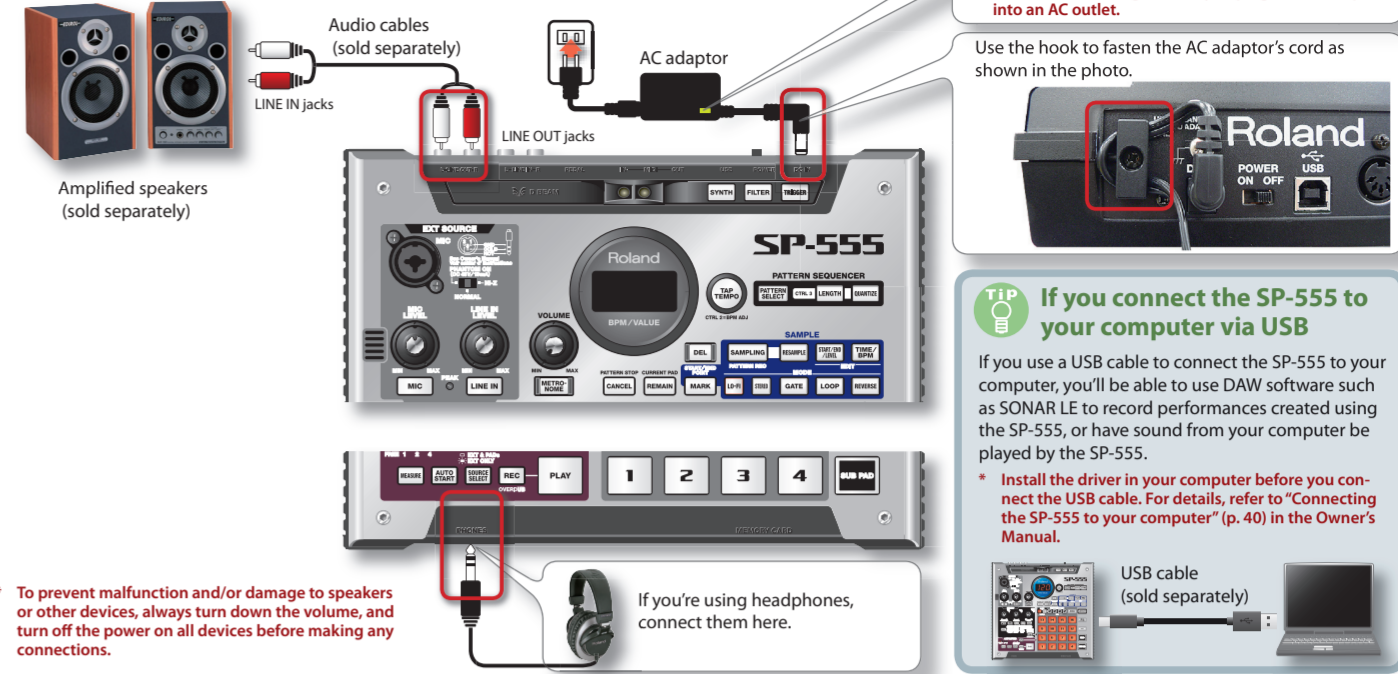
Quick Start Guide

Read this first



## 1 Connect the SP-555 to your amplified speakers

Make sure that the SP-555 and your amplified speakers (which we'll simply call "speakers") are powered off, and then make connections as shown below.



Place the AC adaptor so the side with the indicator (see illustration) faces upwards and the side with textual information faces downwards.  
 • The indicator will light when you plug the AC adaptor into an AC outlet.  
 Use the hook to fasten the AC adaptor's cord as shown in the photo.

**TIP** If you connect the SP-555 to your computer via USB  
 If you use a USB cable to connect the SP-555 to your computer, you'll be able to use DAW software such as SONAR LE to record performances created using the SP-555, or have sound from your computer be played by the SP-555.  
 • Install the driver in your computer before you connect the USB cable. For details, refer to "Connecting the SP-555 to your computer" (p. 40) in the Owner's Manual.

To prevent malfunction and/or damage to speakers or other devices, always turn down the volume, and turn off the power on all devices before making any connections.  
 If you're using headphones, connect them here.

## 2 Turn the power on

Once the connections have been completed, turn on power to your various devices in the order specified. By turning on devices in the wrong order, you risk causing malfunction and/or damage to speakers and other devices.

- 1 Minimize the volume of the SP-555 and your speakers.**  
Turn the SP-555's VOLUME knob all the way to the left.
- 2 Turn the SP-555's POWER switch ON.**  
This unit is equipped with a protection circuit. A brief interval (a few seconds) after power up is required before the unit will operate normally.
- 3 Turn on the power of your speakers.**
- 4 Adjust the volume.**  
While striking the pads of the SP-555 to produce sound, slowly turn the VOLUME knob toward the right, and adjust the volume on the SP-555 and on your speakers.

## 3 Insert and format a CompactFlash card

If you insert a commercially available CompactFlash card into the SP-555 you'll be able to sample for longer periods of time

**TIP** CompactFlash cards usable with the SP-555

The SP-555 supports CompactFlash cards (type I) ranging from 32 MB up to 2 GB in capacity.  
 • You can't use Type II cards such as Microdrives.



**TIP** Available sampling times

Using a higher-capacity CompactFlash card will let you sample for a longer period of time. The approximate sampling times available for the internal memory and the supported sizes of CompactFlash cards are shown below.

Card capacity	Recording Time		unit: minutes
	STANDARD stereo (mono)	LO-FI stereo (mono)	
Internal Memory*	5 (11)	11 (22)	
128 MB	24 (48)	48 (96)	
256 MB	48 (96)	96 (193)	
512 MB	96 (193)	193 (386)	
1 GB	193 (386)	386 (772)	
2 GB	386 (772)	772 (1544)	

\*Includes the preloaded samples

### Inserting a card

Never insert or remove a CompactFlash card while this unit's power is on. Doing so may corrupt the unit's data or the data on the CompactFlash card.

- 1 Remove the card cover from the front panel.**
- 2 Insert the card into the slot, and replace the cover.**  
Carefully insert the CompactFlash card all the way in—until it is firmly in place.

### Removing a card

- 1 Press the eject button.**
- 2 Grasp the card and pull it out toward yourself.**

### Formatting a card

Before using a card for the first time, you must format it on the SP-555. The SP-555 will fail to recognize a card that was formatted by a different device.  
 • Formatting a card will erase all data that was on the card.

- 1 While holding down [CANCEL], press [REMAIN].**  
The display will indicate "FMG" and BANK [C/G]-[F/J] will blink.
- 2 Press any one of the BANK [C/G]-[F/J] buttons.**  
[DEL] will blink. If you decide not to format the card, press [CANCEL].
- 3 Press [DEL].**  
While formatting is in progress, [DEL] will light and the dot in the display will blink. When the blinking stops, formatting is completed.  
 • Never turn off the power while the dot is blinking. Doing so may damage the card and render it unusable.  
 • Do not modify or delete the files and folders that are created when the card is formatted. Doing so will prevent the SP-555 from recognizing the card correctly.

## 4 Playing sounds

### Playing samples

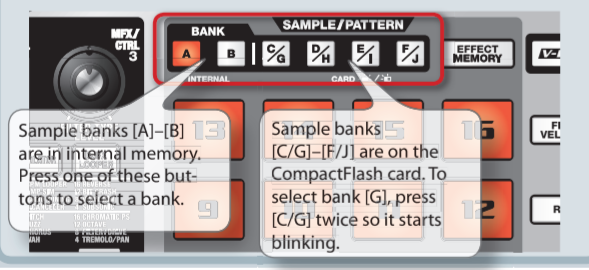
**TIP** What's a sample?

Samples are pieces of sampled (recorded) sound together with their loop settings, etc. That are assigned to the sixteen pads. You can play a sample by pressing the corresponding pad [1]-[16].



**TIP** What's a sample bank?

A sample bank is a set of sixteen samples assigned to the pads. The SP-555 has ten sample banks, A-J.



When the SP-555 is shipped from the factory, samples are assigned to pads [1]-[16] of sample bank A. Let's start by listening to these samples.

- 1 Make sure that [PATTERN SELECT] is extinguished.**  
If it is lit, press the button to turn it off.
  - 2 Press BANK [A].**
  - 3 Press a pad to play its sample.**  
 • That pad will blink while its sample is playing.  
 • Striking a pad strongly will play the sample more loudly.  
 • You can press two or more pads to play them simultaneously.
- Try playing samples using the functions described at the right.
- TIP** If the sound won't stop  
 If the sound won't stop, press [CANCEL] four times in rapid succession. All of the SP-555's sounds will stop.

**Playing the samples at the same volume**  
If you press [FIXED VELOCITY] so it's lit, the samples will play at a fixed volume regardless of how strongly you strike the pads.  
 To set the fixed playback volume, hold down [FIXED VELOCITY] and turn the CTRL 3 knob to adjust it within the 16-127 range.

**Playing a roll**  
Hold down [ROLL] and press a pad to play that sample repeatedly like a drum roll.  
 To adjust the note value (interval) of the roll, hold down [ROLL] and turn the CTRL 3 knob.  
 The speed of the roll is synchronized with the tempo (described later).

**Holding a sample**  
While holding down a pad, press [HOLD] to make the sample continue playing even after you release the pad. To stop the sample, press the pad once again.

**Repeated strikes**  
When you press [SUB PAD], the same sample as the previously pressed pad will play. This makes it easy to use both hands to play rapid notes in succession.

**TIP** Check the sample settings  
 These buttons indicate the sample settings of the pad you pressed most recently (the "current pad").

Button name	When lit	When not lit
GATE	Sample playback will stop when you release the pad	Sample playback will continue even if you release the pad
LOOP	Play back repeatedly (looped)	Play back once (not looped)
REVERSE	Play backward	Play normally

You can change the sample settings by pressing these buttons. Use the procedure described on the opposite side of this leaflet to record a sample, and then try changing the settings.  
 • At the factory settings, the bank A samples are protected and cannot be modified. For details on disabling protection, refer to the Owner's Manual (p. 51).

### Applying effects

The SP-555 contains 37 types of effects. As an example, here's how to apply the Super Filter to a sample.

- 1 Press a pad to play its sample.**
- 2 Press [SUPER FILTER].**  
Use these buttons to switch the effect. (The button's light will be off if the effect is off.) For MFX, the effect to be used is selected by holding down [MFX] and pressing bank [A] or [B] and a pad [1]-[16].
- 3 Turn the CTRL 1-3 knobs to adjust the effect.**

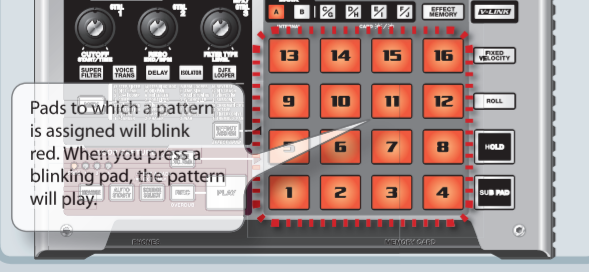
**TIP** Storing the effect settings (EFFECT MEMORY)  
 The Effect Memory function lets you store up to sixteen effect settings and switch between them instantly.

**Storing an effect setting**  
 [EFFECT MEMORY] + [SAMPLING] + pad [1]-[16] + [SAMPLING]  
**Calling up an effect setting**  
 [EFFECT MEMORY] + pad [1]-[16] to select.

### Playing patterns

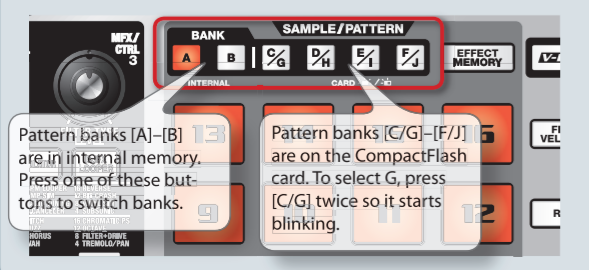
**TIP** What's a pattern?

The SP-555 lets you successively play several samples by pressing a pad, and create a song by recording this performance. Such a succession of samples is called a "pattern."



**TIP** What is a pattern bank?

A "pattern bank" is a set of sixteen patterns assigned to the pads. The SP-555 has ten pattern banks, A-J.



At the factory settings, patterns are assigned to pads [1]-[16] of pattern bank [A]. Let's start by listening to them.

- 1 Press [PATTERN SELECT] so it's lit.**  
The display will indicate "Ptn".
- 2 Press BANK [A].**
- 3 Press a pad, and the pattern will play.**  
The pad will change from blinking to lit, and the pattern will begin playing.
- 4 Press another pad to reserve the next pattern.**  
If you press another pad while a pattern is playing, the pattern to play next will be reserved, and that pad will blink. When the currently playing pattern has finished playing, the reserved pattern will play immediately.
- 5 Press [CANCEL] to stop pattern playback.**

### Using the D Beam

You can apply a variety of effects by positioning your hand above the D Beam sensor.

- 1 Press a button to select the D Beam effect.**  
The specified pad will play.  
 This is the D Beam sensor. A synth sound will play. A filter will be applied to the output sound.  
 If you press the button to turn it off, the D Beam will turn off.
- 2 Position your hand above the D Beam sensor, and slowly move it up and down.**  
 The sensitivity of the D Beam controller will change depending on the amount of light in the vicinity of the unit. If it does not function as you expect, adjust the sensitivity as appropriate for the brightness of your location. (Owner's Manual p. 38)

**TIP** D Beam settings

Hold down a D Beam button, press a pad [1]-[16] or turn a CTRL 1-3 knob to make D Beam settings.

D Beam button	Pad	CTRL knob
SYNTH	Pad 1-8: Synth sound Pad 9-16: Delay settings	CTRL 1: Key (pitch) CTRL 2: Scale (pitch interval) CTRL 3: Synth volume
FILTER	Filter type	Not used
TRIGGER	Select the pad to play	CTRL 3: Playback volume

### Adjusting the tempo

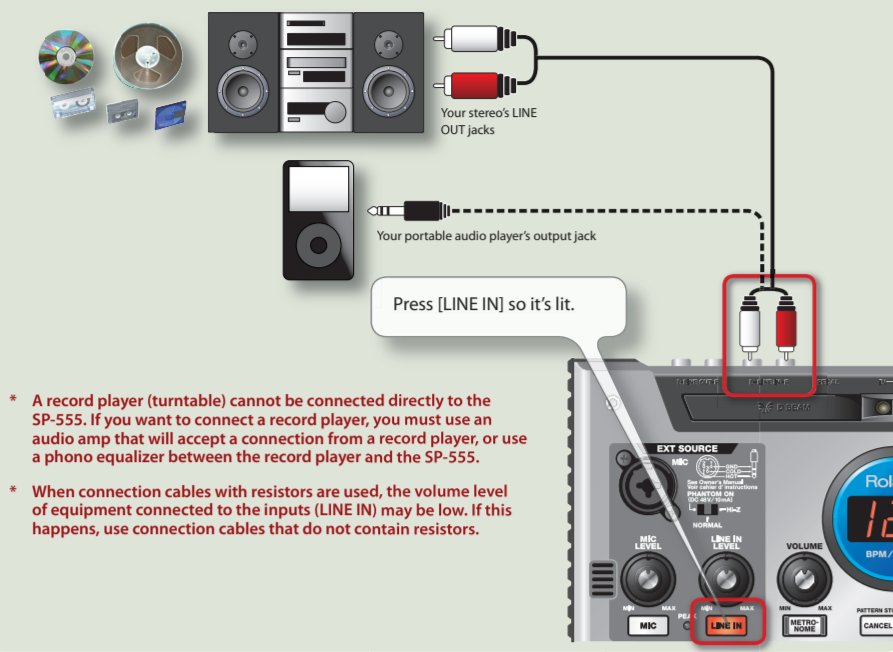
Here's how to change the playback tempo of the pattern.

- 1 Hold down [TAP TEMPO] and turn the CTRL 2 knob.**  
The display will indicate the tempo in terms of the BPM, and the pattern playback tempo will change.
- TIP** What's BPM?  
 This stands for Beats Per Minute, which is the number of quarter-note beats played in one minute.
- TIP** Matching the tempo of a CD or turntable  
 You can set the tempo by pressing [TAP TEMPO] four times or more at the desired tempo.

# 5 Connecting equipment to the SP-555 for recording

## Connecting a stereo or portable audio player

If you're connecting your stereo, CD player, or portable audio player, use audio cables to connect your device's output jacks (LINE OUT jacks, AUX OUT jacks, etc.) to the SP-555's LINE IN.



- A record player (turntable) cannot be connected directly to the SP-555. If you want to connect a record player, you must use an audio amp that will accept a connection from a record player, or use a phono equalizer between the record player and the SP-555.
- When connection cables with resistors are used, the volume level of equipment connected to the inputs (LINE IN) may be low. If this happens, use connection cables that do not contain resistors.

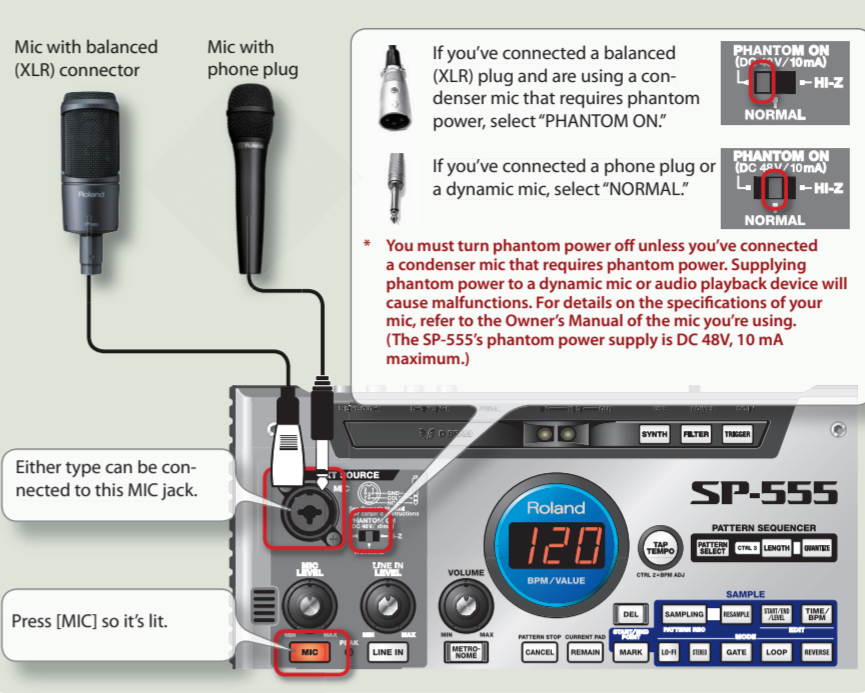
## Connecting a guitar or bass

If you're connecting a guitar or bass directly, connect it to the MIC jack.



## Connecting a mic

This instrument is equipped with balanced (XLR/TRS) type jacks. Wiring diagrams for these jacks are shown below. Make connections after first checking the wiring diagrams of other equipment you intend to connect.



## Using the SP-555's built-in mic



Don't connect anything to the MIC jack. This will cause the internal mic to be selected. Press [MIC] so it's lit. Set to "NORMAL".

# 6 Recording

## Two ways to record

The SP-555 gives you two ways to record. Use the method that's best for your situation.

### Loop Capture

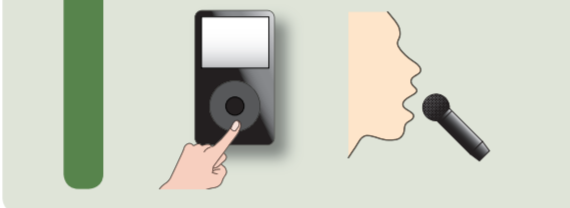
This is a new method of recording featured on the SP-555. It's a convenient way to record a loop phrase of one to four measures from a CD or portable audio player. You can also use overdubbing to continue layering your performance on the pads. Loop Capture lets you record up to a maximum of approximately 15 seconds of sound. (If you need to record longer than 15 seconds, use the "Sampling" method.)

### Sampling

This is the conventional recording method in which you record directly to a pad.

## 1 Adjust the recording level

1 Produce sound on the device that's connected to the SP-555 (if you're using a mic, vocalize into the mic).



## 2 Adjust the SP-555's knob so that the PEAK indicator barely lights when the loudest sounds occur.

Adjust the MIC LEVEL knob if your device is connected to the MIC jack, or adjust the LINE IN LEVEL knob if your device is connected to the LINE IN jack.



## TIP Adjust the level with care!

If the recording level is too low, the sound will be lacking in dynamic range and the audio quality will be poor. If the recording level is too high, the recorded sound will be distorted (crackly). Adjust the recording level with care.

## TIP Applying effects to the input sound

[EFFECT ASSIGN] can be used to apply effects to the mic or line input as well.



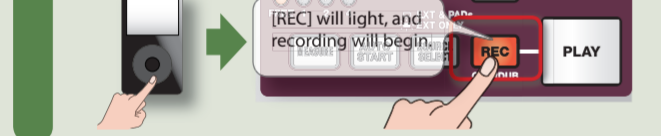
## 2 Using Loop Capture

1 Press [MEASURE] enough times to get "FREE" to light.



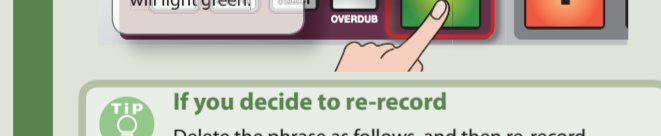
**TIP** If you know the tempo: If you know the tempo of the phrase you'll be recording, you can specify the tempo and the number of measures. 1. Set the tempo as described in "Adjusting the tempo" on the other side of this leaflet. 2. Press [MEASURE] enough times to get the desired number of measures to light (1, 2, or 4).

2 Produce sound on the device that's connected to the SP-555, and press [REC] when you want to start recording.



3 When you want to stop recording, press [PLAY]. Recording will stop, and the recorded phrase will immediately play as a loop.

4 Press [PLAY] to stop the loop playback.



**TIP** If you decide to re-record: Delete the phrase as follows, and then re-record. Hold down [EFFECT ASSIGN] and press [REC]; the recorded phrase will be deleted and the [PLAY] button will go out.

Here we'll explain how to use Loop Capture to record a phrase and save it to pad 14 of bank B (or bank C-F if you're using a card).

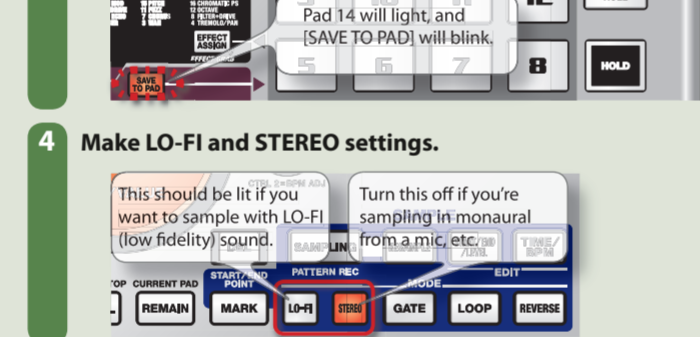
### Saving the phrase to a pad

1 Press [SAVE TO PAD]. The button will light.

2 Press BANK [B] so the button is lit.

3 Press pad [14]. Pad 14 will light, and [SAVE TO PAD] will blink.

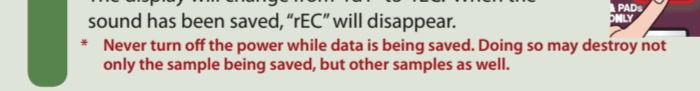
4 Make LO-FI and STEREO settings.



5 Press [PLAY] to begin loop playback.

6 Use the CTRL 3 knob to adjust the level.

7 Press [SAVE TO PAD] to save the sound.



## 2 Sampling

Here we'll explain how to use Sampling to record to pad 13 of bank B (bank C-F if you want to sample to the card).

1 Make sure that [PATTERN SELECT] is extinguished.

2 Press [SAMPLING] so the button is lit.

3 Press BANK [B] so the button is lit.

4 Press pad [13]. Pad 13 will light, and [SAMPLING] will blink.

5 Make LO-FI and STEREO settings.

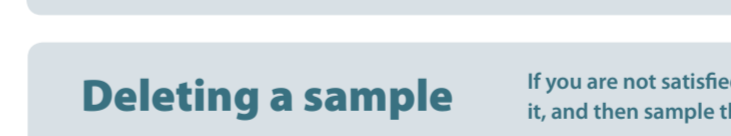


6 Produce sound on the device that's connected to the SP-555, and press [SAMPLING] when you want to start sampling.

7 When you want to stop sampling, press the [SAMPLING].

**TIP** If the display indicates "FuL": If the available sampling time is exceeded, the display will indicate "FuL," and sampling will end automatically.

8 Press pad 13 to play back the sound you just sampled.



**TIP** Never turn off the power while sampling is in progress. If you turn off the power, not only the sample being recorded but also other samples may also be destroyed.

**TIP** If there is unwanted sound or silence at the beginning or end of the sample, you can make settings so that only the desired portion will be heard.

**TIP** For details, refer to "Adjusting the playback region of a sample" (p. 28) in the Owner's Manual.

**TIP** If you want to re-record the sample: Delete the sample as described below in "Deleting a sample," and then sample again.

**TIP** For more about sampling, refer to "Sampling (recording)" (p. 21) in the Owner's Manual.

## 3 Overdubbing

1 Make sure that [SOURCE SELECT] is extinguished.

2 Press [PLAY], and the sound you recorded above will play as a loop.

3 Select BANK [A], and strike pads [9] and [10] along with the rhythm.

4 Press [REC] to begin recording (overdubbing).

5 Strike pads [9] and [10] in rhythm with the sound.

6 To stop recording, press [REC] once again.

**TIP** In addition to overdubbing using the pads, you can also overdub using an external input source (bass or guitar) or vocal percussion from a mic.

Here we're going to overdub your performance using the pads onto the phrase you recorded using Loop Capture.

1 Press [SOURCE SELECT]. If this is extinguished, the sound of the pads will also be recorded in addition to the external input sound.

2 Press [PLAY], and the sound you recorded above will play as a loop.

3 Select BANK [A], and strike pads [9] and [10] along with the rhythm.

4 Press [REC] to begin recording (overdubbing).

5 Strike pads [9] and [10] in rhythm with the sound.

6 To stop recording, press [REC] once again.

**TIP** In addition to overdubbing using the pads, you can also overdub using an external input source (bass or guitar) or vocal percussion from a mic.

## Deleting a sample

If you are not satisfied with the sound you sampled, use the following procedure to delete it, and then sample the sound again.

1 Press [DEL]. The display will indicate "DEL," and the pads that can be deleted will blink.

2 Press the pad that you want to delete.

3 Press [DEL] to delete the sample.

**TIP** Never turn off the power before the deletion is complete.

**TIP** You can also delete loop capture phrases.

# 7 Importing wave data from your computer (Using the included "SP-555 Wave Converter" software)

By using the included "SP-555 Wave Converter" software, you can import WAVE format (Windows) or AIF format files from your computer into the SP-555. This is a convenient way to import material from commercially available sample CD-ROM collections into the SP-555.



## 1 Installing Wave Converter.

**Windows users:** Navigate to the Wave Converter folder on the SP-555 UTILITY CD-ROM and double-click Setup.exe.  
**Mac OS X users:** Navigate to the Wave Converter folder on the SP-555 UTILITY CD-ROM and double-click SP-555 Wave Converter Installer.pkg.

## 2 Connect your card reader to your computer, and insert a CompactFlash card.

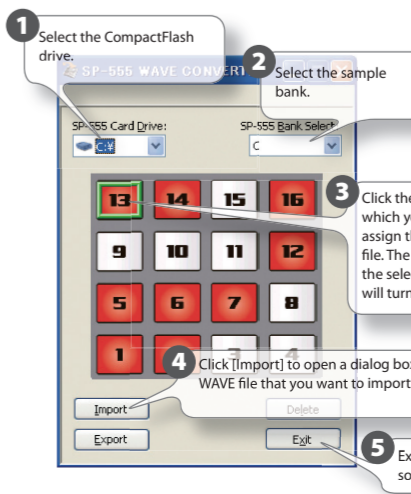
You must first format the CompactFlash card on the SP-555.

## 3 Start up Wave Converter.

**Windows users:** Start > All Programs > SP-555 Wave Converter  
**Mac OS X users:** Finder > Applications > Roland > SP-555 Wave Converter

## 4 Use Wave Converter to load WAVE files.

Using the procedure described at the right, assign WAVE files (or AIF files) to the pads of the SP-555. When you're finished, click [Exit] to exit the software.



## 5 Insert the CompactFlash card into the SP-555, and switch on its power.

You'll be able to play the imported WAVE files on the SP-555.

**TIP** For more about using SP-555 Wave Converter, refer to the online help. The online help is a PDF file. You'll need Adobe Reader (available free of charge) in order to read it.

**TIP** If you want to import audio files from a CompactFlash card without using the included "SP-555 Wave Converter" software, refer to "Importing audio files" (p. 46) in the owner's manual.

Microsoft and Windows are registered trademarks of Microsoft Corporation. Windows is known officially as: "Microsoft® Windows" operating system. Mac OS is a trademark of Apple Computer, Inc. All product names mentioned in this document are trademarks or registered trademarks of their respective owners.