

SP-555 Wave Converter Manual

* The files in this folder and their content may not be modified, duplicated, distributed, or reproduced without the permission of Roland Corporation. The contents of these files may change without notice for improvement of the program.

1. Introduction

SP-555 Wave Converter is an application that allows bi-directional conversion between the samples in a memory card formatted for the SP-555 and WAV/AIFF format files.



Only the audio data is converted; sample parameters such as start/end points and playback mode are not converted.

2. Prepare your card reader and memory card

Before you use this software, prepare your card reader for use with your computer.



For details on connecting your card reader to your computer, refer to the owner's manual of your card reader or the owner's manual of your computer.

This software can only use memory cards that were formatted by the SP-555 itself. If the memory card is being used by Windows or Mac, you'll need to format it on the SP-555 itself.

3. Procedure

3-1. Start up the application

1

Windows:

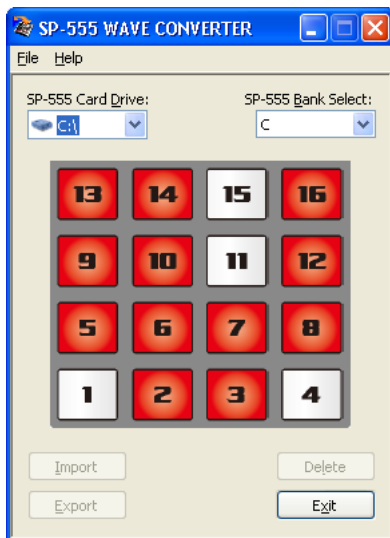
From the **Start** menu, choose "SP-555 Wave Converter."

Mac:

Double-click the "SP-555 Wave Converter" icon.

2

The application will start up.



3-2. Select the card drive

1

From the [SP-555 Card Drive:] popup menu, select the drive.

2

If the selected drive contains a memory card that is in SP-555 format, the contents of its sample bank C will appear on the pads in the screen.

3-3. Select the sample bank

1 From the [SP-555 Bank Select:] popup menu, select the sample bank.

2 The contents of the selected sample bank will appear on the pads in the screen.

HINT

The sample bank is indicated by a letter from **C through J**.

3-4. Play the pads

MEMO

Pads to which a sample is registered are shown in **red**, and unregistered pads are shown in **white**.

1 If you **double-click** a pad to which a sample is registered, that sample will play, allowing you to audition the content of that pad.

2 To stop playing the sample, **click** the currently playing pad.

NOTE

Depending on your computer's performance, you may experience the following problems.

- Sample does not play correctly.
- Playing sounds are interrupted.

3-5. Importing a WAV/AIFF format file

- 1 Click the pad to which you want to import the WAV/AIFF format file.
The border of the selected pad will turn **green**.

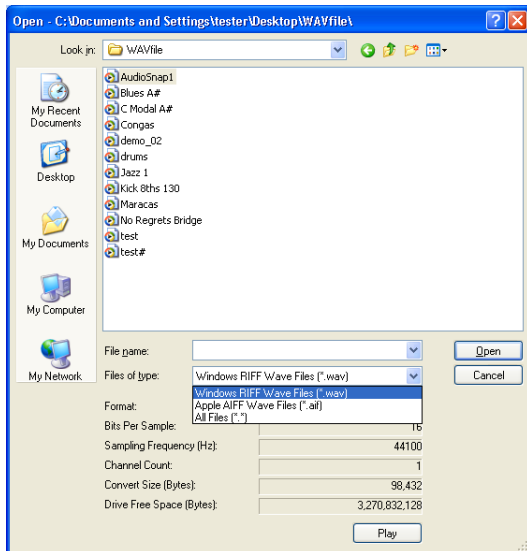
HINT

You can also select a pad to which a sample is already registered.

In this case, the new sample will overwrite existing data, so the previous sample will be erased.

- 2 Click the **[Import]** button.
The load file dialog box will appear.

- 3 Select the source folder from which you want to load the file.



- 4 Select the file that you want to convert into an SP-555 sample.

MEMO

At this time you can also audition the file that will be loaded.

1. Click the **[Play]** button.
When you do so, the **[Play]** button will change to the **[Stop]** button.
2. The selected file will play.
* To stop playback, click the **[Stop]** button.
3. When you stop playback, the **[Stop]** button will automatically change back to the **[Play]** button.

- 5 Click the **[Open]** button.

The selected file will be converted into SP-555 format, and registered to the pad you specified.

If you decide not to convert the file, click **[Cancel]**.

MEMO

The time required for loading and converting the file will depend on the size of the original file.

3-6. Exporting an SP-555 sample

Here's how to convert an SP-555 sample into WAV or AIFF format.

- 1** Click the pad that you want to convert into WAV/AIFF format.
The border of the selected pad will turn **green**.
- 2** Click the **[Export]** button.
The file save dialog box will appear.
- 3** Select the folder in which you want to save the file.
- 4** In **[File name:]** (on the Mac version, **[Save As:]**), specify the name of the file that you want to save.
- 5** In **[Files of type:]** (on the Mac version, **[Format:]**), select the conversion type (WAV/AIFF).
- 6** Click **[Save]** to save the file.
If you decide not to convert the sample, click **[Cancel]**.

MEMO

The time required for converting and saving the file will depend on the size of the original sample.

3-7. Deleting a sample

You can delete a sample that is registered to a pad.

- 1** Click the pad whose sample you want to delete.
The border of the selected pad will turn **green**.
- 2** Click the **[Delete]** button.
- 3** The sample registered to a pad will be deleted, and the pad will turn **white**.

3-8. Exiting the application

1

Windows:

From the **File** menu, choose "Exit."

Mac:

From the **SP-555 Wave Converter** menu, choose "Quit SP-555 Wave Converter."

HINT

You can also use the **[Exit]** button to exit.

2

The application will close.