

Roland®

Fantom Power for the Masses

Fantom Xa



Fantom Xa

Fantom Power for the Masses



*D Beam light has been colored for illustrative purposes only. Actual infrared light beam is invisible.

Roland's Fantom-X series has redefined the cutting edge of sample-based workstation technology. If you crave Fantom power, but want a more cost-effective way to Fantomize your rig, Roland has the perfect synth for you. Meet the Fantom-Xa — a multifaceted sampling workstation with an affordable price tag!

FANTOM-X ADVANTAGE



Fantom Xa

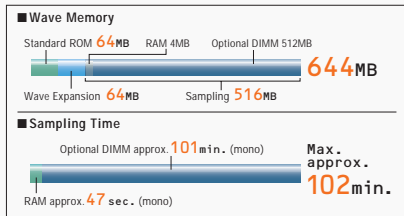


Flagship Features

Many of the attributes that make the flagship Fantom-X series so popular have been ported to the Fantom-Xa. Check out these mouth-watering specs: 128-voice polyphony, up to 644MB expandability, Skip Back Sampling, high-resolution built-in sequencer, realtime audio time-stretching, COSM® modeling effects, mastering processor, USB port, WAV/AIF compatibility, and an SRX expansion slot. The Fantom-X's sequencer has the largest capacity in the industry, and the Fantom-Xa is no different. It's always waiting for you to start recording — just press the Record button from any mode and you're off.



SRX-Series
WAVE EXPANSION BOARDS



Deep Synthesis

Under the Fantom-Xa's hood is one of the most powerful synth engines on the market. It's loaded with great raw waveforms, semi-modular structures, multiple filter types, and up to eight syncable LFOs per patch, including the Fantom's user-programmable Step LFO, which you'll find highlighted in the Pulsating and Beats&Groove categories. Use the onboard rhythms to launch a breakbeat from the pads, then press the Category Lock button to surf through dozens of perfectly



SAMPLE EDIT screen



SONG EDIT screen



The Fantom-Xa's 240 x 64 backlit LCD provides friendly, icon-based communication.

sync'd rhythms for instant dance-floor inspiration. Enable the Xa's arpeggiator (choose from over 100 programmable patterns) and warp it with the twist of a knob.

Stellar Sound Bank

The foundation of any workstation is its sounds. They should inspire you to play, create, and write music, and keep you coming back for more. Like its big brothers, the Fantom-Xa shines with great patches, covering all the traditional keyboard and orchestral categories, plus banks of modern electronic textures and beyond. Over 1,000 patches are categorized by family (Electric Guitars, Soft Pads, Organs, etc.) so it's easy to find your sound quickly.

Skip Back Sampling

The Fantom-Xa is equipped with a powerful and innovative feature found in the Fantom-X series: Skip Back Sampling. It's an ultra-cool sound design tool, and is also handy for "rescuing" magical moments that you would have otherwise lost. If you play a great lick, for example, and wish that you could hear it back (and even retain it as a sample), simply hit the Skip Back button and there it is! Skip Back can also be used for handy recording of external guitar or vocals in time with the internal sequence, or as a productive way of quickly resampling your realtime performance with knob and controller tweaks.

Seamless Audio/MIDI Integration

Whether you're sequencing MIDI tracks, triggering samples, or even recording audio directly to RAM, the Fantom-Xa makes combining these elements a simple



Instantly select sequencer tracks and synth layers with the push of a button.



The Fantom-Xa's Pad bank can trigger sounds and phrases, and can also double as a numeric keypad.

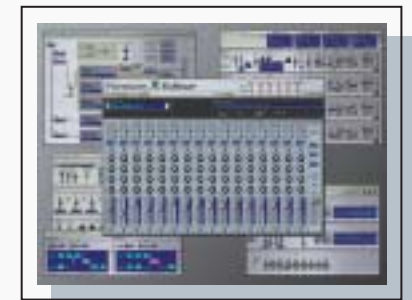
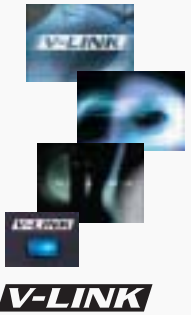
process. Lay down a drum track by combining the internal drum sounds with audio loops, which can automatically sync to tempo via realtime time-stretching. Then record some keyboard parts via MIDI and finish your song by tracking a guitar or vocal as audio. The high-resolution sequencer holds up to 400,000 events, and supports Standard MIDI Files.

World-Class Effects

The Fantom-Xa is loaded with studio-quality COSM effects. There are three MFX processors onboard, plus dedicated reverb, chorus, and even a mastering processor with multiband compression. Export your polished, finalized mixes to a PC or Mac via USB for CD burning.

Connectivity and More

There's no shortage of I/O on the Fantom-Xa. Take advantage of four audio outputs, a headphone out, a pair audio inputs, MIDI in, out, and thru, a Hold pedal input (half-pedal recognition), Control pedal input (assignable), and a USB port that supports file transfer and acts as MIDI interface. One handy USB cable connected from Fantom to computer is all you need. The onboard PC Card slot allows up to a gigabyte (!) of patch and sample data storage. You'll also get Roland's famous D-Beam controller and V-LINK output.



The Fantom-X editor for Mac and PC allows full-scale computer control via simple USB connection. A free copy is supplied with every Fantom-Xa.

Rear Panel



Specifications

Keyboard	61 keys (with velocity)	Maximum Sampling Time	mono: 47 sec. approx.; stereo: 23.5 sec. approx. *When sampling memory isn't expanded (4 MB) mono: 102 min. approx.; stereo: 51 min. approx. *When sampling memory is expanded with DIMM (516 MB)	Chord Memory	Preset: 64; User: 64
Sound Generator Section		Number of Samples	User memory: 2,000 (maximum total approximately 4 MB); Card memory: 7,000 (PC card)	Display	Graphic 240 x 64 dots backlit LCD
Maximum Polyphony	128 voices (shared with the sampling section)	Sequencer Section		Pad Buttons	10 pads (Trigger/Category Selection/Numeric Keys)
Parts	16 parts	Tracks	Phrase tracks (16 MIDI channels per track): 16; Tempo track: 1; Beat track: 1; Pattern: 100	Controllers	Pitch Bend/Modulation Lever, Control Knob x 4, Assignable Switch x 2, D Beam Controller
Wave Memory	64 MB (16-bit linear equivalent)	Resolution	480 TPQN	Connectors	Headphones Jack, A (MIX) Output Jacks (L/MONO, R): 1/4-inch phone type, B Output Jacks (L, R): 1/4-inch phone type, Input Jacks (L/MONO/MIC, R): 1/4-inch phone type, Hold Pedal Jack (Half Pedal recognition), Control Pedal Jack (assignable), MIDI Connectors (IN, OUT, THRU), USB Connector (supports file transfer and MIDI), AC Adaptor Jack
Waveforms	1,228	Tempo	5 - 300	Expansion Slots	SRX expansion boards: 1 slot DIMM: 1 slot (supports 128 MB, 256 MB, 512 MB (3.3 V)) PC Card: 1 slot (supports SmartMedia and CompactFlash using a PC card adaptor)
Preset Memory	Patches: 768 + 256 (GM2); Rhythm Sets: 36 + 9 (GM2); Performances: 64	Note Capacity	approx. 400,000 notes	Power Supply	DC 9 V (AC Adaptor)
User Memory	Patches: 256; Rhythm Sets: 32; Performances: 64	Song Length	9,998 measures	Current draw	1,200 mA
Card Memory (PC card)	Patches: 256; Rhythm Sets: 32; Performances: 64	Recording Method	RealTime recording, Step recording	Dimensions	1,065 (W) x 358 (D) x 114 (H) mm, 41-15/16 (W) x 14-1/8 (D) x 4-1/2 (H) inches
Effects	Multi-Effects: 3 systems, 78 types; Chorus: 3 types; Reverb: 5 types; Input Effects: 6 types; Mastering Effects: 3-band compressor	Others		Weight	10.9 kg / 24 lbs. 1 oz. (excl. AC Adaptor)
Sampling Section		Arpeggiator	Preset: 128; User: 128	Accessories	Owner's Manual, CD-ROM (Editor, USB MIDI driver), PC Card Protector, AC Adaptor (PSB-1U)
Data Format	16-bit linear (File Type: .WAV/.AIFF)	Rhythm Pattern	Preset: 256 (32 groups); User: 256 (32 groups)		
Sampling Frequency	44.1 kHz (fixed)				

Fantom-X Editor Software System Requirements

Windows	Operating System : Microsoft® Windows® XP, Microsoft Windows 2000 Professional, Microsoft Windows Me, Microsoft Windows 98 CPU/Clock : Pentium® / Celeron™ processor 400 MHz or higher, Pentium III 500 MHz or higher (recommended) Memory (RAM) : 128 MB or more, 256 MB or more (recommended) Hard Disk : 120 MB or more Display/Colors : 800 x 600 or higher / 65,536 colors (16 bits High Color) or more, 1,024 x 768 or higher (recommended)	Macintosh	Operating System : Mac OS (Classic) 8.6 or higher, Mac OS (X) 10.2 or higher CPU/Clock : PowerPC G3 / 233 MHz or higher (Classic), PowerPC G3 / 500 MHz or higher (OS X) Memory (RAM) : 128 MB or more, 256 MB or more (recommended) Hard Disk : 120 MB or more Display/Colors : 800 x 600 or higher / 32,000 colors or more, 1,024 x 768 or higher (recommended) Other : OMS 2.0 or higher required (Classic)
----------------	--	------------------	--

Although Roland has tested numerous configurations, and has determined that on average, a computer system similar to that described above will permit normal operation of Fantom-X Editor software, Roland cannot guarantee that a given computer can be used satisfactorily with this software based solely on the fact that it meets the above requirements. This is because there are too many other variables that may influence the processing environment, including differences in motherboard design and the particular combination of other devices involved. If you are using the system together with other software, the system requirements may exceed those listed above.

Options

SRX-Series WAVE EXPANSION BOARDS

SRX-01 Dynamic Drum Kits 	SRX-02 Concert Piano 	SRX-03 Studio SRX 	SRX-04 Symphonique Strings 	SRX-05 Supreme Dance 	SRX-06 Complete Orchestra 	SRX-07 Ultimate Keys 	SRX-08 Platinum Trax 	SRX-09 World Collection 	SRX-10 Big Brass Ensemble 	KS-12 Keyboard Stand 	DP-2 Pedal Switch 	DP-8 Damper Pedal 	FS-5U Foot Switch 	EV-5 Expression Pedal
--	------------------------------------	---------------------------------	--	------------------------------------	---	------------------------------------	------------------------------------	---------------------------------------	---	------------------------------------	---------------------------------	---------------------------------	---------------------------------	-------------------------------------



Once a musical instrument generates sound vibrations, it reaches the human ear through various mediating objects, each of which significantly affects the sound. The material and configuration of the instrument, the electric/electronic/magnetic amplifying system, the air and the reverberation of the room all affect the final sound. Sound modeling, the latest DSP technology, "virtually" reconstructs these objects. Roland's breakthrough Composite Object Sound Modeling (COSM) uses the advantages of multiple modeling methods and succeeds at accurately emulating existing sounds, as well as producing sounds that have never before been created.



Roland Corporation U.S.

5100 S. Eastern Avenue, P.O.Box 910921, Los Angeles, CA90091-0921
Phone: (323) 890-3700 Fax: (323) 890-3701
Visit us online at www.RolandUS.com

All specifications and appearances are subject to change without notice.
All trademarks are the property of their respective companies.