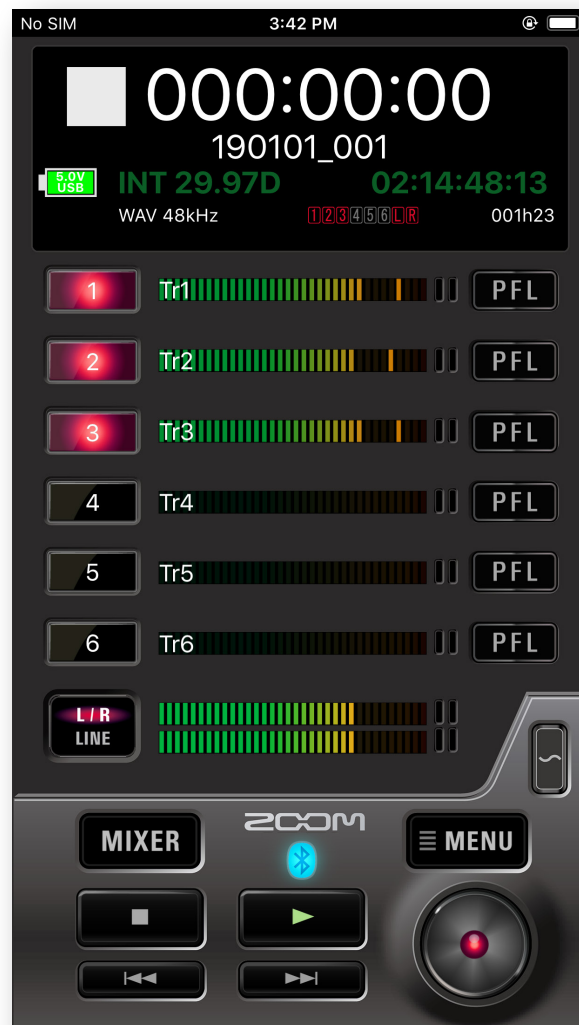


F6 Control

Version 1.1

Operation Manual



Contents

Contents	2
Introduction	3
Copyrights	3
Installing F6 Control	3
Connecting with the recorder	4
Operation screen overview	6
Navigation between screens	6
HOME screen	7
MIXER screen	7
Character input screen	8
Preparing to record	9
Setting recording file format	9
Recording	10
Selecting inputs	10
Linking inputs as a stereo pair	10
Adjusting input levels	11
Recording	11
Setting various functions related to recording	12
Changing recording take settings	13
Playing recordings	14
Selecting a take for playback	14
Playing recordings	14
Mixing takes	15
Folder and take operations	16
Opening the FINDER screen	16
Opening SD cards and folders	16
Working with folders and takes	17
Settings related to input signals	19
Adjusting the input signal monitoring balance	19
Making individual track settings	20
Settings related to output	22
Adjusting output levels	22
Settings related to ambisonic recording	23
Making settings for ambisonic recording	23
Settings related to the auto mix function	24
Activating the auto mix function	24
Playing a test tone	25
Other functions	26
Setting the date and time	26
Viewing the F6 Control version	26
Showing track names	27
F6 Control and an FRC-8 can be used at the same time	27

Introduction

F6 Control is a remote control application designed for use with **zoom** F6 Multitrack Field Recorders (hereafter, "the recorder" in this manual). Including control of recording, playback and mixer adjustments, this app allows you to operate the recorder from an iOS device.

This manual does not explain operation of the recorder unit itself. See the **F6** Operation Manual for detailed information about all its functions.

Copyrights

iPad, iPhone, iPod, and iPod touch are trademarks of Apple Inc., registered in the U.S. and other countries. iOS is a trademark or registered trademark of Cisco in the U.S. and other countries and is used under license. App Store is a service mark of Apple Inc.

The Bluetooth[®] word mark and logo are registered trademarks of Bluetooth SIG, Inc. and these marks are used under license by Zoom Corporation. Other trademarks and trade names are the property of their respective companies.

All trademarks and registered trademarks in this document are for identification purposes only and are not intended to infringe on the copyrights of their respective owners.

Installing F6 Control

1. Open the App Store on the iOS device and search for "F6 Control".

2. Tap "GET" on the F6 Control screen.

This will install F6 Control on the iOS device.



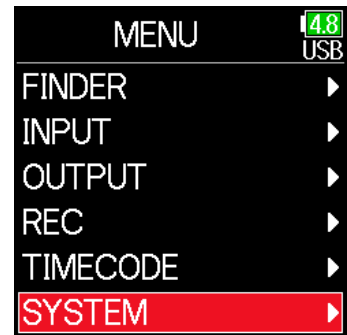
Connecting with the recorder

NOTE

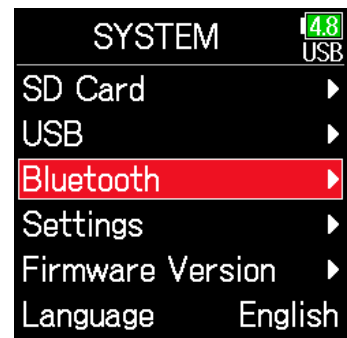
- A separate ZOOM BTA-1 Bluetooth adapter must be installed in the recorder to remotely control it from an iOS device. For details, see the operation manual.



1. Start the recorder.
2. Press
3. Use and to select SYSTEM, and press .



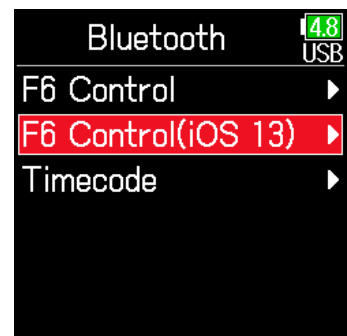
4. Use and to select Bluetooth, and press .



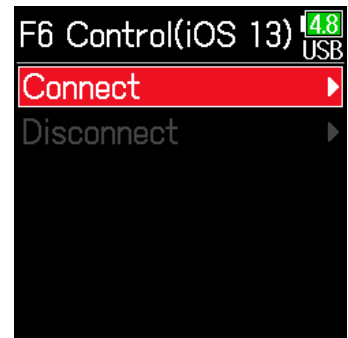
5. Use and to select F6 Control or F6 Control(iOS 13), and press .

Select this according to the iOS version used by the connected iOS device.

- iOS 9 – 12: F6 Control
- iOS/iPadOS 13 or later: F6 Control(iOS 13)



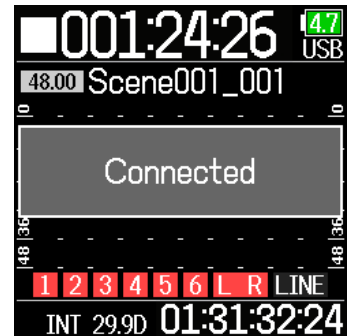
6. Use  and  to select Connect, and press .



7. Launch the dedicated app on the iOS device.

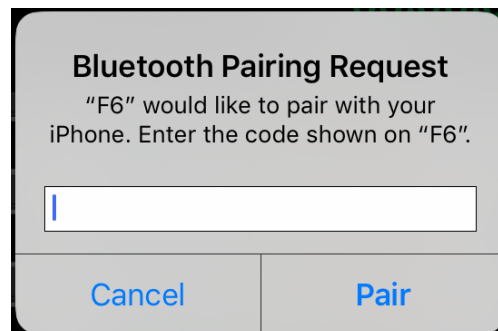
This starts connecting.

When connecting completes, "Connected" will appear on the **F6** screen.



NOTE

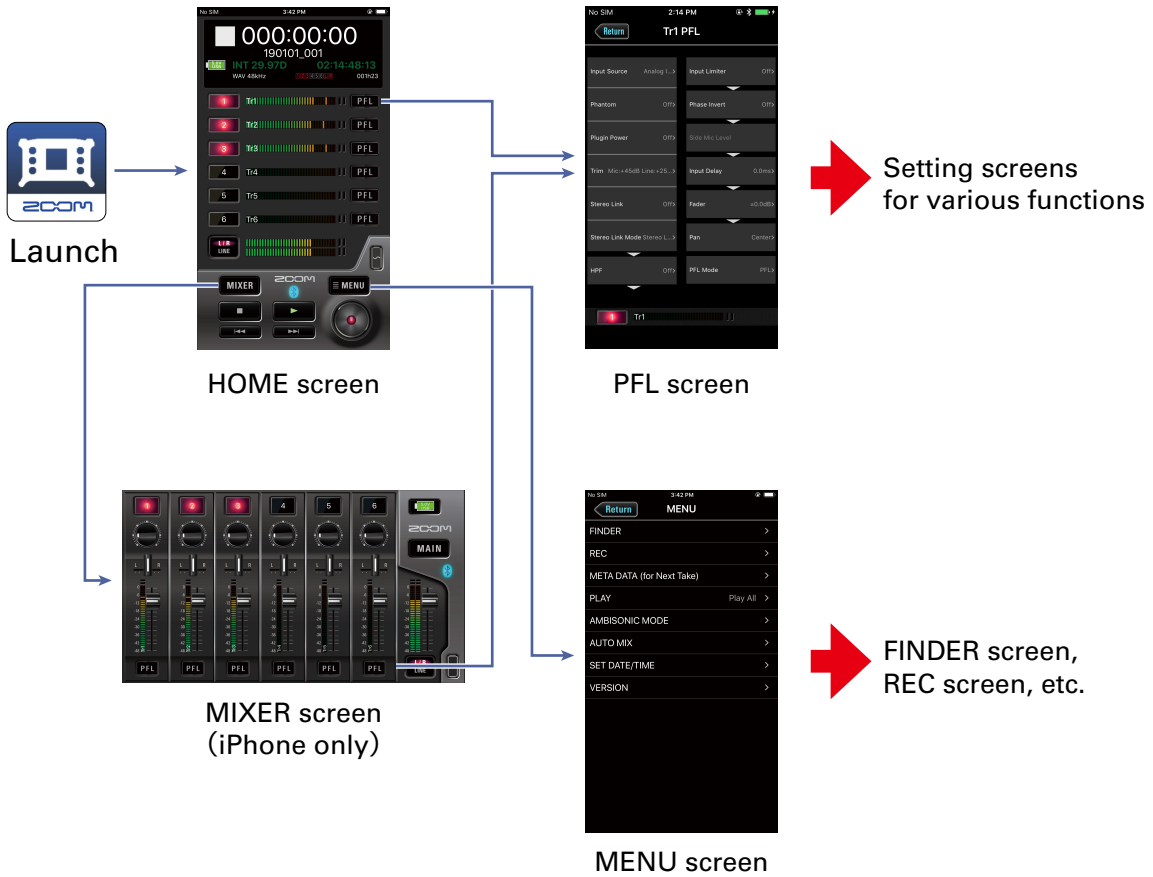
- If a request for pairing appears from F6 Control, input the password shown on the recorder.



- If connection is not successful, move the iOS device closer to the recorder or move both to a place where nothing interferes with radio waves and start F6 Control again. Confirm also that the Bluetooth function of the iOS device can be used. If connection is still not possible, follow the instructions in the iOS device operation manual to unregister the **F6** as a Bluetooth device on it. Then, repeat the procedures from the beginning.

Operation screen overview

Navigation between screens



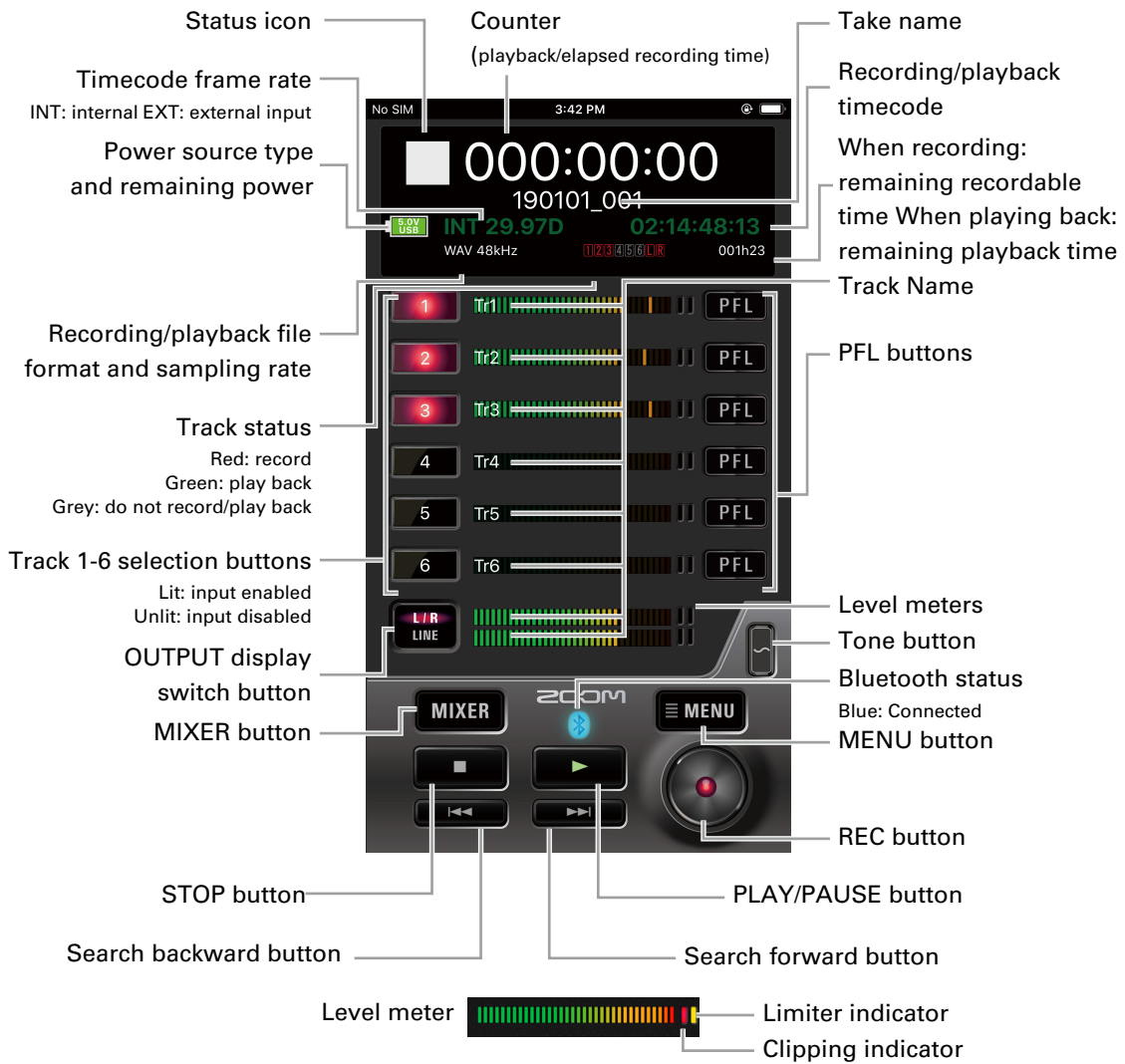
■ HOME screen (iPad version)

In the iPad version, all operations available on the MIXER screen are possible on the HOME screen. There is no separate MIXER screen.



HOME screen

When F6 Control launches, the HOME screen appears.

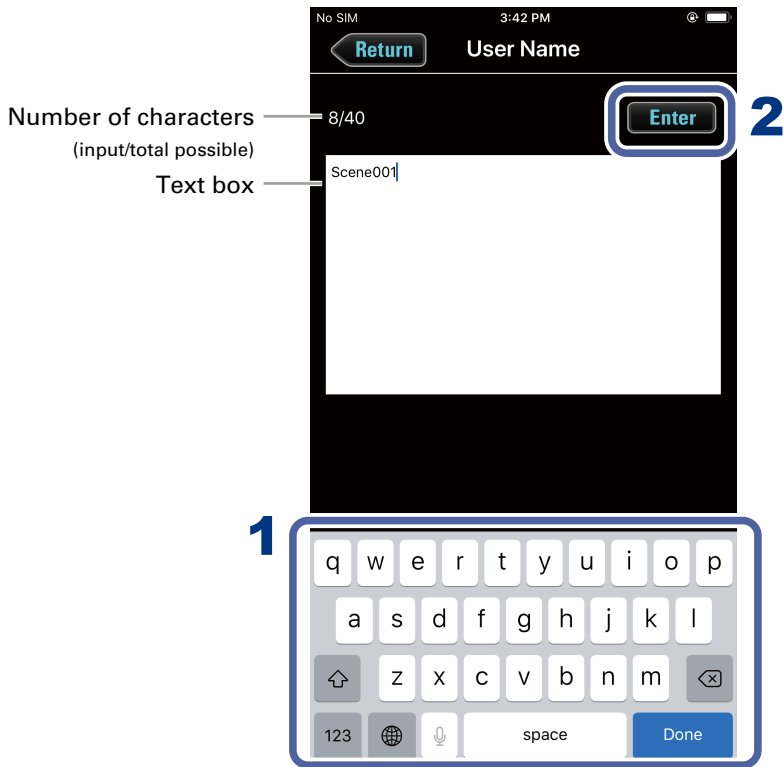


MIXER screen



Character input screen

The character input screen appears for inputting the names of takes and folders, for example.



1. Input characters using the keyboard.

The input characters appear in the text box.

NOTE

- The following characters can be input.
(space) ! # \$ % & ' () + , - 0 1 2 3 4 5 6 7 8 9 ; = @ A B C D E F G H I J K L M N O P Q R S T U V W
X Y Z [] ^ _ ` a b c d e f g h i j k l m n o p q r s t u v w x y z { } ~
Except when inputting a "Note", you cannot put an @ mark or a space at the beginning.

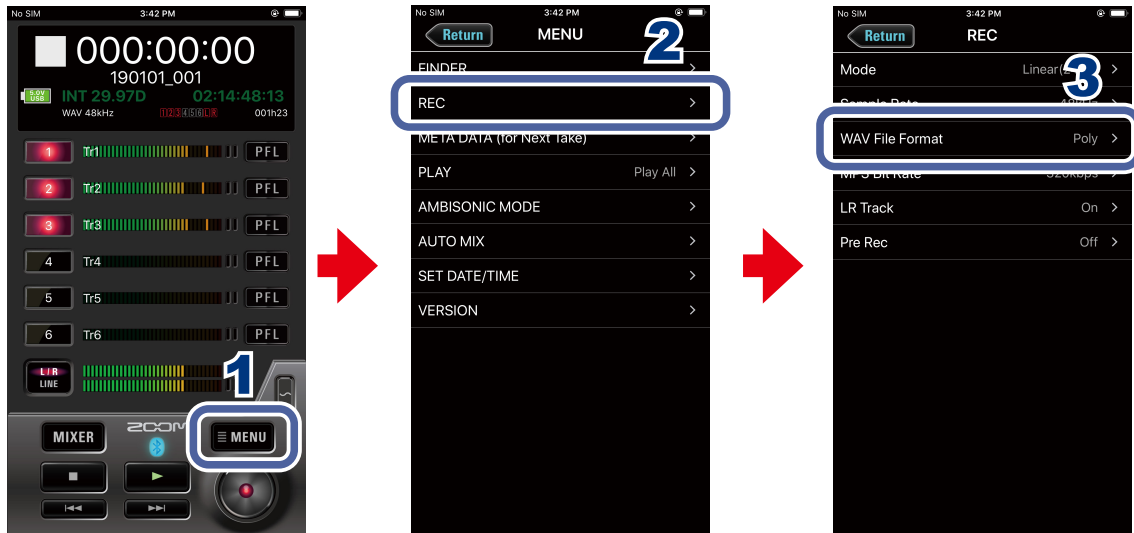
2. When done inputting, tap **Enter**.

Confirm the input characters.

Tap **Return** to cancel the input.

Preparing to record

● Setting recording file format

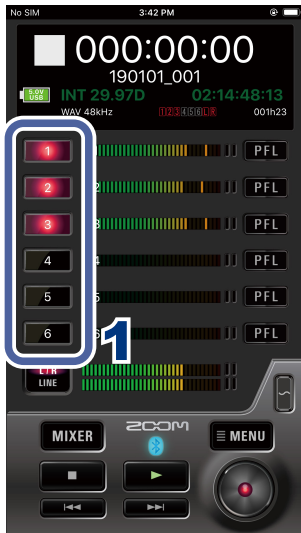


1. Tap **MENU** on the HOME screen.
2. Tap "REC" on the MENU screen.
3. Tap "WAV File Format" on the REC screen, and change the settings.

Recording

Selecting inputs

Select which among Inputs 1–6 to use.



1. Tap the track selection buttons on the HOME screen for the inputs to record.

The buttons light red for the tracks that will be recorded and appear dark for those that will not be recorded.

Linking inputs as a stereo pair

You can use track pairs 1/2, 3/4 and 5/6 as stereo tracks.



1. Tap **PFL** on the HOME screen for a track to link it in stereo.
2. Tap "Stereo Link" on the PFL screen, and change the setting.

Adjusting input levels



1. Tap **MIXER** on the HOME screen.
On an iPad, skip this step.
2. On the MIXER screen (HOME screen on iPad), drag up/down the input trim knob for a track to adjust its level.



NOTE

- Double-tap an input trim knob to reset it to the default value.

Recording




1. Tap  on the HOME screen.

2. Tap  to start a new take when recording.

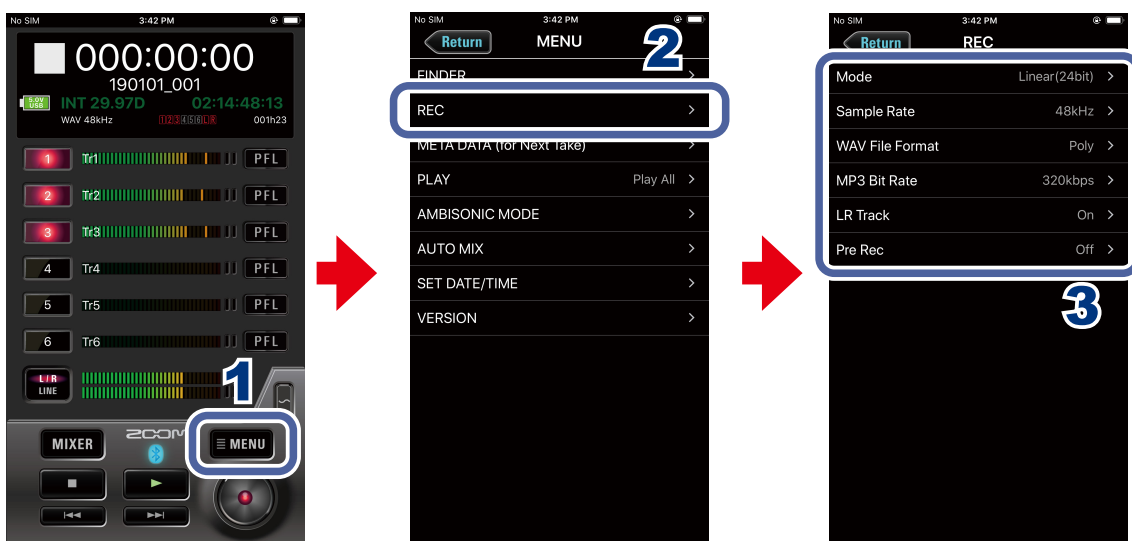
This will end the current take, start a new take and continue to record without interruption.

3. Tap  to pause.

Tap  again to restart recording.

4. Tap  to stop.

Setting various functions related to recording



1. Tap  on the HOME screen.

2. Tap "REC" on the MENU screen.

3. Tap a setting on the REC screen and change it.

▪ **Mode**

Set the bit depth of WAV files.

▪ **Sample Rate**

Set the sampling rate used to record files.

▪ **MP3 Bit Rate**

Set the bit rate of recorded MP3 files.

▪ **LR Track**

Set whether the LR Track is recorded or not.

▪ **Pre Rec**

Set the pre-recording function, which captures audio before recording starts, to On/Off.

Changing recording take settings



You can change the recording take scene name, for example.



1. Tap **MENU** on the HOME screen.
2. Tap “META DATA (for Next Take)” on the MENU screen.
3. Tap a setting and then change it.
 - **Scene Name**
Set how the scene name will be assigned to the next take recorded.
 - **Note**
Input characters for a note to use as metadata in the next take recorded.
 - **Track Name**
Edit the track name used for the next take recorded.









Playing recordings

Selecting a take for playback

1. Use  and  on the HOME screen.
Doing this changes the playback take.



Playing recordings



1. Tap  on the HOME screen.
2. Touch and hold  to search forward, and touch and hold  to search backward.
Tap  and  to jump to marks.
3. Tap  to pause.
Tap  again to restart playback.
4. Tap  to stop.

Mixing takes



1. Tap  on the HOME screen.
2. Tap .

On an iPad, skip this step.
3. Adjust parameter settings on the MIXER screen (HOME screen on iPad).

Adjusting pan faders

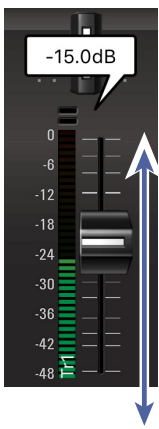


Drag a pan fader left and right to adjust its value.

NOTE

- Double-tap a pan fader to reset it to the default value.

Adjusting level faders




Drag a level fader up and down to adjust its value.

NOTE

- Double-tap a level fader to reset it to the default value. If already set to its default value, doing this mutes the track.

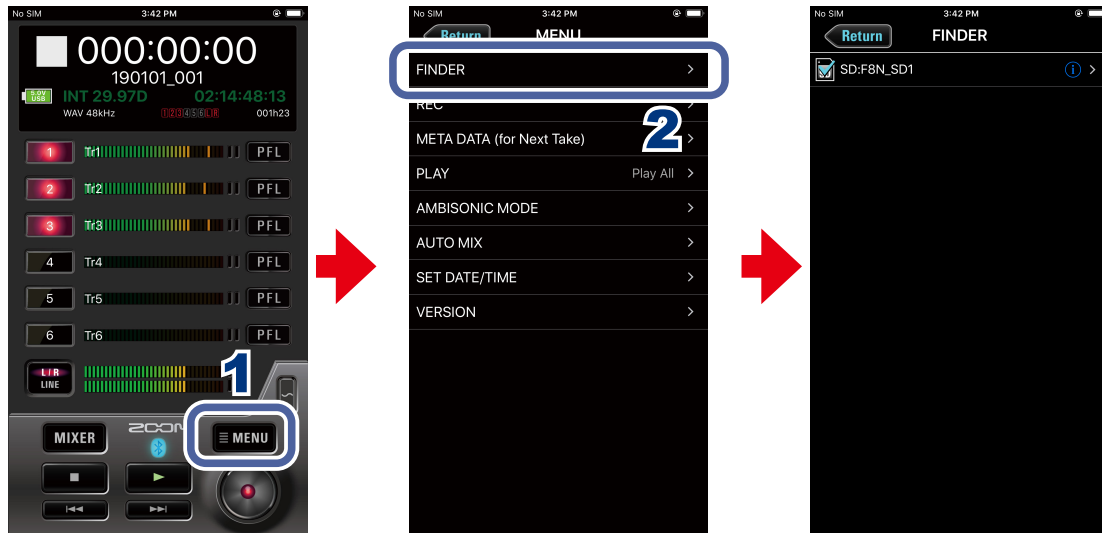
NOTE

- If you tap  to switch to L/R, you can change the L/R level.

Folder and take operations

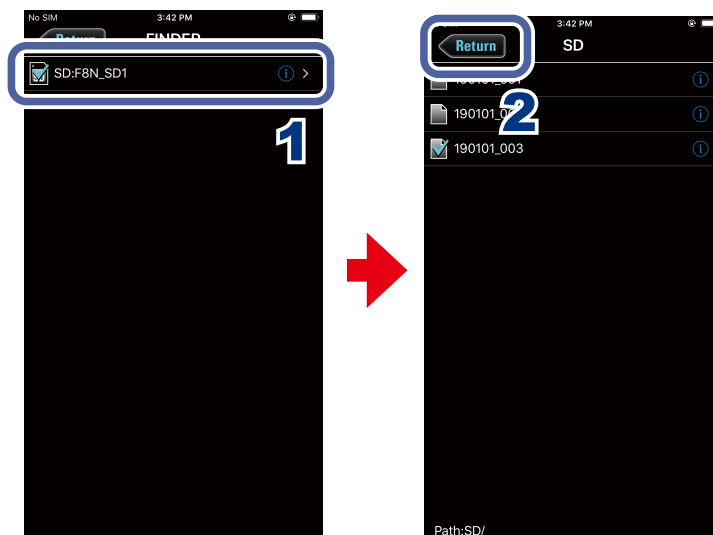
Opening the FINDER screen

Check and edit folders and takes on SD cards in the recorder on the FINDER screen.



1. Tap **MENU** on the HOME screen.
2. Tap “FINDER” on the MENU screen.

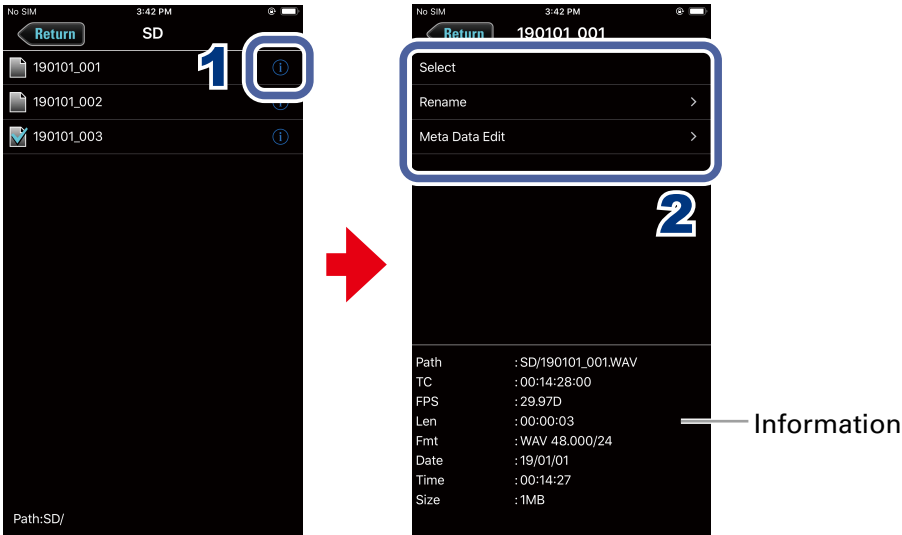
Opening SD cards and folders



1. On the FINDER screen, tap the name of the folder that you want to open.
A list of folders and takes inside that folder is shown.
2. Tap **Return** to move up one level.

Working with folders and takes

When working with folders and takes, you can check their information, change their names and edit their metadata.



1. To work with a folder/take, tap the  to the right of its name.

This opens the OPTIONS screen where you can check the following information.

Explanation of information shown

Selected item	Data item name	Description
SD card	Free Size Remain	Open space Size Remaining recordable time
Folder	Path Date Time	Folder path Date created Time created
Take	Path TC FPS Len Fmt Date Time Size	Take path Timecode Frame rate Length Recording format Date created Time created Size

2. Tap an item to change its setting or work with it.

▪ **Select**

Use this procedure to select the folder that contains the take to be played back or the folder to use for recording takes, and return to the HOME screen.

NOTE

- When an folder is selected, the first file inside it will be selected.

▪ **Rename**

Change the folder or take name (→“Character input screen” on page 8).

▪ **Meta Data Edit**

Check and edit take information (metadata).

Settings related to input signals

Adjusting the input signal monitoring balance



1. Tap **MIXER** on the HOME screen.

On an iPad, skip this step.

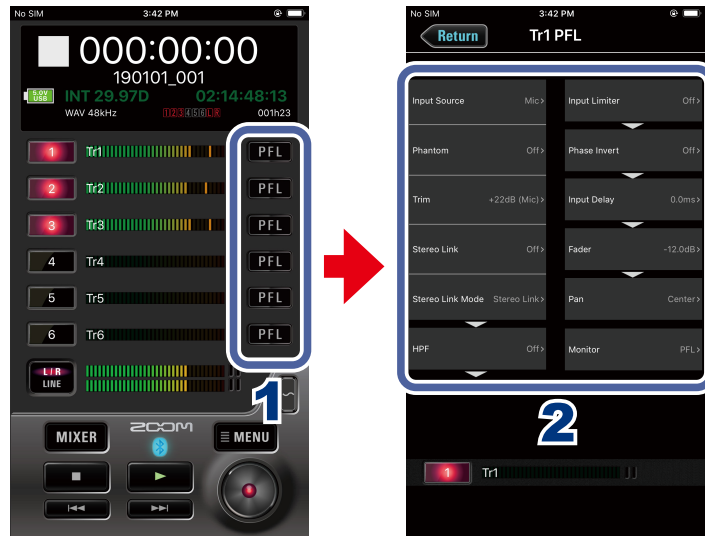
2. Adjust the parameter settings.

NOTE

- These volume and pan settings only affect the monitoring signals. They have no effect on recorded data.
- If you tap **L/R LINE** to switch to L/R, you can change the L/R level.

Making individual track settings

Use the PFL screen to make settings for individual tracks.



1. Tap **PFL** on the HOME screen for the track to set.

This opens the PFL screen.

2. Tap the setting to change on the PFL screen and change it.

▪ **Input Source**

Set the input source of each track.

▪ **Phantom**

Phantom power can be turned on/off and it is voltage set for each input separately.

▪ **Trim**

This adjusts the input level.

▪ **Stereo Link**

This sets the stereo linking of the input.

▪ **Stereo Link Mode**

Signals from a mid-side format stereo mic input through stereo-linked tracks are converted to an ordinary stereo signal.

▪ **HPF**

The high pass filter can cut low frequencies to reduce the sound of wind, vocal pops and other noise.

- **Input Limiter**

The limiter can prevent distortion by controlling input signals that have excessively high levels.

- **Phase Invert**

The phase of the input signal can be inverted.

- **Input Delay**

If there are differences in the timing of input sounds, use this function to correct them when recording.

- **Fader**

Adjusts the level of the input signal.

- **Pan**

Adjusts the stereo balance of the sound.

- **PFL Mode**

On the PFL screen, you can set the monitoring sound to be either pre-fader listening (PFL) or post-fader solo (SOLO).

Settings related to output

Adjusting output levels



- 1.** Tap **MIXER** on the HOME screen.
On an iPad, skip this step.
- 2.** On the MIXER screen (HOME screen on iPad), tap **L/R LINE** to switch to the L/R or LINE screen.
- 3.** Drag output level faders up and down to adjust their levels.

Settings related to ambisonic recording

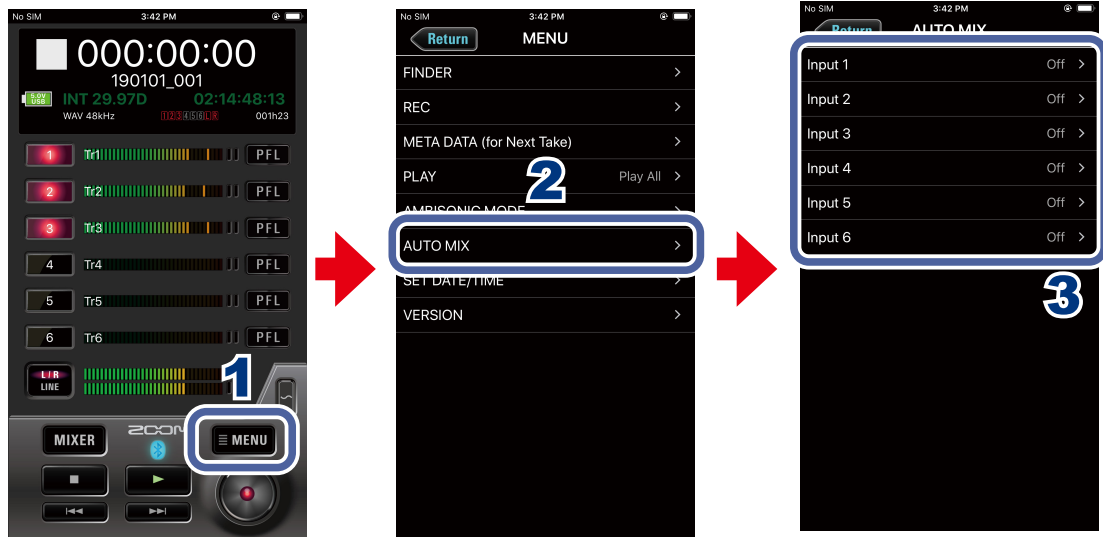
Making settings for ambisonic recording



1. Tap **MENU** on the HOME screen.
2. Tap “AMBISONIC MODE” on the MENU screen.
3. Tap a setting on the AMBISONIC MODE screen and change it.
 - **Format**
Set the ambisonic recording format.
 - **Mic Position**
Set the mic position used for ambisonic recording.

Settings related to the auto mix function

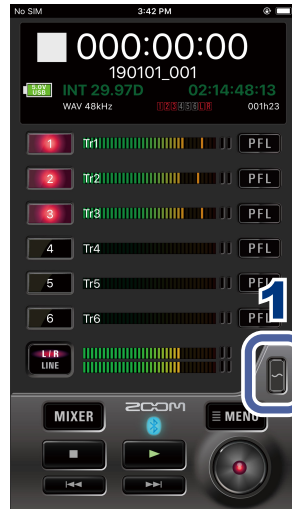
Activating the auto mix function



1. Tap **MENU** on the HOME screen.
2. Tap "AUTO MIX" on the MENU screen.
3. Tap input tracks on the AUTO MIX screen to enable the auto mix function for them.


Playing a test tone

A test tone can be played in order to adjust the level of a connected device.




1. Touch on the HOME screen.

This starts output of the test tone.

Stop touching  to stop the test tone.

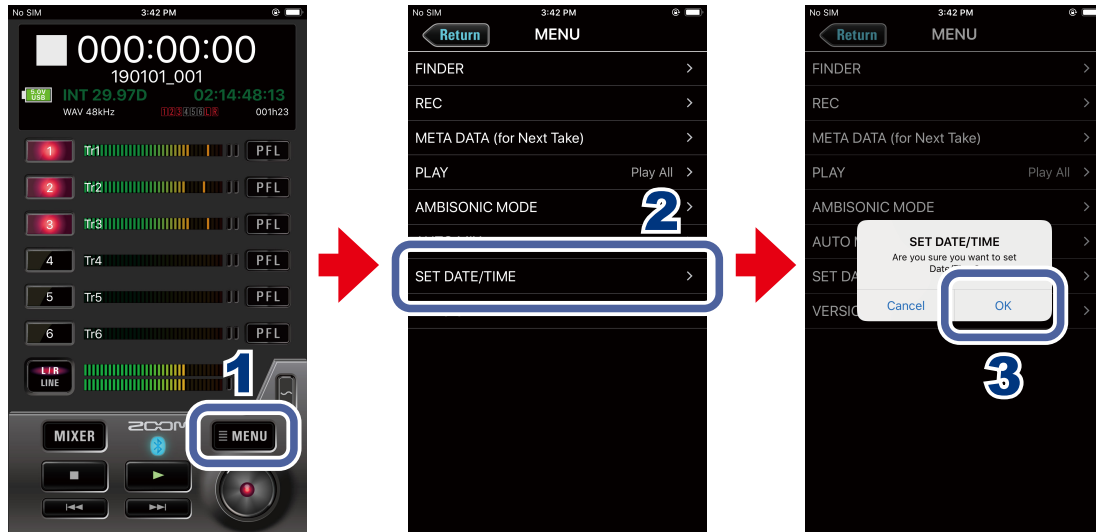
NOTE

- When adjusting the level used with a device connected to the LINE OUT jack, touch  while adjusting the LINE OUT level.

Other functions

Setting the date and time

The recorder date and time can be set to the system clock values of the iOS device.



1. Tap **MENU** on the HOME screen.
2. Tap "SET DATE/TIME" on the MENU screen.
3. Tap "OK" on the confirmation pop-up.
This completes setting the recorder date and time.

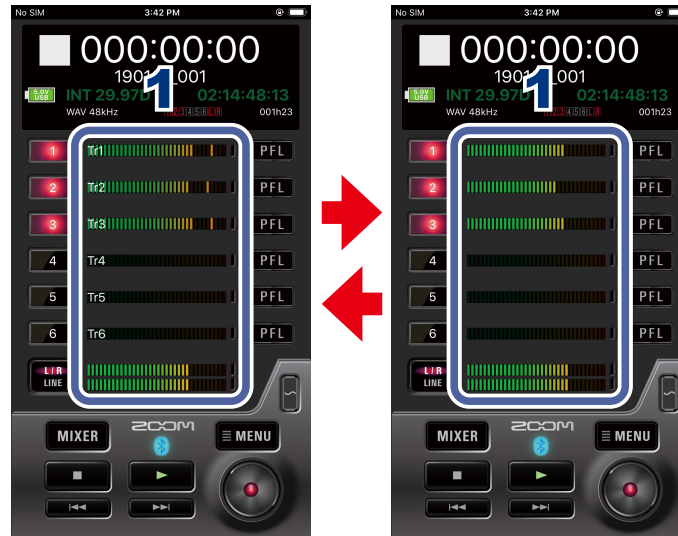
Viewing the F6 Control version

You can check the F6 Control version.

1. Tap **MENU** on the HOME screen.
2. Tap "VERSION" on the MENU screen.

Showing track names

The name of each track can be shown.



1. Tap a level meter.

Tapping alternately shows or hides all the track names.

F6 Control and an FRC-8 can be used at the same time

While F6 Control is connected to a recorder, an **FRC-8** can also be connected to the recorder and used at the same time.

When using F6 Control and an **FRC-8** at the same time, F6 Control functions as a monitor. For this reason, only the following F6 Control functions will be usable. Other functions will be disabled.

- OUTPUT display switch button
- MIXER button (iPhone only)
- MAIN button (iPhone only)
- Switching track name display on/off

NOTE

- When the recorder is being used as an audio interface, the recorder cannot be connected with F6 Control.



ZOOM CORPORATION

4-4-3 Kanda-surugadai, Chiyoda-ku, Tokyo 101-0062 Japan
www.zoom.co.jp

Z2I-3779-03