



**BH112**  
**Guitar Speaker Cabinet**

**User's Guide**



## Introduction

**Congratulations!** You have just purchased a Blackheart Engineering BH112 Guitar Speaker Cabinet. You're a guitar player that could have bought anything to bring your mind-bending chops to life, to unleash upon the masses the wrath of your otherworldly, mad riffin' skills. Did you settle? No, because you're more than just "whatever." You're like, "hear me roar!" so you go with Blackheart Engineering components — tube amps and Eminence custom-designed Blackheart speakers.

We like you. You've got style. Speaking of which, take a look at the way this speaker cabinet is built, with the finest materials and components available; ½" radius corners in a void-free birch ply cabinet that looks like Michelangelo covered it for you personally. Who knows, you might be in some sort of edge band; knock the thing around a bit. That's a Blackheart thing. We make rock-solid, no compromise music gear that sounds like choruses of angels that sing in big, beefy power chords. We work with glass, metal and wood just like the powers that be intended when they created rock and roll. We take every amp and speaker cabinet personally and we do it assuming you worked hard to get it and we're not letting you down. That fancy tattoo logo was inspired by one of our test animals.\* He said a great amp leaves a permanent mark on your tone and shapes how you play, write, perform, etc. So, when you laid down coin for a Blackheart, you kind of got hitched.

So thanks for laying down your hard earned cash for a Blackheart Engineering product. We're not going to disappoint you. You've got, in your hands, one of the best sounding, best quality, speaker cabinets that's ever been made.

Vous avez notre coeur,

Pyotr Belov

Kevin Van Pamel

Walter Hsu

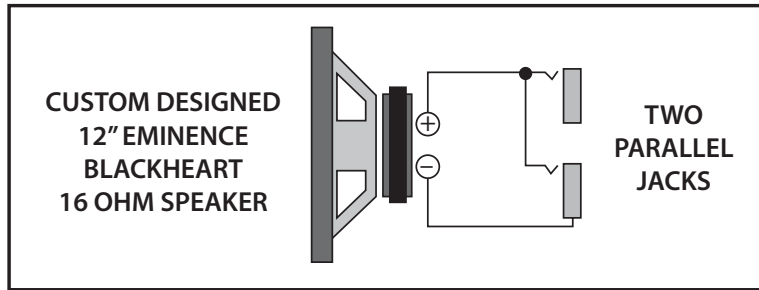
### **Blackheart Engineering**

\* We don't test on little furry helpless animals of course. We call our artists animals because, well, we've eaten with them. They give their time and opinions to us on a regular basis and have a lot to do with how good your Blackheart is.

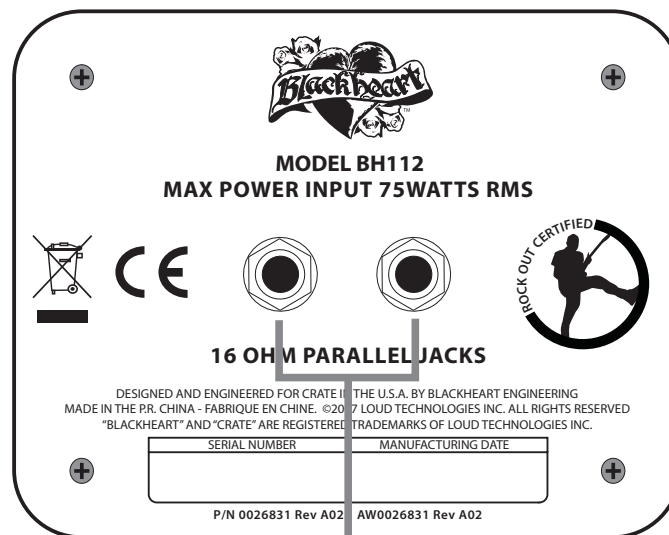
### **Important Safety Instructions**

1. Read, follow, and keep these instructions. Heed all warnings.
2. This speaker is capable of producing high sound pressure levels that may cause permanent hearing damage. User caution is advised and ear protection is recommended during use.
3. This speaker is designed for use on a sturdy, level surface. Whenever stacking speaker cabinets, do not stack more than two high.
4. Speaker cables are a tripping hazard and must be routed out of traffic areas and away from any possible accidental contact.
5. Do not expose this speaker to rain or moisture. Do not place liquid filled containers on this speaker. Clean only with a damp cloth.
6. Repair or service of this speaker should be performed only by qualified personnel.

# System Block Diagram



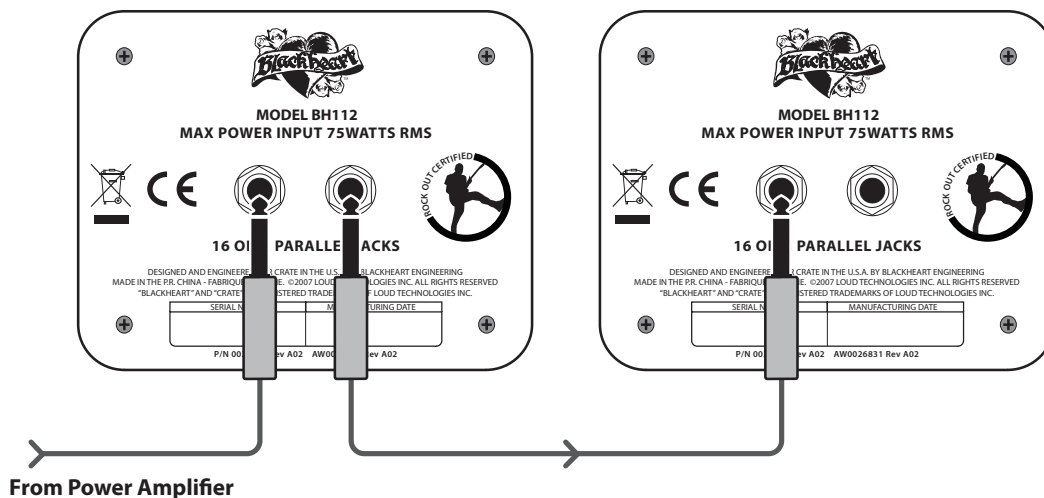
## Rear Panel Connector Plate



1

**1. 75W 16 Ohm Parallel 1/4" Jacks:** Connect the output of your amplifier (rated up to 75W into 16 ohms) to one of these jacks using good quality (non-shielded) speaker cable. *Never use (shielded) instrument cable to connect speakers to an amplifier.*

You can use the other jack to connect a second Blackheart BH112 speaker cabinet in parallel. This will present a total load of 8 ohms to the amplifier (maximum power input = 150 watts rms into 8 ohms).





---

## BH112 TECHNICAL SPECIFICATIONS

---

Impedance	16 ohms
Power Rating	75 watts
Cabinet Construction	15-ply, 18 mm thick, void-free birch plywood
Speaker Specs	Custom Designed Eminence Blackheart Speaker British Voiced, 12", 1.75" voice coil diameter, 38 oz magnet
Inputs	2 x 1/4" parallel jacks
Size (H x W x D)	18.6 in/473 mm (including feet) x 18.0 in/460 mm x 11.0 in/280 mm
Weight	29.75 lb/13.5 kg

---

**The Blackheart BH112 Speaker Cabinet is covered with a durable fabric-backed vinyl material. Wipe it clean with a lint-free cloth. Never spray cleaning agents onto the cabinet. Avoid abrasive cleansers which would damage the finish.**

*Crate continually develops new products, as well as improves existing ones. For this reason, the specifications and information in this manual are subject to change without notice.*

*"Blackheart" and "Crate" are registered trademarks of LOUD Technologies Inc. All other brand names mentioned are trademarks or registered trademarks of their respective holders and are hereby acknowledged.*

## Service Information

If you are having a problem with your Blackheart BH112 Speaker Cabinet, you can go to our website ([www.blackhearteng.com](http://www.blackhearteng.com)) and click on "Heart Surgery" for service information, or call 1-800-898-3211 during business hours (7 am to 5 pm PST, Monday-Friday). If you are outside of the U.S., contact your local distributor for technical support and service.



AMPLIFIER SERIES

[www.blackhearteng.com](http://www.blackhearteng.com)

©2007 LOUD Technologies Inc.

16220 Wood-Red Road NE • Woodinville, WA 98072

Part No. 0027867 Rev. A 09/07

