

**M-AUDIO**

# **MIDISPORT**

Anniversary Edition

2x2 | 4x4

## **User Guide**

## 1 Introduction

**Thank you for purchasing an M-Audio MIDISPORT Anniversary Edition MIDI interface.**

MIDI stands for “Musical Instrument Digital Interface” and is the protocol used by MIDI keyboards and other devices (sound modules, sequencing software, virtual instruments, etc.) to communicate with each other. MIDISPORT provides your computer with MIDI input and MIDI output ports, each supporting 16 MIDI channels.

This interface’s Universal Serial Bus (USB) connection assures fast and reliable transfer of MIDI data to and from the computer. Furthermore, the interface is portable, and can be conveniently attached to your computer’s USB port without requiring computer disassembly or an external power supply.

MIDISPORT Anniversary Edition is class-compliant,\* which means that Windows XP, Windows Vista, and Mac OS X can use the device without the need to install additional drivers by simply connecting MIDISPORT to your computer. Note that using MIDISPORT as a class-compliant device in Windows XP or Vista will only give you access to basic MIDI input and output capabilities. However, to use the more advanced features of your MIDISPORT, you must install the M-Audio drivers for Windows. The advanced features and installation procedure is described in Section 5 of this guide.

*\*Only MIDISPORT Anniversary Edition is class-compliant and will work under Windows XP, Windows Vista, or Mac OS X without additional drivers. MIDISPORT 2x2 or 4x4 interfaces from previous production series (blue, green or silver chassis) are not class-compliant and require the M-Audio driver to be installed in order to be recognized by the computer.*

## 2 Features

**Your MIDISPORT Anniversary Edition USB/MIDI interface offers the following features:**

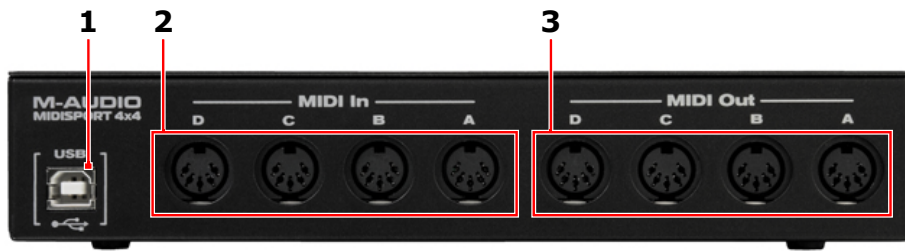
- **MIDISPORT 2x2:** 2-in/2-out MIDI interface (32 discrete MIDI input channels, 32 discrete MIDI output channels)
- **MIDISPORT 4x4:** 4-in/4-out MIDI interface (64 discrete MIDI input channels, 64 discrete MIDI output channels)
- USB 2.0 (full-speed) device, backward compatible to USB 1.1
- MIDI activity indicators for each port
- bus-powered and portable—no external power supply required
- compact and lightweight for mobile or desktop use
- standalone MIDI MERGE and Thru operation (MIDISPORT 2x2 only)

## 3 Package Contents

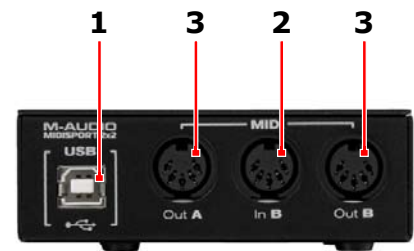
**The MIDISPORT package includes:**

- MIDISPORT Anniversary Edition USB MIDI Interface
- M-Audio MIDISPORT Anniversary Edition Series CD-ROM
- USB cable
- Printed Quick Start Guide

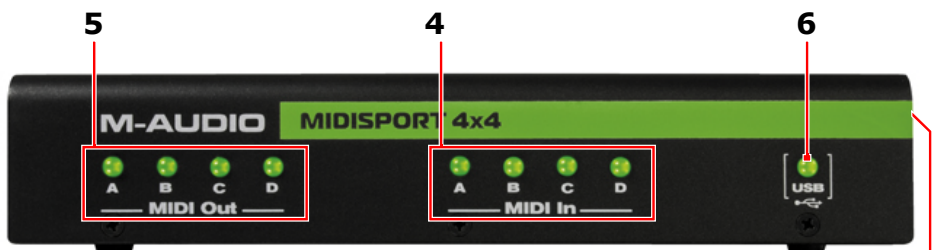
## 4 Hardware Overview



MIDISPORT 4x4 Rear View



MIDISPORT 2x2 Rear View



MIDISPORT 4x4 Front View



MIDISPORT 2x2 Front View

- 1. USB port:** Connect to an available USB port on your computer using the USB cable provided.
- 2. MIDI IN ports:** These ports receive MIDI signals from your keyboard, control surface, or other MIDI device. Connect one of the MIDI input ports on MIDISPORT to your external instrument's MIDI output jack.
- 3. MIDI OUT ports:** These ports transmit MIDI signals to your destination device. Connect one of the MIDI output ports on MIDISPORT to your external instrument's MIDI input jack.
- 4. MIDI In LEDs:** These LEDs indicate MIDI input activity
- 5. MIDI Out LEDs:** These LEDs indicate MIDI output activity.
- 6. USB LED:** This LED pulses when MIDISPORT is functioning as a MIDI interface to your computer.  
*MIDISPORT 2x2 only: If the LED glows steadily, but half as bright, then MIDISPORT 2x2 is operating in Merge Mode.*
- 7. MIDI Thru-USB/Merge button (MIDISPORT 2x2 only):** This button selects whether MIDISPORT 2x2 is in MIDI Thru mode (button set to the 'out' position), in Merge mode (standalone operation; button 'in') or in MIDI Interface mode (used with a computer; button 'in').

### USB Interface Mode

MIDISPORT 2x2 is in USB Interface mode when the MIDI Thru - USB/Merge button is set to the 'in' position and the device is connected to and initialized by an active host computer via USB. In this mode the input and output ports appear as discrete inputs and outputs in your music software and are completely independent of each other.

### Merge Mode

In Merge Mode, MIDISPORT functions as a standalone device (i.e. it does not operate as an interface to a computer). All MIDI data from the In A and In B ports is combined (merged), and this merged stream is output identically on both the Out A and Out B port. In this scenario, power must be provided by an optional USB-type external power supply, and the MIDI Thru - USB/Merge button must be set to the 'in' position.

→ **NOTE:** In some cases, you can use Merge Mode while connected to a computer via USB, but only if the operating system is not currently running. In this scenario, the computer serves only as a power supply while MIDISPORT is operating as an independent device. This is possible, because some computers provide power to their USB jacks even when shut down or in sleep mode. Please note that it may be necessary to disconnect and reconnect the USB cable after shutting down the computer for MIDISPORT to disengage USB Interface Mode and enter Merge Mode.


Check the documentation associated with your computer to see if it provides power to its USB jacks while shut down or in sleep mode. A separate USB-type external power supply is not required if MIDISPORT is connected to such a jack.

### MIDI Thru Mode

MIDISPORT 2x2 is in MIDI Thru mode when the MIDI Thru - USB/Merge button is set to the 'out' position. In this mode, MIDISPORT passes the In A data stream directly to Out A and the In B data stream directly to Out B. This mode bypasses connected computers and does not require power to operate. Thus, MIDI Thru mode can always be enabled, regardless of whether or not MIDISPORT is connected to a computer, or a power source.



*optional USB-type external  
power supply*

8. **Kensington Security Slot** : This jack is compatible with Kensington security cables to protect your device from theft.

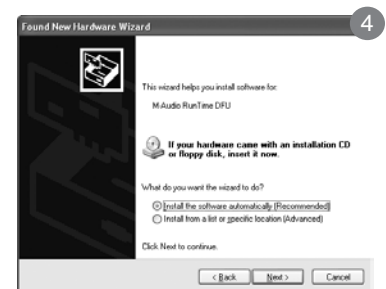
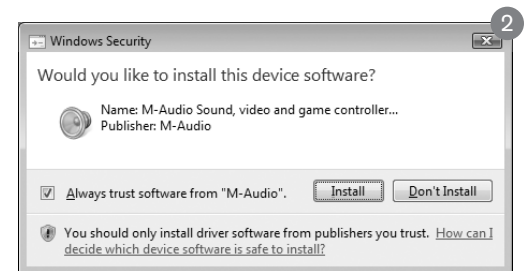
## 5 Windows XP and Vista Installation

Since the interface is class-compliant, it will work without the need to install additional drivers. However, using MIDISPORT as a class-compliant device in Windows XP or Vista will only give you access to basic MIDI input and output features. You must install the MIDISPORT drivers if you would like to access the more advanced features found within the interface. Installing the drivers allows you to:

1. Use MIDISPORT with more than one application at the same time (i.e., multi-client support)
2. Send or receive long SysEx (system exclusive) messages
3. Use multiple MIDISPORT interfaces and identify each interface via a clear device number and port naming system.

### Driver Installation for Windows XP and Windows Vista Users

1. If you have already connected MIDISPORT to your computer, disconnect it before beginning the driver installation.
2. Download the most recent MIDISPORT drivers by going to the Support > Drivers page at [www.m-audio.com](http://www.m-audio.com).
3. Double-click the driver file once it has finished downloading.
4. Follow the driver installer's on-screen instructions.
5. At various points in this installation process, you may be notified that the driver being installed has not passed Windows Logo Testing (Windows XP), or asked whether the program you wish to run is a trusted application (Windows Vista). Click Continue Anyway <sup>1</sup> or Install <sup>2</sup> to proceed with installation.
6. Once the installer has completed, click "Finish."
7. Attach MIDISPORT to an available USB port. If you are using Windows Vista, your MIDISPORT installation is now complete. If you are using Windows XP, proceed to steps 8-11.
8. Windows will identify the new device and will ask if you want to search the Internet for a driver. Select "No, not this time" and press "Next." <sup>3</sup>
9. Windows will display a "Found New Hardware" Wizard. Choose "Install software automatically" and click "Next." <sup>4</sup>
10. Once the Wizard has completed, click "Finish." You may be presented with a second Found New Hardware Wizard. If so, then repeat steps 8-10.
11. Once the installation is complete, you will see a message stating, "Your new hardware is installed and ready to use."



### Driver Installation for Mac OS X Users

MIDISPORT Anniversary Edition is class-compliant and all listed features are fully supported on Mac OS X without the need to install additional drivers. Simply connect MIDISPORT to your Mac OS X computer and begin using it.

## **6** Setting Up Your MIDI Studio

A typical MIDI system setup might include your MIDISPORT, a computer with MIDI sequencing software, a MIDI controller keyboard, and a MIDI-compatible sound module.

In the setup described above, MIDISPORT can be used to route MIDI data between the controller keyboard, the sound module, and the computer. To set up MIDISPORT in this way:

1. Connect MIDISPORT to your computer using the provided USB cable.
2. Connect your controller keyboard's MIDI Out to a MIDI In port on MIDISPORT.
3. Connect one of the MIDI Output ports on MIDISPORT to the MIDI In of your sound module.
4. Configure your MIDI sequencing software to send and receive MIDI signals from MIDISPORT. Consult your sequencing software's documentation to learn how to do this.

### Using MIDISPORT in your Application Software

Once MIDISPORT has been installed, you will need to configure your MIDI application software to utilize it. In many music applications, this entails going into the Options, Preferences, or Device Setup menu in your music software application and selecting the appropriate MIDI input device. Many MIDI applications have a MIDI port configuration or MIDI settings dialog window. This window may be called "MIDI Devices" or "MIDI Setup." This is where you make your MIDI Input and Output settings.

The MIDI port selection shows each of the MIDISPORT inputs and outputs. These inputs and outputs are numbered to correspond to the physical inputs and outputs of your MIDISPORT interface. Make sure that each of these inputs and outputs are highlighted or checked in the dialog box in order for the ports to be enabled for use by the application. Depending on your specific music software, you may also have to select which MIDI input and output you would like to associate with a given recording or playback track.

Follow your MIDI sequencing program's operating instructions for setting up the rest of your MIDI studio. To play one of your synthesizers or modules from the sequencer, select the MIDISPORT MIDI output that is connected to the MIDI input of that instrument. Consult your sequencer's operating instructions for more details.

In Windows Vista and Macintosh OS X, MIDISPORT MIDI ports will appear as "MIDISPORT 2x2 Anniv or MIDISPORT 4x4 Anniv.\*"

In Windows XP, the MIDISPORT MIDI ports will appear as "USB Audio Device" if the optional drivers have not been installed. After installing these drivers in Windows XP, MIDISPORT will appear as "MIDISPORT 2x2 Anniv or MIDISPORT 4x4 Anniv.\*" Please consult your software's documentation for instructions on how to configure the software for use with MIDI input devices.

*\*The actual MIDISPORT name displayed by your computer may vary slightly depending on what recording software is being used.*

# 7 Warranty Terms and Registration

## Warranty Terms

M-Audio warrants products to be free from defects in materials and workmanship, under normal use and provided that the product is owned by the original, registered user. Visit [www.m-audio.com/warranty](http://www.m-audio.com/warranty) for terms and limitations applying to your specific product.

## Warranty Registration

Immediately registering your new M-Audio product entitles you to full warranty coverage and helps M-Audio develop and manufacture the finest quality products available. Register online at [www.m-audio.com/register](http://www.m-audio.com/register) to receive FREE product updates and for the chance to win M-Audio giveaways.

© 2008 Avid Technology, Inc. All rights reserved. Product features, specifications, system requirements and availability are subject to change without notice. Avid, M-Audio and MIDISPORT are either trademarks or registered trademarks of Avid Technology, Inc. All other trademarks contained herein are the property of their respective owners.

ESD and Fast Transient may cause the unit to temporarily malfunction. Switch off and on again to restore normal operation.

**WARNING:** This product contains chemicals, including lead, known to the State of California to cause cancer, and birth defects or other reproductive harm. **Wash hands after handling.**



## M-Audio USA

5795 Martin Rd., Irwindale, CA 91706

### Technical Support

web . . . . . www.m-audio.com/tech  
tel (pro products) . . . . . (626) 633-9055  
tel (consumer products) . . . . . (626) 633-9066  
fax (shipping) . . . . . (626) 633-9032

### Sales

e-mail . . . . . sales@m-audio.com  
tel . . . . . 1(866) 657-6434  
fax . . . . . (626) 633-9070

**Web** . . . . . www.m-audio.com

## M-Audio U.K.

Floor 6, Gresham House, 53 Clarendon Road, Watford  
WD17 1LA, United Kingdom

### Technical Support

e-mail . . . . . support@maudio.co.uk  
tel (Mac and PC support) . . . . . +44 (0)1753 658630

### Sales

tel . . . . . +44 (0)1923 204010  
tel . . . . . +44 (0)1923 204039

**Web** . . . . . www.maudio.co.uk

## Benelux

### Technical Support

Belgium tel . . . . . +32 22 54 88 93  
Holland tel . . . . . +31 35 625 0097

## M-Audio France

Floor 6, Gresham House, 53 Clarendon Road, Watford  
WD17 1LA, United Kingdom

### Renseignements Commerciaux

tel . . . . . 0 810 001 105  
email . . . . . info@m-audio.fr

### Assistance Technique

PC . . . . . 0 820 000 731  
Mac . . . . . 0 820 391 191  
e-mail (PC) . . . . . support@m-audio.fr  
email (Mac) . . . . . mac@m-audio.fr  
fax . . . . . +33 (0)1 72 72 90 52

**Web** . . . . . www.m-audio.com

## M-Audio Germany

Kuhallmand 34, D-74613 Ohringen, Germany

### Technical Support

email . . . . . support@m-audio.de  
tel . . . . . +49 (0)7941 - 9870030  
tel . . . . . +49 (0)7941 - 98 70070

### Sales

e-mail . . . . . info@m-audio.de  
tel . . . . . +49 (0)7941 98 7000  
fax . . . . . +49 (0)7941 98 70070

**Web** . . . . . www.m-audio.de

## M-Audio Canada

1400 St-Jean Baptiste Ave. #150, Quebec City,  
Quebec G2E 5B7, Canada

### Technical Support

e-mail . . . . . techcanada@m-audio.com  
tel . . . . . (418) 872-0444  
fax . . . . . (418) 872-0034

### Sales

e-mail . . . . . infocanada@m-audio.com  
tel . . . . . (866) 872-0444  
fax . . . . . (418) 872-0034

**Web** . . . . . www.m-audio.ca

## M-Audio Japan

エムオーディオ/アビッドテクノロジー株式会社  
〒107-0052 東京都港区赤坂 2-11-7 ATT新館ビル4F  
Avid Technology K.K. | M-Audio  
4F ATT Bldg. 2-11-7 Akasaka, Minato-ku Tokyo 107-0052 Japan

### カスタマーサポート (Technical Support)

e-mail . . . . . win-support@m-audio.jp  
e-mail (Macintosh 環境専用) . . . . . mac-support@m-audio.jp  
tel . . . . . 052-218-0859(10:00~12:00/13:00~17:00)

### セールスに関するお問い合わせ (Sales)

e-mail . . . . . info@m-audio.jp  
tel . . . . . 052-218-3375  
fax . . . . . 052-218-0875

**Web** . . . . . www.m-audio.jp