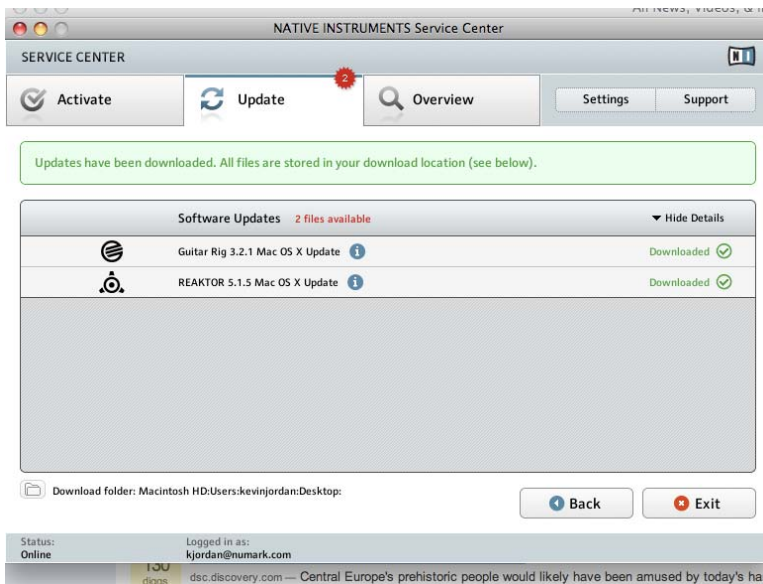
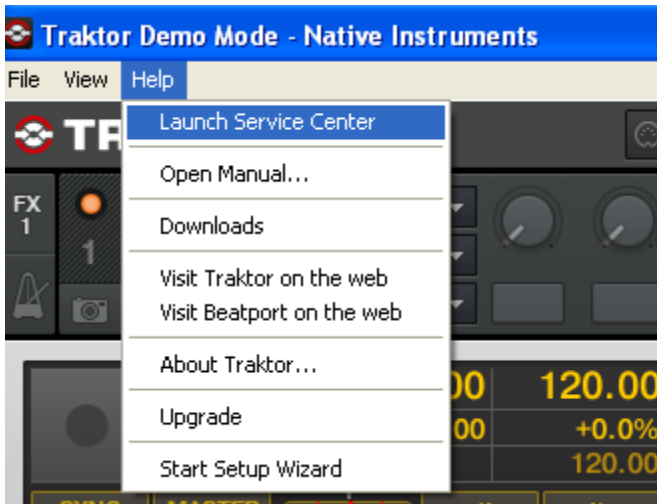


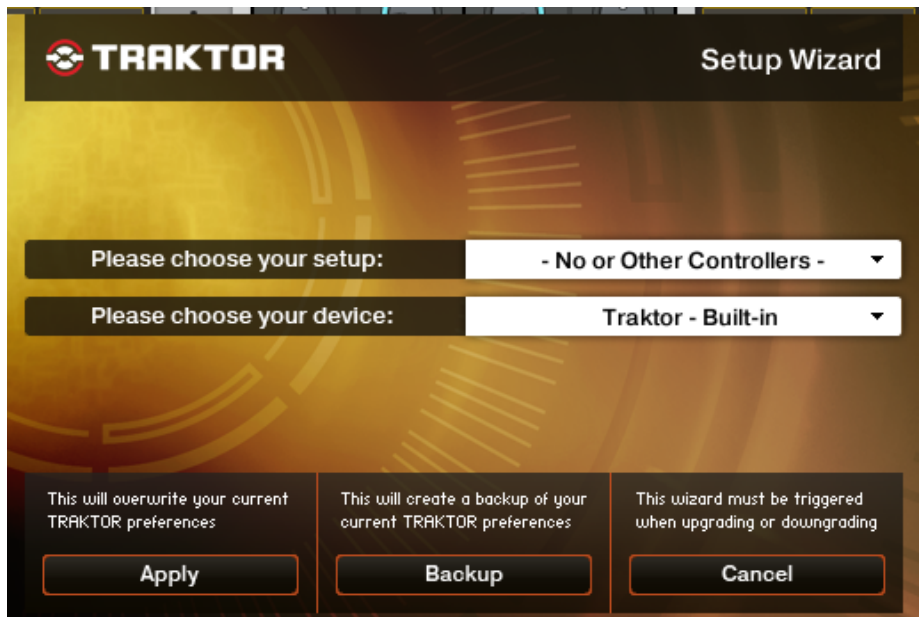
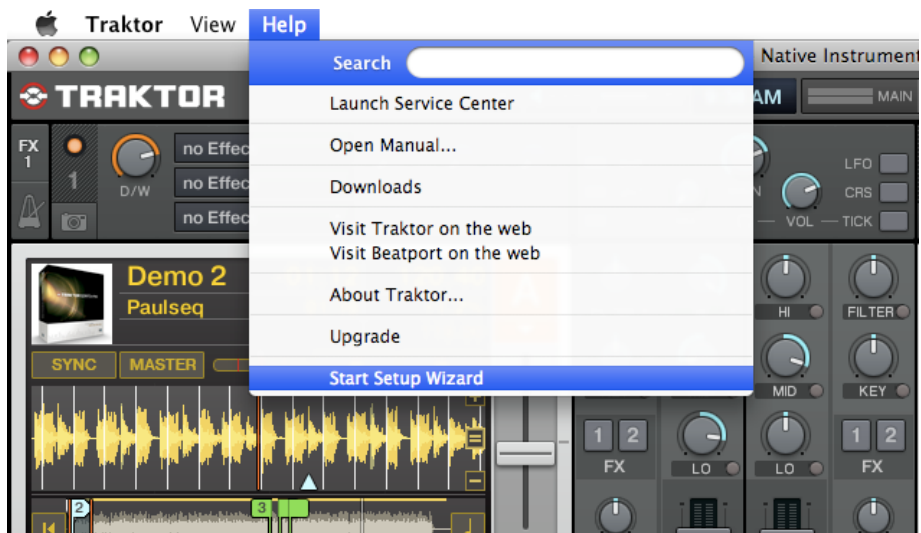
## Setting Up the Total Control and DJ|iO with Traktor LE

1. Before you begin, make sure you have the latest version of Traktor LE installed.

Launch Traktor LE, then go to **Help > Launch Service Center**. Select the **Updates** tab and make sure you download any **Traktor** updates you see.



- Next, in Traktor LE, go to **Help > Start Setup Wizard**. In the window that opens, you will see **setup** and **device** drop down menus.



3. Under **setup** choose **Numark**.



4. Under **device** choose **Total Control LE**. Then click **Apply**. (if **Total Control LE** is not an available choice, then choose **Total Control**).



Your Total Control USB MIDI controller is now configured to control Traktor LE! If you are using the Numark DJ|iO as your computer audio interface, proceed with the steps below to configure it with Traktor LE.

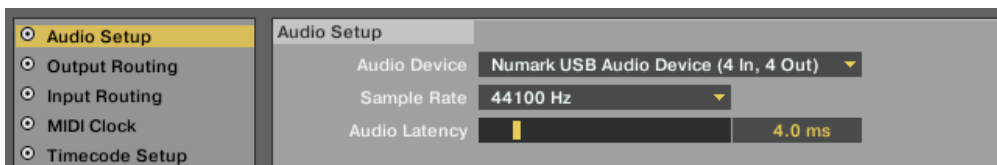
5. To configure an audio device with Traktor LE, go into the **Preferences** menu.

- On Windows, go to **File > Preferences**.
- On Macintosh, go to **Traktor > Preferences**.



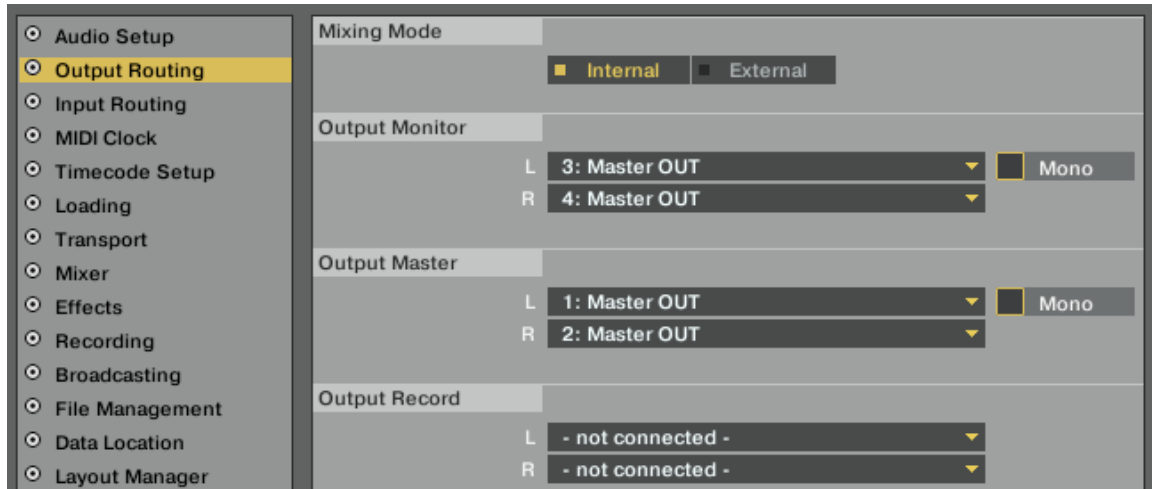
6. Next click on **Audio Setup**. If you are using the Numark DJiO as your computer audio interface, proceed with the steps below to configure it with Traktor LE.

- On Windows, make sure that **Numark USB Audio Device (ASIO)** is selected.
- On a Macintosh, make sure you choose **Numark USB Audio Device** in this same drop down.



7. Next, click on **Output Routing** on the left-hand side of the window. Here you will have the option to route your audio in any fashion you'd like. The **Numatk DJjiO** has 4 outputs.
- On PC you will see **Numark USB Audio 1, 2, 3, and 4.**
  - When on the Mac you'll see **Master OUT 1, 2, 3 and 4.**

The recommended configuration is displayed below:



You should be set up and ready to go. Remember to enable cue by pressing the Cue button in the top left/right of the controller.