

N-TUNE ARTIST SERIES ON-BOARD TUNER INSTALLATION INSTRUCTIONS

—•••—
TRUE BYPASS CHROMATIC TUNING
AT YOUR FINGER TIPS





PLEASE READ BEFORE STARTING INSTALLATION

The N-Tune™ “Artist Series” chromatic tuner assembly replaces the 500k volume control and toggle switch of your electric guitar or bass. It can be installed by experienced guitar technicians in most electric guitars or basses without the need for routing, woodworking or other modifications.

EXTREMELY IMPORTANT! Before starting work on your guitar or bass, be sure to make a diagram of the wiring scheme of your guitar! Make note of what wires are going where and what color they are. This can save you hours of troubleshooting time should something be connected incorrectly.

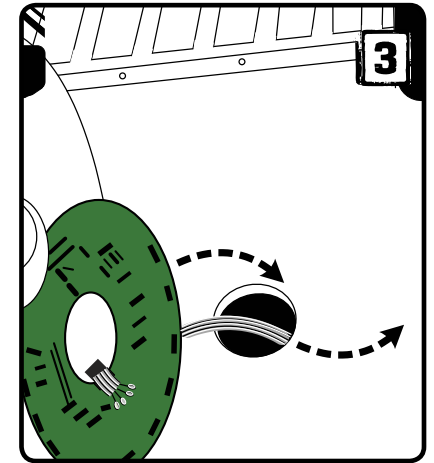
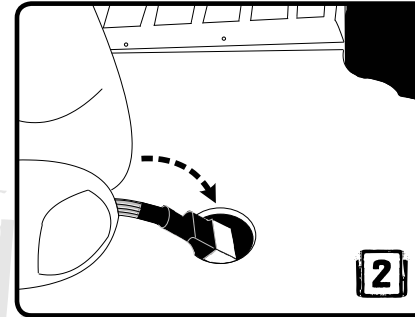
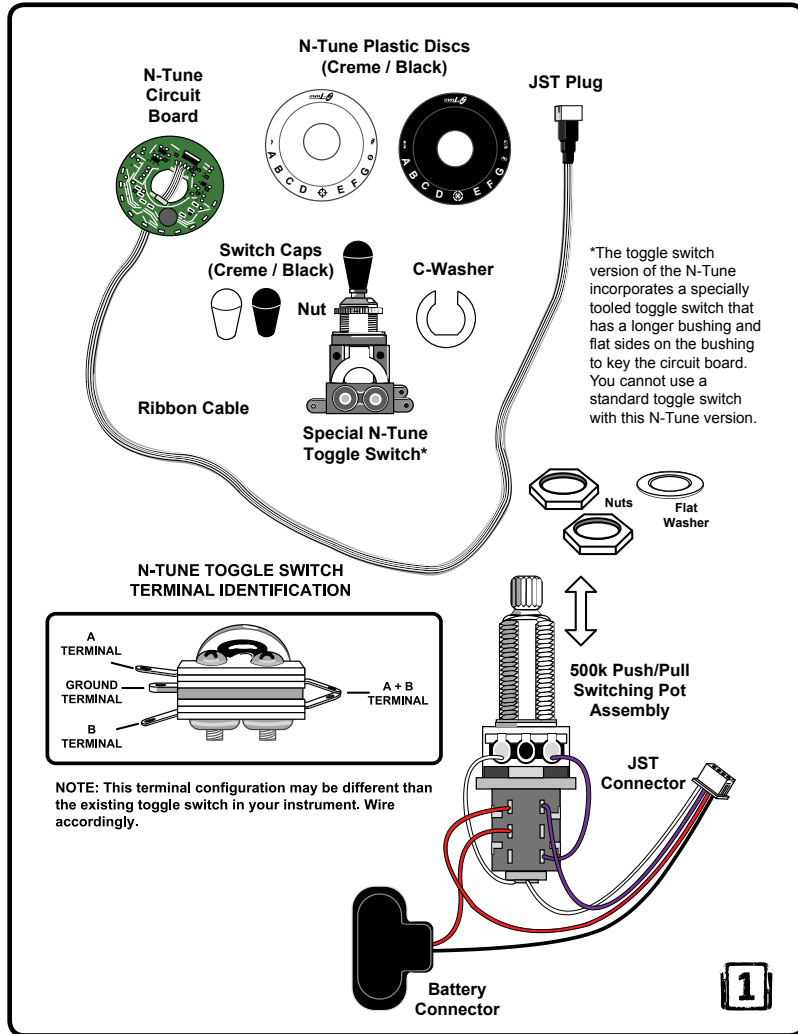
The JST connector on the end of the N-Tune circuit board’s ribbon cable is 0.296" (7.54mm) in width. Before attempting to install the N-Tune Artist Series tuner, make sure the holes between the toggle switch cavity and the pickup cavities, on through to the control cavity of the instrument are wide enough to accommodate this connector.

WARNING: Installation of the N-Tune system may void the manufacturer’s warranty on your guitar. Check with your guitar’s manufacturer or the dealer from where the guitar was purchased for details. It is highly recommended that only a qualified guitar technician install the N-Tune.

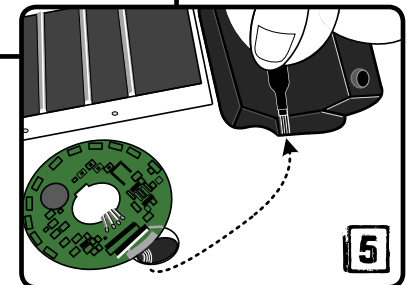
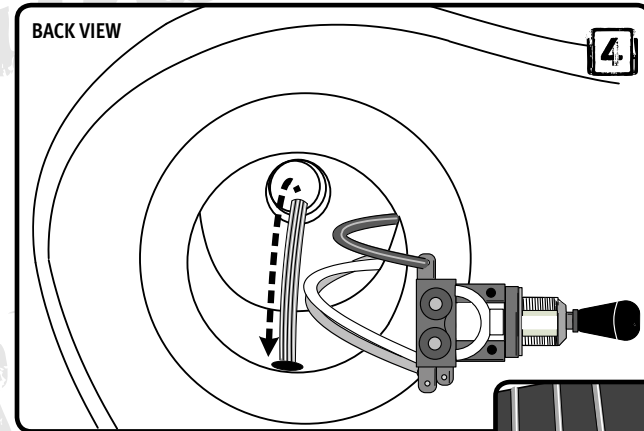
Note: If your existing volume pot has extra features that make it do more than just control the volume, then these extra features will not work with the N-Tune installed in this location. There are options available to install the N-Tune in place of a tone pot. **Contact:** techsupport@ntune.com for details.

Tools required: Soldering iron, solder, solder sucker or solder wick, pliers, wire cutters, wire stripper, a screwdriver selection and nut drivers.

N-TUNE™ TOGGLE SWITCH MODEL INSTALLATION INSTRUCTIONS



FIGURES 2 & 3:
Feed the PCB's ribbon cable through the switch hole.



FIGURES 4 & 5:
Feed the ribbon cable through rear of the toggle switch cavity into the hole towards the neck pickup cavity.

FIGURE 1: Wire the toggle switch as normal for your guitar model.

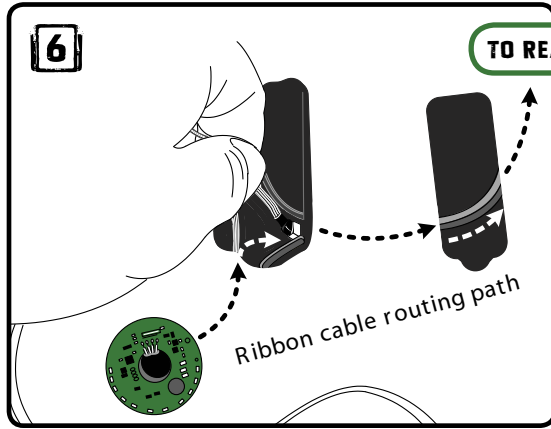


FIGURE 6:
Continue routing ribbon cable through the bridge pickup cavity to the control cavity.

FIGURE 8:
Put the toggle switch up through the hole and place the PCB down over it, routing the ribbon cable carefully through the gap in the C-Washer.

Be careful to orient the PCB and ribbon cable so the LEDs face the player.

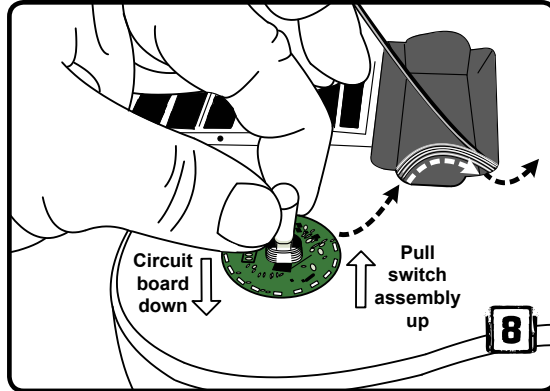


FIGURE 9:
Place the plastic N-Tune disc over the toggle switch. Be careful to line it up with the LEDs on the PCB.

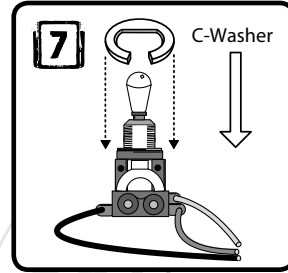
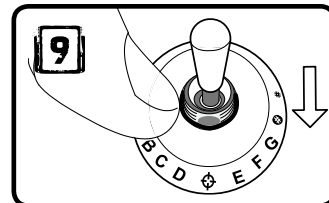


FIGURE 7:
Place the C-Washer on the toggle switch

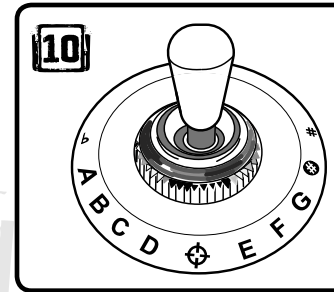
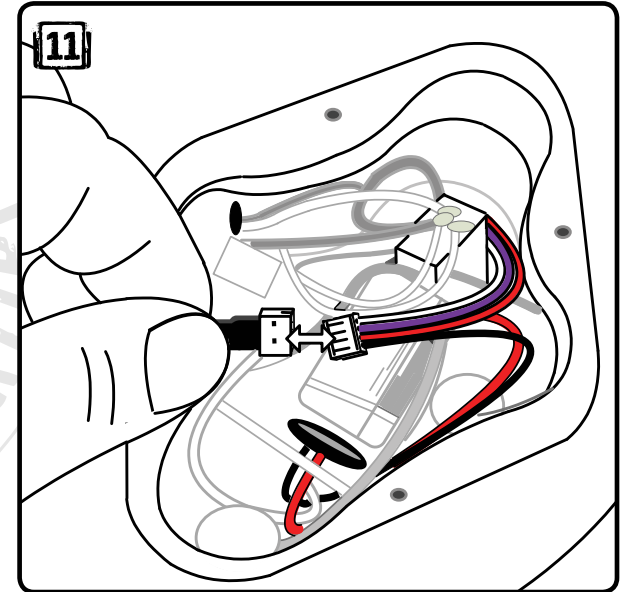
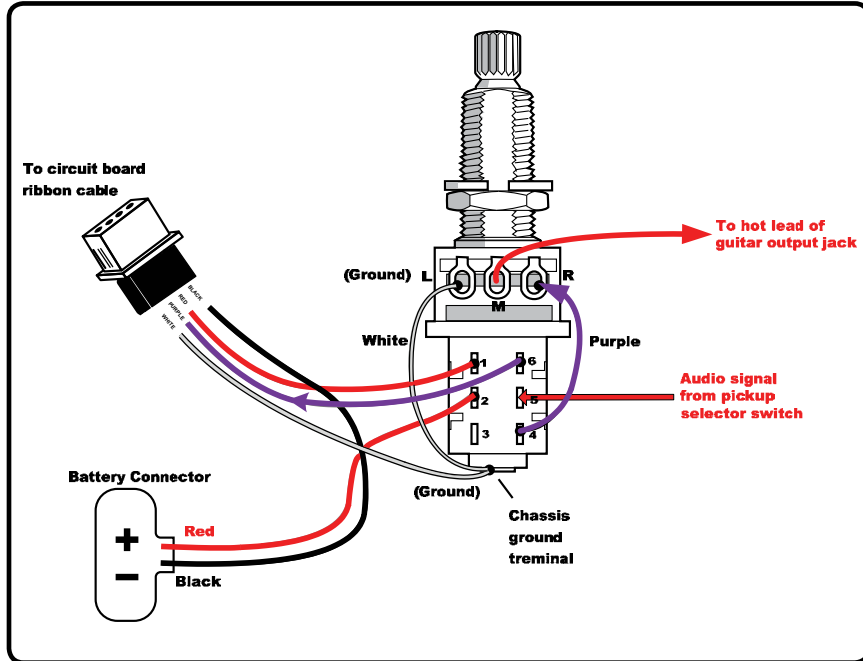


FIGURE 10:
Place the nut on the toggle switch threads and tighten at the desired angle.

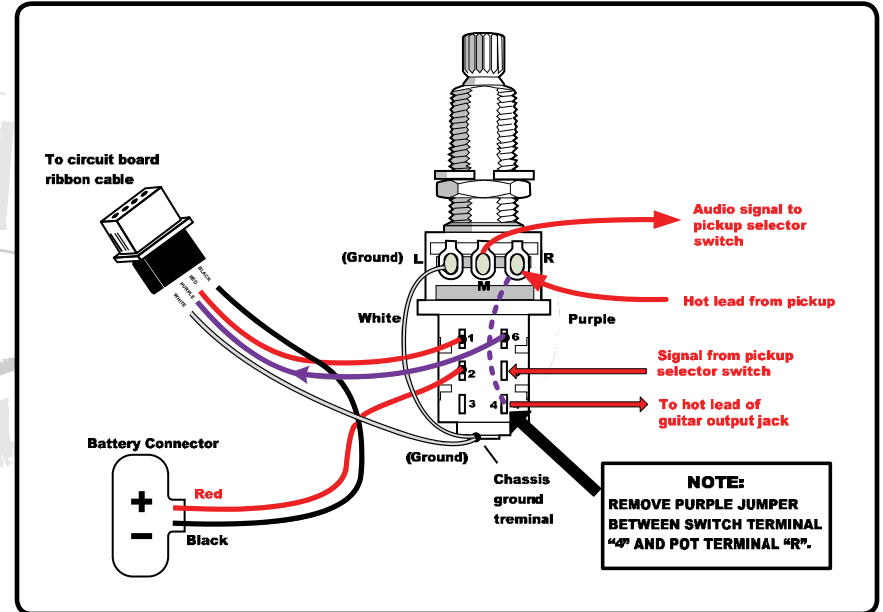
FIGURE 11:
Connect the JST connectors together, connect the battery and test the N-Tune switch. The LEDs on the circuit board should dance when the pot shaft is pulled up. Test the tuning functionality when guitar has strings on it.



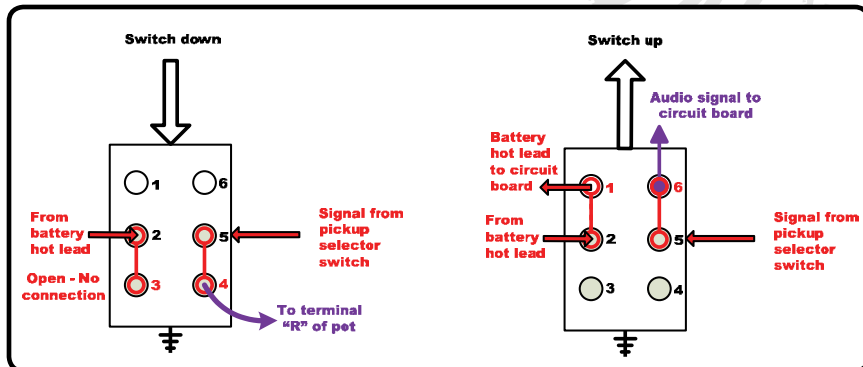
N-TUNE STANDARD WIRING CONFIGURATION



N-TUNE OPTIONAL WIRING CONFIGURATION FOR FULL OUTPUT MUTING WITH DUAL HUMBUCKER PICKUPS

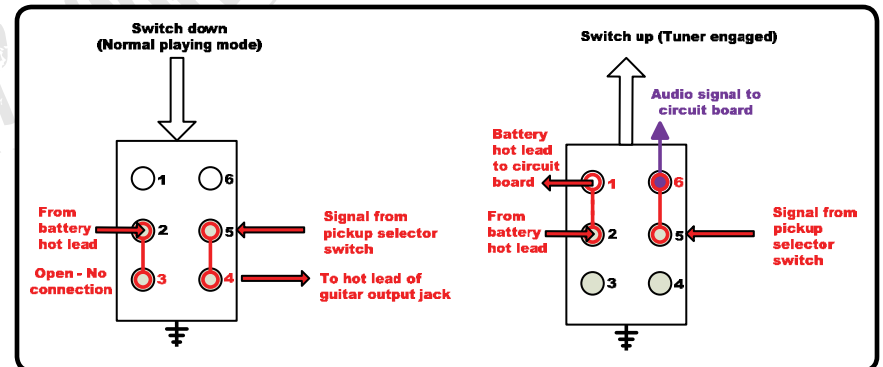


Switching Details:



NOTE: In this configuration, the volume control must be turned up during tuning.

Switching Details:





Warranty and Repair: If you suspect that there is something wrong with your tuner, please contact us at:
techsupport@ntune.com

For warranty details, contact your local distributor.

N-Tune is a trademark of Zero Crossing, Inc. All other brands are trademarks or registered trademarks of their respective holders and are hereby acknowledged.

© 2009 Zero Crossing, Inc.

All Rights Reserved.

www.ntune.com

Designed by guitar playing geeks in Seattle, WA