

This guide is designed to quickly get you started using the FW-1884. If you have any problems or questions during setup, the Owner's Manual covers this in much more detail.

## Installing the Drivers – Windows

1. Plug the included FireWire cable into the FW-1884's FireWire port and your computer's FireWire port. Don't turn on the power yet.
2. Insert the FW-1884 Software and Documentation CD-ROM into your computer's CD-ROM drive. The installer will automatically launch. Click OK on the screen. If the installer asks you where it should look for drivers, select the installation CD-ROM. Follow the on screen instructions.
3. Restart your computer. When it has restarted, turn on the FW-1884 using the power switch on the back right side of the unit.
4. The New Hardware Wizard will launch when it sees your new hardware. Click "Next" on the first screen. If you see any messages telling you that the product hasn't passed Windows Logo Testing, click "Continue Anyway." After the first driver is installed, the New Hardware Wizard will find new hardware and walk you through the installation process two more times.
5. Open the "DAW Plugins" folder. Find the ASIO plug-in for your DAW recording software. If none exists, check the TASCAM website for a new driver.

## Installing the Drivers – Mac

1. Insert the FW-1884 Software and Documentation CD-ROM into your computer's CD-ROM drive. Follow the instructions below for your computer platform and then move on to step 2.
  - a. **Mac OS X Users:** Double-click the Mac OS X installer file on the installer CD, ending with the suffix ".dmg". Disk Copy should automatically mount the disk image. Select this new "disk" and double click the FW-1884 Installer. Enter your administrator's password and then follow the instructions.
  - b. **Mac OS 9 Users:** If OMS is not installed on your Mac, run the OMS 2.3.8 Installer first. Next, select the "Driver Installers" folder on the CD and open the "Mac OS 9" folder inside of that. Double click the FW-1884 Installer and then follow the instructions. When you're finished, launch OMS Setup and follow the instructions.
2. Plug the FireWire cable into the FW-1884's FireWire port and your computer's FireWire port.
3. Open the "DAW Plugins" folder. Find the plug-in for your DAW recording software. If none exists, check the TASCAM website for a new driver.

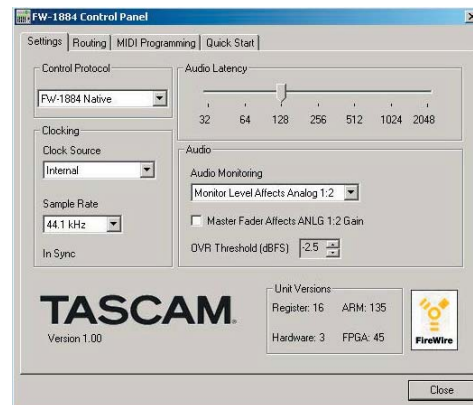
## Using the Control Panel

1. First, install the FW-1884 software as explained in the previous section.
2. After the software has been installed and your computer restarts, you should see that the “FireWire” light on the top right corner of the FW-1884 is on. (If it isn’t, you may need to restart again or check your connections.)
3. Press the “Control Panel” button on the left side of the unit to launch the FW-1884 Manager application.
4. When the FW-1884 Control Panel opens, it will default to the Settings tab (see below). Set the Control Protocol to either FW-1884 Native, HUI Emulation or Mackie Control Emulation, depending on the needs of your software.
5. The Clock Source and Sample Rate can be set from this control panel or from the front panel of the FW-1884.
6. The Audio Latency should be raised if you hear clicks in the audio playback, especially on machines with relatively slow processors.
7. The Audio Monitoring control selects if the Monitor knob on the FW-1884 front panel changes the output level of analog outputs 1 and 2 or 1 through 8. Use the 1:2 setting if you’re monitoring in Stereo, use the 1:8 setting if you’re monitoring in surround. In most DAW software, you should leave the “Master Fader Affects ANLG 1:2” box unchecked, so that you don’t attenuate the master level twice.
8. Select the Routing tab to change the functionality of the digital inputs and outputs.
9. *Mac OS X:* Click on the “Core Audio” tab to select how many inputs and outputs you’ll have available to your audio applications. On slower systems, such as a Mac with a G3 processor, you may need to select less channels for the audio to record and playback without glitches.  
*Mac OS 9:* Select which pair of inputs & outputs Sound Manager will use for stereo I/O in the Settings tab.

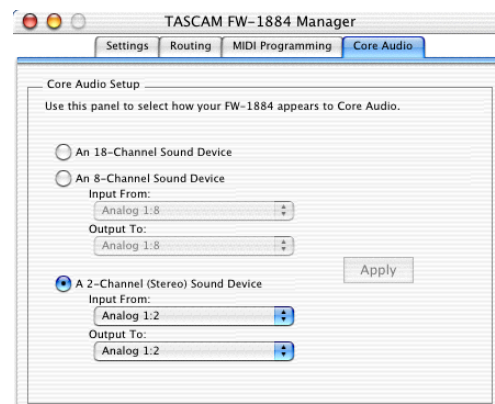
*Windows:* Select which pair of inputs and outputs Windows will use for stereo I/O in the Sound and Audio Devices control panel.

10. To use the FW-1884 with your DAW software, you’ll need to open your DAW and choose the “Audio Setup...” or similar menu item. Set the audio device to FW-1884. There should also be menus for adding a MIDI interface and Control Surface. Since every DAW program and sequencer handles this differently, check the Software Application Notes found on your Installation CD.

Refer to the FW-1884 Setup Guide and User’s Manual for more information on setting up the FW-1884 in your studio.



The FW-1884 Settings tab in Windows XP



The FW-1884 Core Audio tab in Mac OS X