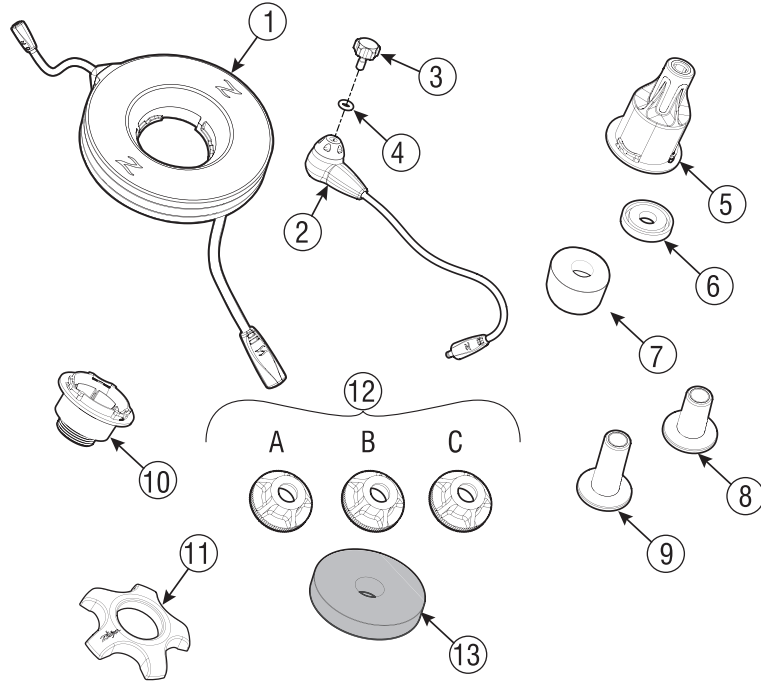




**DIRECT SOURCE PICKUP**  
**QUICK START GUIDE**  
**VERSION 1.0**

# DIRECT SOURCE PICKUP

DIRECT SOURCE PICKUP/DIRECT SOURCE PICKUP/DIRECT SOURCE PICKUP/  
DIRECT SOURCE PICKUP/DIRECT SOURCE PICKUP



# PART LIST

PART LIST/PART LIST/PART LIST/PART LIST/PART LIST/

## CONTENTS

- ① PreAmp/Light Module
- ② Sensor
- ③ Thumb Screw
- ④ O-Ring
- ⑤ Cymbal Tilter Adapter
- ⑥ Cymbal Tilter Adapter Spacer (optional)
- ⑦ Cymbal Tilter Anti-Spin Pad
- ⑧ Cymbal Tilter Sleeve - Short
- ⑨ Cymbal Tilter Sleeve - Long
- ⑩ HiHat Stand Adaptor
- ⑪ HiHat Cymbal Adaptor Nut
- ⑫ HiHat Clutch Nuts (optional)  
A 7/16-20MM B m12-1.25MM C m10-1.0MM
- ⑬ HiHat Stand Cymbal Cup Washer
- ⑭ Zildjian/Cympad Washer Set (optional)

## ⑭ ITEM #G16AE017

- (2) Thin Cymbal Washers



- (2) Thick Cymbal Washers



- (2) HiHat Clutch Washers



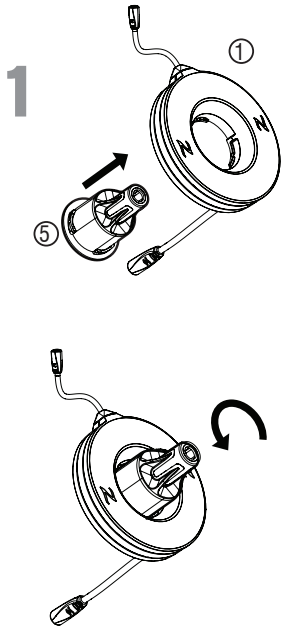
- (1) HiHat Cup Washers



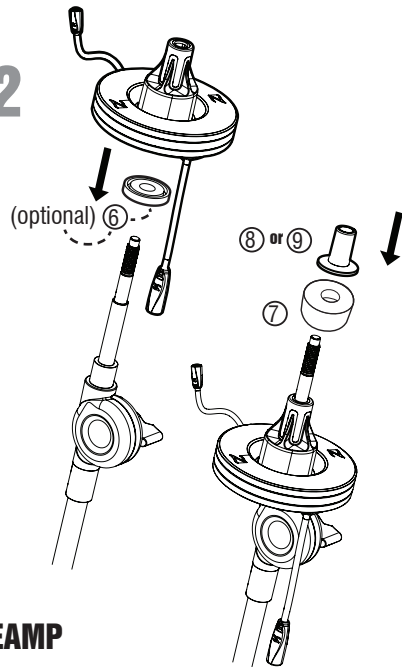
NOTE: #G16AE017 Zildjian/Cympad Washer Set included with each Gen16 Boxset

# MOUNTING/CYMBAL

MOUNTING/CYMBAL/MOUNTING/CYMBAL/MOUNTING/CYMBAL/  
MOUNTING/CYMBAL/MOUNTING/CYMBAL/

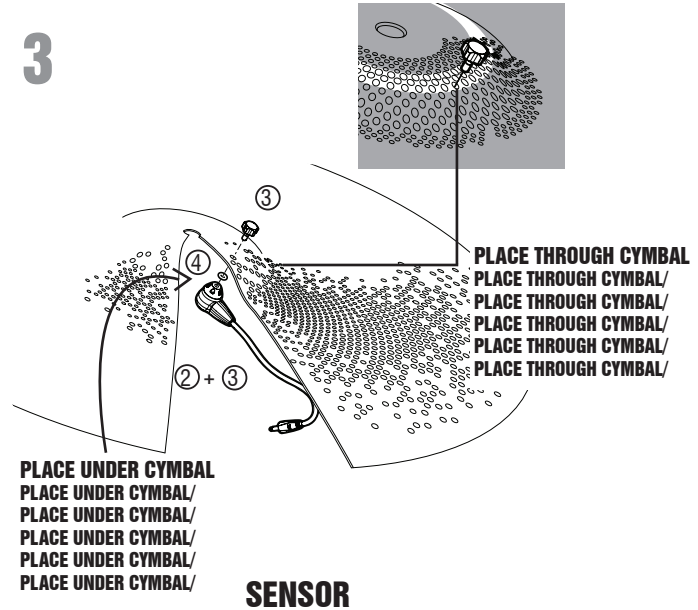


2



**PREAMP**

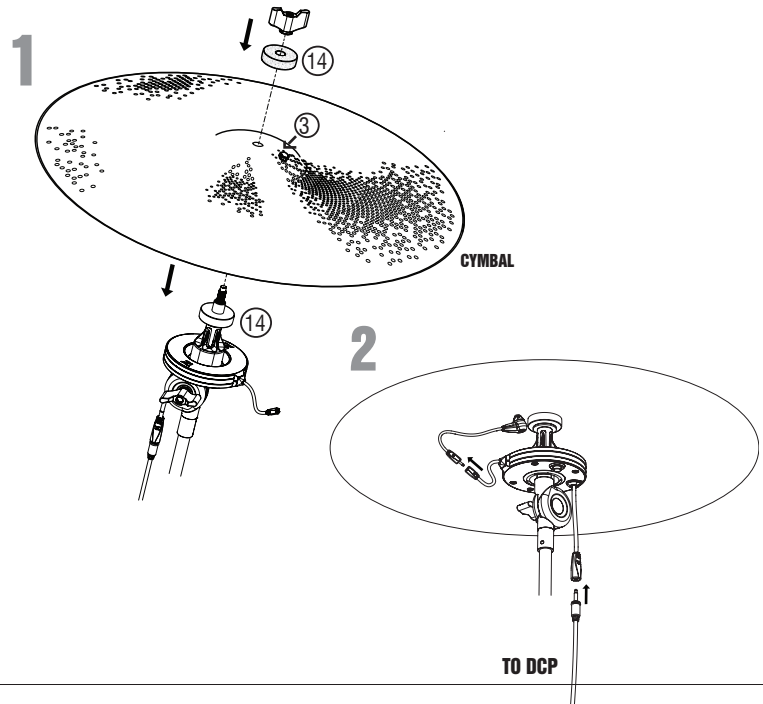
3



**SENSOR**

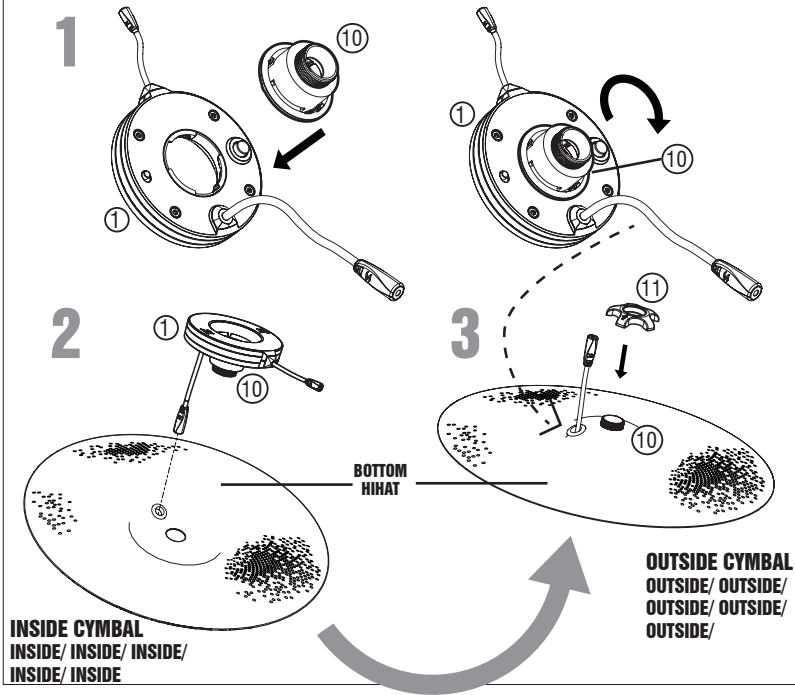
# PLACEMENT/CONNECTION

PLACEMENT/CONNECTION/PLACEMENT/CONNECTION/PLACEMENT/CONNECTION/  
PLACEMENT/CONNECTION/PLACEMENT/CONNECTION/



# MOUNTING/HIHAT

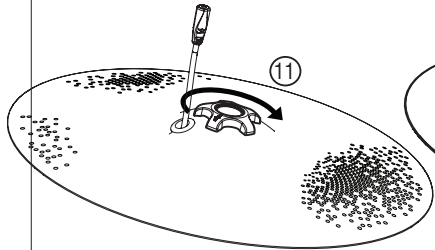
MOUNTING/HIHAT/MOUNTING/HIHAT/MOUNTING/HIHAT/  
MOUNTING/HIHAT/MOUNTING/HIHAT/



# MOUNTING HIHAT

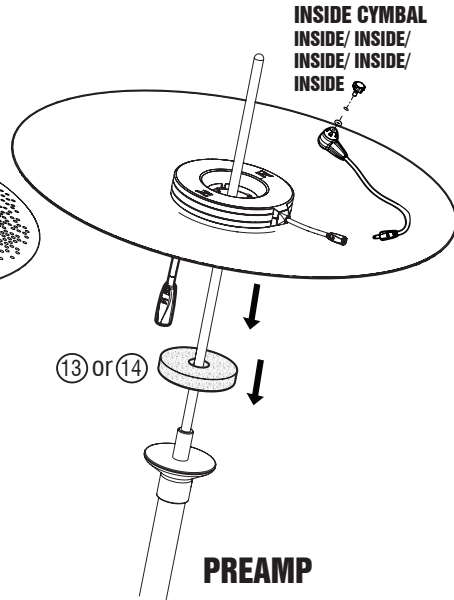
MOUNTING HIHAT/MOUNTING HIHAT/MOUNTING HIHAT/  
MOUNTING HIHAT/MOUNTING HIHAT/

4

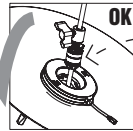
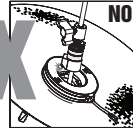


**OUTSIDE CYMBAL**  
OUTSIDE/ OUTSIDE/  
OUTSIDE/ OUTSIDE/  
OUTSIDE/

5

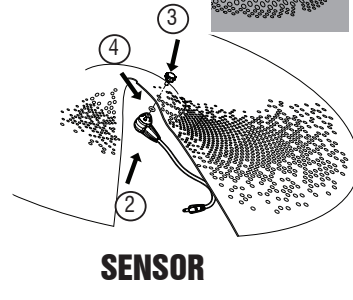


1

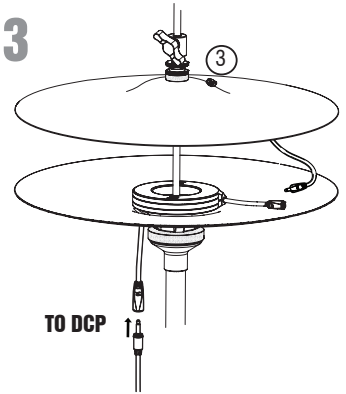


**CLUTCH NUT**  
CLUTCH NUT/CLUTCH NUT/  
CLUTCH NUT/CLUTCH NUT/  
CLUTCH NUT/

2



3



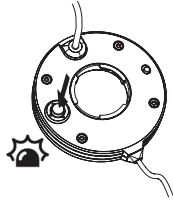
## CLUTCH NUTS

<b>A</b>	DW, Gibraltar, Ludwig, PDP, Tama
<b>B</b>	Yamaha
<b>C</b>	Gen-16, Pearl, Mapex

# LIGHT CONTROLS

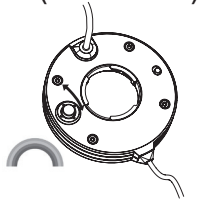
LIGHT CONTROLS/LIGHT CONTROLS/LIGHT CONTROLS/  
LIGHT CONTROLS/LIGHT CONTROLS/

## PREAMP/LED (JOYSTICK)



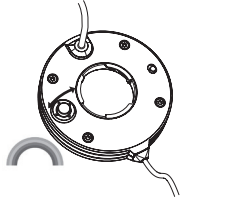
### LIGHT PATTERN

LIGHT PATTERN/  
LIGHT PATTERN/  
LIGHT PATTERN/  
LIGHT PATTERN/  
LIGHT PATTERN/  
LIGHT PATTERN/



### LIGHT COLOR

LIGHT COLOR/  
LIGHT COLOR/  
LIGHT COLOR/  
LIGHT COLOR/  
LIGHT COLOR/



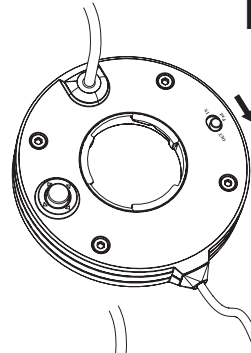
### STRIKE COLOR

STRIKE COLOR/  
STRIKE COLOR/  
STRIKE COLOR/  
STRIKE COLOR/  
STRIKE COLOR/

# OUTPUT ATTENUATOR

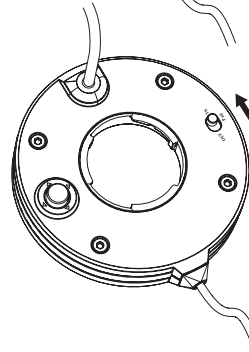
OUTPUT ATTENUATOR/OUTPUT ATTENUATOR/OUTPUT ATTENUATOR/  
OUTPUT ATTENUATOR/OUTPUT ATTENUATOR/

## PREAMP/AUDIO



### OUT STANDARD GAIN

STANDARD GAIN/  
STANDARD GAIN/  
STANDARD GAIN/  
STANDARD GAIN/  
STANDARD GAIN/

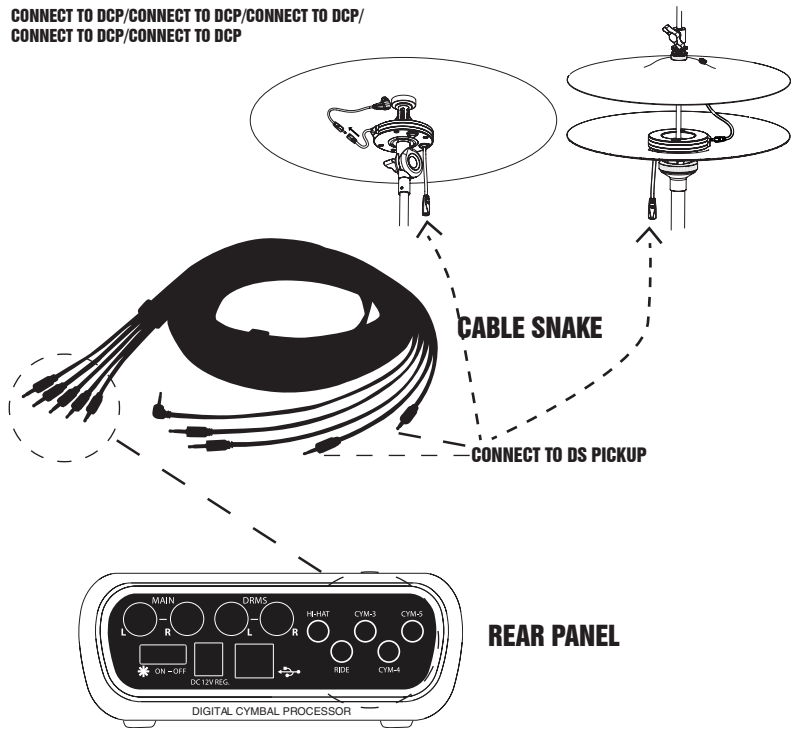


### IN REDUCED GAIN

REDUCED GAIN/REDUCED  
GAIN/REDUCED GAIN/  
REDUCED GAIN/REDUCED  
GAIN/

# CONNECT TO DCP

CONNECT TO DCP/CONNECT TO DCP/CONNECT TO DCP/  
CONNECT TO DCP/CONNECT TO DCP



# REGISTRATION/SUPPORT

REGISTRATION/SUPPORT/REGISTRATION/SUPPORT/REGISTRATION/SUPPORT/  
REGISTRATION/SUPPORT/REGISTRATION/SUPPORT/

[www.gen-16.com/Support/Downloads](http://www.gen-16.com/Support/Downloads)



ACCESS TOOL 3.x



DCP 2.x  
DSP 1.5x



## ALSO FROM ZILDJIAN

ALSO FROM ZILDJIAN/ALSO FROM ZILDJIAN/ALSO FROM ZILDJIAN/  
ALSO FROM ZILDJIAN/ALSO FROM ZILDJIAN/

# // SYSTEM AE RACK

Inspired by aerospace designs the AE RACK is perfect for both acoustic and electric percussion setups providing a clean, easily transportable sturdy hardware foundation.



PICTURED: G16AEDR2/Tall Rack

## ACOUSTIC

The "TALL" rack can be used on kits with a 24" (or smaller) bass drum while the "SHORT" rack is perfect for kits with a 20" (or smaller) bass drum allowing microphone cables to be nested in the cable channel.



PICTURED: G16AEDR1/Short Rack

## ELECTRIC

The "SHORT" is a great rack upgrade for any edrum kit! The AE RACK helps to prevent cross triggering while its cable channel allows all cables to be hidden.

Visit [Gen-16.com](http://Gen-16.com) for more information