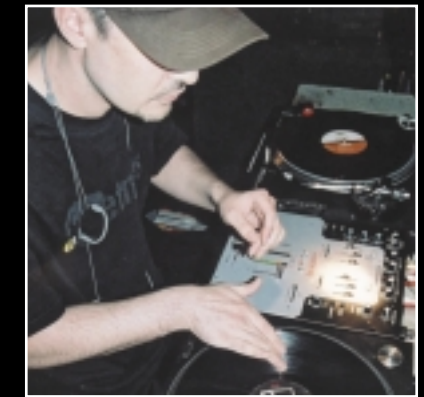
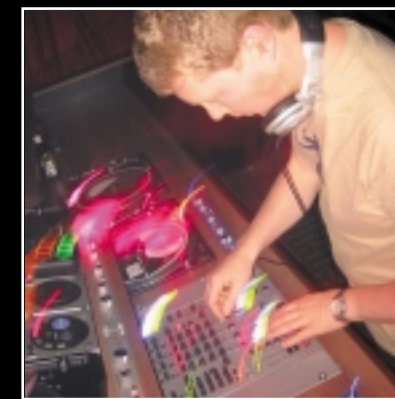


TECHNICAL SPECIFICATIONS

	XONE:02	XONE:32	XONE:62	XONE:92	XONE:464	XONE:V6/S6	XONE:VF-1
Operating Levels							
Main Outputs	0dBu Headroom +20dB	0dBu Headroom +20dB	+4dBu Headroom +22dB	+4dBu Headroom +20dB	+4dBu Headroom +22dB	+4dBu Headroom +24dB	+4dBu Headroom +22dB
Booth Output	0dBu Headroom +20dB	-2dBu Headroom +22dB	-2dBu Headroom +22dB	-2dBu Headroom +22dB	-2dBu Headroom +22dB	+4dBu Headroom +24dB	N/A
Effect Send output	0dBu Headroom +21dB	-2dBu Headroom +22dB	-2dBu Headroom +22dB	+4dBu Headroom +22dB	-2dBu Headroom +22dB	N/A	N/A
Maximum output	+23dBu	+20dBu	+26dBu	+26dBu	+26dBu	+28dBu	+26dBu
Mic Pre-Amp Sensitivity	-50 to -10dBu	-45 to -15dBu	-45 to -20dBu	-45 to -10dBu	-58 to +8dBu	-58 to -5dBu	N/A
RIAA input sensitivity	7-140mV 47K/330pF	7-100mV 47K/330pF	7-100mV 47K/330pF	4-180mV 47K/330pF	7-100mV 47K/330pF	7-100mV 47K/330pF	N/A
Stereo Line input sensitivity	-15 to +22dBu	-15 to +22dBu	-10 to +8dBu	-20 to +10dBu	-10 to +8dBu	-10 to +20dBu	
Frequency Response (20Hz-30KHz)							
Mic to Main output (+40 dB)	+0/-2dB	+0/-12dB (lo-cut filter)	+0/-0.5dB	+0/-10dB (low cut filter)	+0/-1dB	+0/-1dB	N/A
Line to Main output (0dB)	+0/-2dB	+0/-1dB	+0/-0.5dB	+/-0.5dB	+0/-0.5dB	+/-0dB (Flat)	+0/-0.5dB
Distortion at 1KHz +0VU out							
THD + Noise (mic in +40dB gain)	<0.04%	<0.02%	<0.02%	<0.02%	<0.02%	<0.02%	<0.002% (Filter OFF)
THD + Noise (line in 0dB gain)	<0.04%	<0.04%	<0.008% (crossfader not routed)	<0.03%	<0.008% (crossfader not routed)	<0.02%	N/A
Common Mode Rejection @1KHz							
Mic Input +40dB gain	>-76dB	>-50dB	>-76dB	>-76dB	>-72dB	>-90dB	
Crosstalk @1KHz							
Adjacent Channel	<-90dB	<-90dB	<-90dB	<-90dB	<-90dB	<-100dB	
Mute Shutoff	<-95dB (Transform)	N/A	N/A	N/A	<-80dB	N/A	
Fader Shutoff	<-85dB	<-82dB	<-80dB	<-95dB	<-80dB	<-95dB	
Noise Performance (22Hz-22KHz unweighted)							
Mic EIN with 150ohm source	-129dB	-126dB	-126dB	-126dB	-128dB	-128dB	
Residual output noise - main outputs	<-88dBu	<-100dBu	<-94dBu	<-95dBu	<-90dBu	<-98dBu	<-100dBu (Filter OFF) <-85dBu/89dBu S/N (Filter ON)
Main Mix noise	<-81dBu (81dB S/N)	<-84dBu (84dB S/N)	<-80dBu (84dB S/N)	<-80dBu (84dB S/N)	<-80dBu (84dB S/N)	<-90dBu (94dB S/N)	
Connection Impedances							
Mic Inputs	<2K ohms	<2K5 ohms	<2K ohms	<2K ohms	<2K ohms	<2K ohms	
Line Inputs	>20K ohms	>10K ohms	>15K ohms	>15K ohms	>10K ohms	>10K ohms	>9K ohms
Outputs	<47 ohms	<47 ohms	<47 ohms	<47 ohms	<47 ohms XLR 68 ohms jack	<100 ohms	<50 ohms
Record out		340 ohms +15dBu max	400 ohms +15dBu max	600ohms +15dBu max	600ohms +15dBu max	-10dBv 410 ohms	
Equalisation							
Gain (each band) Stereo EQ	+6dB/-26dB 12dB/oct 3 Band	+6dB/-26dB 3 Band	+6dB/-26dB 4 Band	+6dB/-inf(LF/HF) +6dB/-30(MF) 12dB/oct 4 Band	+6dB/-26dB 4 Band	+/-6dB	
Gain (each band) Mono (mic) EQ	+/- 12dB	+/- 12dB	+/-15dB	+/-15dB	+/-15dB semi parametric	+/-6dB	
Filter	N/A	100Hz-20KHz VCF with LFO	100Hz-20KHz Dual VCF	30Hz-20KHz 2x independent VCF + LFO	100Hz-20KHz Dual VCF	20Hz-600Hz swept high-pass per channel	
Metering							
Reading referred to Main outputs	0VU=0dBu (12 pt)	0VU=0dBu (3 pt ch, 12 pt master)	0VU=0dBu (3 pt ch, 12 pt master)	0VU=+4dBu (9 pt ch & master)	0VU=+4dBu (3 pt ch, 12 pt master)	0VU=+4dBu (8 pt ch, VU masters)	
Peak indication threshold	8dB before clipping	12dB before clipping	6dB before clipping	6dB before clipping	6dB before clipping	14dB before clipping	
System							
Power supply	Internal Universal input	Internal Universal input	Internal Universal input	Internal Universal input	Internal Universal input	MPS6/MPS7 Hybrid external	Internal Universal input
Power Consumption	30W Max 10W nominal	30W Max 10W nominal	30W Max 15W nominal	35W Max 18W nominal	30W Max 20W nominal	75W Max	30W Max
Connections							
XLR Inputs	Female	Pin2 = +ve polarity	Pin3 = -ve polarity	Pin1 = ground	Chassis = chassis		
XLR Outputs	Male	Pin2 = +ve polarity	Pin3 = -ve polarity	Pin1 = ground	Chassis = chassis		
1/4" TRS Jack, Balanced Input, Insert Return	Socket	Tip = +ve polarity	Ring = -ve polarity	sleeve = ground/chassis			
1/4" TRS Jack, Balanced Output, Insert Send	Socket	Tip = +ve polarity	Ring = -ve polarity	sleeve = ground/chassis			
1/4" TRS Jack, Insert (unbalanced)	Socket	Tip = send signal	Ring = return signal	sleeve = ground/chassis			
1/4" TRS Jack, Unbalanced Input	Socket	Tip = signal	sleeve = ground/chassis				
RCA Phono	Socket	Tip = signal		Outer = ground/chassis			
MIDI			5 pin DIN				5 pin DIN



Users by being shown do not necessarily imply endorsement