



# USER GUIDE V1.0

© 2004 Focusrite Audio Engineering Ltd. Disclaimer: FOCUSRITE, the FF Logo, LIQUID CHANNEL, LIQUID TECHNOLOGY, LIQUIDCONTROL, EVERYONE NEEDS LIQUID, and the LIQUID CHANNEL Logo are trademarks of Focusrite Audio Engineering Ltd. DYNAMIC CONVOLUTION is a trademark of Sintefex. All other product names, trademarks, and trade names are the properties of their respective owners, which are in no way associated or affiliated with Focusrite or its LIQUID CHANNEL product and which have not endorsed Focusrite's LIQUID CHANNEL product. These other product names, trademarks, and trade names owned by other companies are used solely to identify the third-party products whose sonic behavior was studied for the LIQUID CHANNEL product. The Liquid Channel product was developed using the patented process of Dynamic Convolution, which uses actual measured examples of the sonic impact of original units upon an audio stream to approximate the performance of the original product studied. The result of this process is subjective and may not be perceived by a user as producing the same effects as the original products studied.

## Contents

---

Introduction .....	2
System Requirements .....	2
Installation (Mac) .....	2
Installation (Windows) .....	2
Using multiple units .....	3
The LiquidControl™ interface .....	4
LiquidChannel Menu.....	5
Pre-amp Menu .....	6
Program Menu.....	7
Compressor Menu .....	8
Help Menu.....	9
Troubleshooting.....	9

## Introduction

---

The LiquidControl™ application allows the user to edit Focusrite's Liquid Channel™ remotely, plus load, save and archive the pre-amp and compressor replicas and program memories. The software communicates with The Liquid Channel™ via USB, and allows up to eight units to be controlled.

## System Requirements

---

- Mac: OS X 10.2.8 or above
- PC: Windows XP
- Both platforms: USB port (one per device)
- Liquid Channel™ firmware version 1.0 or higher

## Installation (Mac)

---

- Download the Mac installer from [www.ffliquid.com](http://www.ffliquid.com).
- Double-click on the downloaded file to uncompress the installer.
- Double-click on the DMG file, then simply drag the LiquidControl™ application icon into the Applications folder on your machine.
- Power up the Liquid Channel unit(s) and set up its/their USB ID(s) (see Setup Menu in page 9 of hardware manual).
- Connect a USB cable between your computer and The Liquid Channel™. If using multiple units, each Liquid Channel™ must be connected via a separate USB port or chained together with RCA cables between each Digital Link Bus – see 'Using multiple units' below.
- Run the LiquidControl™ application on your computer.

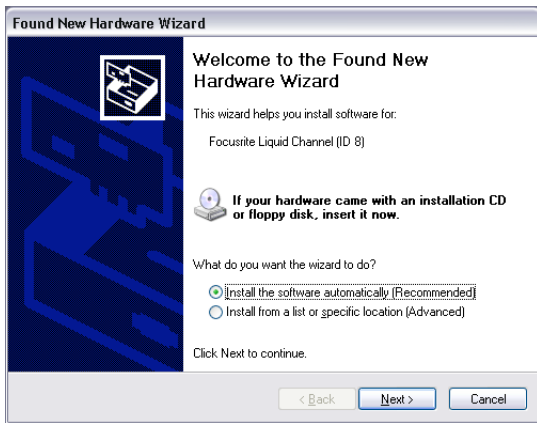
## Installation (Windows)

---

- Download the Windows installer from [www.ffliquid.com](http://www.ffliquid.com).
- Double-click on the downloaded file to uncompress the installer.
- Double-click to launch the installer, and follow the on-screen instructions.
- Power up the Liquid Channel™ unit and set up its USB ID (see Setup Menu in page 9 of hardware manual). In this example we are installing a Liquid Channel™ with ID = 8)
- Connect a USB cable between your computer and The Liquid Channel™. The following will pop up on the taskbar:



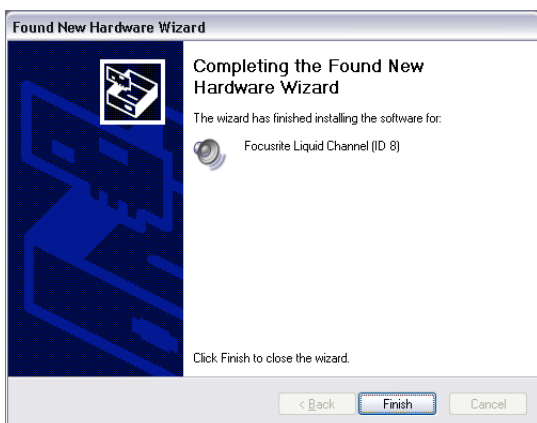
- Click the popup (or wait) and the following appears:



- Leave 'Install the software automatically' selected and click 'Next'. The following warning window will appear:



- Click 'Continue Anyway', and installation will be complete, as shown by the following messages:



- LiquidControl™ can now be used as on the Mac.

**Notes:**

This procedure must be completed every time a new USB ID is used. Once a particular ID has been installed, it will not have to be done for that ID again.

*N.B. The hardware should be powered up before connecting to the computer using USB.*

**Using multiple units**

Using the LiquidControl™ software, you may communicate with up to eight Liquid Channel™ units. Only one unit can be controlled at a time, unless all additional units are slaved to one master (see below).

Each Liquid Channel™ unit must first be assigned a unique USB ID using the Setup menu – refer to The Liquid Channel™ user guide for details. Note that each Liquid Channel™ you wish to control independently requires its own separate USB connection to the computer – a USB hub may be used to add extra USB ports. The unit to be edited is then selected using the LiquidChannel menu or FF logo on the front panel. (Each unit’s USB ID is selected in turn to allow independent control.) See page 5 for more details.

Also note that if you have multiple Liquid Channel™ units connected via the Digital Link Bus connectors for multi-channel uniform operation and you wish to use LiquidControl™ to remotely control the parameter settings, only the ‘master’ unit needs to be connected to the software. Any changes made on the ‘master’ unit will be reflected on the ‘slave’ units connected to it. However, if you wish to upload and download new pre-amp and compressor replicas or program memories to the ‘slave’ units, they must be individually connected to your computer via USB.

## The LiquidControl™ interface



The software interface of LiquidControl™ has been designed to visually match the layout of the controls on the hardware unit. The only differences are:

- The 'Compare' and 'Revert' buttons are not present on the LiquidControl™ interface.
- The 'Data Select' section ('Clear', 'Save' and 'Recall' switches, and data wheel) is not present on the LiquidControl™ interface, as this functionality has been replaced by the various menus and options in LiquidControl™.
- The 'Show Value' button in the EQ section is not present on the LiquidControl™ interface as EQ changes are automatically visible on the interface LCD when editing.

Editing a parameter in LiquidControl™ causes the Liquid Channel™ hardware display to update to reflect the change, and vice versa.

*N.B. If 'Show Value' is activated on the Liquid Channel™ hardware (in order to view the EQ parameter settings on the hardware display), it must be de-activated in order to view any changes to compression settings made using the LiquidControl™ application.*

Use the LiquidControl™ application interface to edit the Liquid Channel™ parameters as follows:

### Encoders

Click and drag up/down or right/left on an encoder to increase/decrease the value of the associated parameter.

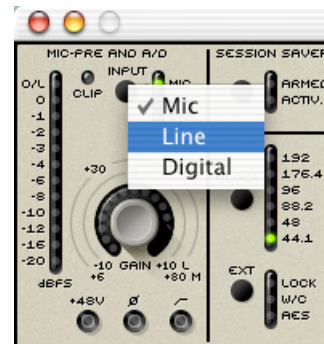
### Buttons

Click on a button to toggle on and off.

### Popup menus

Clicking on FF logo, the 'Program Name' text, the 'Pre-amp Sel.' text or the 'Compressor Sel.' text on the application interface will launch pop-up menus containing the same items as the main LiquidChannel, Program, Pre-amp and Compressor menus respectively (see below for details of the individual menus). To use the popup menus simply click and then select the appropriate function/setting.

The Input, Session Saver, Clock Select and Ext sections are also controlled via pop-up menus. Click to bring up the menu, and select the appropriate setting:



### O/L and Clip indicators

The O/L and Clip indicators work in a similar way to the overload indicators in Digidesign Pro Tools™, i.e. once they have been triggered, they remain lit. Simply click them, or hit the space bar, to turn them off again.

## LiquidChannel Menu

This menu is used to select which Liquid Channel™ unit is to be controlled by the software application.

*N.B. This menu is also accessible from the LiquidControl™ interface as a pop-up menu; simply click on the FF logo.*



### Offline

With Offline selected, the LiquidControl™ application is disconnected from any Liquid Channel™ hardware.

### Device 1 – Device 8

If a Liquid Channel™ unit is connected to the computer via USB and has been assigned a unique USB ID in its Setup menu (refer to Liquid Channel™ hardware user guide page 9 for details), simply select the device with the corresponding ID from the LiquidChannel menu to select that unit for editing. The screen will read ‘syncing to Liquid Channel ID x’. If LiquidControl™ has difficulty finding the Liquid Channel™ hardware, see the Troubleshooting section on page 9 for help.

### Firmware version...

This menu option allows you to check the firmware version of the currently selected Liquid Channel™ unit. To update the firmware, click ‘Yes’. To exit the menu, click ‘No’. New firmware will be available at [www.ffliquid.com](http://www.ffliquid.com)

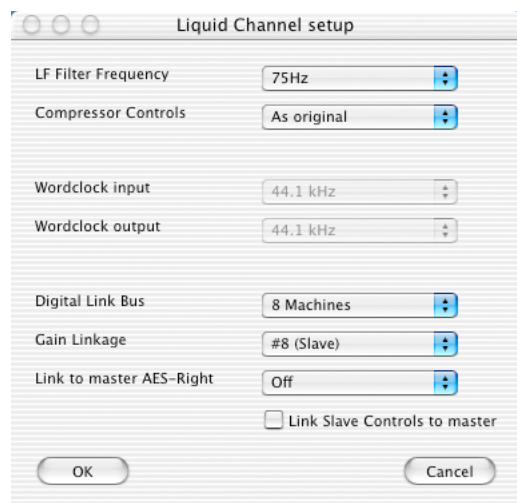
*N.B. Do not use your computer or The Liquid Channel™ hardware until the firmware update is complete.*



### Liquid Channel™ Setup...

This menu option allows the functionality of the currently selected Liquid Channel™ unit’s Setup menu to be accessed. For a description of each parameter please refer to the Liquid Channel™ hardware user guide, pages 9–10.

*N.B. If using the Setup menu on the hardware unit, you must exit the Setup menus (by cycling through all pages) before you can use the Liquid Channel™ Setup options in the LiquidControl™ application.*



### Create Backup...

This option allows you to create a global backup of all replicas and program memories stored in the currently selected Liquid Channel™ unit. Backups are stored with the file extension .lqb

*N.B. It is strongly recommended that you back up ALL factory settings to your PC or Mac when you first receive your Liquid Channel hardware, in case of unwise creative decisions being made later!*

### Restore Backup...

This option allows you to restore a previously-saved backup to the currently selected Liquid Channel™ unit.

*N.B. Restoring a backup will overwrite all programs and replicas stored on the currently selected Liquid Channel™ unit.*

## Pre-amp Menu

---

This menu is used to select, load, save and archive the Liquid Channel™'s pre-amp replicas.

*N.B. This menu is also accessible from the LiquidControl™ interface as a pop-up menu, by clicking on the 'Pre-amp Sel.' button.*



Pre-amp replicas can be loaded on the hardware by simply clicking on them in this pop-up menu.

### Add Replica...

This option brings up a dialog box allowing you to upload a new individual pre-amp replica (or replicas) from your hard drive to the currently active Liquid Channel™ unit. Pre-amp replicas have the file extension .lqm

The maximum number of mic-pre replicas that may be stored in The Liquid Channel™ hardware at any time is 40. Hence it may be necessary to remove some mic-pre replicas to make room for the next ones. The Liquid Channel™ will warn you that the memory is full with a "no space" message on the unit's LCD.

### Remove Replica(s)...

This option brings up a dialog box allowing you to select a pre-amp replica (or replicas, by holding shift and selecting additional types) to remove from the currently active Liquid Channel™ unit. It is recommended that you save replicas to disk (see below) before you remove them in case they are required later.

*N.B. If you delete or update (remove then add a replica using software) a replica which is being used by the currently selected program, the Liquid Channel™ will continue to use the current replica until another program is selected.*

### Save Replica to disk...

This option brings up a dialog box allowing you to save individual pre-amp replicas currently stored on your Liquid Channel™ unit to your computer's hard drive. Saved pre-amp replicas are stored with the file extension .lqm

### Backup All Replicas...

This option allows all the pre-amp and compressor replicas stored on the currently selected Liquid Channel™ unit to be saved to disk. Backups are stored with the file extension .lqb

### Restore Replicas from Backup...

This option allows a previously-saved set of all backup pre-amp replicas to be restored.

*N.B. All the compressor replicas from this backup will also be restored.*

### Replica list

Below the above options is a list of all currently installed pre-amp replicas. Simply select one from the list to make it active in the current program.



## Program Menu

---

This menu is used to select, load, save and archive the Liquid Channel™'s program memories.

A program memory recalls ALL front panel settings for a particular channel setup ('total recall'), (except for +48V Phantom Power, to avoid microphone damage), and sample rate/word clock settings.

*N.B. This menu is also accessible from the LiquidControl™ interface as a pop-up menu, by clicking on the 'Program Name' text below the FF logo.*



Below the menu options is a list of all programs currently saved on the currently-active Liquid Channel™ unit. Simply clicking on any of these will instantly recall the relevant session settings.

### Save To Device...

This option allows you to save the current individual program to a program memory on the currently selected Liquid Channel™ unit.

### Rename

This option allows the currently-selected program to be renamed. Note that names must later be saved as a program memory.

### Save To Disk...

This option brings up a dialog box allowing you to save the current individual program to your computer's hard drive. Saved programs are stored with the file extension .lqp

### Load From Disk...

This option brings up a dialog box allowing you to select a previously-saved individual program to restore.

*N.B. This function will load the program into the hardware unit, but the program will not be stored on the unit unless you choose Save To Device (see above) or perform a save on the hardware unit itself.*

### Backup all Programs...

This option allows **all** the program memories stored on the currently selected Liquid Channel™ unit to be saved to disk. Backups are stored with the file extension .lqb

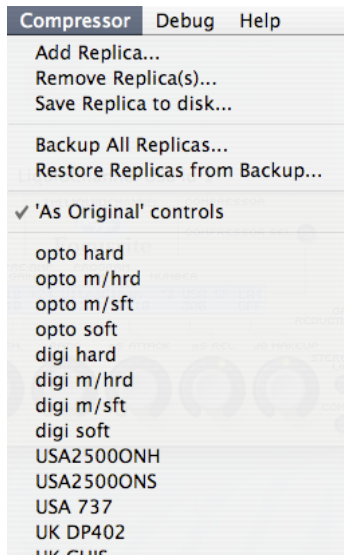
### Restore Programs from Backup...

This option allows a previously-saved set of all backup program memories to be restored.

## Compressor Menu

This menu is used to select, load, save and archive the Liquid Channel™'s compressor replicas.

*N.B. This menu is also accessible from the LiquidControl™ interface as a pop-up menu, by clicking on the 'Compressor Sel.' button.*



Compressor replicas can be loaded on the hardware by simply clicking on them in this pop-up menu.

### Add Replica...

This option brings up a dialog box allowing you to upload a new individual compressor replica (or replicas) to the currently active Liquid Channel™ unit. Compressor replicas have the file extension .lqc

The maximum number of compressor replicas that may be stored in The Liquid Channel™ hardware at any time is 40. Hence it may be necessary to remove some compressor replicas to make room for the next ones. The Liquid Channel™ will warn you that the memory is full with a "no space" message on the unit's LCD.

### Remove Replica(s)...

This option brings up a dialog box allowing you to select a compressor replica (or replicas, by holding shift and selecting additional types) to remove from the currently active Liquid Channel™ unit. It is recommended that you save replicas to disk

(see below) before you remove them in case they are required later.

*N.B. If you delete or update (remove then add a replica using software) a replica which is being used by the currently selected program, the Liquid Channel™ will continue to use it until another program is selected.*

### Save Replica to disk...

This option brings up a dialog box allowing you to save individual compressor replicas currently stored on your Liquid Channel™ unit to your computer's hard drive. Saved compressor replicas are stored with the file extension .lqc

### Backup All Replicas...

This option allows all the compressor and pre-amp replicas stored on the currently selected Liquid Channel™ unit to be saved to disk. Backups are stored with the file extension .lqb

### Restore Replicas from Backup...

This option allows a previously-saved set of all backup compressor replicas to be restored.

*N.B. All the mic-pre replicas from this backup will also be restored.*

### 'As Original' controls

Rather than selecting the 'Liquid Channel Setup' option within the LiquidChannel menu (refer to the Liquid Channel™ hardware user guide, pages 9–10), the 'As Original' controls option provides an easy shortcut to the selection of compressor controls. Selecting (marked with a tick) or deselecting this option will make only the compressor parameters that appear on the original vintage device active, or provide access to **all** front panel parameters, respectively ('free' editing).

### Replica list

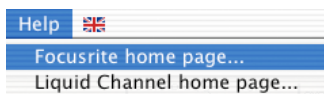
Below the above options is a list of all currently installed compressor replicas. Simply select one from the list to make it active in the current program.



## Help Menu

---

This menu provides further information, help and support for the Liquid Channel™ hardware and LiquidControl™ application.



### **Focusrite home page...**

If your computer has an active connection to the internet, this menu item will launch a web browser and take you to [www.focusrite.com](http://www.focusrite.com)

### **Liquid Channel™ home page...**

If your computer has an active connection to the internet, this menu item will launch a web browser and take you to [www.ffliquid.com](http://www.ffliquid.com)

## Troubleshooting

---

a) If the software fails to connect (and you've chosen the correct USB ID corresponding to that in the Setup Menu of the hardware), try changing the USB ID in the Setup Menu of the hardware. If this fails, close the application and reboot. If this still doesn't work, turn the hardware off and on again, but be sure that the volume control for monitors is turned down.

b) Note that on the Mac, if Classic is running in the background, you may have to try two or three times before connecting successfully.

c) If the software appears to 'lock up' – try a) above.

d) We recommend you do not unplug the USB connection while LiquidControl™ is connected to the Liquid Channel.

e) We recommend you do not leave the Liquid Channel™ connected to the computer if you put the computer to sleep/standby.

f) If you cannot select the pre-amp type, is the line input selected at the input stage? This will mean that only the 'FLAT trfmr' input can be used.

g) If you cannot change compressor parameters, are the compressor controls set to 'As Original Model' in the Setup Menu? This may make some dials inactive. Alternatively, the 'Show Value' switch may be pressed on the hardware, which will mean that EQ parameters are displayed and compressor parameters are hidden.

**For further information and support, please visit [www.ffliquid.com](http://www.ffliquid.com)**