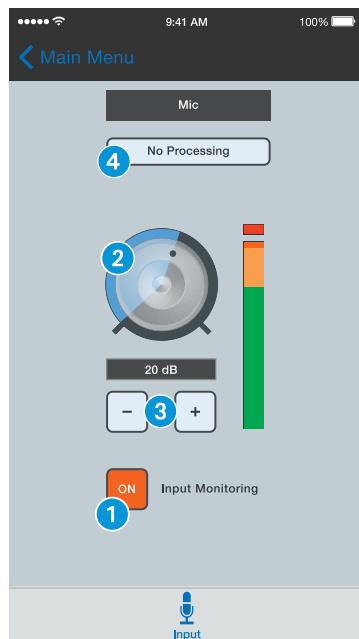


3B Adjusting Input Level with Apogee Maestro App



- ▶ Open Apogee Maestro app and choose *Sennheiser ClipMic digital* from the main menu.



- 1 Tap the *Input Monitoring* button to hear your microphone input.
- 2 Turn the *Gain Adjustment* knob to increase or decrease the microphone input to the desired level. Small adjustments can also be made by pressing either the “-” or “+” buttons 3.

Tips for Setting Input Level

The best way to do this is to monitor the loudest sound you will be recording and adjust the input gain so the input metering remains green, yellow or orange and not red. If the microphone input meter becomes red when recording, the input is too high and the recording will be distorted.

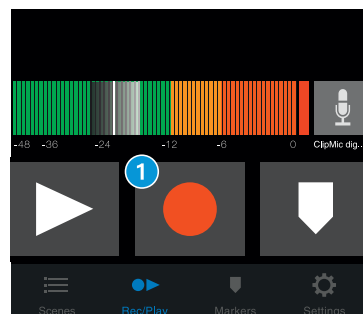
- 4 Select an *Input Processing* preset. The presets use onboard DSP processing to shape the sound with EQ, compression and limiting to achieve the most natural or unique result. Select *No Processing* or leave as is to bypass this feature.

4 Recording

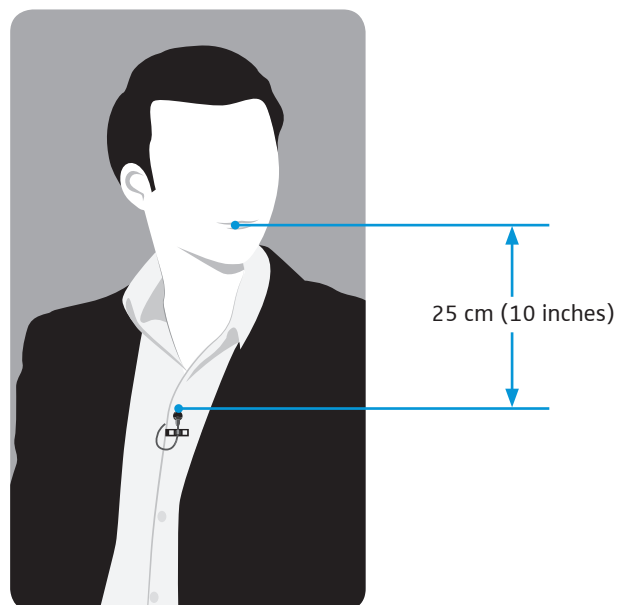


Note:
It is recommended that you set your iOS device to airplane mode to prevent any incoming calls from disrupting your recordings.

- ▶ Open Apogee MetaRecorder or any other Core Audio compatible recording App. ClipMic digital should be automatically detected and selected as the input device.
- ▶ If you haven't already done so, connect headphones to the built-in output on your iOS device and enable input monitoring in the recording App.
- ▶ Tap the *Record* button 1 in the App to begin.



Attachment of the Microphone



For more info on Apogee MetaRecorder and other compatible apps, visit www.apogeedigital.com/apps

Quick Start Guide ClipMic digital

Powered by



SENNHEISER

SENNHEISER

Sennheiser electronic GmbH & Co. KG

Am Labor 1, 30900 Wedemark, Germany
www.sennheiser.com

Printed in Germany, Publ. 04/15, 560096/A01

Overview



- 1 Sennheiser ME 2 microphone capsule
- 2 Apple MFi certified Lightning connector
- 3 Apogee PureDigital A/D conversion circuitry

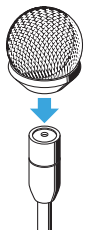
In the Box

- 1 ClipMic digital microphone
- 1 Carrying pouch
- 1 Clip
- 1 Quick Start Guide
- 1 Metal wind screen

System Requirements

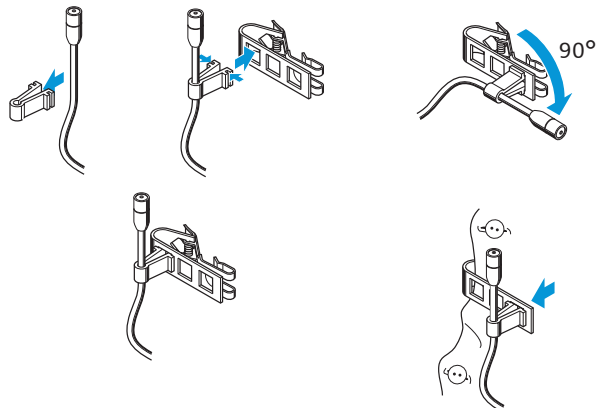
- iPhone 6, iPhone 6 plus, iPhone 5s, iPhone 5c, iPhone 5
- iPad Air 2, iPad Air, iPad (4th generation)
- iPad mini 3, iPad mini 2, iPad mini
- iPod touch (5th generation)
- iOS version: 8.0 and later
- Apogee MetaRecorder App, Apogee Maestro App or any Core Audio compatible App on iOS
 - Apogee MetaRecorder allows you to record audio and control your ClipMic digital microphone.
 - Apogee Maestro allows you to control your ClipMic digital microphone. This is not an App for recording.

Wind Screen



This metal wind screen reduces the wind noise by a maximum of 20 dB.

Clip



For thin clothes (e.g. silk), please use the outer hole where the clip's contact pressure is the highest.

1 Installing the App


- ▶ Install Apogee MetaRecorder or Apogee Maestro from Apple's App Store for iOS.



Apogee MetaRecorder



Apogee Maestro

-  **Note:** It is possible to record with ClipMic digital using any Core Audio compatible App.

2 Connecting to your iOS Device

- ▶ Connect ClipMic digital to the Lightning port on your iPhone, iPad or iPod touch. By default, you will not hear ClipMic digital until input monitoring is enabled in an App.
- ▶ Connect headphones to the built-in analog output on your iPhone, iPad or iPod touch. This is necessary to avoid feedback when monitoring your microphone input.



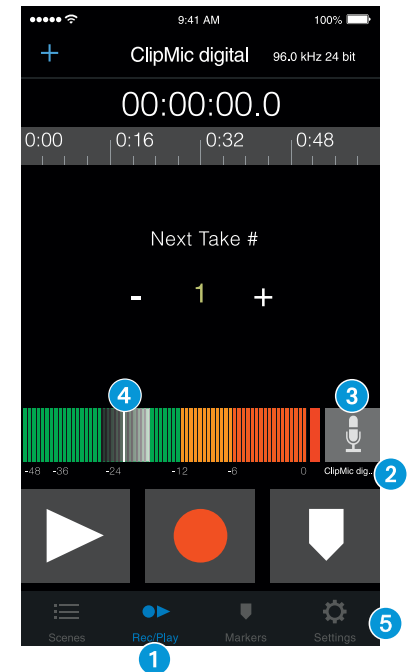
3A Preparing the Recording




ClipMic digital's input gain can be controlled from either of Apogee's two iOS Apps or from any recording App that supports Core Audio input control.

Adjusting Input Level with Apogee MetaRecorder App

- 1 Open Apogee MetaRecorder and tap the *Rec/Play* tab.



- 2 Confirm that *ClipMic digital* appears just below the microphone icon.
- 3 Tap the microphone icon to reveal the input level slider.
- 4 Drag the input slider with your finger to adjust the microphone input to the desired level.
- 5 Tap the *Settings* tab and enable input monitoring .

