

BOSE[®]



BOSE[®] MIE2 MOBILE HEADSET

Owner's Guide | Guía de usuario | Notice d'utilisation

Welcome

Thank you for purchasing the Bose® MIE2 mobile headset. The Bose® MIE2 mobile headset offers a combination of lifelike audio and communications performance and comfortable fit not available from most conventional earbuds.

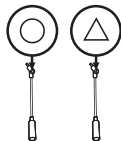
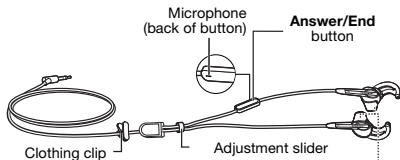
Register your product

Now is a good time to register your headset. You can do this easily by going to <http://global.Bose.com/register>.

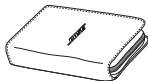


This product conforms to all EU Directive requirements as applicable by law. The complete Declaration of Conformity can be found at www.Bose.com/compliance.

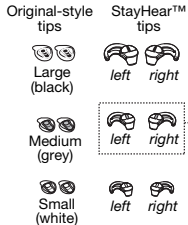
WARNING: DO NOT use mobile phone adapters to connect headset to airplane seat jacks as this could result in personal injury such as burns or property damage due to overheating. Remove and disconnect immediately if you experience warming sensation or loss of audio.



Mobile phone adapters (2)



Carrying case



*Headset comes with medium StayHear™ tips attached

©2010 Bose Corporation. No part of this work may be reproduced, modified, distributed, or otherwise used without prior written permission. All trademarks referenced herein are property of Bose Corporation.

Connecting to a mobile phone or audio device

You can connect the headset to your mobile phone with either the 3.5 mm stereo plug (compatible with standard headphone jacks) or by using one of the two included 2.5 mm adapter cables if needed.

The correct connection should allow:

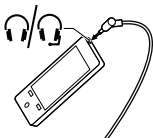
- Stereo sound to be heard during music playback and communications
- Your voice to be heard by the person on the other end of a phone call
- The Answer/End button to operate as expected

Compatible with many music-enabled mobile phones. Refer to the enclosed compatibility list or visit www.Bose.com/phones for the latest list of compatible phones.

Without adapter

If your phone has a 3.5 mm headphone/headset jack, you do not need to use the included adapters.

1. Plug the headset into the headphone/headset jack on the phone.
2. Put on the headset.



 Device with 3.5 mm headphone/headset jack

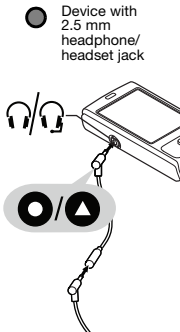
With adapter

The Bose[®] MIE2 mobile headset includes two unique phone adapters. Each is identified by a small symbol (circle, triangle) on the top of the plug.

If your phone has a 2.5 mm headphone/headset jack, you will need to use one of these adapters.

1. Select the appropriate adapter.
2. Attach the adapter to the headset cable.
3. Plug the headset with the adapter into the headphone/headset jack on the phone.
4. Put on the headset.

Note: If your phone does not respond when you press the Answer/End button, you are getting partial or no sound, or the microphone is not picking-up sound, you may be using the wrong adapter. Try the other adapter and check again. Refer to www.Bose.com/phones to determine which adapter is compatible with your phone.



Answering and ending calls

The Bose® MIE2 mobile headset includes an easy to access Answer/End button with integrated microphone. Simply press the Answer/End button to perform an action.

Note: Some phones may require you to press twice or press and hold the Answer/End button for a few seconds to perform functions.

Answering calls

When you receive an incoming call, press and release the Answer/End button to answer.

Ending calls

When you are ready to end your call, press and release the Answer/End button.

Note: Some unique phone and music playback functions, like last number redial, voice commands, and track navigation are device-dependant, and may be accessible using the Answer/End button. Refer to your mobile phone user's manual to find out what features are available.

Using a single earpiece

The Bose® MIE2 mobile headset can be used with only the right (R) earpiece in your ear. This allows you to take calls and still hear surrounding sounds.



Importance of Proper Fit

When you wear the headset properly, it provides the comfort and clarity you expect from Bose®.

Fitting the headphones to your ear

The headphone earpiece has a soft StayHear™ tip attached, allowing it to rest comfortably in the bowl of your ear. The wing part of the tip fits just under your ear ridge.

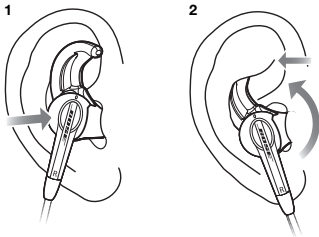
Note: Each tip is marked with either an L or an R to indicate which earpiece it is for. Be sure to attach the left StayHear™ tip to the left earpiece and the right StayHear™ tip to the right earpiece.



To determine if the tip is the right size:

1. Insert the earpiece into the canal just enough for the headphone to rest lightly against your ear.
2. Tilt the headphone back and press the tip wing under the ear ridge until it is secure.

The tips should fit comfortably yet securely in the bowl of the ear.



Changing ear tips

Select the type and size of eartip that provides you with the best comfort and fit.

1. Gently peel the edges of the attached tip away from the earpiece, using care not to tear the tip.

CAUTION: To prevent damage, do not pull on the StayHear™ tip wing.

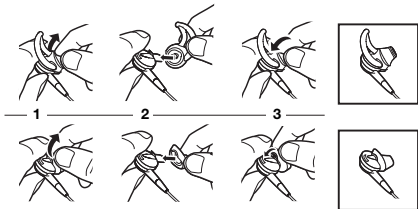
2. Position the opening of the new tip over the nozzle and the small slot over the nozzle hook.

Note: Each tip is marked with either an L or an R to indicate which earpiece it is for. Be sure to attach the left StayHear™ tip to the left earpiece and the right StayHear™ tip to the right earpiece.

3. Ease the base of the tip down around the base of the earpiece until the tip feels secured.



StayHear™ tips



Original-style tips

Adjusting for comfort and stability

There are several ways you can adjust your headset to provide additional comfort and stability. Using the adjustment slider and clothing clip you can customize how you wear your headset.

Using the adjustment slider

Move the adjustment slider up or down to reduce or increase the amount of loose cord between the left and right earpiece. Finding the right position for the slider can help optimize the placement of the Answer/End button and integrated microphone.



Using the clothing clip

Use the clothing clip to fasten the cable to your clothing, for convenience, stability, and to help manage the cable. This can be helpful during high-movement activities or when using the headset in a single earpiece configuration.



Troubleshooting

If you experience any trouble using your headset, try the following troubleshooting instructions. If you still need help, see the contact information on the inside back cover for assistance in your area.

Problem	What to do
No audio/intermittent	<ul style="list-style-type: none">• Make sure that the headset plug is securely connected to the headphone/headset jack (not the line out jack).• Try another audio device.
Sound is coming from only one earpiece	<ul style="list-style-type: none">• Make sure you are using the correct mobile phone adapter and that it is securely connected.• Unplug the headset from the audio source, then plug back in making sure they are securely connected.• Try another audio device.
Incoming call ring tone not heard through headset	<ul style="list-style-type: none">• Make sure your phone is set to pass the ring tone through to the headset. Check your phone settings and make adjustments as needed. <p>Note: <i>This feature may not be available on all phones.</i></p>
Excessive bass	<ul style="list-style-type: none">• Turn off any audio enhancement features on the audio source.
Low volume/poor audio	<ul style="list-style-type: none">• Turn off any "sound checker" or other audio signal altering features on the audio source.• Make sure ear tips and headset nozzles are clear of any debris or wax build-up.• Make sure the volume level of the audio source is turned up.
Microphone is not picking-up sound	<ul style="list-style-type: none">• Make sure you are using the correct mobile phone adapter and that it is securely connected.• Make sure the microphone is not being blocked or covered. <p><i>The microphone is located on the back of the Answer/End button (you may notice the small opening for the microphone).</i></p>
Phone not responding when Answer/End button is pressed	<ul style="list-style-type: none">• Make sure you are using the correct mobile phone adapter and that it is securely connected. <p>Note: <i>Some phones may require you to press and hold the Answer/End button for a few seconds to perform functions.</i></p>
Phone unexpectedly ends call	<ul style="list-style-type: none">• Some phones will end a call if the headset is unplugged during a call.• Make sure that the headset plug is securely connected to the headphone/headset jack.• Check phone signal strength to ensure network coverage.
Ear tips falling off	<ul style="list-style-type: none">• Make sure the ear tips are securely attached to the earpiece and nozzle hook.
Lost ear tip	<ul style="list-style-type: none">• Visit owners.Bose.com for replacement tips.
Sound is muffled from earpiece	<ul style="list-style-type: none">• Make sure ear tips and headset nozzles are clear of any debris or wax build-up.• Unplug the headset from the audio source, then plug back in making sure they are securely connected.• Try another audio device.

Cleaning

Your headset may require periodic cleaning:

- Ear tips: First, remove them from the headset and wash the tips with a mild detergent and water. Make sure you thoroughly rinse and dry them before putting them back on the headset.
- Headset nozzles, Microphone, Answer/End button: Clean only with a dry, soft cotton swab or equivalent. Never insert any cleaning tool into the nozzle or microphone opening.

WARNINGS:

- *Contains small parts which may be a choking hazard. Not suitable for children under age 3.*
- *This product contains magnetic material.*
- *Long-term exposure to loud music may cause hearing damage. It is best to avoid high volume levels when using headphones, especially for extended periods.*
- *Use caution when using your headset/headphones while operating a vehicle or engaging in any activity that requires your full attention. Check and follow local laws regarding mobile phone and headset/headphones use. Some jurisdictions impose specific limitations, such as single earpiece configuration, on the use of such products while driving.*



CAUTIONS:

- *Sounds that you rely on as reminders or warnings may have an unfamiliar character when using headphones. Be aware of how these sounds may vary in character so you can recognize them as needed.*
- *Do not drop, sit on, or allow the headset to be immersed in water.*

Limited Warranty

Your Bose® MIE2 mobile headset is covered by a limited warranty. Details of the limited warranty are provided on the product registration card that is included in the carton. Please refer to the card for instructions on how to register. Failure to register will not affect your limited warranty rights.

What you must do to obtain Limited Warranty service

Return the product, with proof of purchase from an authorized Bose dealer, using the following procedures:

1. Contact the Bose organization in your country/region (visit Global.Bose.com for contact information in your country/region) for specific return and shipping instructions.
2. Label and ship the product, freight prepaid, to the address provided by the Bose organization in your country.
3. Place any necessary Return Authorization Number prominently on the outside of the carton. Cartons not bearing a Return Authorization Number, where required, will be refused.

BOSE CORPORATION

USA

The Mountain,
Framingham, MA, 01701
888-757-9943
owners.Bose.com

Canada

9133 Leslie Street,
Suite 120, L4B 4N1
800-905-2177
www.Bose.ca

Australia

Unit 3/2 Holker St. Newington
NSW, 2127
1800 023 367
www.Bose.com.au

Belgique/Belgie

B-3700 Tongeren
012-390800
www.Bosebelgium.be

China

2203-2305 22F, West Gate
Tower/1038 West Nanjing
Road-MeiLongzhen Plaza,
Shanghai, 200041
86-22-62713000 ext. 162
www.Bose.cn

Denmark

2605 Brøndby
04343-7777
www.Bose.dk

Deutschland

D-61381 Friedrichsdorf
06172-71040
www.Bose.de

France

78100 Saint Germain en Laye
01-30616363
www.Bosefrance.fr

India

Shriram Bhartiya Kala Kendra,
1 Copernicus Marg, New Delhi,
100-001
91-11-2307-3825-3826-3827
www.Boseindia.com

Ireland

Castlebury Road,
Carrickmacross, Co
Monaghan
042-9671500
www.Bose.ie

Italia

Via della Magliana 876
Roma, 00148
06.60.292.555
www.Bose.it

Japan

Karakida Center bldg., 1-53-9
Karakida, Tama-shi, Tokyo,
2060035
81-423-575250
www.Bose.co.jp

Mexico

Paseo de las Palmas # 405,
11000
52-55-52-02-35-45
FAX: 52-55-52-02-41-95
www.Bose.com.mx

Nederland

1135 GE Edam
0299-390111
www.Bose.nl

New Zealand

0800 501 511
www.Bose.co.nz

Norge

N-2213 Kongsvinger
62-82-15-60
www.Bose.no

Österreich

Wienerbergstrasse 7 (10.OG)
01-60404340
www.Bose.at

Schweiz

Hauptstrasse 134
061-9757733
www.Bose.ch

Sverige

S-43153 Mölndal
031-878850
www.Bose.se

United Kingdom

1 Ambley Green,
Gillingham Business Park,
Gillingham, Kent, ME8 ONJ
0780-741-4500
Info_uk@Bose.com

Hong Kong

Suite 1203, Midas Plaza, 1 Tai
Yau Street, San Po Kong,
Kowloon, Hong Kong
(852) 21239000
support_hk@Bose.com

Finland

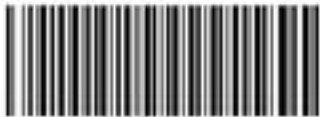
Kornetintie 6b Helsinki, 380
+358 10 778 6900
www.Bose.fi

Poland

ul. Woloska 12
Warszawa, 02-675
+48 (0)22-8522928
www.Bose.pl

World Wide Web

www.Bose.com
www.Boseeurope.com



329520-0010

BOSE[®]
Better sound through research[®]

©2010 Bose Corporation, The Mountain,
Framingham, MA 01701-9168 USA
AM329520 Rev.00