

MuseBox™

Virtual Instrument and Effects Module

Operating Manual





Intended to alert the user to the presence of uninsulated "dangerous voltage" within the product's enclosure that may be of sufficient magnitude to constitute a risk of electric shock to persons.

Intended to alert the user of the presence of important operating and maintenance (servicing) instructions in the literature accompanying the product.



CAUTION: Risk of electrical shock — DO NOT OPEN!

CAUTION: To reduce the risk of electric shock, do not remove cover. No user serviceable parts inside. Refer servicing to qualified service personnel.

WARNING: To prevent electrical shock or fire hazard, this apparatus should not be exposed to rain or moisture, and objects filled with liquids, such as vases, should not be placed on this apparatus. Before using this apparatus, read the operating guide for further warnings.



Este símbolo tiene el propósito, de alertar al usuario de la presencia de "(voltaje) peligroso" sin aislamiento dentro de la caja del producto y que puede tener una magnitud suficiente como para constituir riesgo de descarga eléctrica.

Este símbolo tiene el propósito de alertar al usuario de la presencia de instrucciones importantes sobre la operación y mantenimiento en la información que viene con el producto.



PRECAUCION: Riesgo de descarga eléctrica ¡NO ABRIR!

PRECAUCION: Para disminuir el riesgo de descarga eléctrica, no abra la cubierta. No hay piezas útiles dentro. Deje todo mantenimiento en manos del personal técnico cualificado.

ADVERTENCIA: Para prevenir choque eléctrico o riesgo de incendios, este aparato no se debe exponer a la lluvia o a la humedad. Los objetos llenos de líquidos, como los floreros, no se deben colocar encima de este aparato. Antes de usar este aparato, lea la guía de funcionamiento para otras advertencias.



Ce symbole est utilisé dans ce manuel pour indiquer à l'utilisateur la présence d'une tension dangereuse pouvant être d'amplitude suffisante pour constituer un risque de choc électrique.

Ce symbole est utilisé dans ce manuel pour indiquer à l'utilisateur qu'il ou qu'elle trouvera d'importantes instructions concernant l'utilisation et l'entretien de l'appareil dans le paragraphe signalé.



ATTENTION: Risques de choc électrique — NE PAS OUVRIR!

ATTENTION: Afin de réduire le risque de choc électrique, ne pas enlever le couvercle. Il ne se trouve à l'intérieur aucune pièce pouvant être réparée par l'utilisateur. Confiez l'entretien et la réparation de l'appareil à un réparateur Peavey agréé.

AVIS: Dans le but de réduire les risques d'incendie ou de décharge électrique, cet appareil ne doit pas être exposé à la pluie ou à l'humidité et aucun objet rempli de liquide, tel qu'un vase, ne doit être posé sur celui-ci. Avant d'utiliser de cet appareil, lisez attentivement le guide fonctionnant pour avertissements supplémentaires.



Dieses Symbol soll den Anwender vor unisolierten gefährlichen Spannungen innerhalb des Gehäuses warnen, die von Ausreichender Stärke sind, um einen elektrischen Schlag verursachen zu können.

Dieses Symbol soll den Benutzer auf wichtige Instruktionen in der Bedienungsanleitung aufmerksam machen, die Handhabung und Wartung des Produkts betreffen.



VORSICHT: Risiko — Elektrischer Schlag! Nicht öffnen!

VORSICHT: Um das Risiko eines elektrischen Schlages zu vermeiden, nicht die Abdeckung entfernen. Es befinden sich keine Teile darin, die vom Anwender repariert werden könnten. Reparaturen nur von qualifiziertem Fachpersonal durchführen lassen.

WARNUNG: Um elektrischen Schlag oder Brandgefahr zu verhindern, sollte dieser Apparat nicht Regen oder Feuchtigkeit ausgesetzt werden und Gegenstände mit Flüssigkeiten gefüllt, wie Vasen, nicht auf diesen Apparat gesetzt werden. Bevor dieser Apparat verwendet wird, lesen Sie bitte den Funktionsführer für weitere Warnungen.



Tarkoitettu kiinnittämään käyttäjän huomio sellaiseen eristämättömään vaaralliseen jännitteeseen tuotteen kotelossa, joka saattaa olla riittävän suuri aiheuttaakseen sähköiskuvaaran.

Tarkoitettu kiinnittämään käyttäjän huomio tärkeisiin käyttö- ja huolto-ohjeisiin tuotteen mukana seuraavassa ohjeistuksessa.

VAROITUS: Sähköiskun vaara — ÄLÄ AVAA!



VAROITUS: Sähköiskuvaaran vuoksi älä poista kantta. Ei sisällä käyttäjän huollettavissa olevia osia. Huoltaminen tulee jättää pätevän huoltohenkilöstön tehtäväksi.

VAARA: Sähköiskun tai tulipalon vaaran estämiseksi tätä laitetta ei saa altistaa sateelle tai kosteudelle, eikä sen päälle saa asettaa nesteellä täytettyjä esineitä, kuten maljakoita. Ennen laitteen käyttöä lue muut varoitukset käyttöohjeesta.



Är avsedd att varna användaren för förekomsten av oisolerad "farlig spänning" inom produktens hölje som kan vara av tillräcklig nivå för att personer ska riskera elektrisk stöt.

Är avsedd att uppmärksamma användaren på förekomsten av viktiga handhavande- och underhållsinstruktioner (service) i den litteratur som medföljer produkten.



OBSERVERA: Risk för elektrisk stöt – ÖPPNA INTE!

OBSERVERA: För att minska risken för elektrisk stöt, avlägsna inte höljet. Inga delar inuti kan underhållas av användaren. Låt kvalificerad servicepersonal sköta servicen.

WARNING: För att förebygga elektrisk stöt eller brandrisk bör apparaten inte utsättas för regn eller fukt, och föremål fyllda med vätskor, såsom vaser, bör inte placeras på denna apparat. Läs bruksanvisningen för ytterligare varningar innan denna apparat används.



Atto ad avvisare l'utente in merito alla presenza "voltage pericoloso" non isolato all'interno della scatola del prodotto che potrebbe avere una magnitudo sufficiente a costituire un rischio di scossa elettrica per le persone.

Atto ad avvisare l'utente in merito alla presenza di istruzioni operative e di assistenza importanti (manutenzione) nel libretto che accompagna il prodotto.



ATTENZIONE: Rischio di scossa elettrica — NON APRIRE!

ATTENZIONE: per ridurre il rischio di scossa elettrica, non rimuovere il coperchio. Non vi sono parti utili all'utente all'interno. Fare riferimento a personale addetto qualificato.

AVVERTENZA: per prevenire il rischio di scossa o il rischio di incendio, questo apparecchio non dovrebbe essere esposto a pioggia o umidità, e oggetti riempiti con liquidi, come vasi, non dovrebbero essere posizionati sopra questo apparecchio. Prima di usare questo apparecchio, leggere la guida operativa per ulteriori informazioni.



Destinado a alertar o usuário da presença de "voltage perigosa" não isolada dentro do receptáculo do produto que pode ser de magnitude suficiente para constituir um risco de choque elétrico a pessoas.

Destinado a alertar o usuário da presença de instruções importantes de operação e manutenção (conserto) na literatura que acompanha o produto.



CUIDADO: Risco de choque elétrico — NÃO ABRA!

CUIDADO: Para evitar o risco de choque elétrico, não remova a cobertura. Contém peças não reparáveis pelo usuário. Entregue todos os consertos apenas a pessoal qualificado.

ADVERTÊNCIA: Para evitar choques elétricos ou perigo de incêndio, este aparelho não deve ser exposto à chuva ou umidade e objetos cheios de líquidos, tais como vasos, não devem ser colocados sobre ele. Antes de usar este aparelho, leia o guia de operação para mais advertências.



人体への電気ショックの危険が考えられる製品筐体内の非絶縁「危険電圧」の存在をユーザーに警告するものです。

製品に付属している説明書に記載の重要な操作およびメンテナンス(サービス)要領の存在をユーザーに警告するものです。

注意: 電気ショックの危険あり — 開けないでください!



注意: 電気ショックの危険を低減するため、カバーを外さないでください。内部部品はユーザーによるサービス不可。資格のあるサービス要員のサービスを要請してください。

警告: 電気ショックまたは火災の危険を避けるため、この装置を雨または湿気にさらしてはなりません。また、過敏など液体を含む物をこの装置上に置いてはなりません。この装置を使用する前に、警告事項について操作ガイドをお読みください。



三角形内带有箭头闪电状符号意在敬告用户，表明产品内部有非绝缘的“危险电压”存在，而且具有足以致人触电的危险。

三角形内的感叹号意在警告用户，表明与机器的操作和维护（维修）有关的重要说明。



警告：触电危险—勿打开！

警告：为了避免触电危险，请勿打开机壳。机内无用户可以维修的部件。需要维修时，请与指定的专业维修人员联系。

警告：为了避免触电或火灾危险，请勿将本机置于雨中或潮湿之处。请勿将装满液体的物体，例如花瓶等置于本机之上。使用本机之前，请仔细阅读本操作说明书中的安全说明。



제품의 케이스 내에 감전을 유발할 수 있는 절연되지 않은 "위험한 전압"이 존재함을 사용자에게 알립니다. 제품과 함께 제공되는 인쇄물에 중요한 작동 및 유지 보수 (서비스) 지침이 있음을 사용자에게 알립니다.

주의: 감전 위험 — 열지 마십시오!


주의: 감전 위험을 낮추기 위해 덮개를 제거하지 마십시오. 장치 내부에는 사용자가 직접 수리할 수 있는 부품이 없습니다. 자격을 갖춘 서비스 요원에게 서비스를 의뢰하십시오.



경고: 감전 또는 화재 위험을 예방하기 위해 본 기기를 비 또는 습기에 노출하거나 꽃병과 같이 액체가 들어 있는 물체를 본 기기 위에 올려놓지 마십시오. 본 기기를 사용하기 전에 추가 경고 사항에 대한 작동 설명서를 읽어 주십시오.

IMPORTANT SAFETY INSTRUCTIONS

WARNING: When using electrical products, basic cautions should always be followed, including the following:

1. Read these instructions.
2. Keep these instructions.
3. Heed all warnings.
4. Follow all instructions.
5. Do not use this apparatus near water.
6. Clean only with a dry cloth.
7. Do not block any of the ventilation openings. Install in accordance with manufacturer's instructions.
8. Do not install near any heat sources such as radiators, heat registers, stoves or other apparatus (including amplifiers) that produce heat.
9. Do not defeat the safety purpose of the polarized or grounding-type plug. A polarized plug has two blades with one wider than the other. A grounding type plug has two blades and a third grounding prong. The wide blade or third prong is provided for your safety. If the provided plug does not fit into your outlet, consult an electrician for replacement of the obsolete outlet.
10. Protect the power cord from being walked on or pinched, particularly at plugs, convenience receptacles, and the point they exit from the apparatus.
11. Only use attachments/accessories provided by the manufacturer.
12.  Use only with a cart, stand, tripod, bracket, or table specified by the manufacturer, or sold with the apparatus. When a cart is used, use caution when moving the cart/apparatus combination to avoid injury from tip-over.
13. Unplug this apparatus during lightning storms or when unused for long periods of time.
14. Refer all servicing to qualified service personnel. Servicing is required when the apparatus has been damaged in any way, such as power-supply cord or plug is damaged, liquid has been spilled or objects have fallen into the apparatus, the apparatus has been exposed to rain or moisture, does not operate normally, or has been dropped.
15. Never break off the ground pin. Write for our free booklet "Shock Hazard and Grounding." Connect only to a power supply of the type marked on the unit adjacent to the power supply cord.
16. If this product is to be mounted in an equipment rack, rear support should be provided.
17. Note for UK only: If the colors of the wires in the mains lead of this unit do not correspond with the terminals in your plug, proceed as follows: a) The wire that is colored green and yellow must be connected to the terminal that is marked by the letter E, the earth symbol, colored green or colored green and yellow. b) The wire that is colored blue must be connected to the terminal that is marked with the letter N or the color black. c) The wire that is colored brown must be connected to the terminal that is marked with the letter L or the color red.
18. This electrical apparatus should not be exposed to dripping or splashing and care should be taken not to place objects containing liquids, such as vases, upon the apparatus.
19. The on/off switch in this unit does not break both sides of the primary mains. Hazardous energy can be present inside the chassis when the on/off switch is in the off position. The mains plug or appliance coupler is used as the disconnect device, the disconnect device shall remain readily operable.
20. Exposure to extremely high noise levels may cause a permanent hearing loss. Individuals vary considerably in susceptibility to noise-induced hearing loss, but nearly everyone will lose some hearing if exposed to sufficiently intense noise for a sufficient time. The U.S. Government's Occupational Safety and Health Administration (OSHA) has specified the following permissible noise level exposures:

Duration Per Day In Hours	Sound Level dBA, Slow Response
8	90
6	92
4	95
3	97
2	100
1 1/2	102
1	105
1/2	110
1/4 or less	115


According to OSHA, any exposure in excess of the above permissible limits could result in some hearing loss. Earplugs or protectors to the ear canals or over the ears must be worn when operating this amplification system in order to prevent a permanent hearing loss, if exposure is in excess of the limits as set forth above. To ensure against potentially dangerous exposure to high sound pressure levels, it is recommended that all persons exposed to equipment capable of producing high sound pressure levels such as this amplification system be protected by hearing protectors while this unit is in operation.

SAVE THESE INSTRUCTIONS!



INSTRUCCIONES IMPORTANTES PARA SU SEGURIDAD

CUIDADO: Cuando use productos electrónicos, debe tomar precauciones básicas, incluyendo las siguientes:

1. Lea estas instrucciones.
2. Guarde estas instrucciones.
3. Haga caso de todos los consejos.
4. Siga todas las instrucciones.
5. No usar este aparato cerca del agua.
6. Limpiar solamente con una tela seca.
7. No bloquear ninguna de las salidas de ventilación. Instalar de acuerdo a las instrucciones del fabricante.
8. No instalar cerca de ninguna fuente de calor como radiadores, estufas, hornos u otros aparatos (incluyendo amplificadores) que produzcan calor.
9. No retire la patilla protectora del enchufe polarizado o de tipo "a Tierra". Un enchufe polarizado tiene dos puntas, una de ellas más ancha que la otra. Un enchufe de tipo "a Tierra" tiene dos puntas y una tercera "a Tierra". La punta ancha (la tercera) se proporciona para su seguridad. Si el enchufe proporcionado no encaja en su enchufe de red, consulte a un electricista para que reemplaze su enchufe obsoleto.
10. Proteja el cable de alimentación para que no sea pisado o pinchado, particularmente en los enchufes, huecos, y los puntos que salen del aparato.
11. Usar solamente añadidos/accesorios proporcionados por el fabricante.
12.  Usar solamente un carro, pie, trípode, o soporte especificado por el fabricante, o vendido junto al aparato. Cuando se use un carro, tenga cuidado al mover el conjunto carro/aparato para evitar que se dañe en un vuelco. No suspenda esta caja de ninguna manera.
13. Desenchufe este aparato durante tormentas o cuando no sea usado durante largos periodos de tiempo.
14. Para cualquier reparación, acuda a personal de servicio cualificado. Se requieren reparaciones cuando el aparato ha sido dañado de alguna manera, como cuando el cable de alimentación o el enchufe se han dañado, algún líquido ha sido derramado o algún objeto ha caído dentro del aparato, el aparato ha sido expuesto a la lluvia o la humedad, no funciona de manera normal, o ha sufrido una caída.
15. Nunca retire la patilla de Tierra. Escríbanos para obtener nuestro folleto gratuito "Shock Hazard and Grounding" ("Peligro de Electrocutación y Toma a Tierra"). Conecte el aparato sólo a una fuente de alimentación del tipo marcado al lado del cable de alimentación.
16. Si este producto va a ser enracado con más equipo, use algún tipo de apoyo trasero.
17. Nota para el Reino Unido solamente: Si los colores de los cables en el enchufe principal de esta unidad no corresponden con los terminales en su enchufe, proceda de la siguiente manera: a) El cable de color verde y amarillo debe ser conectado al terminal que está marcado con la letra E, el símbolo de Tierra (earth), coloreado en verde o en verde y amarillo. b) El cable coloreado en azul debe ser conectado al terminal que está marcado con la letra N o el color negro. c) El cable coloreado en marrón debe ser conectado al terminal que está marcado con la letra L o el color rojo.
18. Este aparato eléctrico no debe ser sometido a ningún tipo de goteo o salpicadura y se debe tener cuidado para no poner objetos que contengan líquidos, como vasos, sobre el aparato.
19. El interruptor de en/lejos en esta unidad no rompe ambos lados de la red primaria. La energía peligrosa puede ser presente dentro del chasis cuando el interruptor de en/lejos está en el de la posición. El tapón de la red o el acoplador del aparato son utilizados como el desconecta dispositivo, el desconecta dispositivo se quedará fácilmente operable.
20. La exposición a altos niveles de ruido puede causar una pérdida permanente en la audición. La susceptibilidad a la pérdida de audición provocada por el ruido varía según la persona, pero casi todo el mundo perderá algo de audición si se expone a un nivel de ruido suficientemente intenso durante un tiempo determinado. El Departamento para la Salud y para la Seguridad del Gobierno de los Estados Unidos (OSHA) ha especificado las siguientes exposiciones al ruido permisibles:



Duración por Día en Horas	Nivel de Sonido dBA, Respuesta Lenta
8	90
6	92
4	95
3	97
2	100
1 ½	102
1	105
½	110
¼ o menos	115


De acuerdo al OSHA, cualquier exposición que exceda los límites arriba indicados puede producir algún tipo de pérdida en la audición. Protectores para los canales auditivos o tapones para los oídos deben ser usados cuando se opere con este sistema de sonido para prevenir una pérdida permanente en la audición, si la exposición excede los límites indicados más arriba. Para protegerse de una exposición a altos niveles de sonido potencialmente peligrosa, se recomienda que todas las personas expuestas a equipamiento capaz de producir altos niveles de presión sonora, tales como este sistema de amplificación, se encuentren protegidas por protectores auditivos mientras esta unidad esté operando.

GUARDE ESTAS INSTRUCCIONES!

INSTRUCTIONS IMPORTANTES DE SECURITE

ATTENTION: L'utilisation de tout appareil électrique doit être soumise aux précautions d'usage incluant:



1. Lire ces instructions.
2. Gardez ce manuel pour de futures références.
3. Prêtez attention aux messages de précautions de ce manuel.
4. Suivez ces instructions.
5. N'utilisez pas cette unité proche de plans d'eau.
6. N'utilisez qu'un tissu sec pour le nettoyage de votre unité.
7. N'obstruez pas les systèmes de refroidissement de votre unité et installez votre unité en fonction des instructions de ce manuel.
8. Ne positionnez pas votre unité à proximité de toute source de chaleur.
9. Connectez toujours votre unité sur une alimentation munie de prise de terre utilisant le cordon d'alimentation fourni.
10. Protégez les connecteurs de votre unité et positionnez les cablages pour éviter toutes déconnexions accidentelles.
11. N'utilisez que des fixations approuvées par le fabricant.
12.  Lors de l'utilisation sur pied ou poteau de support, assurez dans le cas de déplacement de l'ensemble enceinte/support de prévenir tout basculement intempestif de celui-ci.
13. Il est conseillé de déconnecter du secteur votre unité en cas d'orage ou de durée prolongée sans utilisation.
14. Seul un technicien agréé par le fabricant est à même de réparer/contrôler votre unité. Celle-ci doit être contrôlée si elle a subi des dommages de manipulation, d'utilisation ou de stockage (humidité,...).
15. Ne déconnectez jamais la prise de terre de votre unité.
16. Si votre unité est destinée à être montée en rack, des supports arrière doivent être utilisés.
17. Note pour les Royaumes-Unis: Si les couleurs de connecteurs du câble d'alimentation ne correspondent pas au guide de la prise secteur, procédez comme suit: a) Le connecteur vert et jaune doit être connecté au terminal noté E, indiquant la prise de terre ou correspondant aux couleurs verte et jaune du guide. b) Le connecteur Bleu doit être connecté au terminal noté N, correspondant à la couleur noire du guide. c) Le connecteur marron doit être connecté au terminal noté L, correspondant à la couleur rouge du guide.
18. Cet équipement électrique ne doit en aucun cas être en contact avec un quelconque liquide et aucun objet contenant un liquide, vase ou autre ne devrait être posé sur celui-ci. 1
9. L'interrupter (on-off) dans cette unité ne casse pas les deux côtés du primaire principal. L'énergie hasardeuse peut être présente dans le châssis quand l'interrupter (on-off) est dans la position. Le bouchon principal ou atelage d'appareil est utilisé comme le débrancher l'appareil restera facilement opérable.
20. Une exposition à de hauts niveaux sonores peut conduire à des dommages de l'écoute irréversibles. La susceptibilité au bruit varie considérablement d'un individu à l'autre, mais une large majorité de la population expérimentera une perte de l'écoute après une exposition à une forte puissance sonore pour une durée prolongée. L'organisme de la santé américaine (OSHA) a produit le guide ci-dessous en rapport à la perte occasionnée:


Durée par Jour (heures)	Niveau sonore moyen (dBA)
8	90
6	92
4	95
3	97
2	100
1 1/2	102
1	105
1/2	110
1/4 ou inférieur	115

D'après les études menées par le OSHA, toute exposition au delà des limites décrites ci-dessus entraînera des pertes de l'écoute chez la plupart des sujets. Le port de système de protection (casque, oreillette de filtrage,...) doit être observé lors de l'opération cette unité ou des dommages irréversibles peuvent être occasionnés. Le port de ces systèmes doit être observé par toutes personnes susceptibles d'être exposées à des conditions au delà des limites décrites ci-dessus.

GARDEZ CES INSTRUCTIONS!

WICHTIGE SICHERHEITSHINWEISE

SICHERHEITSHINWEISEACHTUNG: Beim Einsatz von Elektrogeräten müssen u.a. grundlegende Vorsichtsmaßnahmen befolgt werden:

1. Lesen Sie sich diese Anweisungen durch.
2. Bewahren Sie diese Anweisungen auf.
3. Beachten Sie alle Warnungen.
4. Befolgen Sie alle Anweisungen.
5. Setzen Sie dieses Gerät nicht in der Nähe von Wasser ein.
6. Reinigen Sie es nur mit einem trockenen Tuch.
7. Blockieren Sie keine der Lüftungsöffnungen. Führen Sie die Installation gemäß den Anweisungen des Herstellers durch.
8. Installieren Sie das Gerät nicht neben Wärmequellen wie Heizungen, Heizgeräten, Öfen oder anderen Geräten (auch Verstärkern), die Wärme erzeugen.
9. Beeinträchtigen Sie nicht die Sicherheitswirkung des gepolten Steckers bzw. des Erdungssteckers. Ein gepolter Stecker weist zwei Stifte auf, von denen einer breiter ist als der andere. Ein Erdungsstecker weist zwei Stifte und einen dritten Erdungsstift auf. Der breite Stift bzw. der dritte Stift dient Ihrer Sicherheit. Sollte der beiliegende Stecker nicht in Ihre Steckdose passen, wenden Sie sich bitte an einen Elektriker, um die ungeeignete Steckdose austauschen zu lassen.
10. Schützen Sie das Netzkabel, sodass niemand darauf tritt oder es geknickt wird, insbesondere an Steckern oder Buchsen und ihren Austrittsstellen aus dem Gerät.
11. Verwenden Sie nur die vom Hersteller erhältlichen Zubehörgeräte oder Zubehörteile.
12.  Verwenden Sie nur einen Wagen, Stativ, Dreifuß, Träger oder Tisch, der den Angaben des Herstellers entspricht oder zusammen mit dem Gerät verkauft wurde. Wird ein Wagen verwendet, bewegen Sie den Wagen mit dem darauf befindlichen Gerät besonders vorsichtig, damit er nicht umkippt und möglicherweise jemand verletzt wird.
13. Trennen Sie das Gerät während eines Gewitters oder während längerer Zeiträume, in denen es nicht benutzt wird, von der Stromversorgung.
14. Lassen Sie sämtliche Wartungsarbeiten von qualifizierten Kundendiensttechnikern durchführen. Eine Wartung ist erforderlich, wenn das Gerät in irgendeiner Art beschädigt wurde, etwa wenn das Netzkabel oder der Netzstecker beschädigt wurden, Flüssigkeit oder Gegenstände in das Gerät gelangt sind, das Gerät Regen oder Feuchtigkeit ausgesetzt wurde, nicht normal arbeitet oder heruntergefallen ist.
15. Der Erdungsstift darf nie entfernt werden. Auf Wunsch senden wir Ihnen gerne unsere kostenlose Broschüre „Shock Hazard and Grounding“ (Gefahr durch elektrischen Schlag und Erdung) zu. Schließen Sie nur an die Stromversorgung der Art an, die am Gerät neben dem Netzkabel angegeben ist.
16. Wenn dieses Produkt in ein Geräte-Rack eingebaut werden soll, muss eine Versorgung über die Rückseite eingerichtet werden.
17. Hinweis – Nur für Großbritannien: Sollte die Farbe der Drähte in der Netzleitung dieses Geräts nicht mit den Klemmen in Ihrem Stecker übereinstimmen, gehen Sie folgendermaßen vor: a) Der grün-gelbe Draht muss an die mit E (Symbol für Erde) markierte bzw. grüne oder grün-gelbe Klemme angeschlossen werden. b) Der blaue Draht muss an die mit N markierte bzw. schwarze Klemme angeschlossen werden. c) Der braune Draht muss an die mit L markierte bzw. rote Klemme angeschlossen werden.
18. Dieses Gerät darf nicht ungeschützt Wassertropfen und Wasserspritzern ausgesetzt werden und es muss darauf geachtet werden, dass keine mit Flüssigkeiten gefüllte Gegenstände, wie z. B. Blumenvasen, auf dem Gerät abgestellt werden.
19. Der Netzschalter in dieser Einheit bricht beide Seiten von den primären Hauptleitungen nicht. Gefährliche Energie kann anwesend innerhalb des Chassis sein, wenn der Netzschalter im ab Position ist. Die Hauptleitungen stöpseln zu oder Gerätekupplung ist benutzt, während die Vorrichtung abschaltet, das schaltet Vorrichtung wird bleiben sogleich hantierbar ab.
20. Belastung durch extrem hohe Lärmpegel kann zu dauerhaftem Hörverlust führen. Die Anfälligkeit für durch Lärm bedingten Hörverlust ist von Mensch zu Mensch verschieden, das Gehör wird jedoch bei jedem in gewissem Maße geschädigt, der über einen bestimmten Zeitraum ausreichend starkem Lärm ausgesetzt ist. Die US-Arbeitsschutzbehörde (Occupational and Health Administration, OSHA) hat die folgenden zulässigen Pegel für Lärmbelastung festgelegt:




Dauer pro Tag in Stunden	Geräuschpegel dBA, langsame Reaktion
8	90
6	92
4	95
3	97
2	100
1 1/2	102
1	105
1/2	110
1/4 oder weniger	115

Laut OSHA kann jede Belastung über den obenstehenden zulässigen Grenzwerten zu einem gewissen Hörverlust führen. Sollte die Belastung die obenstehenden Grenzwerte übersteigen, müssen beim Betrieb dieses Verstärkungssystems Ohrstöpsel oder Schutzvorrichtungen im Gehörgang oder über den Ohren getragen werden, um einen dauerhaften Hörverlust zu verhindern. Um sich vor einer möglicherweise gefährlichen Belastung durch hohe Schalldruckpegel zu schützen, wird allen Personen empfohlen, die mit Geräten arbeiten, die wie dieses Verstärkungssystem hohe Schalldruckpegel erzeugen können, beim Betrieb dieses Geräts einen Gehörschutz zu tragen.

BEWAHREN SIE DIESE SICHERHEITSHINWEISE AUF!

TÄRKEÄT TURVALLISUUSOHJEET

VAARA: Käytettäessä sähkölaitteita tulee aina huomioida mm. seuraavat turvallisuusohjeet:

1. Lue nämä ohjeet.
2. Säilytä nämä ohjeet.
3. Huomioi kaikki varoitukset.
4. Noudata kaikkia ohjeita.
5. Älä käytä laitetta veden lähellä.
6. Puhdista vain kuivalla kankaalla.
7. Älä tuki mitään tuuletusaukkoja. Asenna valmistajan ohjeiden mukaisesti.
8. Älä asenna lämpölähteiden, kuten pattereiden, liesien tai muiden lämpöä tuottavien laitteiden (kuten vahvistinten) lähelle.
9. Älä poista polarisoidun tai maadoitustyyppisen tulpan suojausta. Polarisoidun tulpan toinen napa on leveämpi kuin toinen. Maadoitustulpassa on kaksi napaa ja kolmas maadoitusnapa. Leveä napa ja maadoitusnapa on tarkoitettu turvaamaan laitteen käyttöä. Jos mukana toimitettu tulppa ei sovi pistorasiaan, kutsu sähkömies vaihtamaan pistorasia, sillä se on vanhentunut.
10. Suojaa virtajohtoa päälle kävelemiseltä ja nipistykseltä, erityisesti pistotulppien, pistorasioiden sekä laitteen ulosvientien kohdalla.
11. Käytä vain valmistajan toimittamia lisälaitteita.
12.  Käytä vain valmistajan määrittämän tai laitteen mukana myydyin vaunun, jalustan, kolmijalan, kiinnikkeen tai pöydän kanssa. Käytettäessä vaunua liikuta vaunun ja laitteen yhdistelmää varovasti, jotta vältetään loukkaantumiset kaatumisesta johtuen.
13. Irrota laite sähköverkosta ukkosmyrskyjen aikana tai jos laitetta ei käytetä pitkään aikaan.
14. Huoltaminen tulee jättää pätevän huoltohenkilöstön tehtäväksi. Huoltoa tarvitaan, kun laite on jollakin tavoin vioittunut, esim. virtalähteen johto tai pistoke on vioittunut, laitteen sisään on joutunut nestettä tai esineitä, laite on altistettu sateelle tai kosteudelle, laite ei toimi normaalisti tai se on pudonnut.
15. Älä koskaan katkaise maadoitusnastaa. Ottamalla meihin yhteyttä saat kirjasen "Sähköiskuvaara ja maadoitus". Kytke vain virtalähteeseen, joka vastaa laitteen virtajohtoon viereen merkittyä tyyppiä.
16. Jos laite kiinnitetään laiteräkkiin, tulee se tukea takaosastaan.
17. Note for UK only: If the colors of the wires in the mains lead of this unit do not correspond with the terminals in your plug, proceed as follows:
 - a) The wire that is colored green and yellow must be connected to the terminal that is marked by the letter E, the earth symbol, colored green or colored green and yellow.
 - b) The wire that is colored blue must be connected to the terminal that is marked with the letter N or the color black.
 - c) The wire that is colored brown must be connected to the terminal that is marked with the letter L or the color red.
18. Tätä sähkölaitetta ei tule altistaa nestetipoille tai roiskeille, eikä laitteen päälle saa asettaa nestettä sisältäviä esineitä, kuten maljakoita.
19. Laitteen virtakytkin ei katkaise ensiövirran molempia puolia. Laitteen sisällä voi olla vaarallinen jännite, kun virtakytkin on pois-asennossa. Virtajohto toimii pääkytkimenä, ja sen pitää olla aina käytettävissä.
20. Altistus erittäin korkeille äänitasoille voi aiheuttaa pysyvän kuulovaurion. Henkilöiden altitus melun aiheuttamille kuulovaurioille vaihtelee, mutta lähes kaikkien kuulo vaurioituu altistuttaessa riittävän kovalle melulle riittävän kauan. Yhdysvaltain hallituksen työturvallisuus- ja terveyshallinto (OSHA) on määrittänyt seuraavat hyväksyttävät melutasoaltistukset:



Kesto päivää kohti tunteina	Äänitaso dBA, hidas vaste
8	90
6	92
4	95
3	97
2	100
1 1/2	102
1	105
1/2	110
1/4 tai alle	115

OSHA:n mukaan altistus yo. tasoja korkeammalle määrälle voi aiheuttaa osittaisen kuulon menetyksen. Käytettäessä vahvistinjärjestelmää tulee kuulovaurioiden estämiseksi käyttää korvatulppia tai kuulosuojaimia, mikäli altistus ylittää yllä asetetut rajat. Jotta vältetään mahdollisesti vaarallinen altistus korkeille äänenpaineen tasolle, suositellaan, että kaikki korkeaa äänenpainetta tuottavien laitteiden, kuten tämän vahvistimen, lähistöllä olevat henkilöt suojaavat kuulonsa, kun laite on käytössä.

SÄILYÄ NÄMÄ OHJEET!

VIKTIGA SÄKERHETSINSTRUKTIONER

WARNING: När du använder elektriska produkter ska grundläggande försiktighetsåtgärder iakttas, inklusive följande:

1. Läs dessa instruktioner.
2. Behåll dessa instruktioner.
3. Iakttag alla varningar.
4. Följ alla instruktioner.
5. Använd inte apparaten i närheten av vatten.
6. Rengör endast med en torr trasa.
7. Blockera inte ventilationsöppningarna. Installera i enlighet med tillverkarens instruktioner.
8. Installera inte i närheten av värmekällor som radiatorer, varmluftsventiler, spisar eller andra apparater (inklusive förstärkare) som ger ifrån sig värme.
9. Motverka inte säkerhetsfunktionen hos en jordad stickkontakt. En jordad stickkontakt har två stift och metallbleck på sidorna. Metallblecket finns där för din säkerhet. Kontakta en elektriker för utbyte av det föråldrade vägguttaget om den medföljande stickkontakten inte passar i ditt vägguttag.
10. Skydda strömsladden från att klivas på eller klämmas, särskilt vid kontakten, grenuttag och platsen där den lämnar apparaten.
11. Använd enbart tillsatser/tillbehör som tillhandahålls av tillverkaren.
12.  Använd endast med en kärra, ställ, trefot, fäste eller bord i enlighet med tillverkarens specifikationer, eller som säljs tillsammans med apparaten. Var försiktig när du använder en kärra så att inga personskador uppstår på grund av att kombinationen kärra-apparat välter när den flyttas.
13. Koppla ur apparaten vid åskväder eller när den inte används under en längre tid.
14. Låt kvalificerad servicepersonal sköta all service. Service krävs om apparaten har skadats på något vis, till exempel om strömsladden eller stickkontakten har skadats, vätska har spillts eller föremål har fallit ner i apparaten, apparaten har utsatts för regn eller fukt, inte fungerar normalt eller har tappats.
15. Anslut aldrig till ojordade uttag. Skriv till oss för vårt gratishäfte "Stötrisk och jordning". Anslut endast till en strömkälla av samma typ som enhetens märkning anger (bredvid strömsladden).
16. Om produkten ska monteras i ett utrustningsrack bör bakre stöd användas.
17. Note for UK only: If the colors of the wires in the mains lead of this unit do not correspond with the terminals in your plug, proceed as follows:
 - a) The wire that is colored green and yellow must be connected to the terminal that is marked by the letter E, the earth symbol, colored green or colored green and yellow.
 - b) The wire that is colored blue must be connected to the terminal that is marked with the letter N or the color black.
 - c) The wire that is colored brown must be connected to the terminal that is marked with the letter L or the color red.
18. Denna elektriska apparat bör inte utsättas för dropp eller stänk och försiktighet bör iakttas så att inte föremål som innehåller vätskor, såsom vaser, placeras ovanpå apparaten.
19. Enhetens strömbrytare bryter inte båda sidor av strömkretsen. Farlig energi kan förekomma inuti höljet när strömbrytaren är i av-läget. Stickkontakten eller apparatkontakten fungerar som bortkopplingsenhet, bortkopplingsenheten ska hållas lättillgänglig.
20. Extremt höga ljudnivåer kan orsaka permanent hörselskada. Olika personer skiljer sig åt i benägenhet att få hörselskador av oljud, men i princip alla får hörselskador om de utsätts för tillräckligt höga ljud under tillräcklig tid. Den amerikanska regeringens arbetsskydds- och hälsoförvaltning (OSHA) har angivit följande maxnivåer för tillåten exponering för oljud:




Längd per dag i timmar	Ljudnivå dBA, långsam svarstid
8	90
6	92
4	95
3	97
2	100
1 1/2	102
1	105
1/2	110
1/4 eller mindre	115

Enligt OSHA kan exponering utöver ovanstående tillåtna gränser orsaka hörselskador. Öronproppar eller skydd för hörselgången eller över öronen måste bäras när detta förstärkarsystem används för att förebygga permanenta hörselskador, om exponeringen överskrider gränsvärdena enligt ovan. För att skydda mot potentiellt farlig exponering för höga ljudtrycksnivåer rekommenderas det att personer som exponeras för utrustning som kan producera höga ljudtrycksnivåer såsom detta förstärkarsystem skyddas med hörselskydd när enheten är i drift.

SPARA DESSA INSTRUKTIONER!

IMPORTANTI NORME DI SICUREZZA:

ATTENZIONE: Durante uso di apparecchiature elettriche vanno osservate alcune precauzioni basilari, tra cui le seguenti:

1. Leggete queste istruzioni.
2. Conservate le istruzioni.
3. Rispettate tutte le avvertenze.
4. Seguite le istruzioni.
5. Non usate questo prodotto vicino all'acqua.
6. Pulite esclusivamente con un panno asciutto.
7. Non ostruite le fessure di ventilazione. Installate il dispositivo seguendo le istruzioni del produttore.
8. Il prodotto va collocato lontano da sorgenti di calore quali radiatori, pompe di calore, stufe o altri dispositivi che generano calore (compresi gli amplificatori).
9. Non eliminate i dispositivi di sicurezza come spine polarizzate o con messa a terra. La spina polarizzata ha due lame, una più grande dell'altra. La spina con messa a terra ha due contatti più un terzo per la terra. Il contatto più largo o terzo polo è indispensabile per la vostra sicurezza. Se la spina fornita non adatta alla vostra presa, mettetevi in contatto con un elettricista per la sostituzione della presa obsoleta.
10. Fate attenzione a non camminare o incastrare il cavo di alimentazione, soprattutto in prossimità della spina o del punto in cui si collega all'apparecchiatura.
11. Usate solo accessori originali forniti dal costruttore.
12.  L'apparato va usato esclusivamente con il supporto indicato dal produttore o venduto con l'apparato. Se intendete adoperare un carrello su ruote, fate attenzione quando spostate apparecchio e supporto per evitare che la loro caduta possa causare danni a cose o persone.
13. Scollegatelo l'apparecchio dalla presa di corrente durante un temporale con fulmini o quando non s'intende usare per un lungo periodo.
14. L'assistenza va eseguita esclusivamente da personale autorizzato. È necessario ricorrere all'assistenza se il dispositivo ha subito danni, per esempio si sono rovinati il cavo di alimentazione o la spina, all'interno è caduto del liquido o un oggetto, il dispositivo è rimasto esposto alla pioggia o all'umidità, non funziona normalmente o è caduto a terra.
15. Non rimuovete lo spinotto della terra. Collegate il dispositivo esclusivamente a una presa di corrente del tipo indicato accanto alla targhetta posta vicino al cavo di alimentazione.
16. Se questo prodotto deve essere montato a rack, è necessario sostenerlo anche nella parte posteriore.
17. Nota per UK: Se i colori dei fili nel cavo di alimentazione per questa unità non corrispondono con i terminali della vostra spina, procedere come segue: a) Il filo di colore verde/giallo deve essere collegato al terminale che marcato con lettera E, o simbolo di terra, o colore verde o verde/giallo. b) Il filo di colore blu deve essere collegato al terminale marcato con la lettera N o di colore Nero. c) Il filo di colore marrone deve essere collegato al terminale marcato con la lettera L o di colore Rosso.
18. Questo apparato elettrico non deve essere esposto a gocce o schizzi, va in ogni caso evitato di appoggiare oggetti contenenti liquidi, come bicchieri, sull'apparecchio.
19. L'interruttore on/off in questa unità non interrompe entrambi i lati della rete di alimentazione. All'interno dell'apparecchio può essere presente elettricità anche con interruttore on/off in posizione off. La spina o il cavo di alimentazione è utilizzato come sezionatore, il dispositivo di sezionamento deve restare sempre operativo.
20. L'esposizione a livelli di volume molto elevati può causare la perdita permanente dell'udito. La predisposizione alla perdita dell'udito causata da livelli elevati di volume varia notevolmente da persona a persona, ma quasi tutti subiscono una perdita di udito almeno parziale se soggetti a volume di livello elevato per un tempo sufficientemente lungo. L'ufficio Lavoro e Salute del governo degli USA (OSHA) ha elaborato la seguente tabella di tolleranza ai rumori:




Esposizione giornaliera in ore	Livello sonoro dBA, Slow response
8	90
6	92
4	95
3	97
2	100
1 1/2	102
1	110
1/4 o minore	115

Secondo l'OSHA, l'esposizione a livelli di volume al di sopra dei limiti stabiliti può causare una perdita almeno parziale dell'udito. Quando si adopera questo sistema di amplificazione, è necessario indossare auricolari o apposite protezioni per il condotto auditivo, per evitare la perdita permanente dell'udito se l'esposizione supera i limiti sopra riportati. Per evitare di esporvi al rischio di danni derivanti da elevati livelli di pressione sonora, si raccomanda di adoperare delle protezioni per gli orecchi quando si usano attrezzature in grado di produrre elevati livelli sonori, come quest'amplificatore.

CONSERVATE QUESTE ISTRUZIONI!

INSTRUÇÕES IMPORTANTES DE SEGURANÇA

ADVERTÊNCIA: Ao usar eletrodomésticos, precauções básicas devem sempre ser seguidas, incluindo as seguintes:

1. Leia estas instruções.
2. Mantenha estas instruções.
3. Preste atenção a todas as advertências.
4. Siga todas as instruções.
5. Não use este aparelho perto d'água.
6. Limpe somente com um pano seco.
7. Não obstrua nenhuma das aberturas de ventilação. Instale de acordo com as instruções do fabricante.
8. Não instale perto de nenhuma fonte de calor tais como radiadores, registros de calor, fogões ou outros aparelhos (incluindo amplificadores) que produzam calor.
9. Não desafie o propósito de segurança do plugue polarizado ou do tipo aterrado. Um plugue polarizado tem duas lâminas com uma mais larga que a outra. Um plugue do tipo aterrado tem duas lâminas e um terceiro plugue terra. A lâmina larga ou o terceiro pino são fornecidos para sua segurança. Se o plugue disponibilizado não couber em sua tomada, consulte um electricista para troca da tomada obsoleta.
10. Proteja o cabo de energia para não ser pisado ou espremido principalmente em plugues, recipientes e o ponto de onde sai do aparelho.
11. Use apenas conexões/acessórios fornecidos pelo fabricante.
12.  Use apenas um carrinho, banquetas, tripé, suporte, ou mesa especificado pelo fabricante, ou vendido com o aparelho. Quando um carrinho for usado, tome cuidado ao mover a combinação carrinho/aparelho para evitar ferimentos por tombamento.
13. Tire esse aparelho da tomada durante tempestades de raios ou quando for ficar sem usar por longos períodos de tempo.
14. Entregue todos os consertos apenas a pessoal qualificado. O conserto é necessário quando o aparelho tiver sofrido qualquer dano, tais como o cabo de energia ou plugue estiverem danificados, líquidos tenham sido derramados ou objetos tenham caído no aparelho, o aparelho tenha sido submetido à chuva ou umidade, não funcionar normalmente, ou tenha sido deixado cair.
15. Nunca quebre fora o pino terra. Escreva pedindo nosso livreto grátis "Perigos de Choque e Aterramento." Ligue apenas a um suprimento de energia do tipo marcado na unidade adjacente ao fio de fornecimento de energia.
16. Se este produto for ser montado em uma estante para equipamentos, deve ser montado um suporte traseiro.
17. Note for UK only: If the colors of the wires in the mains lead of this unit do not correspond with the terminals in your plug, proceed as follows:
 - a) The wire that is colored green and yellow must be connected to the terminal that is marked by the letter E, the earth symbol, colored green or colored green and yellow.
 - b) The wire that is colored blue must be connected to the terminal that is marked with the letter N or the color black.
 - c) The wire that is colored brown must be connected to the terminal that is marked with the letter L or the color red.
18. Este aparelho elétrico não deve ser exposto a pingos ou respingos e deve ser tomado cuidado para não colocar objetos contendo líquidos, tais como vasos, sobre o aparelho.
19. O comutador liga/desliga nesta unidade não interrompe ambos os lados da rede elétrica primária. Energia perigosa pode estar presente dentro do chassi quando o comutador liga/desliga estiver na posição desligado. O plugue de alimentação ou um dispositivo de união é usado como dispositivo de desligamento, o dispositivo de desligamento deve permanecer pronto para funcionar.
20. Exposição a níveis de barulho extremamente altos podem causar perda permanente de audição. As pessoas variam consideravelmente em susceptibilidade a perda de audição causada por ruídos, mas quase todo mundo vai perder algo da audição se exposto a ruído suficientemente intenso por tempo suficiente. A Administração de Segurança Ocupacional e Saúde americana (OSHA) especificou os seguintes níveis permissíveis de exposição a ruído:




Duração Por Dia Em Horas	dBA de Nível de Som, Resposta Lenta
8	90
6	92
4	95
3	97
2	100
1 1/2	102
1	105
1/2	110
1/4 ou menos	115

De acordo com a OSHA, qualquer exposição excedente aos limites permissíveis acima pode resultar em alguma perda de audição. Tampões de ouvido ou protetores sobre os canais do ouvido ou sobre as orelhas precisam ser usados ao operar este sistema de amplificação para poder evitar uma perda permanente de audição, se a exposição for em excesso aos limites acima estabelecidos. Para assegurar contra exposição perigosa potencial a níveis de alta pressão de ruído, é recomendado que todas as pessoas expostas a equipamento capaz de produzir níveis de alta pressão de ruído tais como este sistema de amplificação estejam protegidas por protetores de ouvido enquanto esta unidade estiver em funcionamento.

GUARDE ESSAS INSTRUÇÕES!

安全のための重要事項

警告: 電気製品を使用するときは、次の項目を含め、基本的な注意事項を常にお守りください。

1. 本書の指示内容をお読みください。
2. 本書は保管してください。
3. すべての警告に注意してください。
4. すべての指示に従ってください。
5. 本装置を水の近くで使用しないでください。
6. お手入れには乾いた布をお使いください。
7. 開口部をふさがないでください。メーカーの指示に従って設置してください。
8. ラジエータ、ストーブなど (アンプを含む)、発熱体の近くに設置しないでください。
9. 分極プラグや接地プラグの安全性を損なわないようにしてください。分極プラグの2つのブレードは、一方が他より幅広くなっています。接地式のプラグには2つのブレードと接地プラグがあります。幅広のブレードや接地プラグは安全のために付けられています。所定のプラグがコンセントなどに合わない場合、旧式のコンセントなどの交換について技術者に問い合わせてください。
10. 電源コードを踏んだり挟んだりしないように保護してください。特にプラグ、コンセント、装置から出る部分を保護してください。
11. 備品/付属品はメーカーのものを使用してください。
12.  カート、スタンド、三脚、ブラケット、テーブルなどは、メーカー指定のもの、または装置とともに販売されているものを使用してください。カートを使用するときは、カートと装置を動かしたときに横転などでケガをしないよう注意してください。
13. 落雷の恐れのある嵐のとき、または長期間使用しないときは本装置の電源を外してください。
14. 保守作業はすべて資格のあるサービス担当者に依頼してください。保守作業が必要になるのは、装置が故障した場合、たとえば、電源コードやプラグが破損、装置に液体がかかる。物が落ちる、雨など湿度の影響を受ける、正常に動作しない、落下した場合などです。
15. グランドピン (接地ピン) は決して取り外さないでください。フリーブックレット「感電と接地」を入手してください。装置の電源コードの横に記載されているタイプの電源にのみ接続してください。
16. 本製品をラックに載せる場合は、背面を支持するものがが必要です。
17. Note for UK only: If the colors of the wires in the mains lead of this unit do not correspond with the terminals in your plug, proceed as follows: a) The wire that is colored green and yellow must be connected to the terminal that is marked by the letter E, the earth symbol, colored green or colored green and yellow. b) The wire that is colored blue must be connected to the terminal that is marked with the letter N or the color black. c) The wire that is colored brown must be connected to the terminal that is marked with the letter L or the color red.
18. 電気機器に水がかからないようにしてください。花瓶など液体の入ったものを装置に置かないように注意してください。
19. オン/オフスイッチは、主電源のどちらの側も切断しません。オン/オフスイッチがオフ位置のとき、シャシー内部のエネルギー (高電圧) は危険なレベルにあります。主電源プラグまたは機器のカブラが切断装置になっています。切断装置はすぐに動作し使用できる状態にしておく必要があります。
20. 極めて高い騒音レベルは聴覚を永久に損なう原因になることがあります。騒音による聴覚障害の可能性は人によって異なりますが、十分に高い騒音を十分長い時間浴びた場合には、ほぼすべての人が何らかの障害を被ります。米国労働安全衛生庁 (OSHA) は、許容できるノイズレベル (騒音暴露レベル) を次のように定めています。

CE

1日当たりの時間	サウンドレベルdBA、スローレスポンス
8	90
6	92
4	95
3	97
2	100
1½	102
1	105
½	110
1/4 以下	115

OSHAによると、上記許容限度を超える場合は聴覚障害の原因になります。騒音が上記限度を超える場合は、永久的な聴覚障害を避けるため、このアンプシステムの操作時に、外耳道または耳全体にイヤプラグやプロテクタを装着する必要があります。高音圧レベルによる危険な状態を避けるため、このアンプシステムのような高音圧レベルを出力する機器に触れる人はすべて、本機を使用中はプロテクタにより聴覚を保護することをおすすめします。

本書は保管してください!

重要安全事项

警告：操作电器产品时，请务必遵守基本安全注意事项，包括：

1. 阅读说明书。
2. 妥善保管说明书。
3. 注意所有安全警告。
4. 按照要求和指示操作。
5. 请勿在靠近水（或其它液体）的地方使用本机。
6. 本机只能用于干燥布料擦拭。
7. 请勿遮盖任何通散热口。确实依照本说明书安装本机。
8. 请勿将本机安装在任何热源附近，例如电暖器、蓄热器件、火炉或其他发热电器（包括功率放大器）。
9. 请勿破坏两脚型插头或接地型插头的安全装置。两脚型插头有两个不同宽度的插头片，一个窄，另一个宽一点。接地型插头有两个相同的插头片和一个接地插脚。两脚型插头中宽的插头片和接地型插头接地插脚起着保障安全的作用。如果所附带的插头规格与您的插座不匹配，请让电工更换插座以保证安全。
10. 请勿踩踏或挤压电源线，尤其是插头、插座、设备电源输入接口或者电源线和机身连接处。
11. 本机只可以使用制造商指定的零件 / 配件。
12.  本机只可以使用与本机搭售或由制造商指定的机柜、支架、三角架、托架或桌子。使用机柜时，请小心移动已安装设备的机柜，以避免机会推翻造成身体伤害。
13. 在雷雨天或长期不使用的情况下，请拔掉电源插头。
14. 所有检查与维修都必须由指定的专业维修人员进行。如本机的任何形式的损伤都须检修，例如电源线或插头受损，有液体或物体落入机身内，曾暴露于雨天或潮湿的地方，不能正常运作，或曾掉落后损坏等。
15. 不得拔出接地插脚。请写信索取免费手册《Shock Hazard and Grounding》。使用前，请仔细检查确认所使用的电源电压是否匹配设备上标注的额定电压。
16. 如果本机装在机柜中，其后部也应给予相应的支撑固定。
17. **Note for UK only:** If the colors of the wires in the mains lead of this unit do not correspond with the terminals in your plug, proceed as follows:
 - a) The wire that is colored green and yellow must be connected to the terminal that is marked by the letter E, the earth symbol, colored green or colored green and yellow.
 - b) The wire that is colored blue must be connected to the terminal that is marked with the letter N or the color black.
 - c) The wire that is colored brown must be connected to the terminal that is marked with the letter L or the color red.
18. 本机不得暴露于滴水或溅水中。请勿将诸如花瓶等装有液体的物体放置于本机上。
19. 本机电源开关不能同时断开两端的电源，完全切断外部电源。因此当开关位于“OFF”位置时，本机外壳仍有可能带有触电的危险。电源插头或耦合器能够与设备或者电源容易分开，保证电源的完全切断，从而保证安全。
20. 声压级较高的噪音容易造成听力的永久性损失。因噪声而造成的听力损失程度，个体间的差异较大，但几乎每个人在声压级较高的噪音环境里一定时间，都会有不同程度的听力损失。美国政府职业安全与健康管理局（OSHA）就此规定了下列容许噪声级：

每天持续小时数	声压级 (dBA) 慢反应
8	90
6	92
4	95
3	97
2	100
1½	102
1	105
½	110
¼ 或更少	115


据 OSHA, 任何超出以上所允许的范围, 都会造成部分听力的损失。使用本功放系统时, 必须佩戴如耳塞等保护耳朵的器件, 防止长时间处于上述限制级以上的环境而引起永久性听力受损。本机运行时, 如果超过上述所规定的最大限制, 为了抵御较高的声压对于听受损所造成的潜在危险, 建议使用诸如功放系统等引起高声压级噪声的所有人均佩戴保护耳朵的器件。

请妥善保管本说明书！



중요 안전 지침

경고: 전기 제품 사용 시 다음 사항을 포함해 기본적인 주의 사항을 항상 따라야 합니다.

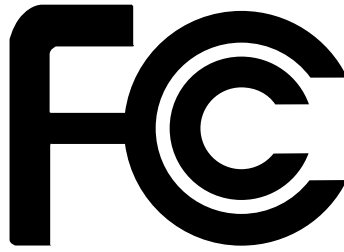
1. 이 지침을 읽어 주십시오.
2. 이 지침을 준수하여 주십시오.
3. 모든 경고 사항에 주의해 주십시오.
4. 모든 지침을 따라 주십시오.
5. 물기가 있는 근처에서 이 기기를 사용하지 마십시오.
6. 마른 헝겊으로만 청소해 주십시오.
7. 통풍구를 막지 마십시오. 제조업체의 지침에 따라 설치해 주십시오.
8. 라디에이터, 가열기, 난로 또는 열을 발산하는 기타 기기(앰프 포함) 근처에 설치하지 마십시오.
9. 극성 플러그나 접지형 플러그의 안전 용도를 무시하지 마십시오. 극성 플러그는 한쪽 날이 다른 쪽보다 더 넓습니다. 접지형 플러그에는 2개의 날과 1개의 접지 플러그가 있습니다. 넓은 날 또는 1개의 접지 플러그는 안전을 위해 제공됩니다. 제공된 플러그가 사용자의 콘센트에 맞지 않으면 구식 콘센트의 교체에 대해 전기 기술자에게 문의하십시오.
10. 전원 코드 특히, 플러그, 소켓 및 기기에서 나오는 지점이 밝히거나 집히지 않도록 보호하십시오.
11. 제조업체에서 제공하는 부착 장치/액세서리만을 사용하십시오.
12.  제조업체에서 지정하거나 기기와 함께 판매되는 카트, 스탠드, 삼각대, 브래킷 또는 테이블만을 사용하십시오. 카트 사용 시 카트/기기 결합물을 움직일 때 전복으로 인해 부상을 입지 않도록 주의해 주십시오.
13. 번개와 폭풍이 올 때 그리고 장기간 사용하지 않을 때는 이 기기의 플러그를 뽑아 놓으십시오.
14. 자격을 갖춘 서비스 요원에게 모든 서비스를 의뢰하십시오. 전원 공급 코드 또는 플러그가 손상되거나 액체를 었지르거나 기기 안에 이물질이 떨어뜨리거나 비 또는 습기에 기기를 노출하거나 정상적으로 작동하지 않거나 기기를 떨어뜨린 경우와 같이 기기가 손상된 경우에는 서비스를 받아야 합니다.
15. 접지 핀을 제거하지 마십시오. 당사의 무료 소책자인 “감전 위험 및 접지”을 우편으로 주문해 주십시오. 전원 공급 코드의 기기에 표시된 유형의 전원 공급 장치만 연결해 주십시오.
16. 이 제품을 장비 랙에 장착할 경우에는 후면 지지대를 설치해야 합니다.
17. **Note for UK only:** If the colors of the wires in the mains lead of this unit do not correspond with the terminals in your plug, proceed as follows: a) The wire that is colored green and yellow must be connected to the terminal that is marked by the letter E, the earth symbol, colored green or colored green and yellow. b) The wire that is colored blue must be connected to the terminal that is marked with the letter N or the color black. c) The wire that is colored brown must be connected to the terminal that is marked with the letter L or the color red.
18. 전기 기기가 비나 물방울에 노출되지 않도록 주의하고 꽃병과 같이 용액이 들어 있는 물체를 기기 위에 놓지 않도록 주의해 주십시오.
19. 본 기기의 ON/OFF 스위치는 양쪽의 주 기기 전원을 차단하지 않습니다. ON/OFF 스위치가 OFF 위치에 있더라도 새시 내부에 위험한 전기가 흐를 수 있습니다. 기본 플러그 또는 기기 커플러는 분리 장치로 사용됩니다. 분리 장치는 바로 사용 가능한 상태로 두어야 합니다.
20. 매우 높은 소음에 노출되면 영구적으로 청각이 손상될 수 있습니다. 소음으로 인한 청각 손상 가능성은 개인별로 매우 다르지만 장시간 매우 강한 소음에 노출되면 거의 모든 사람들에게 어느 정도의 청각 손상이 발생합니다. 미국 정부의 OSHA(작업 안전 및 건강 관리국)은 다음과 같이 용인 가능한 소음 노출을 규정하고 있습니다.



일별 지속 시간	소음 수준 dBA, 지속 반응
8	90
6	92
4	95
3	97
2	100
1½	102
1	105
½	110
¼ 이하	115

OSHA에 따르면 용인 가능한 위 제한 수치를 초과하여 노출된 경우 일부 청각이 손상될 수 있습니다. 위에 명시된 제한치를 초과하여 노출되는 경우 영구적인 청각 손상을 예방하려면 이 앰프 시스템 사용 시 귀마개 또는 귀 전체를 덮는 보호구를 착용해야 합니다. 잠재적으로 위험한 높은 음압에 노출되지 않도록 하려면 이 앰프 시스템과 같이 높은 음압을 생성할 수 있는 장비에 노출되는 모든 사람이 기기가 작동하는 동안 청각 보호구를 착용하는 것이 좋습니다.

이 지침을 잘 보관해 주십시오



FCC Compliancy Statement

This device complies with Part 15 of the FCC rules. Operation is subject to the following two conditions: (1) this device may not cause harmful interference, and (2) this device must accept any interference received, that may cause undesired operation.

Warning: Changes or modifications to the equipment not approved by Peavey Electronics Corp. can void the user's authority to use the equipment.

Note - This equipment has been tested and found to comply with the limits for a Class B digital device, pursuant to Part 15 of the FCC Rules. These limits are designed to provide reasonable protection against harmful interference in a residential installation. This equipment generates, uses and can radiate radio frequency energy and, if not installed and used in accordance with the instructions, may cause harmful interference to radio communications. However, there is no guarantee that interference will not occur in a particular installation. If this equipment does cause harmful interference to radio or television reception, which can be determined by turning the equipment off and on, the user is encouraged to try and correct the interference by one or more of the following measures.

- Reorient or relocate the receiving antenna.
- Increase the separation between the equipment and receiver.
- Connect the equipment into an outlet on a circuit different from that to which the receiver is connected.
- Consult the dealer or an experienced radio/TV technician for help
- Shielded cables must be used with this unit to ensure compliance with the Class B FCC limits.



MuseBox™ Operating Manual

Introduction

First off, thank you for purchasing a MuseBox. We sincerely hope that it will be a great music-making tool for you, and that it will provide you with many years of satisfaction.

MuseBox is a joint development between Peavey® Electronics and Muse Research, Inc. It is based on the technology developed for the Muse Research RECEPTOR hardware plug-in player. RECEPTOR is the standard of the industry for running virtual instruments and effects live, and is used on major concert tours, in professional music theater productions, on TV, and by composers of film and game soundtracks. With MuseBox, Peavey and Muse Research have taken the breakthrough technology of Receptor and made it easier to use, more compact, and more affordable.

MuseBox was designed to be an easy-to-use, comprehensive and versatile instrument and effects processor that works in a wide variety of musical situations. MuseBox includes a large number of sounds and effects built-in and ready to go, featuring software such as Universons MusePlayer, Peavey ReValver HP, Wave Arts MasterVerb 4 and TrackPlug 4, ForeFront TruePianos Amber Lite, Camel Audio Camel Phatt and Camel Space, MuVoice from MuTech, and much more.

All this software is pre-configured so that making music with it could not be easier: simply plug it in, turn it on, and play. However, that's just where the fun begins. You can easily create your own custom sounds and effects with the powerful graphical user interface that you can access by simply plugging in a mouse, monitor, and keyboard. And MuseBox is expandable using the CF card reader slot, letting you run entirely new virtual instrument and effects, making it arguably the most versatile music instrument or effects processor you've ever owned.

MuseBox has something for every musician. Here are some of the many ways you can use yours: As the ultimate sound module for use with any MIDI keyboard or controller.

- As a mind-blowing piano module for enhancing your digital piano's sound.
- As an amazing guitar effects processor for electric or acoustic guitars.
- As a vocal processor to give your voice fullness and clarity.
- As an astounding electric bass processor-like a DI box with processing!
- As an electronic drum module for providing punchy drum sounds live or in the studio.
- As a versatile effects processor for your recording studio or P.A. system.
- As an "all-in-one" device for processing both your voice and guitar at the same time.
- As a software-expandable device that will grow with you and your music.

This manual will help you get your MuseBox set up and working. We highly recommend that you register your MuseBox as soon as possible by visiting www.plugorama.com and taking advantage of the online tutorial videos and wealth of information available there.

So... let's jump in and start making music!

Getting Familiar: Unpacking and Setup

First, you are going to want to unpack your MuseBox and remove all the packing material. In your MuseBox package, you'll find the following:

1. Your MuseBox (of course).
2. The power supply and power cable.
3. A CD containing this manual and some other useful utility software.
4. The printed quick-start guide.

MuseBox is really easy to set up and get working:

1. Remove all the packing material from your MuseBox, and place it on a stable indoor surface with adequate ventilation where it won't get wet.
2. Plug the power supply connector into the back of the unit where it says "Power Supply."
3. Plug the power cord into an AC power wall socket and the other end into the power supply.

Note: MuseBox's power supply is auto-ranging and can be used anywhere in the world. All you need is the correct AC cable to connect to the power supply to your wall outlet.

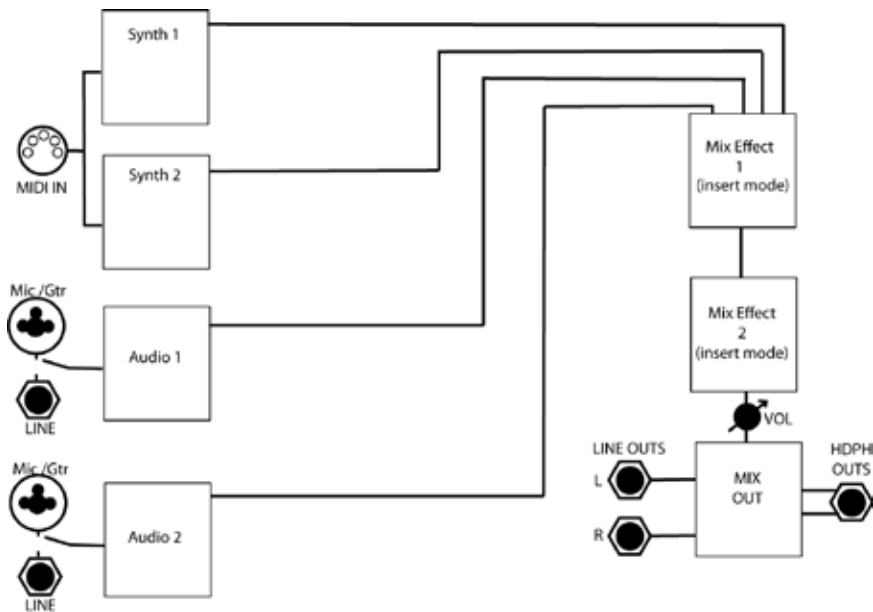
4. Plug your MIDI keyboard into the back, or your microphone into the bottom front panel input, or your guitar into the top front panel input.
5. Power it up by pressing the power button on the top right hand corner of the front panel.
6. Get ready to make some music!



Getting Familiar with MuseBox: Overview

To start, here are some general concepts about MuseBox.

MuseBox is a four channel device. It has two Synth channels that produce sampled or synthesized sounds in response to MIDI messages from your MIDI keyboard, and two Audio Input channels that process the audio from stereo or mono analog input signals. Each Synth channel can have a different virtual instrument program running to produce two entirely unique sounds at once, and each Audio input channel can have a different virtual effect program running to independently process the two incoming audio signal chains. MuseBox also has a mixer section that allows for two additional effect programs to process any or all of the four input channels.



MuseBox is capable of doing more than one thing at a time, which makes it truly unique! For example, you can play an acoustic piano sound using your MIDI keyboard, and simultaneously "mix in" and process the sounds of your keyboard's internal sounds through the inputs on the back of the unit, supplementing the sounds of your keyboard with the sounds of MuseBox!

Or, if you are a singer, you can plug your microphone in to your MuseBox and take advantage of the vocal processing capabilities it offers. It also lets you play one of the MuseBox synth sounds using your MIDI keyboard while processing your vocals simultaneously.

If you are a guitarist, you can process your guitar using the supplied amp-modeling and effects processor software. And since there is a second input channel available for guitar, you can have a friend play their guitar at the same time, or you want to sing and play guitar, you can simply plug in a microphone and process your vocals along with your guitar!

MuseBox is an incredibly versatile device. With a little exploration on your part, your MuseBox will become an indispensable musical tool, whether you're jamming at a friend's house, recording your first CD, or playing at the local pub!

So let's dive right in and explore the knobs, buttons, and jacks on your MuseBox!

The Front Panel

The MuseBox can be controlled using the buttons, control knobs, and 2-line LCD located on the front panel. MuseBox might have a couple of concepts that are new to you, so be sure to read this section in its entirety so you can get the most out of your MuseBox.



Front panel Controls and Functions

1. Power Button: Press once to turn on; press twice to shut it down completely. Since it can take a minute or so for the MuseBox to power up and initialize all your presets, instead of powering it up and shutting it down each time you use it you have the option of "putting it to sleep" when it is powered on by simply pressing the power button ONCE while the unit is powered up. This "suspends" the current state of your MuseBox, keeping your settings as they were but saving power until you're ready to continue from where you left off. To "wake up" the MuseBox, simply press the power button again and in a few moments you'll be ready to continue on. Should you ever want to reboot the unit, simply press the power button three times. Pressing and holding the power button will force an instant power down, but you should not do this unless the unit is completely unresponsive.

Note: Be sure to press the power button TWICE and wait until the unit turns off completely before removing power from the MuseBox. This ensures normal start up next time you apply power.

2. Master Volume Control: This control affects the output volume of the MuseBox in addition to controlling the volume heard in the headphones. When using it with an external P.A. or powered speakers, we recommend that you set this control to its maximum, and then adjust the gain on the amp or speakers to a comfortable listening or performance level. When using headphones, use this control to ensure that you are listening at a comfortable and safe listening volume. Note that this is the actual hardware output level of the unit and does not affect the metering either on the front panel or on the graphical user interface.

Note: Listening to music at high volumes for extended periods of time can cause temporary or permanent hearing loss. Always use common sense and take adequate precautions when listening to loud sounds or instruments so as to protect your hearing!

3. Headphone Output: The 1/4" front panel headphone jack lets you listen to your MuseBox in private. You can also use it as an additional set of analog audio outputs by connecting an appropriate stereo TRS jack to dual mono cable. The headphone outputs and main outputs have identical audio signals and audio quality.

4. Control Encoders: These controls let you change the menu items that are on the LCD. The top knob controls the menu items on the top line of the display, and the bottom knob controls the menu items on the lower line of the display. Pushing on either of these knobs "selects" displayed items in the LCD when a choice is presented on the LCD.

5. LCD: This blue LED backlit display shows the names of presets and TAGS, as well as listing parameters as well as MIDI activity (indicated by a note) and audio output levels (L / R meters) are displayed on the LCD.

6. Main Function Buttons: These eight buttons provide control the main functions of MuseBox and let you control and program the sounds or effects in the MuseBox. The buttons are described in detail in the next section.

7. Front Panel Input Gain Controls: This control sets the input gain of the front panel microphone/instrument input, with the top one controlling input "A," and the bottom one controlling input "B." These gain controls do not affect the line level inputs on the back; they only control the front panel input gain settings.

Note: Before connecting either an instrument or microphone to the front panel inputs, turn the GAIN control all the way counter-clockwise to its minimum setting to prevent overload or feedback audio signals that could damage speakers.

8. Front Panel Input Led Level Indicators: These three LEDs show you the level of the inputs (both front and rear). The green LED indicates signal presence (-40dB and above); the amber LED shows levels above -7dB; and the red LED indicates the onset of clipping (-1dB). For best fidelity, your input should trigger the green and yellow LEDs regularly and very rarely, if ever, trigger the red LED. If the red LED stays lit on a regular basis, your input level is too high and you should turn the gain control counter-clockwise until the red light is no longer lit.

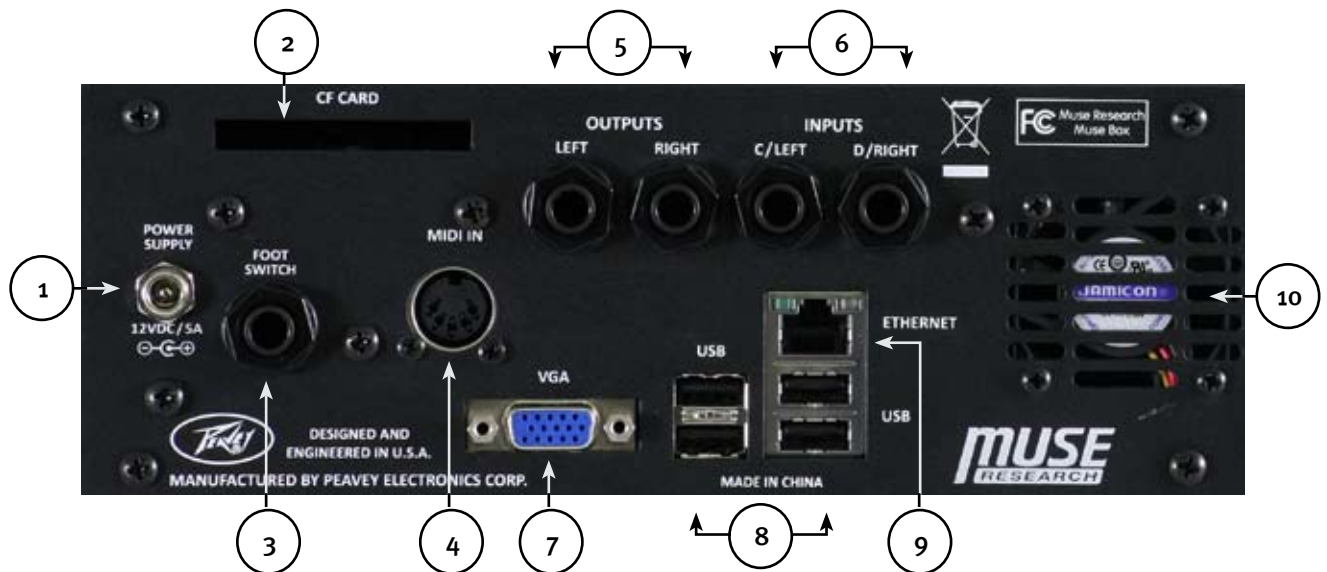
9. Phantom Power Switch and Indicator LED: When this switch is depressed, the 48VDC Phantom Power is applied to the Microphone jack to power condenser-type microphones. When the Phantom Power is active, the red LED above the switch will illuminate.

NOTE: You should reduce the output level of MuseBox or reduce the input gain of any amplifiers attached to the MuseBox outputs when turning on and off the phantom power, as it can cause a slight audio pop or thump to occur in the audio outputs.

10. Front Panel Microphone/Guitar/Bass Inputs (A and B): These two high-grade combination microphone/instrument input jacks feature a high impedance guitar preamp on the 1/4" jack section in the middle of the jack, and a balanced, low-impedance input (with optional phantom power ... see #9) for dynamic or condenser microphones. The top input is Input A; the bottom is input B. When selecting PLAY presets, the default input for your guitar is Input A on top, and the default input for your microphone is B on bottom.

Getting Familiar: The Rear Panel

Connecting your MuseBox to your mixer, your amplifier, your computer, or to other music gear is simple to do with the connections on the back. The rear panel also features a CF card expansion slot to add new virtual instruments and effects by simply popping in a CF card (available separately from Muse Research).



1. DC Power Input: This is where you connect MuseBox's 12-volt external DC power supply. For your safety, and to preserve the warranty on your product, use only the power supply adapter and cables provided with your MuseBox.

2. CF Card Slot: The CF card slot is used to run new virtual instruments and effects. Insert the card with the label side up and use care when inserting it to ensure proper alignment. Use only CF cards provided by Muse Research or certified for use with MuseBox, as only those cards will provide you with the appropriate level of performance.

3. Footswitch Input: The footswitch input accepts either a single 1/4" tip-sleeve jack footswitch (single action) or a double footswitch with a 1/4" tip/ring/sleeve connection. The footswitch input can be used for incrementing (or decrementing using a second footswitch) through patches in the unit, making it easy to change sounds or effects while performing. This is particularly valuable to guitarists who might not have any MIDI devices attached to their MuseBox, or keyboardists who do not have their hands free to select program changes from their keyboard while performing.

4. MIDI Input: This full-size 5-pin DIN connector is where you plug in your standard MIDI keyboard for controlling the virtual instruments in your MuseBox. If you want to connect more than one keyboard to this input, you can first connect to a MIDI merge box, and then connect to this input.

5. Audio Outputs: This is the Left (L) and Right (R) channel output of MuseBox for connection to your mixer, amplifier, or powered speakers. The outputs accept 1/4" unbalanced cables and should be connected to a high impedance input. You can adjust the output volume using the front panel volume control. The audio outputs will not drive speakers directly, you must connect your MuseBox to a mixer, or to a keyboard amplifier, or to an amplified speaker to hear sufficient output volume.

6. Audio Line Inputs (C and D): This input accepts a balanced, 1/4" tip/ring/sleeve (TRS) line-level device, such as the output of your keyboard or another sound module, a drum machine, an MP3 player, or the effects sends of your mixer. The rear input on the left is Input C; the rear input on the right is Input D; and if you want to use a stereo input, you would connect the left output of your device to Input C and the right output of your device to input D. Once connected, your line-level inputs can be processed using the audio effects slots or passively combined with the sounds being generated by virtual instruments running in MuseBox.

Warning: Do not connect the output of amplifiers or other "speaker level signals" to the MuseBox line inputs or damage to your MuseBox will result.

7. VGA Video Monitor Output: This is where you connect a VGA computer monitor to view the software graphical user interface of MuseBox, as well as to see the graphical user interface of the virtual instruments and effects that are running inside MuseBox. You do not need to connect it to a computer to see the software running inside MuseBox.

8. USB 2.0 Ports: Each port will accept a standard computer mouse, computer "ASCII" keyboards for controlling the graphical user interface of MuseBox, as well as device-compliant USB MIDI keyboard inputs or software license dongles such as the Pace iLok. You can attach up to 4 devices at once to these ports. The USB ports do not support external USB drives, hubs, or network adapters at this time.

Note: "Device Compliant USB MIDI devices" are required for use with MuseBox. All compliant USB MIDI devices are "plug and play" devices that do not require additional drivers or software to work. If the device requires special software to be installed, the USB MIDI hardware may still work, but it is not guaranteed to work with MuseBox since those types of devices are not "device compliant."

9. Gigabit Ethernet Port: This port is used to perform software updates or to connect to a laptop or desktop computer with an Ethernet cable. By connecting to your computer, you can view the graphical user interface ("GUI") of your MuseBox without having to attach a computer monitor to #7 above. However, you must first install the MuseBox Tools software onto your computer (see the supplied CD-ROM). The Ethernet port and the MuseBox Tools software is compatible with Macs or PCs and can be used with a WiFi network. See the website for more information about networking to your MuseBox.

10. Cooling Fan Exhaust Port: This keeps MuseBox running cool at all times. Please ensure unrestricted airflow around this exhaust port to ensure that your MuseBox performs reliably for many years to come.

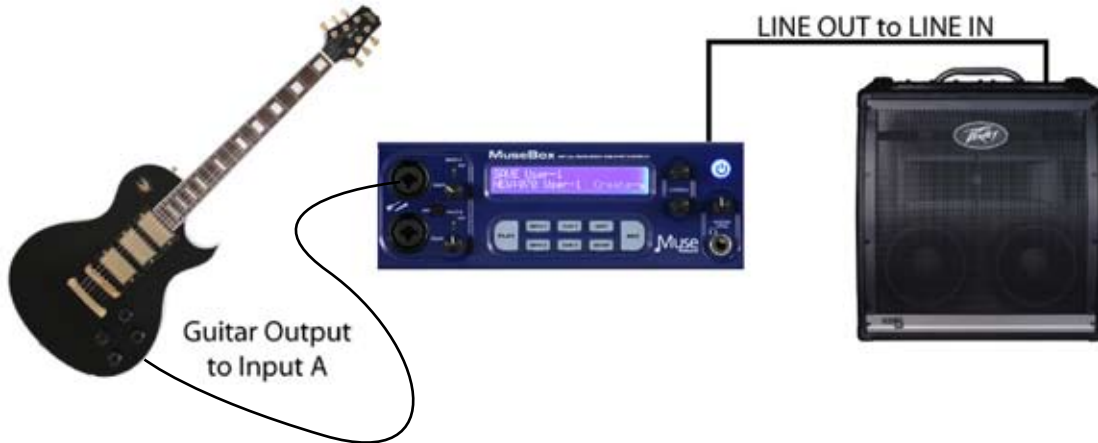
Getting Started: Typical Connections

Below are typical connections that you might want to use with your MuseBox:

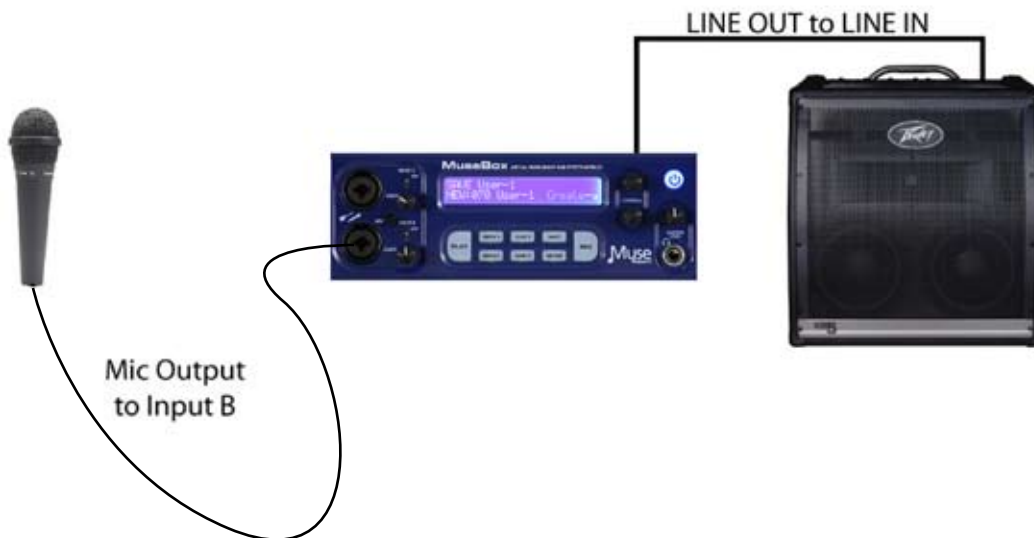
MuseBox as a sound module:



MuseBox as a Guitar Processor:



MuseBox as a Vocal Processor:



Making Music: The PLAY mode

MuseBox features **SoundFinder**, an easy and simple way to find the right preset for the instrument you have connected and the style of music you are making. SoundFinder works whenever you are selecting presets either on a global (PLAY mode) basis, or when you are selecting a sound or effect preset in a particular channel or "slot" (SNTH 1, SNTH 2, AUD 1, AUD 2, MIX 1, or MIX 2).



PLAY mode is the default mode when you power up your MuseBox. Simply press the PLAY button on the left side of the button field (if its not already lit) and turn the BOTTOM knob to select what category (TAG) you want to choose from, and then turn the TOP knob to select the sound or effect (preset) in that category that you want to hear. These "PLAY" presets affect the entire MuseBox setup – the two SYN channels, the 2 AUD channels, and the 2 MIX effect slots.

TAGS are the "categories" in SoundFinder that allow you to organize your sounds and effects. For example, you might have an "Acoustic Pianos" TAG, that contains all of your various acoustic pianos for playing with your MIDI keyboard. You might have an "Guitar Clean" Tag, which contains your various clean sound amp models and effect presets when you plug your electric guitar into the front panel input. And you might have a "Vocal FX" Tag that contains the appropriate vocal effects when you plug your microphone into the front panel microphone input.

*Note: TAGS are organized into two primary main groups: **sounds** for playing with a MIDI keyboard, and **effects** for processing the incoming audio from one of the inputs. Sounds are simply listed with the description of the TAG, and effects are preceded by the letters **FX**. Within the FX group you have different sub-categories depending on what you are processing, like electric guitar, acoustic guitar, vocals, etc.*

TAGS are also user-definable, meaning you can create your own categories in which to organize the sounds to your liking, or even use a Tag to define a set list, where each preset in that particular Tag has all the sounds you are using for a particular gig, or a certain set list for a gig. More on that later.

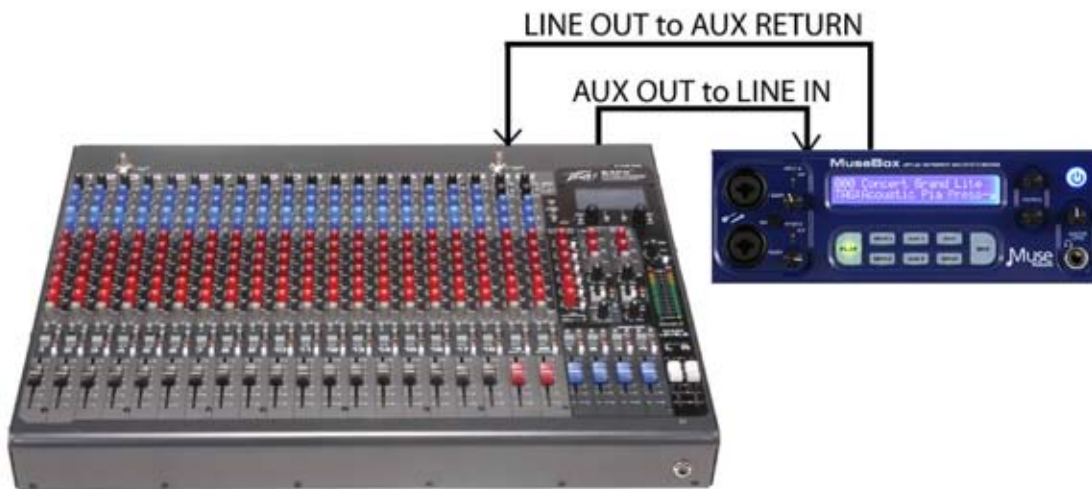
So you might have a "Wedding Set 1" Tag, or a "School Play Act 1" Tag, or a "Jam Night" Tag, each loaded with the sounds or effects that pertain to that particular event. Remember, Tags at the PLAY level save the entire MuseBox setup, whereas Tags in the individual channels save single instrument or effect channel presets for the SYN1, SYN2, AUD1, and AUD2 channel "slots".

Note: To create a unique Tag, or to RENAME a Tag, you need to have access to the MuseBox GUI using an LCD monitor, mouse, and keyboard, or use the supplied MuseBox remote software and connect the MuseBox to your computer using an Ethernet cable.

MuseBox as an Drum Module processor:



MuseBox as an Effects processor:



PRESETS are the unique sounds or effects that are in a particular Tag. In your Acoustic Pianos Tag, you might have presets like Concert Grand Piano, Studio Grand, Rock Piano, Jazz Piano, etc. These different pianos can be selected by turning the top knob, and pressing the knob to load.

Note: The same preset may be associated with several different Tags. For example, the "Rock Piano" preset might reside in the "Acoustic Pianos" Tag, as well as the "Jam Night" Tag you created.

PLAY mode makes it super simple to use all the functionality of your MuseBox quickly and easily. Even someone completely unfamiliar with music technology can use it! However, it is valuable to know how the different sounds and effects are organized so you can quickly find the preset you are looking for.

You already know MuseBox does two basic things: it **generates** sounds using a MIDI keyboard or controller, or it **processes** sounds coming from an audio input of some sort. Because of this, there are two main categories of TAGS: **SOUNDS** and **EFFECTS**.

The Tags for **SOUNDS** simply state the type of sounds to expect in that particular Tag. For example, the "Acoustic Pianos" Tag has all the various acoustic piano sounds, the "Strings" Tag has all sampled string instruments inside it.

The Tags for **EFFECTS** all have the letters **FX** before the effect category. Therefore, to hear a preset with FX in its Tag, **you have to have an audio input**. In the realm of effects presets, there are presets that are designed specifically for use with different pre-assigned inputs, as well as "generic" effect categories for specific types of effects.

Here are some example Tags for the synth and sampled sounds:

TAG Name	TAG contains:	Expected Input:
TAG: Acoustic Guitars	Synth / Sampled Sounds	MIDI keyboard, controller or interface
TAG: Acoustic Pianos	Synth / Sampled Sounds	MIDI keyboard, controller or interface
TAG: Brass	Synth / Sampled Sounds	MIDI keyboard, controller or interface
TAG: Electric Basses	Synth / Sampled Sounds	MIDI keyboard, controller or interface
TAG: Electric Guitars	Synth / Sampled Sounds	MIDI keyboard, controller or interface
TAG: Electric Pianos	Synth / Sampled Sounds	MIDI keyboard, controller or interface
- etcetera -		

Here are some example Tags for effects. Note they indicate what they are intended to process:

TAG Name	TAG contains:	Expected Input:
TAG: FX Acous Guitar	Effects for Acous Gtrs	Input A on front panel
TAG: FX Elec Guitar	Effects for Acous Gtrs	Input A on front panel
TAG: FX Vocals	Effects for Vocalists	Input B on front panel
TAG: FX PA Effects	Effects for use with Mixers	Inputs C and D on rear panel
TAG: FX Kbd + Gtr	Synths + effects at once	MIDI and Input A

Specific Effects Types have presets that indicate what input the effect expects to see:

TAG Name	TAG contains:	Expected Input:
TAG: FX Reverb	Reverb effects only	Any Audio Input (varies by preset)
TAG: FX Spectral	Chorus, flanger, etc. effects	Any Audio Input (varies by preset)
TAG: FX Dynamics	Compression, limiter, gates	Any Audio Input (varies by preset)

Inside the effects-specific Tags you'll find presets organized by input type, i.e. inside the TAG: FX Reverb, you might have GTR Large Hall, VOC Large Hall, and AUX Large Hall, where the GTR preset processes a guitar on Input A, the VOC preset processes a microphone on Input B, and an AUX preset processes line level inputs from an external device (keyboard, mixer, etc.) on inputs C & D.

Using PRESETs in the PLAY mode

Now that you have an overview of the different SoundFinder TAGs and what they provide, let's move ahead and select a couple of presets.

MuseBox as a Synthesizer/Sound Module

1. Connect your keyboard to the MIDI input as described in the "Getting Started: Typical Connections" section under "MuseBox as a Sound Module".
2. Power up MuseBox (if it is not already on). If not already lit, press the **PLAY** button.
3. Turn the BOTTOM knob until the "TAG:Electric Pianos" is displayed. Press the BOTTOM knob to select the preset called "Electric Piano".



4. Play your controller keyboard. Feel free to browse the other Electric Piano presets and enjoy the high-quality sampled sounds. Simply turn the top knob and press the bottom knob to load another preset.
5. Now let's change to a different Tag and browse another category. Turn the bottom knob until it says "TAG: Acoustic Pianos". Turn the top knob to select the piano "Concert Grand Lite." Press the encoder to load the sound. Enjoy the richness and detail of a sampled piano that is typically four times the size of most pianos found in keyboard workstations! For the ultimate piano, try "Concert Grand Big" Its massive, so it takes a few moments to load, but it's worth the wait!

MuseBox as an Electric Guitar Effects Processor/Amp Modeller

1. Power up MuseBox if it's not already on.
2. Plug the 1/4" guitar cable from your guitar into **Input A** of MuseBox as shown in the "Getting Started: Typical Connections" section describing "MuseBox as a Guitar Processor."
3. Turn the BOTTOM knob and select the Tag labeled "FX: Elec Gtr":



4. Select the "GTR Clean 6505+" preset and press the encoder to load the preset.

5. Play your guitar and adjust the GAIN control for Channel A so that the green and yellow LEDs light on a regular basis, but the Red LED does not light even when playing hard.

Feel free to browse the other Guitar Effect presets; especially in some of the other TAGs since there are many different sounds available to you. Enjoy the 32-bit floating point processing and 24-bit audio output that makes your guitar sound amazing!

MuseBox as a Vocal Processor/Effects box

1. Start by plugging the XLR-type microphone cable from your microphone into Input B of MuseBox as shown in the "Getting Started: Typical Connections" section describing "MuseBox as a Vocal Processor." If your microphone requires +48V Phantom power, press the button labeled "48V" next to the Input B label.

2. Power up MuseBox if its not already on. If it isn't already lit, press the **PLAY** button.

3. Turn the BOTTOM knob and select "TAG: FX: Vocal". Select the preset "VOC Pop Vocal" using the top knob and push the knob to load. Sing in to your microphone and enjoy the high quality processing of your vocals. Feel free to browse the other Vocal processing presets and enjoy how MuseBox enhances the sound of your own voice.



Effects that are typically only found in high-end professional recording studios are now yours to use any time you like!

Selecting Individual Synth Presets

PLAY mode lets you instantly select factory presets using SoundFinder, making MuseBox incredibly simple to use. But what if you want to layer two sounds together, or make your own custom preset consisting of different effects on different inputs? Well you can make your own preset easily based on the presets that are in MuseBox. You can either start by modifying an existing **PLAY** preset, or start from scratch and build your own.

To modify an existing **PLAY** preset, simply press the SNTH 1, SNTH2, AUD1 or AUD2 buttons to select the channel you want to modify, then change the Preset for that particular channel. This type of modification is particularly useful when you have a PLAY preset that has both a keyboard sound and a vocal effect working simultaneously, and you want to change one sound or effect without changing the other.

We can also create a new preset, starting from scratch:

1. First, we want to clear out the system of any presets that are already loaded. To do this, turn the bottom knob counter-clockwise until you see Tag: (none) and (New Empty Preset) as the preset name. Press the encoder button to load this empty preset. The display will show this:



2. Now let's select a Synth preset into one of the two Synth channels. With the PLAY mode lit, we press the **SNTH 1** button. You'll notice it too says (Empty) and Tag: (none).



Turn the bottom knob to find the sound you want. For example, let's choose "Electric Piano 1" from the "TAG: Electric Pianos." Press the knob to load it.

3. Now we'll layer that with another sound—say a pad synthesizer. To do this, we press the SNTH 2 button and load a different sound. Select "Analog Pad 2" from the "TAG:Synth Pads" category. Press the knob to load this preset. Now press the "PLAY" button to hear both sounds combined together.



4. What we've done is layered the Electric Piano 1 and the Analog Pad 2 sounds together, which creates an entirely new sound. You can adjust the volume of either sound by pressing MIX and either SNTH 1 or SNTH 2 to adjust the Electric Piano 1 or Analog Pad 2 volume level respectively.

5. Pressing either SNTH 1 or SNTH 2 solos just that one sound. If you want to SAVE this combination of sounds, simply press and hold the EDIT button, and you can save this preset to the USER TAG.

Splitting Two Sounds Across a Keyboard

Once you have both a SYN1 and SYN2 sound selected, it is easy to turn those two sounds into a "SPLIT" where one sound plays in one-half the keyboard, and the other sound plays in the other half.

1. While in PLAY mode, press the SYN1 button, *and while holding that button*, press the SYN2 button. You'll see the LCD display change to the following:



Voila! Now we have Electric Piano 1 preset (SYN1) playing on the left-hand side of the keyboard, and Analog Pad 2 (SYN2) playing on the right side of the keyboard, and the transition point between the two sounds is the default C3.

NOTE: In Split mode, SNTH 1 is always on the left side of the keyboard and SNTH 2 is always on the right side of the keyboard.

2. To move the Split Point, simply rotate the bottom encoder until it displays the note name of where you want the split to be. C3 is middle C, C2 an octave below that, and C4 is an octave above.

3. If you want to SAVE this combination of sounds, simply press and hold the EDIT button to save this preset to the USER TAG. Turn either encoder to select a preset location to write over, or save to a new preset location using the default name provided by MuseBox.

Selecting Individual Effect Presets

Now let's make your own custom preset consisting of different effects on different audio inputs. Say, for example we wanted to play acoustic guitar and have some chorus on the guitar sound, and sing with a little a bit of compression on our vocal.

1. First, press the "PLAY" button. Now, since we want to start from scratch, first turn the bottom knob counter-clockwise until you see "Tag: (none)" and "(None)" as the preset name and then press the bottom encoder button to clear out all the previous settings.



2. Next, we press the PLAY button and then select AUD1 channel. The default input assignment is Input A, so this is where we will plug in our guitar and assign the chorus effect. When we clear out the system by loading an empty preset, the AUD1 channel is set to off, so it appears like this:



NOTE: The MuseBox defaults are for AUD1 to be assigned to INPUT A, and AUD2 to be assigned to INPUT B. These assignments can be changed by pressing either the AUD 1 or AUD 2 button, and then pressing the SETUP button, which allows you to change the assignments to any of the available inputs.

*NOTE: Please be aware that because MuseBox is only a two-channel device, so you can only use the front inputs **or** the rear inputs at the same time. You cannot simultaneously process both the front panel and the rear panel inputs. However, you can bring in a signal on the rear panel inputs and have them mixed passively with the front panel inputs, which is great if you have an MP3 player or drum machine that you want to mix in with what you are processing with the front panel inputs*

3. Turn the gain control to minimum on Input A and plug in your guitar. Turn the bottom encoder to select "TAG FX Spectral" and then turn the top knob to select the preset "Ac. GtrPhase1" Press the encoder button to load the patch. Of course if there is a different chorus you'd like to use on the guitar, feel free to select it now.



4. Bring up the gain on Input A, and verify that the green and yellow level indicators light on a regular basis, but the Red indicator never illuminates.

5. Now it's time to plug in the Microphone into Input B, and select an appropriate compression effect on that input. Turn the gain control to minimum, plug in the microphone, and if it is a condenser microphone that requires 48V phantom power, press the switch to apply phantom power.

6. Now we want to select an appropriate preset for use with the microphone signal. Press the AUD2 button, and you will see that the input is turned off:



7. Now turn the bottom knob to select the "TAG: FX Vocal", and select the preset "Smooth Lead Vox."



8. Now press the PLAY button to hear both effects simultaneously. Pretty cool, yes?

8. Now bring up the gain on Input B, and adjust the input levels so that the green and yellow indicators are lit on a regular basis, but not the red one.

9. Press the PLAY button and you will now hear BOTH the guitar and the vocal at the same time. If you want to SAVE this combination of effects and input assignments, simply press and hold the EDIT button, and you can save this preset to the USER bank by simply pressing the encoder button:



The MIX Button and Adding MIX Effects

Its easy to adjust the levels of the individual synth or audio input channels you are processing, or add some overall effects to your sounds. This is done by pressing the **MIX** button on the front panel.



The MIX section allows you to adjust the volume and panning of the main outputs, or adjust the channel volume on any of the SNTH or AUD slots, as well as configuring insert or send effects using their factory presets.

When you are in **PLAY** mode, pressing the **MIX** button lets you adjust or see the following:

Master Volume: Adjust the main output mixer volume.

Master Pan: Adjust the left or right panning of the main output.

Main Output Meters: View the output levels on separate L and R meters.

With the MIX button pressed, you can also load two separate effects into the mixer channel, allowing you to perform additional processing on any source, whether it is a synth or an audio input.

Here are the parameters for the effects you can control in the MIX section:

- Effects 1 Tag: Select the effects preset category of Effect 1.
- Effects 1 Preset: Select the Preset within the current Tag for Effect 1.
- Effects 1 DRY/WET amount: Adjust overall Effect 1 amount.
- Effects 1 Mode (either INSERT, or SEND): Change signal path of Effect 1.
- Effects 2 Tag: Select the effects preset category of Effect 2.
- Effects 2 Preset: Select the Preset within the current Tag for Effect 2.
- Effects 2 DRY/WET amount: Adjust over all Effect 2 amount.
- Effects 2 Mode (either INSERT, or SEND): Change signal path of Effect 2.
- Passive Mix C+D: Mixes inputs C and D (unprocessed) with the main outputs.

MIX also allows you to adjust the levels and panning of any of the individual channels inside MuseBox. For example, to adjust the volume of the SYNTH 1 channel, simply press MIX and then SNTH 1:



When you select SNTH 1, SNTH 2, AUD 1 or AUD 2, the MIX menu allows you to do the following:

- Adjust Volume for Synth 1 / Synth2 / Audio 1 / Audio 2
- Adjust Panning for Synth 1 / Synth2 / Audio 1 / Audio 2
- View the Output Meters for Synth 1 / Synth2 / Audio 1 / Audio 2 channels

You can configure the mixer effects as "INSERTS" (all signals go through the effects) or "SENDS" where the amount of the effect is variable by channel. If you have configured a mixer effect as a "SEND" effect, then you can adjust the amount of that effect by pressing the MIX button and the channel you are interested in. Just after you see the output meters, you will see the following parameters become available:

- FX1 Send amount for the selected channel (ONLY IF Send FX 1 is enabled).
- FX2 Send amount for the selected channel (ONLY IF Send FX 2 is enabled).



If there are no MIX effects configured as "SEND" effects, then the SEND menu for that effect will say: (Not Available).

Saving the Presets You've Created

Any new preset you create, as well as any modifications to the factory presets can quickly be saved from the front panel. Always be sure to save any changes you make as they are NOT retained when you turn off the power!

To save a preset, simply **PRESS** and **HOLD** the **EDIT** button. You have the option to "save over" an existing preset, or create a **NEW** one (labeled as USER-X, where X is the last saved user preset number plus one)



Simply use the bottom knob to select the location you want to save, and then press the bottom encoder to either create (if "new") or save (if writing over) the preset. Writing a preset takes a moment, after which time it will say "Created" on the display. All naming is automatic, but if you want to give them specific names you can do so using the Graphical User Interface.

If you change your mind and decide not to save the preset, simply hit the PLAY button to exit the SAVE screen. Remember, presets can be renamed using the Graphical User Interface.

Verifying Your MIDI Connection:

What do you do if you have your keyboard connected and you think you should be hearing sound, but you don't? Just follow these simple steps:

1. Verify your MIDI keyboard OUTPUT jack is connected to MuseBox INPUT jack.
2. Make sure there is a synth PRESET selected in PLAY mode on MuseBox.
3. Verify the master volume on the front of the unit is turned up.
4. Press the SETUP button to turn on the MIDI monitor. Play a note, and if it doesn't display on the system, then your keyboard is not transmitting MIDI or it is improperly connected.
5. If MIDI data is displayed, make sure the MIX levels have not been turned down.

Selecting Presets at a Gig

When performing with MuseBox, you'll most likely want to quickly move from preset to preset on stage without having to touch the MuseBox itself. This is easily accomplished either by sending MIDI Program Change messages to MuseBox from your MIDI keyboard, or by connecting a standard momentary footswitch to the rear panel footswitch jack.



If you have a MIDI keyboard attached, you can send a MIDI program change message and MuseBox will load the corresponding presets in that particular TAG. If you change to a different TAG, then your program changes will select presets within that new TAG.

You can easily create a custom named TAG before your gig using the Graphical User Interface and then TAG the presets of interest to reside in that TAG. If you don't have the GUI handy, you can simply save the presets into the USER TAG and select them there.

If you want to move back and forth through the preset list, you can connect a 1/4" stereo to dual-mono breakout cable to the footswitch jack and connect TWO footswitches to the rear panel. One switch will allow you to increment through the list (increasing the preset number with each push of the switch) and the other switch will allow you to decrement through the list (decreasing the preset number with each push of the switch).



In either case, each time you press the footswitch, the next (or previous) preset will load immediately. This function is ideal for guitarists who might want to move through different guitar effects during a set without having to take their hands off their guitar to change patches.

Editing Virtual Instruments or Effects

The virtual instruments and effects in MuseBox are intended to be edited from their Graphical User Interfaces which you can see when you connect an LCD monitor to your MuseBox, or when you use the MuseBox Remote software with your Mac or PC through a network.

However, you can edit some of the key parameters on a plugin from the front panel by pressing the EDIT button. The **EDIT** mode lets you adjust up to eight pre-defined editable parameters per virtual instrument or effect.

To edit a virtual instrument or effect, first you need to select the channel you want to edit. You do this by simply pressing the SNTH1, SNTH2, AUD1, or AUD2 channel from the front panel.

In the case of MusePlayer, the default sound generating plugin in MuseBox, the parameters you can adjust are:

- | | |
|-------------------------------|-----------------------------------|
| 1. Amplitude Envelope Attack | 5. Master Filter Cutoff Frequency |
| 2. Amplitude Envelope Decay | 6. Master Filter Resonance |
| 3. Amplitude Envelope Sustain | 7. Filter Cutoff |
| 4. Amplitude Envelope Release | 8. Filter Q |

For ReValver™ HP™, the default amp modeling plugin in MuseBox, the parameters you can adjust are:

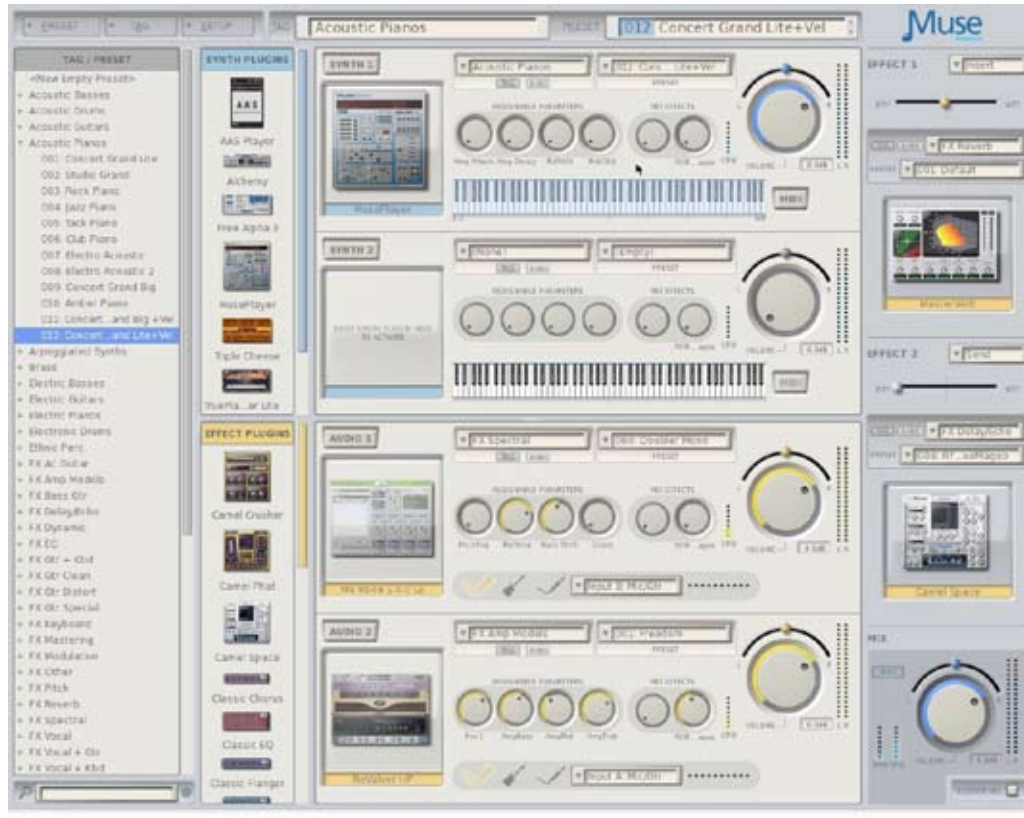
- | | |
|------------------|------------------|
| 1. PreAmp 1 Gain | 5. Reverb Mix |
| 2. Bass EQ | 6. Presence |
| 3. Mid EQ | 7. Master Output |
| 4. Treble EQ | 8. PreAmp 2 Gain |

MIDI Learn and Editable Parameters

MuseBox supports "MIDI Learn" which allows you to assign various MIDI-controllable parameters to various MIDI continuous controllers. This feature requires you to use the Graphical User Interface, and as such it is not covered in this quickstart guide, so please consult the website for more information. However, it is important to realize the first eight parameters that are assigned using the MIDI Learn function show up as the first eight parameters in when the EDIT button is lit.

Getting Started: Using the MuseBox Graphical User Interface

The MuseBox Graphical User Interface (GUI), lets you see what is happening inside your MuseBox, as well as letting you use a keyboard and mouse to make edit the factory presets or make new ones. To view the MuseBox GUI, simply connect a standard computer VGA monitor to the VGA output on the rear of the unit, and a USB mouse and USB QWERTY keyboard to the USB Port. You can also see this interface by networking to your Mac or PC. For more information on how this is done, please visit the website. The Graphical User Interface will appear on your screen like this:



Exploring the GUI: The PRESET Menu Tab

In the top left-hand corner, you'll see the PRESET Tab. Here you can create a new empty preset, or save an existing preset that you've edited, or use SAVE AS to save your changes as a new preset. You can also rename, or delete an existing preset using the menu items in this tab.

Exploring the GUI: The TAG Tab

Next to the Preset Tab menu is the TAG Tab, which lets you Add a new TAG, Remove an existing Tag, or Rename a Tag as something different. Note that to Add a new Tag to your preset, simply select an existing Tag from the drop down menu, or type the name of a new Tag and click OK.

Exploring the GUI: Tags/Presets

On the left hand side of the screen you'll see a column with the heading **Tags/Presets**. These are just like the Tags and Presets you see when you have the PLAY button pressed on the front panel of your MuseBox, except here you can see ALL the Tags and Presets at once!

Each TAG has a small Arrow that you can click to reveal all the Presets associated with that particular Tag. To load a preset in a Tag, simply click on the preset and the preset will load.

Tip: When the contents of a Tag are displayed, you can select presets in that Tag by using the UP/DOWN arrows on your QWERTY keyboard. This is a great way to quickly audition sounds.

Once you select a Preset, you will see the name of the preset and tag appear at the top of the center section of the screen. This lets you know that the preset is loaded as well as what virtual instruments or effects are associated with that preset.

Exploring the GUI: Synth / Effects Selection Area

Just to the right of the Tags/Presets menu you'll see two zones labeled "Synth Plugins" and "Effects Plugins." This is where you can choose which synth or effect to load. Each synth or effect has a small picture and the name of the synth or effect. There are two scroll bars to the right so you can scroll through the available synths and effects.

Main Rack Channels or "Slots"

In the center of the GUI is a large area that constitutes a virtual "rack" for running your virtual instruments and effects. There are two "synth" channels or "slots," and two "effect" slots.



To activate a synth virtual instrument, simply click on the instrument, then drag and drop it into one of the channels in the main rack. The synth will load and is ready to respond to MIDI.

Once a virtual instrument is loaded, you can select the patches that are in the instrument using the drop down menus located in the center of the channel. Note that there are two buttons below the left-most menu area, one labeled **TAG** and one labeled **BANK**. This allows you to select either presets that have been organized with TAGS in the synth itself, or by using the more conventional factory BANK organization found in all synths and effects.

Synth Slot Controls



Descriptions of all the Synth Slot controls are as follows:

1. TAG or BANK selector: Drop-down menu that lets you browse and select any of the TAGs or internal factory BANKs associated with this particular synth. Selecting the top-most **NONE** item will remove the synth from the rack and empty the channel.

2. TAG/BANK Buttons: Let you select either TAG mode (where the presets are organized by TAGs) or BANK mode (where the factory default banks are shown).

Tip: You can browse banks and tags without having to open the drop-down menu by simply resting the mouse indicator on the field, and then using your scroll wheel on your mouse to move through the items in the list.

3. Preset selector: Drop-down menu that lets you browse and select any of the presets in the currently selected TAG or BANK.

4. Synth Graphical Editor: Click on the icon of the synth you have loaded and the interface of that synth will appear. You can then manipulate all of the controls of the synth using your mouse.

5. Assignable Parameters: These four knobs are "assignable parameters" which are the first four parameters that you assign using the MIDI Learn function.

Tip: You can move all the knobs in the MuseBox GUI by clicking and dragging the knob in a circular fashion, or by simply resting the mouse indicator on the knob and using your mouse scroll wheel to rotate the knob.

6. MIX Effects: These knobs adjust the amount of signal from this channel to be sent to the SEND EFFECT in the mixer section. Note that there must be an effect loaded in the MIX section and configured as a "SEND" effect for these knobs to become functional.

7. CPU indicator: This meter shows the relative load on the CPU in real time from this particular plugin. Playing more notes at one time will increase the CPU load.

8. Keyboard Range: Shows the current playable range of this particular synth. Allows you to see splits or assigned ranges easily. Click on the left hand side of the keyboard to change the lower range, and click on the right hand side of the keyboard to change the top range.

9. MIDI Button: Lets you open up the MIDI FILTER page. The MIDI Filter page lets you re-assign MIDI channels, adjust the transposition of the channel, change the note range and velocity range of the plugin, and activates the MIDI monitor that displays all the incoming MIDI information.

10. Channel Output Pan Control: Adjusts the output between the left and right channels.

11. Channel Output Volume Control: Adjusts the relative level of this channel's output. The output level from nominal is indicated numerically in decibels in the small display to the right of the volume control to allow precise volume settings (you can use your mouse scroll wheel for this).

12. Channel Level Meters: These peak-reading meters show you the instantaneous volume level coming from the output of the channel. Reduce the output volume control if the red segments at the top of the meter illuminate. Clipping conditions will cause the top-most segment to glow red and remain red until you click on the segments to reset the meter.

Audio Input Slot Controls



Descriptions of all the Audio Slot controls are as follows:

- 1. TAG or BANK selector:** Drop down menu that lets you browse and select any of the TAGs or BANKs associated with this particular effect. Selecting the top-most **NONE** item will remove the plug-in and empty out the channel.
- 2. TAG / BANK Buttons:** Lets you select either TAG mode (where the presets are organized by TAGs) or BANK mode (where the factory default banks are shown).
- 3. Preset Selector:** Drop down menu that lets you browse and select any of the presets in the currently selected TAG or BANK.
- 4. Effect Graphical Editor:** Click on the icon of the effect and the interface of the effect itself will appear. You can then manipulate all of the controls of the effect using your mouse.
- 5. Assignable Parameters:** These four knobs are "assignable parameters" which are the first four parameters that you assign using the MIDI Learn function.

Tip: You can move any of the knobs in the MuseBox GUI by clicking and dragging the knob in a circular fashion, or positioning the mouse tip on the knob and moving your mouse scroll wheel.
- 6. MIX Effects:** These knobs adjust the amount of signal from this channel to be sent to the SEND EFFECT in the mixer section. Note that there must be an effect plugin active in the MIX section to hear an effect, and that mix effect must be in SEND mode for this effects send knob to work.
- 7. CPU Indicator:** This meter shows the relative load on the CPU in real time from this particular effect. Some effects require more processing as the volume gets louder, most don't.
- 8. Input Selection Indicator:** Shows the current input selected and detected by the MuseBox. From left to right the icons are: Mic, Instrument, and Line input.
- 9. Input Selector:** Lets you select one of the physical inputs on MuseBox. You can select an individual channel, like Input B Mic/Inst, or a pair of channels, like Line Inputs C+D.

Note: inputs between the front and rear of the units are mutually exclusive: if you use the front panel inputs for anything, then the rear panel inputs are not available for processing and vice versa. However, you can use the front panel inputs and also bring two line level inputs into the MuseBox on the rear inputs and mix them passively with the Passive mix function described later.
- 10. Input Level indicator:** Indicates the input level received by the unit. Note that it is possible to clip the inputs of the unit even when the output is low, resulting in distorted sound. So it is *imperative* to ensure that your input levels do not cause the red segments of this meter (or the red LED on the front panel) to light continuously or your sound will be distorted.
- 11. Channel Output Pan Control:** Adjusts the output between the left and right channels.
- 12. Channel Output Volume Control:** Adjusts the relative level of this channel's output. The output level from nominal is indicated numerically in decibels in the small display to the right of the volume control to allow precise volume settings (you can use your mouse scroll wheel for this).
- 13. Channel Level Meters:** These peak reading meters show you the instantaneous volume level coming from the output of the channel. Reduce the output volume control if the red segments at the top of the meter illuminate. Clipping conditions will cause the top-most segment to glow red and remain red until you click on the segments to reset the meter.

Note: If you make any changes to a synth, effect or PLAY level preset, be sure to SAVE your work before loading a new presets, or your changes will be lost!

Exploring the GUI: The Mixer Section

Now that you know how to select different synths, effects and their presets, it is time to craft the overall sound using the MIX section.

The MIX section consists of two slots for additional effects, as well as the master volume and pan controls. These slots operate just like the audio input slots; simply drag the effect of interest into the slot to activate it.

The effects slots are configurable either as an **INSERT** effect, or as a **SEND** effect. There is a drop-down menu next to each effect slot that allows you to select the mode you want.

INSERT EFFECT MODE: In INSERT mode, all of the audio coming from the synths and audio inputs are routed THROUGH the effect you are running in the MIX section. This means that all the signals are effected at the same time, which is really useful if you want to add some reverb to your overall sound, or if you want to insert a limiter to prevent the signal level from overloading the inputs of your amp or PA system.

NOTE: In INSERT mode, 100% of the synths and audio input signals are going through the effect you have inserted. As a result, there is a WET/ DRY control enabled in INSERT mode that lets you adjust the overall amount of the effect. To hear more of the effect, move the control towards the WET side.

SEND EFFECT MODE: In SEND mode, the audio is sent to the effect much like the Auxiliary send on an audio mixer. You can adjust the effect amount by changing the "send" level each channel (or slot). This way, you can adjust the amount of effect, if any, on a per channel basis.

Both the Effect 1 and Effect 2 slots have TAG and BANK buttons to select presets, just like on the synths and audio effects. You can browse the presets by selecting either TAGs or Banks and clicking on the drop down menu.

Main Mix Controls: At the bottom of the MIX section you'll find the MIX controls, which consist of the main audio output volume and pan controls, the main output meters, the CPU meter, the RAM meter, and the passive mix control.

The main audio output volume and pan control work just like they do on the channel slots. Click on the knob or pan button and move your mouse to change the volume or left/right pan settings, respectively.

NOTE: The software volume controls are completely independent of the front panel hardware volume control. For example, if the software volume controls are at maximum, but the hardware volume control is all the way down, you will not hear anything from the MuseBox outputs!

Passive Mix Mode: When you are using the front panel inputs on MuseBox, the rear panel inputs are not available for processing. However, if you have an external audio device, such as an MP3 Player, a keyboard with its own sounds, a drum machine, or some other audio device, it is possible mix together the rear panel input signals with the sounds being processed or generated inside the MuseBox by selecting the **PASSIVE MIX** function.

When PASSIVE MIX is selected, the audio connected to inputs C and D will be mixed with the signals being processed from the front panel inputs or with the sounds being generated with the synthesizers and sent through main outputs. Note that since these are "passive" inputs, there is no processing or level control provided when in this mode.



To adjust the relative mix between the MuseBox output and your passively mixed inputs, either 1) change the output level of your external device, or 2) adjust the output volume of the MuseBox to set the relative level between the two. Remember: when passive mix is engaged, you have no control over the levels of the C & D inputs!

NOTE: Please use caution when connecting an external device to the MuseBox when it is in Passive Mode. The only control you will have over the level coming out of the MuseBox is by changing the output level of the device you have attached.

WARNING: The Passive Mix function is ONLY for line level input devices. NEVER connect an amplifier output to ANY of the MuseBox inputs or permanent damage can result. Such damage is NOT covered under warranty.

Exploring the GUI: The Setup Menu Tab

Your MuseBox has several system level settings. These are all found in the SETUP tab on the Graphical User Interface.

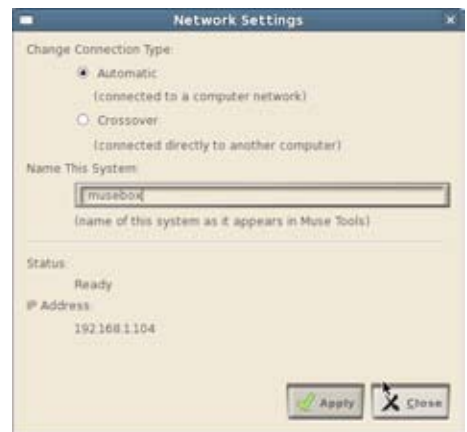
Setup: Network Settings

There are two network settings in MuseBox: Automatic or Crossover.

The Network Settings window allows you to determine what mode the networking will be configured. In Automatic mode, it is assumed that your MuseBox is connected to a computer network that has a device like a cable or DSL modem on it for connection to the internet. This mode would allow you to use the Muse Tools software to view the GUI, or update the software on your MuseBox.

In Crossover mode, the assumption is that the MuseBox will be connected directly to another computer using a single "crossover" cable, and NOT connected to a network device like a router or switch. In this mode, the assumption is that you will be using the computer primarily to view the GUI using the MuseBox Tools program.

Also handy is the Network Status screen that tells you whether your network is properly configured.



MuseBox uses standard network cables, available at your local computer store.

Setup: Software Updates

MuseBox is powered by software, and as such, one of the most powerful aspects of it is the fact that you are able to receive software updates to improve the functionality of your MuseBox.

To update the software, you must first have a "live" Internet connection available, and you must also connect a mouse, monitor and keyboard to your MuseBox. Once these connections have been made, simply select Software Update from the SETUP menu, and the MuseBox will automatically check for, download and install any relevant software updates for the system.

IMPORTANT NOTE: We highly recommend that you check for software updates immediately after purchase of your MuseBox, and then once every 3 to 6 months to keep your MuseBox up to date!

Setup: Audio "Latency" Settings

MuseBox makes use of computer software, and has a very high-performance audio sub-system that converts the digital information in the software into audio you can hear, all in realtime. In order to handle the calculations necessary to turn digital "bits" into music, the computer inside your MuseBox needs a very small amount of time, or a "buffer" to do its work. This setting is called your latency setting, and it will affect how many plugins you can run at once as well as how "fast" or "tight" your MuseBox feels.

With MuseBox, certain virtual instruments and effects can make it so that MuseBox is not able to finish all the calculations you are asking it to do, then an audible "click" might be heard on the outputs since the system didn't have enough time to finish its work before it had to submit them to the outputs. It can cause the audio to click or pop, and is generally unpleasant. The key is to find the right "buffer size" or "system latency" for your system to allow everything to work smoothly and efficiently.

MuseBox gives you the choice of several different "System Latency" settings.

Lowest: This is the fastest setting in the MuseBox, and is best for drums or when you are singing. This is also the most demanding setting in terms of the processor load, so some presets may not be able to run well at this setting. If you hear clicking or popping in the audio output while playing at this setting, try selecting the next higher setting.

Normal: This is the standard setting in the MuseBox. Fast, but not so fast that you are likely to overload on a regular basis. If you hear clicking or popping in the audio output while playing at this setting, try selecting the next higher setting.

Medium: Slower than normal, this setting is typical of most computer systems. Sounds that have fast attacks may feel a bit a little slow in their response at this setting but should be fine for sounds that are more legato, like strings and pad synths. If you hear clicking or popping in the audio output while playing at this setting, try selecting the next higher setting.

Highest: If Medium does not give your MuseBox enough time to get its work done, then try the highest setting. This setting gives the processor the most amount of time to do its job, and should be sufficient for every sound found in MuseBox.

The best way to set the latency is to use the NORMAL setting in normal playing, and if you hear any clicks in the audio (not related to the volume level) then change to the next higher latency setting.

System Specifications

Dimensions: 8.375" wide (1/2 rack space), 3.0" high (not including feet), 10.5" deep, not including knobs. MuseBox is designed for table-top and rackmount use.

Weight: MuseBox weighs 5 lbs., 12 oz. (2.55 kg) The power supply and cable are 1 lb., 2 oz. (0.51 kg). Together they weigh 6 lbs. 12 oz. (3.06kg).

Power Requirements: 12VDC input, 5A Max, center pin positive, using approved AC to DC converter. The AC to DC converter accepts inputs from 100 to 240VAC, 50/60Hz 1.5A Max The power adapter supplied with the unit is both auto-ranging and auto-power factor correcting for use anywhere in the world.

Inputs and outputs:

Front panel:

Two combination XLR/ 1/4" inputs with high-Z instrument input on 1/4" inputs, and low-Z Microphone input on XLR-type jacks, Pin 2 positive, with 48V phantom power selectable via push-button switch.

One 1/4" TRS (Tip / Ring / Sleeve) headphone jack.

Rear Panel:

Two 1/4" line level outputs, low impedance.

Two 1/4" line level balanced inputs, high impedance.

One full-size 5-pin DIN MIDI INPUT jack.

One 1/4" TRS Footswitch Input jack. Grounding the Tip or Sleeve will invoke assigned function. Default function assignment is Tip=Patch Increment, Ring= Patch Decrement)

Four USB 2.0 Jacks for connection to a mouse, keyboard, or device-compliant MIDI USB devices.

One Gigabit Ethernet Jack for connection to a Computer or network (networking cables not supplied).

One 15-pin VGA monitor connector for connecting a computer monitor.

One Coaxial bi-pin 12VDC power input jack. (Center pin positive).

One CF Card slot for connecting Compact Flash memory cards to add additional virtual instruments or effects.

Special Front Panel Key Combinations & Shortcuts

Pressing the power button **once** will cause the unit to go in to "standby" mode, keeping all sounds and effects loaded, but unit not drawing as much power. The power button will "wink" when it is in standby mode. Press power button once to restore normal operation.

Pressing the power button **twice** will cause the unit to shut down completely. **IMPORTANT: ALWAYS SHUT THE MUSEBOX DOWN BY PRESSING THE POWER BUTTON TWICE TO ENSURE NORMAL OPERATION.**

Pressing the power button **three times** will reset the unit and reload the current sounds or effects.

Holding down 'PLAY' at startup will rescan Banks and Patches, rebuild the plugin list, and start the mixer in a default setting with no sounds or effects loaded.

Holding down PLAY + MIX will generate MIDI panic in the event that your keyboard or MIDI device did not send a Note Off message.

Holding both the SNTH1 and SNTH 2 buttons will create a split between SNTH 1 and SNTH2 at middle C.

END-USER SOFTWARE LICENSE AGREEMENT

By opening the seal of this product and operating it, you are agreeing to the following end-user licensing agreements for the software that runs on MuseBox. If you do not agree to the terms set forth herewith, return the unit to your retailer in the same condition as it was purchased for a full refund.

DEFINITIONS: This license is between you, the end-user ("you"), Muse R&D ("Muse") and the third party software developers ("Developers") whose software is included for use with this product. This license agreement covers all software used in and with the MuseBox product, made available for download, or provided on physical data storage media for use with the MuseBox product. The term "software" in this agreement includes all source code, application software, drivers, virtual instruments or effects, content, presets, and tools used or associated with the MuseBox product.

OWNERSHIP: The software and any authorized copies of the software used in MuseBox, in any form, is intellectual property of Muse or the Developer who created the software. You acknowledge that the software in MuseBox is licensed (not sold) to you on a non-exclusive basis for use with the MuseBox hardware. You may use and benefit from the functionality and intellectual property expressed in the software, but you are not allowed to unbundle, resell or distribute the software for any purpose whatsoever. The copyrights, trademarks, and intellectual property of all software contained or associated with the Musebox remains the property of Muse or its suppliers at all times, including when or if MuseBox is sold or transferred to another user.

THIS SOFTWARE IS PROTECTED BY LAW, INCLUDING BUT NOT LIMITED TO INTERNATIONAL COPYRIGHT AND INTELLECTUAL PROPERTY TREATIES. YOU ARE SPECIFICALLY FORBIDDEN FROM UNBUNDLING, REVERSE ENGINEERING, MODIFYING, HACKING, DE-COMPILING, RE-PURPOSING OR RE-DISTRIBUTING THE SOFTWARE INCLUDED IN MUSEBOX FOR ANY REASON. FURTHERMORE, THE RESAMPLING OF THE CONTENT OF ANY OF THE SOUNDS OR PRESETS IN MUSEBOX TO CREATE COMMERCIAL SOUND LIBRARIES FOR SALE IS STRICTLY FORBIDDEN AND VIOLATES THE COPYRIGHTS OF THE SOFTWARE AND SOUND DEVELOPERS.

ACCEPTABLE USE: The software in this product, including but not limited to the host software, software tools, the virtual instruments and effects as well as the sampled sound content and presets used in MuseBox are licensed to you for music composition, recording, and/or performance, including using the sounds created by or processed with the software on recordings, live performance or in broadcast without restriction. Some software that can be installed on MuseBox may have different restrictions on use and those specific terms of use are not superseded by the terms of this agreement.

WARRANTY: Muse and/or the Developers of the licensed software included with MuseBox warrant the product will perform substantially in accordance with the accompanying MuseBox documentation for the first 90 days after purchase. Beyond the operation of the software as documented, you agree that Peavey, Muse and the Developers have made no express warranties to you regarding the software provided herein, and acknowledge that the software is provided "AS-IS" without warranty. Furthermore, you agree that no claims of the fitness of this software for any particular purpose, merchantability, satisfactory quality, or non-infringement of third party rights have been made by Peavey, Muse, or the Developers. Some States do not allow the exclusion of implied warranties, so this exclusion or limitation may not apply to you. .

DISCLAIMER OF LIABILITY: In no event will Peavey, Muse or the Developers be liable to you for any loss of use, interruption of business, or any direct, indirect, special, incidental or consequential damages of any kind (including loss of data, income, or profits) associated with the use of this product, regardless of the form of action including contract, tort (including negligence), strict product liability, or otherwise, even in the event that Peavey, Muse, and/or the Developers have been advised of the possibility of such damages. Some States do not allow exclusions or limitations of liability rights, so the above limitation or exclusion may not apply to you.

INTERNET CONNECTIVITY: The software in this product may connect to the Internet for the purposes of software registration, updates, or enhancement. Whenever the product connects to the Internet, the IP address associated with your MuseBox will be made available to Muse and/or its suppliers. All information obtained in this manner is treated confidential, and all customer information associated with the registration, updating, or use of MuseBox or the online services associated with the device are managed in accordance with the company's privacy policies which can be found on the website www.museresearch.com.

COPYRIGHT / TRADEMARK NOTICE: The software contained in and associated with MuseBox is Copyright 2001-2011, All Rights Reserved, by Muse Research and Development Inc., Peavey Electronics, Inc., Ultimate Sound Bank, Inc., WaveArts, Inc., MuVoice, Inc., Camel Audio, Inc., ForeFront, Inc., and any or all other third party developers whose software is included with this device. The Muse logo, MuseBox, and MusePlayer are trademarks of Muse Research and Development, Inc. Peavey, the Peavey Logo, and ReValver, are trademark of Peavey Electronics, Inc. All other Copyrights and Trademarks are property of their respective owners.

Acknowledgements

MuseBox was created by a dedicated group of individuals at both Muse Research and Peavey Electronics. Special thanks go to the following individuals for turning this concept into a reality:

Executive Producers: Hartley Peavey, Matt Christiano, Chris Halaby, Courtland Gray.

Hardware & Firmware Engineering: Dan Freeman, Chuck Geber, John Fera, Mihai Ionescu, Bryan Lanser, David McRell. Special thanks to Chuck and Dan for all their help on weekends!

Software Engineering and System Design: Michael Ost and Louis Gorenfeld.

Product Concept and GUI Design: Michael Ost, Bryan Lanser, Axel Hartmann (DesignBox).

Industrial Design / Mechanical Engineering / Manufacturing Engineering: Paul Kitterman, Jimmy Horton, Tim Tardo, Jay Shangraw.

Software Testing: Kevin Bryson, Gary Grove, Rick Escobar, Kevin Looney, Conrad Sasinski.

Sound Design and Preset Creation: Kevin Bryson, Chris Martirano, Tom Allen, Louis Gorenfeld. Special thanks to Mario DeCuitius at Alternate Mode for the great pitched percussion samples.

Project Wranglers: Bryan Lanser and Fred Poole.

Product Marketing: Scott Mire, Andy Rust, and Laura Whitmore.

Manual: Bryan Lanser, Scott Mire, Bill Harper, Matt Christiano.

Virtual Instrument and Effects partners: Alain Etchart and Emanuel Usai (Universons) Ben Gillette (Camel Audio), Bill Gardner (WaveArts), Wim D'Haes (Mu Tech), Marc-Pierre Verge (Applied Acoustics Systems), Michael Lundgren (Peavey), Urs Heckmen (U-He), George Yohng (ForeFront) Peter Linsener (LinPlug).

Good Advice Along The Way: Scott Garcia, Korel Tunador, Marshall Otwell, Peter Muller, and Egor Simpson.

Demo Video Special Guest Stars: Timothy Drury, Tom Allen, Tom Savell.

Magical Sample Editing Tools provided by Jeremy Todd of Izotope, Inc.

Features and specifications subject to change without notice.



PEAVEY ELECTRONICS CORPORATION LIMITED WARRANTY

Effective Date: 09/15/2010

What This Warranty Covers

Your Peavey Warranty covers defects in material and workmanship in Peavey products purchased and serviced in the U.S.A. and Canada.

What This Warranty Does Not Cover

The Warranty does not cover: (1) damage caused by accident, misuse, abuse, improper installation or operation, rental, product modification or neglect; (2) damage occurring during shipment; (3) damage caused by repair or service performed by persons not authorized by Peavey; (4) products on which the serial number has been altered, defaced or removed; (5) products not purchased from an Authorized Peavey Dealer.

Who This Warranty Protects

This Warranty protects only the original purchaser of the product.

How Long This Warranty Lasts

The Warranty begins on the date of purchase by the original retail purchaser. The duration of the Warranty is as follows:

Product Category	Duration
Guitars/Basses, Amplifiers, Preamplifiers, Mixers, Electronic Crossovers and Equalizers	2 years *(+ 3 years)
Drums	2 years *(+ 1 year)
Enclosures	3 years *(+ 2 years)
Digital Effect Devices and Keyboards and MIDI Controllers	1 years *(+ 1 year)
Microphones	2 years
Speaker Components (incl. Speakers, Baskets, Drivers, Diaphragm Replacement Kits and Passive Crossovers)	1 year
Tubes and Meters	90 Days
Cables	Limited Lifetime
AmpKit Link, Xport, Rockmaster Series, Strum'n Fun, RetroFire, GT & BT Series Amps	1 year

[Denotes additional Warranty period applicable if optional Warranty Registration Card is completed and returned to Peavey by original retail purchaser within 90 days of purchase.]*

What Peavey Will Do

We will repair or replace (at Peavey's discretion) products covered by Warranty at no charge for labor or materials. If the product or component must be shipped to Peavey for Warranty service, the consumer must pay initial shipping charges. If the repairs are covered by Warranty, Peavey will pay the return shipping charges.

How To Get Warranty Service

(1) Take the defective item and your sales receipt or other proof of date of purchase to your Authorized Peavey Dealer or Authorized Peavey Service Center.

OR

(2) Ship the defective item, prepaid, to Peavey Electronics Corporation, International Service Center, 412 Highway 11 & 80 East, Meridian, MS 39301. Include a detailed description of the problem, together with a copy of your sales receipt or other proof of date of purchase as evidence of Warranty coverage. Also provide a complete return address.

Limitation of Implied Warranties

ANY IMPLIED WARRANTIES, INCLUDING WARRANTIES OF MERCHANTABILITY AND FITNESS FOR A PARTICULAR PURPOSE, ARE LIMITED IN DURATION TO THE LENGTH OF THIS WARRANTY.

Some states do not allow limitations on how long an implied Warranty lasts, so the above limitation may not apply to you.

Exclusions of Damages

PEAVEY'S LIABILITY FOR ANY DEFECTIVE PRODUCT IS LIMITED TO THE REPAIR OR REPLACEMENT OF THE PRODUCT, AT PEAVEY'S OPTION. IF WE ELECT TO REPLACE THE PRODUCT, THE REPLACEMENT MAY BE A RECONDITIONED UNIT. PEAVEY SHALL NOT BE LIABLE FOR DAMAGES BASED ON INCONVENIENCE, LOSS OF USE, LOST PROFITS, LOST SAVINGS, DAMAGE TO ANY OTHER EQUIPMENT OR OTHER ITEMS AT THE SITE OF USE, OR ANY OTHER DAMAGES WHETHER INCIDENTAL, CONSEQUENTIAL OR OTHERWISE, EVEN IF PEAVEY HAS BEEN ADVISED OF THE POSSIBILITY OF SUCH DAMAGES.

Some states do not allow the exclusion or limitation of incidental or consequential damages, so the above limitation may not apply to you.

This Warranty gives you specific legal rights, and you may also have other rights which vary from state to state.

If you have any questions about this Warranty or services received or if you need assistance in locating an Authorized Service Center, please contact the Peavey International Service Center at (601) 483-5365.

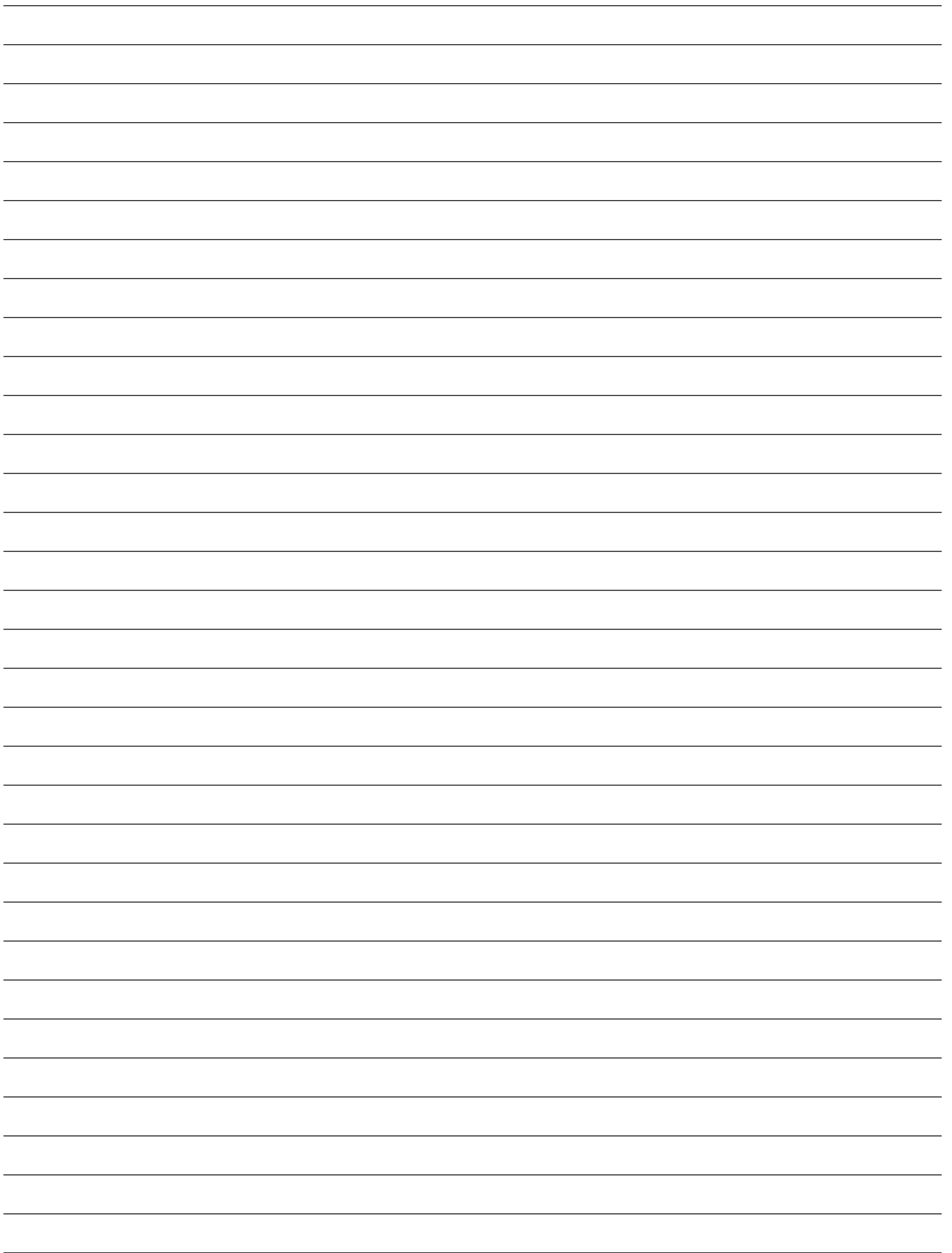
Features and specifications are subject to change without notice.



Logo referenced in Directive 2002/96/EC Annex IV (OJ(L)37/38, 13.02.03 and defined in EN 50419: 2005
The bar is the symbol for marking of new waste and is applied only to equipment manufactured after 13 August 2005







Optional Product Extended Warranty Registration

Give us some information and put your extended warranty into effect!

Please take a few minutes to fill out this information/survey sheet to help us get to know and serve you better.
To save time, submit your warranty registration online at www.peavey.com/support/warrantyregistration

1.

First Name _____ Initial _____ Last Name _____

Street Address _____

City _____ State/Province _____ Postal Code _____

() _____

Telephone Number _____ E-mail Address _____

() _____ - _____ - _____

Fax Number _____ Date of Birth _____

Gender M F

2.

Model _____ 8-Digit Serial Number _____

Date of Purchase _____ Price Paid _____

3.

Name of store where purchased _____

City _____ State _____

4. Top two (2) reasons why you purchased from this store/dealer:

- Availability of product
- Friend/Relative's recommendation
- Store credit card
- Knowledgeable staff
- Availability of lessons
- Technical instruction
- Past favorable experience
- Best price
- Advertised special
- Convenient location
- Received as a gift
- Other _____

5. Where do you most often shop for music and sound products?

- Independent retailer
- Mass market retailer
- Mail order magazines
- Newspaper ads
- Internet/Web sites
- Other _____

6. What two (2) factors most influenced your purchase of this product?

- Peavey brand name
- Craftsmanship
- Features for price
- Bundled accessories
- Sound quality
- Product appearance
- Durability
- Prior experience with Peavey
- Packaging
- Other _____

7. How did you learn about this Peavey product? (select best answer)

- Magazine review
- Newspaper review
- Radio advertisement
- Advertised special
- Friend/Relative's recommendation
- Salesperson's recommendation
- Teacher's recommendation
- Catalog or flyer
- Saw in store
- Use by professional
- Other _____

8. Which other brands/models did you consider?

9. How would you describe your level of musicianship/technical expertise?

- Beginner - Never played or taken less than one (1) year of lessons
- Intermediate - One (1) to five (5) years of lessons or playing
- Advanced - More than five (5) years of lessons or playing; play professionally

10. Education: (select best answer)

- High school
- Some college
- Completed college
- Graduate school

11. Which best describe your family income? (select best answer)

- Under \$15,000
- \$15,000 - \$24,999
- \$25,000 - \$34,999
- \$35,000 - \$49,999
- \$50,000 - \$74,999
- \$75,000 - \$99,999
- \$100,000 - \$149,999
- Over - \$150,000

12. Which of the following is your primary source of information on musical products: (select best answer)

- Television
- Radio
- Internet
- Newspaper
- Magazines
- Mail order catalogs
- Direct mail
- Literature from manufacturer
- Other _____

13. What is your main motivation for buying new equipment?

- Replacing old product
- Want new and leading edge equipment
- Fullfill a specific need
- Supplement existing products
- Value
- Impulse
- Need for improved performance
- New technology
- Availability of product
- Other _____

14. Please list your three most frequently visited Web sites.

1. <http://> _____
2. <http://> _____
3. <http://> _____

15. In your opinion, what could Peavey do to improve its products and/or service? Please use the space below to tell us your answer.

Thank you for taking the time to fill out our survey! Don't forget to fold and tape (with Peavey address facing out), affix postage stamp and drop in the mail!



Logo referenced in Directive 2002/96/EC Annex IV (OJL37/38,13.02.03 and defined in EN 50419: 2005)
The bar is the symbol for marking of new waste and is applied only to equipment manufactured after 13 August 2005



FROM:

Place
Postage
Here



Peavey Electronics Corporation
Attn: Warranty Department
P.O. Box 5108
Meridian, Ms 39302-5108